

mission

To extend knowledge, stimulate learning, and promote understanding, for the benefit of the community.

VISION

Murdoch will be a prominent and influential research-intensive University in the local, national and global communities. It will be renowned for its teaching quality, research excellence and innovation, and promotion of social and scientific critique. Murdoch University will embrace cultural diversity and ensure an international perspective in its activities, incorporating principles of sustainability, social justice and global responsibility.

Murdoch University is a multi-campus institution. By engaging with communities in the sphere of influence of our campuses, Murdoch will be a significant contributor to cultural and community life and development in the region.

Through excellence and accessibility in the learning environment, student care and service provision, Murdoch, in partnership with the Guild of Students, will engender a vibrant and positive on-campus life. The University will also foster an expanding, active community of alumni.

Murdoch University will have increased financial reserves and more diverse sources of income as a result of an entrepreneurial outlook combined with prudent management that will ensure long-term independence.

contents

VICE CHANCELLOR'S REPORT	4
HIGHLIGHTS	7
Kulbardi paves way to university	8
The worm burner sparks collaboration	8
Earth turned for groundbreaking new era for Law	8
MoU sets path for expansion in Mandurah	9
American accreditation a stamp of excellence for Veterinary School	9
International Waste Conference attracts world's best	10
RBDO strengthens links with Murdoch through MOU	10
Physicist dream becomes more real for Daniel	10
New centre will focus fight against deadly plant disease	11
Murdoch tops WA's share of Commonwealth funding	11
Numbers are up for Powell	11
Murdoch Uni to help meet nursing shortfall in Peel region	12
AFI nominations	12
Murdoch hosts "can do" expo	12
Rockingham tribute made to one of Murdoch's founding lecturers	13
Vet students go wild	13

REPORT ON OPERATIONS	14	CERTIFICATION OF PERFORMANCE INDICATORS	55
RESEARCH	15	CERTIFICATE OF COMPLIANCE	56
RISK MANAGEMENT	18	STATEMENT OF EXPENDITURE	57
COMPLIANCE WITH STATE RECORDS ACT	18	FINANCIAL STATEMENTS	58
EDUCATION	19	CERTIFICATION OF FINANCIAL STATEMENTS	60
REGIONAL ENGAGEMENT	20	AUDITOR GENERAL LETTER	61
INTERNATIONAL OUTLOOK	21	STATEMENT OF FINANCIAL PERFORMANCE	62
HUMAN RESOURCES	22	STATEMENT OF FINANCIAL POSITION	63
EQUITY	22	STATEMENT OF CASH FLOWS	64
CHARACTERISTICS OF THE STUDENT POPULATION	27	NOTES TO THE FINANCIAL REPORTS	65
Summary Statistics	29		
Equity Student Statistics	34		
Report of Operations Commonwealth Operating Grant and Load	37		
FUNCTIONAL CHART	38		
ORGANISATIONAL CHART	39		
OFFICERS OF THE UNIVERSITY	40		
SENATE	40		
AUDITOR GENERAL LETTER	42		
KEY PERFORMANCE INDICATORS	43		
Introduction	43		
Summary of Indicators	43		
Teaching Quality and Graduate Outcomes	44		
Research and Quality Outcomes	49		

vice chancellor's report



During 2003 Murdoch University moved confidently to consolidate its position as one of Australia's premier research-intensive institutions. The statement of a clear strategic direction and innovative approaches to quality improvement and diversification of financial resources underpinned strong teaching and research performance.

Murdoch University's Senate approved the Murdoch University Strategic Plan 2003-2007 that clearly defines for all stakeholders the direction in which we are headed as an institution and provides a shared map to achieve future goals. The Plan focuses on four key goals in the areas of Education, Research, Regional Engagement and Management. Concepts and ideas embedded throughout the Strategic Plan ensure that each broad goal is sufficiently linked to the higher levels to allow a process of review of detailed goals and targets within a consistent overlying structure.

In defining a clear strategic direction, the University has committed to steering its own course - independent of the policy direction of the Government of the day but optimising opportunities within prevailing resource frameworks. Within this context Murdoch will engage with the Federal Government's Higher Education reforms by moulding them to the University's direction.

A defining theme of the University's new Strategic Plan is Sustainability, through which the University aims to meet the needs of current and future generations through the integration of environmental protection, social advancement and economic prosperity. This broad view of sustainability is at the heart of our planning for each of our campuses, for example. Development of an overall environmental policy that encompasses diverse areas such as biodiversity, building design and water management is a primary component of development of a new Master Plan for the South Street campus. Wide consultation with relevant groups will see transport, land planning and community requirements considered in an integrated and truly sustainable way.

Research collaboration was a major focus for Murdoch in 2003. In Round 2 of the ARC Linkage Project Grants Murdoch was awarded grants valued at \$2.733 million over five years. This saw us ranked sixth out of 38 universities nationally. Linkage Projects require the development of strategic research alliances with industry through projects aimed at the application of advanced knowledge to problems or providing opportunities to obtain national economic or social benefits. The broad success of Murdoch's approach to developing links with industry was reflected in the range of successful areas across the University.

Opportunities for research collaboration and the development of consortia in common thematic areas have been provided through the formation of the Innovative Research Universities Australia (IRU Australia) grouping. The group comprises Flinders, Griffith, La Trobe, Macquarie, Murdoch and Newcastle Universities and has the ability to create a critical mass in some key research areas that will allow it to compete with increasing success when applying for multi-state initiatives. There has been significant sharing of data across the group and considerable work on benchmarking, in particular

a comparison of systems for quality management and audit processes. IRU Australia was readily recognised in higher education commentary and its views sought on issues concerning the sector. It was active in analysis and discussion of the Higher Education Review and provides an important forum through which Murdoch can make its voice heard on the national stage.

Innovation and collaboration are the hallmarks of a joint venture between Murdoch and Westscheme Pty Ltd, the largest private sector superannuation fund in Western Australian. The focus of the Murdoch Westscheme Enterprise Partnership (MWEP) is investment in the commercialisation of discoveries generated from the research activities conducted at the University. Through the partnership Westscheme have committed a stream of financial capital and Murdoch a stream of intellectual capital to invest in early stage research initiatives with strong commercialisation prospects. This exciting initiative is the first of its kind in Australia and provides access to a significant financial pool for the development of Murdoch's intellectual property.

Academically, Murdoch has maintained its superb reputation for teaching excellence and student satisfaction. The Good Universities Guide, an independent national publication, awarded Murdoch a five-star rank for student satisfaction for the seventh time in eight years, the only university in Australia to achieve this standard. This ranking is derived from independent surveys of recently graduated students and therefore represents a vote of confidence from our students.

During 2002 prospective students were urged to "Choose Murdoch First" and they did so in greater numbers than ever before. Murdoch's first preferences increased by 18.5 per cent over the previous year and its share of first preferences rose from 15.3 per cent in 2002 to 16.4 per cent this year. This increase reflects the very positive view of Murdoch's learning and teaching performance among prospective students and the focussed efforts of both the Prospective Students' Office and large numbers of dedicated academic and general staff from the Divisions.

An important measure of the quality of a University's academic programs is external accreditation and 2003 saw a significant landmark reached by the School of Veterinary and Biomedical Science. The Murdoch Veterinary course achieved direct accreditation by the American Veterinary Medical Association (AVMA), the only University in Australia and one of only six institutions outside North America to have this international imprimatur. In their assessment the AVMA complimented the Veterinary degree's innovative curriculum, the world-class facilities and the campus farm.

Within the Strategic Plan Murdoch has included as a goal engagement with communities in the South West regions encompassing Rockingham-Kwinana and Peel. A key focus has been on ensuring that the broad course profile relates directly to community needs. At Rockingham, this led to the introduction of Primary Education to meet a key need identified for the region. The program was significantly oversubscribed and we saw a two-point increase in the minimum TER cut off entry score at Rockingham. The City of Rockingham have recognised the effect of improved educational opportunities for young people on the social and economic destiny of the City and Murdoch's commitment to the region. This resulted in the City funding of a Professor of Education, in what is believed to be the first such partnership between a local government and a tertiary institution in Western Australia.

Murdoch's move into Peel has been strongly supported by Government at all levels. The Commonwealth Government provided a further \$2.0 million for the establishment of Murdoch's Peel Campus, in addition to the \$2.5 million allocation in 2002. The University signed a Memorandum of Understanding with the City of Mandurah to facilitate cooperative activities at the Peel Education Campus. In a tangible demonstration of the commitment of the City, they have made available an interest free loan of \$1 million that will allow work to begin on our facilities in 2004. Murdoch was also successful in receiving an initial 25 Nursing places to support the Peel region from 2004.

In the South West corridor it is acknowledged that Murdoch is on a growth path and will be the main Higher Education provider in the region.

The Commonwealth Government negotiated the passage of the Higher Education Support Bill 2003 in December. The reforms were aimed at establishing a transparent and consistent policy framework that would allow individual universities to pursue their own strategic mission, capitalise on their strengths and engage regional communities. The core principles of the reforms - Sustainability, Quality, Equity and Diversity - align to the values and themes of Murdoch's Strategic Plan.

Murdoch participated actively in the discussion of the Higher Education Reforms with the key focus being the allocation of additional Commonwealth funded places to WA and appropriate indexation of Commonwealth Grants. To ensure equity and remove the disadvantage currently experienced by Western Australia's students, the state's Universities argued for an increase in the Commonwealth allocation of HECS based places to WA. Within that framework, we have actively lobbied for the majority of any new places to come to Murdoch.

A key goal for the University is effective leadership that, through innovative, ethical and efficient governance and business practices, facilitates the achievement of the focussed goals in the Strategic Plan. The appointment of a strong senior executive team has been an important aspect of development of the University's leadership. Professor Jan Thomas commenced as Pro Vice Chancellor (Academic) in February and she has provided stewardship that has encouraged continued innovation in and development of academic offerings across the University. Her experience takes in both local and international activity in educational development, teaching support and curriculum development that covers both practical and theoretical aspects.

Professor Andris Stelbovics was appointed Pro Vice Chancellor (Research) in November, having acted in the position with considerable distinction since February. He is internationally renowned for his expertise in fundamental physics and has a strong research record at Murdoch, ranking among its most prolific and successful academics.

Professor Gary Martin was appointed Executive Dean of the Division of Arts in February. He has an outstanding reputation for his teaching and research in adult education, with his activities focused on leadership development, competency development, and action research. In 2002, Professor Martin was appointed Executive Dean of the Division of Social Sciences, Education and Humanities (SSHE) and in 2003 coordinated the administrative consolidation of SSHE and the Division of Business, Information Technology and Law to form the Division of Arts.

The Deputy Vice Chancellor, Professor Jeff Gawthorne, retired at the end of 2003 after 28 years academic and administrative service. He worked at Murdoch with four Vice Chancellors and on his retirement was the longest serving Deputy Vice Chancellor in Australia. The Deputy Vice Chancellor's role focused on operational management of the University, with responsibility for co-ordination of strategic planning, the University budget, staffing policy and enterprise bargaining. Professor Gawthorne was awarded the title of Emeritus Professor in recognition of his outstanding service to Murdoch.

Murdoch remains committed to the student experience and our staff continue to provide leadership nationally in aspects of teaching and learning. The University also maintains high performance on the research front - ranking among the top twelve research universities on a per capita basis. Murdoch has a strong future as an independent institution, well positioned to move forward and prosper under the new Federal Government funding regime.



John Yovich
Vice Chancellor



2003

highlights



highlights

2003

KULBARDI PAVES WAY TO UNIVERSITY

The Kulbardi Centre expanded on the success of the Koora Kudidj (Learn Before) Indigenous Pre-Law Programme to introduce new courses in media and sustainability. Collaborating with the School of Media, Communication and Culture (MCC) and the Institute for Sustainability and Technology Policy (ISTP), the inaugural Kulbardi Wangkiny (Magpie Talking) Indigenous Pre-Media Program and the Wangkiny Boodjah (Talking Country) Indigenous Pre-Sustainability Program were created. Now in its fourth year, Koora Kudidj has seen more than 40 Indigenous individuals participate in the intense four-week program with more than 24 students being recommended to study in the School of Law.

THE WORM BURNER SPARKS COLLABORATION

Murdoch University embarked on a 12-month project with St John of God (Murdoch) to process the hospital's organic waste using an industrial worm burner. As well as reducing the waste volume, this process aimed to produce benefits such as fertiliser for the hospital gardens as well as providing students with practical research opportunities with a very sustainable technology.



CEO St John of God Health Care Murdoch, Peter Mott; Murdoch Vice Chancellor Professor John Yovich; worm enthusiast Peter Cole and Dr Martin Anda came to grips with worm power.

EARTH TURNED FOR GROUNDBREAKING NEW ERA FOR LAW

The Chief Justice of Western Australia, the Hon David Malcolm, swapped his wig and gavel for a shovel in March when he turned the first sod to celebrate the commencement of the building of Murdoch's new Law School. The new \$3.7 million School of Law building has been supported by a fundraising campaign involving the legal profession, School of Law alumni, and industry, including most of the major Perth law firms. The new building is expected to be completed by first semester 2004.



(l-r) Chief Justice of Western Australia, the Hon David Malcolm; Vice Chancellor Professor John Yovich and Dean of Law, Professor Ralph Simmonds were delighted to help turn the first sod of earth for the new Law building.

MOU SETS PATH FOR EXPANSION IN MANDURAH

A unique education campus in Mandurah looks set for expansion following the signing of a Memorandum of Understanding (MoU) between the City of Mandurah and Murdoch University by Murdoch Vice Chancellor Professor John Yovich and Education Minister Alan Carpenter. The signatories will collaborate on establishing a new multi-million-dollar university learning centre by 2005, which will be part of the Peel Education and TAFE Campus.

AMERICAN ACCREDITATION A STAMP OF EXCELLENCE FOR VETERINARY SCHOOL

The world class facilities and education at Murdoch University's Veterinary School were recognised through accreditation by the American Veterinary Medical Association (AVMA). Murdoch University is the first Australian veterinary school to achieve this accreditation, which will enable students to have their degrees automatically accepted in the United States and Canada. With their veterinary qualifications from Murdoch University, graduates can now work throughout North America, as well as in Australia, New Zealand, the United Kingdom and Malaysia.



Pro Vice Chancellor (Academic), Professor Jan Thomas, 5th year student Juanita Morisson, Dr Clive Eger, 5th year student Emma Vidler and Dean of the Veterinary School Professor John Bolton help Chelsea with her physiotherapy in Murdoch's Intensive Care Unit.

INTERNATIONAL WASTE CONFERENCE ATTRACTS WORLD'S BEST

Innovative ways of preventing organic waste being deposited in landfill were drawn together at a major international conference hosted by Murdoch University in May. The Conference, ORBIT 2003, is one of a series under the auspices of the International Association for Organic Recovery and Biological Treatment. This was the first conference in the series to be held outside Europe, and was sponsored by two State Government-supported Centres of Excellence at Murdoch University, the Centre for Organic Waste Management (COWM) and the Environmental Technology Centre (ETC).



Back (l-r): Professor Arthur McComb, Dr Pratap Pullammanapallil, Ms Lillias Bovell (Department of Environment, Water and Catchment Protection) Front (l-r): Professor John Yovich, the Hon. Peter Natrass, Professor Dr Ing Habil Werner Bidlingmaier (Chairman of ORBIT, from Weimar Bauhaus University, Germany).

RBDO STRENGTHENS LINKS WITH MURDOCH THROUGH MOU

Murdoch University and the Rockingham Business Development Organisation (RBDO) signalled their intention to work closer together and to aggressively pursue international technology and bio-enterprise opportunities by signing a Memorandum of Understanding (MOU) in March. This project builds on more than two years of close collaboration in this area, and the partners will find ways to attract technology and bio-enterprise initiatives to Western Australia and the Kwinana/Rockingham region, as well as promoting local technology and biotechnology products, services and capabilities overseas.



Chair of the Rockingham Business Development Organisation, Mr David Winter, and Vice Chancellor, Professor John Yovich, are committed to closer ties between the two organisations.

PHYSICIST DREAM BECOMES MORE REAL FOR DANIEL

Ten-year old Daniel Throssell was presented with the inaugural Murdoch University Vice Chancellor's Award for Academic Excellence by Murdoch's Vice Chancellor, Professor John Yovich, at Murdoch College in June. His academic potential was noticed during a Science Discovery Day at Murdoch College last year, resulting in assessment by an independent educational consultant. The award will cover Daniel's tuition fees for the duration of his study at Murdoch College to provide him with a unique opportunity to maximise his academic talent and personal potential.



Professor Jeff Gawthorne, Dr Judy Edwards MLA and Dr Giles Hardy at the Centre launch.



NEW CENTRE WILL FOCUS FIGHT AGAINST DEADLY PLANT DISEASE

»» The battle against a disease that could devastate up to a quarter of the plants found in South-Western WA has become a little easier with the launch of the Centre for Phytophthora Solutions, Science and Management at Murdoch University. This Centre represents WA's first cohesive research effort against the disease, involving collaborations with the Department of Conservation and Land Management, CSIRO, Alcoa and other research bodies locally and nationally.

MURDOCH TOPS WA'S SHARE OF COMMONWEALTH FUNDING

Murdoch University topped the nation for funding on a per capita basis for the Australian Research Centre Linkage Project grants, receiving 11 grants valued at \$2.733 million over five years. The Commonwealth Government will provide funding of \$47.5 million over the next five years through this program, which requires the development of strategic research alliances with industry through joint projects with the aim of applying advanced knowledge to problems or providing opportunities to obtain national economic or social benefits. Receiving 5.7 per cent of the total national funding, Murdoch University has a rosy future in research, and will continue to provide valuable solutions for Western Australia's mining, agricultural and biotechnology industries, and to make major contributions to preserving the State's environmental and cultural richness.



NUMBERS ARE UP FOR POWELL

»» Murdoch Senior Lecturer Beth Powell received one of five of the Inaugural Minister's Awards for Outstanding Contribution to Literacy and Numeracy for her creative methods to stimulate the learning of numeracy across the curriculum.

Award winner Beth Powell.

«« Opposite Page - Bottom - Clockwise from front: Daniel Throssell celebrated his scholarship win with Murdoch College Principal Allan Meney, parents Damien and Adrienne Throssell and Murdoch Vice Chancellor, Professor John Yovich.



MURDOCH UNI TO HELP MEET NURSING SHORTFALL IN PEEL REGION

» Murdoch University will join the battle to meet the shortfall of nurses in regional hospitals, offering 25 nursing places to support the Peel region from 2004. The program will aim to meet local community health care needs and there will be an emphasis on producing work ready nurses with an interest in employment in the region.

AFI NOMINATIONS

Teesh & Trude, a production made by Murdoch lecturer Melanie Rodriga and Melissa Hasluck of Cecile B. deux Mels films, received three AFI nominations. The film was nominated for Best Actor for Susie Porter, Best Juvenile Actor Mason Richardson, and Best Adaptation of a Script. *Teesh & Trude* was the first feature film in Australia to be fully shot in university studios.

MURDOCH HOSTS "CAN DO" EXPO

Removing imaginary barriers for people with disability in the workforce remains high on the University's agenda with Murdoch hosting a landmark Assistive Technology Expo in October. The expo aimed to raise awareness about assistive technologies and provide employers and community members with information about the role of technology in overcoming barriers facing people with disabilities in the workplace and in the classroom.

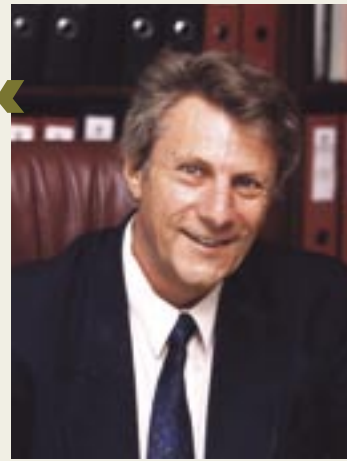
Ms Rhonda Marriott and Professor Jim Reynoldson can't wait to open the doors to nursing students next year.

highlights

2003

ROCKINGHAM TRIBUTE MADE TO ONE OF MURDOCH'S FOUNDING LECTURERS

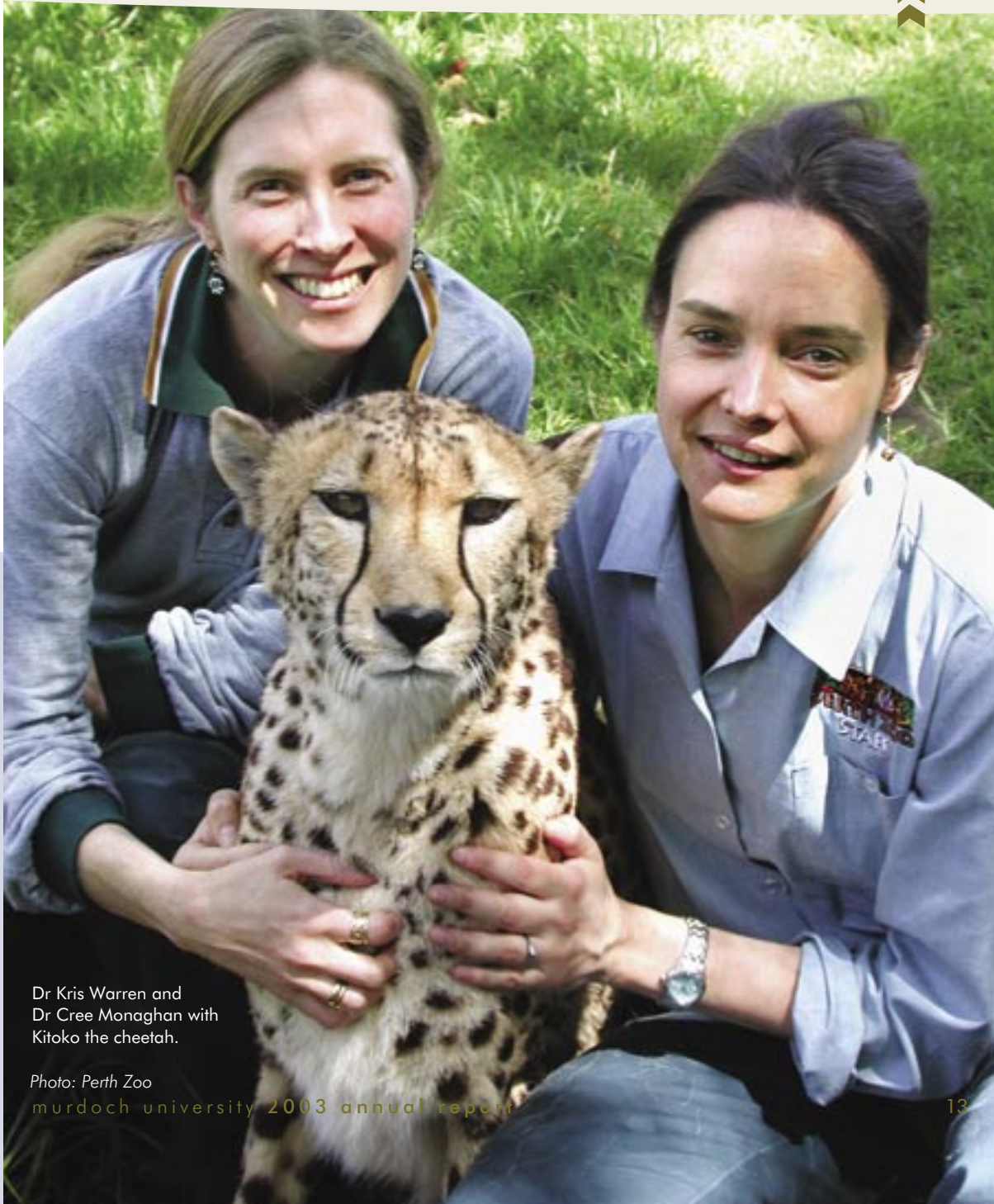
Murdoch University honoured Professor Roger Lethbridge, one of its foundation lecturers, by dedicating the Rockingham Campus Community Library foyer to his memory. This special event also launched the Murdoch University Library Endowment Fund, which gives people an opportunity to support the development of all Murdoch Universities libraries through tax deductible donations.



Professor Roger Lethbridge.

VET STUDENTS GO WILD

Murdoch veterinary students got in touch with their wilder sides on their clinical rotation placements at Perth Zoo this year, with just two weeks to learn as much as they could about zoo and wildlife medicine. Together, Murdoch University and Perth Zoo have developed a unique program to provide veterinary students with the basic skills for treating injured or sick wildlife during their careers in clinical practice. Fifth year veterinary students spend two weeks at a purpose built area at the zoo where they are taught about a range of subjects including animal welfare, physical and chemical restraint, common injuries and diseases of common wildlife species, conservation, nutrition and animal husbandry.



Dr Kris Warren and Dr Cree Monaghan with Kitoko the cheetah.

Photo: Perth Zoo



2003

report on
operations



research

In the competitive government research funding system, which links university research funding directly to research performance, Murdoch has maintained its strong position in 2003 as one of Australia's top performing research universities (See Table 2). Government funding for research is primarily allocated through two performance funding schemes: the Research Training Scheme (RTS) and the Institutional Grants Scheme (IGS). Together these two schemes embody the key operational and financial performance indicators for university research in Australia because they deliver research funding competitively across the entire higher education sector according to relative research success as measured by their ability to: generate external research grant and contract income; complete HDR students; publish; and attract students to enrol. In 2003 Murdoch ranked 12th nationally (normalised for size of the institution) in research performance as measured by the allocation of the RTS and IGS as a proportion of the Commonwealth operating grant.



Professor Andris Stelbovics
Pro Vice Chancellor (Research)

Murdoch has reached this strong research position through a process of continuous adaptation and improvement in research and research training. Murdoch's particular competitive advantages that will ensure it continues to extend and improve on this research and research training performance include: a high percentage of vigorous research active staff (90 per cent); a high proportion of staff at academic level A and above with PhDs (67 per cent); and a research effort that spans a comprehensive range of fields but with concentration in a select few.

In 2003, Murdoch maintained its six areas of research strength and added an additional area of emerging research strength (See Table 1). They provide the focal point for Murdoch's research and research training activities and incorporate researchers who are also prominent in most of the research centres in the University. Together they are responsible for attracting 80 per cent of the University's reportable research income.

These Areas of Research Strength provide substantial interdisciplinary teams of highly productive researchers to address significant research problems from all perspectives.

TABLE 1. IDENTIFIED AREAS OF RESEARCH STRENGTH 2003

Areas of Research Strength

Agricultural and Veterinary Biotechnology and Bioinformatics	Includes the State Agricultural Biotechnology Centre unique in Australia and the only WA Centre recognised in the top 50 national Centres of Excellence and contains three State Centres of Excellence programs.
Contemporary Asia	This incorporates the Asia Research Centre (previously an ARC Special Research Centre funded since 1991) with research and consultancy strengths. Areas include environmental science, economics, law, biomedical and veterinary science.
Hydrometallurgy	Major collaboration and support from mining industry for mineral processing and purification. Incorporates the internationally leading AJ Parker Cooperative Research Centre for Hydrometallurgy.
Social Change and Social Equity	Research into social and psychological issues following major external change. Positive ageing, social justice and educational consultancies are key foci.
Technologies and Policies for Sustainable Development	Incorporates the UN Centre of Excellence in International Environmental Technology, the Research Institute for Sustainable Energy (RISE), the Institute for Sustainability and Technology Policy, the State Centre of Excellence for Organic Waste Management.
Ecosystem Management and Restoration	This group working with many aspects of WA's natural resources receives substantial funding from Fish Research and Development Corporation and the Grains Research and Development Corporation.

Emerging Areas of Research Strength

Interactive Media Institute	Incorporates the Interactive Television Research Institute (ITRI), the Centre for Research in Culture and Communication (CRCC) and the Centre for Electronic Commerce and Internet Studies (CECIS). Explores consumer response, applied research and social impact associated with the exciting interactive media technologies.
Paradigms in Learning and Leadership	Education is now at the forefront of national debate and State and Federal government policy. Lifelong learning through a range of new mediums, structures and assessments practices; leadership in educational and other organisations; and educational policies are the focus to this Area of Research Strength.

TABLE 2. 2003 BLOCK RESEARCH GRANT SCHEME ALLOCATIONS

Rank	State/Institution	Operating Grant (OG)	2004 RTS	2004 IGS	2004 RIBG	Block Rsch Grants (RG)	RG/OG
1	The University of Western Australia	105,747,000	28,412,257	15,968,576	12,420,404	56,801,237	53.714%
2	The University of Adelaide	107,349,000	29,161,228	15,950,625	12,193,616	57,305,469	53.382%
3	The University of Melbourne	227,894,000	53,772,689	31,395,168	21,901,068	107,068,925	46.982%
4	The University of New South Wales	199,939,000	41,612,373	24,518,694	14,903,584	81,034,651	40.530%
5	The University of Queensland	239,129,000	52,096,884	28,947,186	15,365,694	96,409,764	40.317%
6	The University of Sydney	262,814,000	56,732,551	29,161,735	17,395,230	103,289,516	39.301%
7	Monash University	248,572,000	37,800,609	20,330,754	11,037,862	69,169,225	27.827%
8	University of Tasmania	100,810,000	15,938,725	7,358,210	4,264,053	27,560,988	27.340%
9	The Flinders University of South Australia	84,446,000	11,278,855	6,777,998	3,481,966	21,538,819	25.506%
10	University of Wollongong	89,454,000	13,540,826	5,330,900	2,739,082	21,610,808	24.159%
11	The Australian National University	211,918,000	24,009,218	15,969,556	10,602,642	50,581,416	23.868%
12	Murdoch University	73,163,000	8,813,784	4,580,293	2,408,825	15,802,902	21.600%
13	Macquarie University	100,805,000	12,228,568	6,019,746	2,495,128	20,743,442	20.578%
14	The University of New England	82,360,000	8,718,335	3,703,657	2,012,574	14,434,566	17.526%
15	The University of Newcastle	137,312,000	12,473,468	6,769,514	3,903,952	23,146,934	16.857%
16	James Cook University	95,103,000	8,423,322	4,076,749	1,778,804	14,278,875	15.014%
17	La Trobe University	161,693,000	13,576,316	6,046,080	3,121,884	22,744,280	14.066%
18	Curtin University of Technology	147,445,000	11,341,374	5,624,175	1,563,468	18,529,017	12.567%
19	Swinburne University of Technology	63,592,000	4,946,000	1,876,062	853,483	7,675,545	12.070%
20	Griffith University	180,284,000	11,957,766	6,517,683	2,616,848	21,092,297	11.699%
21	Royal Melbourne Institute of Technology	156,219,000	12,110,714	4,896,266	1,106,856	18,113,836	11.595%
22	Charles Darwin University	33,641,000	2,276,166	1,188,849	384,537	3,849,552	11.443%
23	University of Technology, Sydney	146,345,000	10,100,412	3,864,921	1,419,071	15,384,404	10.512%
24	University of Canberra	56,618,000	2,696,066	1,820,481	463,091	4,979,638	8.795%
25	Deakin University	149,829,000	8,047,695	3,153,662	1,589,712	12,791,069	8.537%
26	University of South Australia	157,578,000	7,157,063	4,766,380	1,328,726	13,252,169	8.410%
27	Southern Cross University	55,708,000	2,774,619	1,304,352	450,402	4,529,373	8.131%
28	Queensland University of Technology	214,819,000	9,887,670	4,902,656	1,745,934	16,536,260	7.698%
29	Victoria University of Technology	106,772,000	5,477,190	1,783,029	607,736	7,867,955	7.369%
30	University of Western Sydney	204,658,000	8,301,897	3,415,916	1,425,752	13,143,565	6.422%
31	The University of Notre Dame Australia	4,657,000	135,566	101,540	13,954	251,060	5.391%
32	Central Queensland University	78,788,000	2,798,580	1,043,461	346,270	4,188,311	5.316%
33	Edith Cowan University	118,056,000	3,937,219	1,534,666	523,182	5,995,067	5.078%
34	University of Southern Queensland	74,482,000	2,236,515	965,513	454,828	3,656,856	4.910%
35	Charles Sturt University	106,739,000	3,060,130	1,300,509	843,377	5,204,016	4.875%
36	University of Ballarat	36,071,000	1,048,968	510,745	174,994	1,734,707	4.809%
37	Australian Maritime College	11,462,000	173,647	255,612	111,292	540,551	4.716%
38	University of the Sunshine Coast	23,803,000	566,925	137,834	41,880	746,639	3.137%
39	Australian Catholic University	71,219,000	1,047,280	514,703	187,339	1,749,322	2.456%
40	Batchelor Institute of Indigenous Tertiary Education	10,321,000	0	10,965	0	10,965	0.106%

COLLABORATIVE RESEARCH AND DEVELOPMENT

Murdoch's long-standing and successful linkages with the public and private sectors have facilitated significant levels of business investment in R&D and the successful transfer of technology from Murdoch to industry.

Murdoch's linkages in industry focused research and development were strengthened in 2003 through its success in seven national research centres that were established with government and industry funding:

- AJ Parker Cooperative Research Centre for Hydrometallurgy (supplementary funding)
- Environmental Biotechnology Cooperative Research Centre (new)
- Cooperative Research Centre for Desert Knowledge (new)
- Cooperative Research Centre for Sustainable Tourism (second round)
- Cooperative Research Centre for Molecular Plant Breeding (second round)
- Innovative Grains Cooperative Research Centre (second round)
- Research Institute for Sustainable Energy

COMMERCIALISATION

In the Knowledge Economy, the ability of universities to create, protect and leverage intellectual property is essential. It is widely recognised that university research and the intellectual property generated by this research are pivotal to the development of knowledge-based industries. However, there still exists an obvious case of market failure in Australia when it comes to turning excellent ideas and technologies into excellent businesses. In order to address this market gap, Murdoch initiated the establishment of a new joint venture in 2003 with Westscheme Superannuation Fund to create the Murdoch-Westscheme Enterprise Partnership (MWEP). Murdoch has formed a general partnership with Westscheme, Western Australia's largest private fund with over \$800 million in funds under management. MWEP will invest into early stage research opportunities at Murdoch that have strong commercial potential. Westscheme will contribute \$10 million in funding to the MWEP over ten years and pay the Division of Research and Development at Murdoch an operating budget of \$2.5 million over this period to manage the Fund on behalf of the Partners. Murdoch will contribute the Intellectual Property relating to MWEP-funded projects and the parties will hold equal shares in the partnership. The Fund will be the largest of its kind in Western Australia and will be a driver of research and innovation in the State.

A second significant commercial research and development venture in 2003 was in the growing area of drug discovery. Drug Discovery Outsourcing is a US\$3.1 billion industry in 2003, growing at an estimated 16 per cent each year to US\$6 billion by 2007. Epichem Pty Ltd was recently established at Murdoch to exploit the huge opportunities in this industry by utilising its organic chemistry expertise and providing specialist services in synthetic, medicinal, and natural product chemistry. Epichem is a joint venture between medicinal and synthetic scientific staff, formerly from the Chemistry Centre of Western Australia, and Echo Technologies Ltd. Epichem will conduct two main activities utilising the medicinal and synthetic chemistry expertise of its staff and management. The first activity will be to undertake its own intellectual property-generating research into drug discovery. The second activity will be to deliver chemistry services on a fee-for-service basis to global and local drug development and biotechnology companies. To facilitate these research and development services, Epichem has established a laboratory at Murdoch University and has secured a five-year lease. Locating Epichem on Murdoch University's campus aims to foster a close collaboration between Epichem's scientists and Murdoch University's biomedical research scientists.

Professor Andris Stelbovics
Pro Vice Chancellor (Research)



risk management



The University recognises the importance of risk management by having an appropriate policy and an Office of Risk Management. The Senior Executive Group and the Audit and Risk Management Committee monitor risk management issues and report on the outcomes to the Senate.

During 2003, the University undertook the following risk management projects -

- the completion of the initial strategic risk management plan for the University ; &
- the provision of education sessions on risk management throughout the University in line with a timetable approved by the Audit and Risk Management Committee and the Senate;
- the production of detailed operational risk management plans throughout the University in line with a timetable approved by the Audit and Risk Management Committee and the Senate.

Mr Andrew Burchfield
Director of Internal Audit & Risk Management

compliance with state records act

As required by the State Records Act 2000 Murdoch University submitted a draft Recordkeeping Plan to the Director of State Records by 5 March 2004. The Recordkeeping Plan reports the policies, procedures and activities that are or will be implemented by the University to comply with the State Records act 2000, and following feedback and approval of the draft Recordkeeping Plan by the State Records Office.

education

Creating a high quality learning environment for students continues to be paramount for Murdoch University.

2003 has been a year where demand for courses has increased at both campuses. The offering of Primary Education at the Rockingham campus has proved popular, with a high demand for places in that course.

During this year, the planning phase for the Peel campus advanced substantially, with building approvals in place for commencement of construction of a significant teaching building in early 2004. The design of this building builds on the notion of flexibility in two senses. Firstly, teaching spaces are designed to accommodate a range of teaching strategies and learning styles, and secondly they are "wired" in a way that best makes use of the developments in information and communication technologies to support the educational process.

The planning and approval of places in a new undergraduate course, nursing, has provided the impetus for an active focus on the Peel campus. The provision of nursing from 2004 will provide this fast growing region with an additional opportunity for study in this high demand course. Staff appointments into this area have been made to ensure a flying start for this new initiative.

The increasing unmet student place demand within Western Australia has placed pressure on prospective WA students in a disproportionate manner. To provide an increased choice for applicants in 2003, Murdoch introduced the option of applying for additional privately funded places in the majority of its undergraduates offerings. This route for aspiring students is a welcome initiative for the Western Australian community and adds to the multiple entry routes for which Murdoch is renowned.

A new initiative in the ongoing commitment to high quality teaching and learning is the School Development Process. In this, all offerings within a School undergo an intensive evaluation and renewal on a five-yearly cycle. This opportunity is supported by the Teaching and Learning Centre and provides Schools with tailored teaching and curriculum development to meet the needs of students and employers. This process allows for the development of an aligned curriculum that is, as far as possible, vertically integrated.

Professor Jan Thomas
Pro Vice Chancellor (Academic)



regional engagement

Murdoch University has a well-established regional campus at Rockingham, with more than 900 students enrolled there in 2003, and a new campus soon to be built in Mandurah to serve the Peel region. Murdoch University works closely with the community, local government and industry in these areas to ensure that the University's goals are aligned with the region's needs and vision for a sustainable and successful future.



In 2002 Murdoch was successful in attracting a \$2 million grant, in addition to \$2.5 million announced in 2003, from the DEST Capital Development Pool to build Stage One of a university facility to be co-located with the Mandurah Senior College and Challenger TAFE on the Peel Education and TAFE campus in Mandurah. After a master planning process, Murdoch was granted leasehold of a 2.4 hectare parcel of land for the development.

The City of Mandurah also showed its strong support in a Memorandum of Understanding with Murdoch University by providing a \$1 million interest free loan to enable the immediate start for planning and design work of the project.

The first course to be offered on the new campus, selected in response to community consultation and market research, is nursing. Late in the year, DEST released 25 new university places to launch the nursing program at the Peel campus and the first intake of students will begin the course in February 2004 in temporary accommodation made available by our campus partners. The Peel Health Campus will support this new venture by providing clinical placements and access to excellent training facilities.

It is gratifying that demand for the Nursing program is high, in spite of the very late announcement of the new places, and that more than 90 per cent of the applicants are from the Peel region. Murdoch, with its campus partners, continued to co-fund a Pathways Officer at Peel to facilitate articulation and student movement across the sectors.

At the Rockingham campus, student demand has been rising, with the primary teacher education program proving to be especially popular. This program directly addresses a need in the Rockingham/Kwinana region, both in terms of offering excellent employment prospects for local graduates as well as in terms of raising aspirations and the quality of education in the region.

Murdoch University continued to offer the very successful access program, UniFocus, at the Peel and Rockingham campuses, targeting local unemployed people. The UniTrack program, which enables local year 12 students to take a Murdoch University unit and use it to gain University entry, was also very successful. This was supported with scholarships provided by the Peel Development Commission, the City of Mandurah and the Kwinana Industries and Education Partnership for the participating students.

A variation of the UniFocus program called EngFocus was successfully introduced to attract local students to the engineering courses at the Rockingham campus. The Alcoa Refinery at Kwinana continued to provide scholarships to encourage students, especially women, into the Rockingham campus engineering courses.

With the support of the new Strategic Plan (2003-2007) there has been an increased emphasis on developing research partnerships and projects that are relevant to the communities and industries of the Rockingham-Kwinana and Peel region. The Pro Vice Chancellor (Regional Development) and Pro Vice Chancellor (Research) have worked jointly to facilitate dialogue between the University and possible regional research partners.

The foyer of the Rockingham Regional Library, a prize-winning facility that is shared by Murdoch University, Challenger TAFE and the City of Rockingham, was dedicated to the late Professor Lethbridge at a special naming ceremony. Professor Lethbridge played a key role in the establishment and development of the campus.

Professor Kateryna Longley
Pro Vice Chancellor (Regional Development)

international outlook

Despite this growing global uncertainty, the number of expressions of interest for study places at Murdoch continued to increase. This increase however, was not matched by an equivalent increase in actual student arrivals, confirming the very real impact of global uncertainty on the export of education services.

The vagaries of the external environment in 2003 combined with the discrepancy between applications and actual arrivals provided Murdoch University with an opportunity to review and reflect on its international activity. In September 2003, external consultants were engaged to examine, review and report on the international performance of the University. The Report concluded that Murdoch is performing in the medium range when compared with all universities in Australia. In real terms, the University is achieving at the 'right' level or slightly better for its size. Furthermore, the Report indicated that any sustained impetus to growth in student numbers would require concentrated effort in at least two high growth and high volume markets such as China and India. However, that effort would need to be supported by the removal of a number of major obstacles to gain successful market entry in these high volume markets. As a priority for future international growth, the University will need to address the absence of campus 'feeder' mechanisms such as English language support and university-link courses. The University has flagged this 'feeder' concept along with a comprehensive branding campaign and course review as major projects for 2004 as part of the revitalisation of the international program.



The international student population at Murdoch University in 2003 comprised 16.2 per cent of the total University population, with 86.4 per cent of students being enrolled in undergraduate courses and the remaining 13.6 per cent enrolled in postgraduate courses. Some 65 countries are represented by the international student population on campus at any one time. The blending of cultures, ethnic groups and religions has created a truly vibrant and multi-cultural atmosphere at Murdoch and the contribution of our international students to the 'real' internationalisation of the campus and campus life during 2003 was evident in their academic successes as well as their commitment to and participation in campus life.

The number of students seeking to undertake an international exchange program continued to grow and the selected locations were again highlighted by diversity. A change in student attitudes regarding locations was also discernible as students appeared to be not only seeking an international experience but were actively building their curriculum vitae during their degree programs.

The University's new Guidelines for Transnational Academic Activity ("offering courses offshore") restricted new offerings to proposals of appropriately high academic and contractual standards, such as Bachelor in Chiropractic in Japan in partnership with National Enterprise Team. The emphasis on quality managed academic courses and financially rewarding partnerships has been a positive development for the University and one that will continue into the future. In this way, the University's governance processes are assured of the high quality of Murdoch offerings regardless of geographic location.

The strategic initiatives being considered by the University for 2004 should benefit the international business of the University and lay a durable foundation for the next triennium.

Ms Kerry Hutchinson
Managing Director
Division of Student Services, Marketing and International Affairs

human resources

The Human Resource team continued to make significant progress in designing the key human resource management foundations to support the future growth strategies for Murdoch University.

For example a comprehensive Leadership Development Framework was approved to provide the necessary skills, knowledge and training for staff within a formal but flexible framework. This program coupled with the redesign of the performance and development review process provides a very targeted approach for identifying staff development needs.

These vital foundations assist Murdoch focus its leadership development within the context of the organisation's strategic plan.

During the year a comprehensive review of human resource policies and procedures was commenced as part of aligning the new programs, clarifying ambiguity, setting new policy and eliminating redundant procedures. This will realise improved administration efficiencies for the University.

Concerted efforts saw improvements in safety performance as well as consultation with representatives from all areas throughout the University joining the Occupational Health and Safety Committee. The Committee representatives underwent a 5-day accredited training program as part of their role. The Committee continued to focus on identifying issues for resolution and planning for future safety programs for 2004.

A number of initiatives in the Human Resources system area were achieved during 2003 including, organisational management reporting on age profiles (including projected retirement), absenteeism, gender, service and classification analysis. Reports were presented to SEG in October 2003.

Implementation of an additional on-cost for long service leave commenced January 2003. The project was run in conjunction with the Office of Financial Services and ensures the University's long term obligations for long service leave are addressed.

A major review of the Academic Promotions and Probationary review process was undertaken the outcomes of which will be implemented in 2004.

Industrial relations continued to be managed effectively with no major disputes arising during the course of the year. Enterprise Bargaining negotiations were progressed leading to the development of draft agreements for both academic and general staff.

Mr Chris Jeffery
Director of the Office of Human Resources

EQUITY UPDATE

Equity and social justice principles are embedded in the University's Vision Statement, Defining Themes and Values. The Equity Plan for the years 2003 to 2007 encapsulates Murdoch's commitment to equity and social justice principles and reflects the integration of these principles into teaching, research and community service.

THE PLAN 2003 – 2007

The Equity Plan identifies Murdoch's equity priority areas and targets, outlines goals, defines the strategies to achieve them and provides focus on evaluating progress towards attaining those goals. This is a dynamic working document that assists the University community in everyday planning and operations while reporting procedures to equity committees, the Senior Executive Group and Senate have been established to oversee the evaluation and quality assurance of the performance against targets.



While the Plan rests the ultimate responsibility for implementation with the University's Senior Executives, the operational plan involves each member of the University community, supervisory staff and Administrative Heads in responsibility and accountability.

Objectives and Strategies provided in the Equity Plan aim to increase access and success to undergraduate programs for all people from DEST defined equity groups; ensure the integration of student equity considerations in all University academic planning and review; increase numbers, retention and success rates of Indigenous Students; and achieve institutional commitment to the University Vision and guiding principles in relation to equity and social justice across all areas of operation.

MANAGEMENT AND PLANNING

The University has established specialised committee structures to oversee the implementation of equity business:

- The Equity and Equal Opportunity Committee (EEOC) is a Senate Committee that recommends on equity priorities for the University on a three year cycle; recommends targets for the priority areas using management recommendations; reviews performance against targets in these areas for each of the designated equity groups and to report annually on these to Senate, including any recommendations for changes to targets and/or strategies.
- The Equity Coordinating Committee (ECC) is a management Committee responsible for overseeing the implementation of equity policy, including strategies to meet targets; commissioning analysis of equity data with a view to developing more effective strategies; raising issues for discussion by the EEOC; and overseeing the allocation and expenditure of resources on equity matters.

MONITORING AND QUALITY ASSURANCE

Equity outcomes are efficiently monitored and strategies are reviewed each year as appropriate and reported to Senate for endorsement. The University's equity performance reviews are linked to targets and strategies therefore making the quality assurance process an integral part of the equity management and planning structure.

As part of the quality assurance process student access, retention, success and completion rates are monitored against State and National benchmarks. Student data by equity group and field of study is collected annually to demonstrate the performance trend, evaluate and review strategies in response to outcomes.

STUDENT ACCESS, SUCCESS AND RETENTION

Women In Engineering

The access rate for women in Engineering at Murdoch is 15.79 per cent, which is above the national average of 14.56 per cent. This is a marked improvement in the number of women accessing Engineering at Murdoch.

Women Undertaking Research Degrees

Women have also shown a strong growth in access to research degrees (55.38 per cent) with the numbers well above the national average (51.78 per cent).

Students With Disabilities, Rural And Isolated Group

Particular areas of improvement are evident in access and participation for both Rural and Isolated groups. The national access indicator for People with Disabilities in higher education is 3 per cent, however, Murdoch has an access rate of 5.43 per cent. More particularly there has been a demonstrable improvement in the retention rates for this group, again above the national indicator of 0.959. Murdoch's retention data shows an indicator of 1.040 for this equity group.

ADVISORY GROUP ON DISABILITY – STUDENTS AND STAFF (AGDSS)

To complement the functions of the equity management structures, the Advisory Group on Disability – Students and Staff (AGDSS) and the Indigenous Staff Consultative Group (ISCG) have been established to provide support in the implementation of the business flowing out of the identified strategies.

The primary aim of the AGDSS is to raise the profile and voice of students and staff with disabilities and/or medical conditions throughout the Murdoch University community. The secondary aim of the AGDSS is to extend this profile to the general community and to raise Murdoch University's profile as a preferred institution for study by students with disabilities and/or medical conditions.

The Indigenous Staff Consultative Group (ISCG) is a forum for all Indigenous staff and therefore it is well positioned to contribute to policy development, the planning of strategic direction and to identify issues affecting Indigenous staff and students on campus. It provides advice on indigenous 'protocols' and canvasses community opinion on current best practice.

The ISCG advises the ECC on matters relating to the development of employment opportunities, opportunities for Indigenous staff input into teaching, student support, curricula development and to build stronger relationships with external Indigenous organisations and communities.

MUSTt - VIP Consultation

Early this year the University formed a MUSTt - VIP consultation which is a specific Consultative Group of Students who are Blind or Vision Impaired. MUSTt - VIP consultation was formed in response to a number of access issues identified by the Advisory Group On Disability – Students And Staff (AGDSS). It was felt that the MUSTt - VIP consultation group could provide advice to Equity on addressing current barriers to both the physical and intellectual environment here at Murdoch while at the same time offering an informal network to the students.

Equity Student Support Network

Student Learning Equity Tutor and the Equity Coordinator have introduced regular lunchtime meetings for equity entry students. This is providing the opportunity for networking and sharing of ideas amongst students from different disciplines and at varying times in their enrolment. The support network aims to increase retention, success rate while creating a welcoming environment for students from equity groups.

\$48,051 ALLOCATED FOR THE DISABILITY EMPLOYMENT FUND

The Vice Chancellor Professor John Yovich has allocated over \$48,000 for the Vice Chancellor's Disability Employment Fund. Since its inception in 2000, the Fund has provided people with disabilities with employment opportunities in various areas of the University such as Financial Services, Human Resources, the Library, Office of Facilities Management, School of Environmental Science, IT Services, Health and Counselling, Veterinary Science, Equal Opportunity and Social Justice Section etc. The key to Murdoch's success in this area is that the strategy is geared towards focussing on what people can do, and not what they can't do. Recognising the skills and special abilities of people is part of embedding the university in the community.

Working in partnership with agencies such as Options Employment by Good Samaritan Industries, Deafinite Employment Service, Rocky Bay Employment Services, Commonwealth Rehabilitation Services, Autism Society, South Metropolitan Personnel and many others, Murdoch will be making people with disabilities more competitive in the job market by offering work trials and contracts, and providing a welcoming environment.

The Vice Chancellor's Disability Employment Fund supports people with disabilities to establish their interests and skills, to get work experience and references and to create a strong resume, was the right choice. The Fund reinforces the University's commitment towards equity employment.

SKILLS BANK WEBSITE DEVELOPED IN 2004

The newly developed Skills Bank website forms part of Murdoch University's equity employment initiatives in that it provides a quick reference database for supervisors and Administrative Heads to assist them in finding potential employees with disabilities.

Skills Bank currently lists skills of people with special needs; skills that are relevant to Murdoch University placements. The list provides a brief description of each type of skill and whether someone has earned experience previously in that area.

The aim of creating the Skills Bank is to formalise a procedure whereby administrative heads in the University with the authority to recruit personnel, can refer to the list while deciding on a vacancy. The Skills Bank gives an opportunity to the Murdoch community to conform to the University's equity employment commitments. The other purpose of the Skills Bank is to build awareness within the Murdoch administrative heads on the wide range of areas that people with special needs are skilled in, thereby dispelling any stereotypes that are pervasive in our community in general.

Linked to the Skills Bank, relevant information on government guidelines and incentives to equity employment are provided, as well as information on Murdoch University's strategies and advancements. For example, it provides information on government financial assistance available for employers to cover some of the cost towards workplace modification and work-trials for potential employees with disabilities and information on the role of the Equal Opportunity and Social Justice section in implementing placements through consultations and liaison.

The aim of the Skills Bank website is to assist Divisions in the implementation of equity employment strategies as provided in the Equity Plan.

HARMONY WEEK 2004 CELEBRATIONS

The 3rd Murdoch University's Harmony Week Ethnic Film Festival was held from 16 March – 19 March 2004. Entertainment media with its powerful presence is capable of building awareness and insight into cultures. The Festival is a partnership between the City of Melville, Murdoch University, the Tamil Association of Western Australia and the Office Of Multicultural Interests. This annual event is also supported by the Film and Television Institute of WA and Goundrey wines.

The 3rd Harmony Week Ethnic Film Festival was a successful event with positive feedback from people who attended. The event attracted over 800 people during 8 film sessions held in 4 days. The Ethnic Film Festival has grown from attracting 373 people over 6 days in 2002 to attracting more than 800 people over four days in 2004.

ASSISTIVE TECHNOLOGY EXPO 2003

In October 2003 Murdoch University launched a landmark Assistive Technology Expo, the first of its kind to be organised in the tertiary education sector in WA and perhaps nationally.

The University organised the Assistive Technology Expo in response to the need to raise awareness about assistive technologies and provide employers and community members with an opportunity to become better informed on issues surrounding workplace diversity. This included in particular the role of technology in overcoming barriers facing people with disabilities in the workplace and in the classroom. An estimated 500 visitors attended the Expo over the two days. Visitors included community members, representatives from schools, universities, businesses, government departments, disability service providers, students and staff members of Murdoch University.

Participants and sponsors included SingTel Optus Pty Ltd, Apple Computer Australia, Voice Perfect Systems Pty Ltd, WA Deaf Society Inc., Esplanade Hotel, Fremantle, Channel 7 – Close Captions Department, Perth, Australian Communication Exchange Limited, Queensland, The Commonwealth Department of Family and Community Services, City of Melville, Spectronics, WA Police, Pulse Data, Association for the Blind WA, Independent Living Centre of WA (ILC), Assisted Listening Australia (formerly WA Electronics), University of Sunshine Coast, Queensland, Quantum Technology, Regional Disability Liaison Office WA, Quikkut – The New Tool for Independent Living, Fishers With Disabilities.

'DRAGON NATURALLYSPEAKING[®]'

SOFTWARE INSTALLED FOR STUDENTS WITH DISABILITIES

Murdoch University continues to showcase that using Assistive Technology such as Voice Perfect is a step towards ensuring that barriers are removed to enable people with special needs to lead an independent life and attain their full potential in employment and education. The Equal Opportunity and Social Justice Section of Murdoch University organised the installation of a powerful speech recognition software, 'Dragon NaturallySpeaking[®]', on a computer located in the Student Equity Resource room and dedicated for students and staff with special needs. The software enables one to launch programs, send emails, create documents and reports, and manage desktop -- all by voice. This additional software will increase the effectiveness of students' use of the existing adaptive technology such as JAWS, Zoomtext, Read & Write.

The software 'Dragon NaturallySpeaking - version 7.3 (Preferred)[®]' was donated by Voice Perfect Systems Pty Ltd to Murdoch University during the Assistive Technology Expo organised by the University's Equal Opportunity and Social Justice Section in October 2003.

SCHOLARSHIPS FOR EQUITY STUDENTS

Merit Based HECS Exempt Scholarships

Merit Based HECS Exempt Scholarships continues to support 13 undergraduate equity students to complete their tertiary education.

Rockingham Skill Training Committee Gordon Smith Memorial Scholarship

This year two students from the Rockingham/Kwinana area received \$500 to assist them with their educational costs.

Postgraduate Access and Equity Scholarship 2004

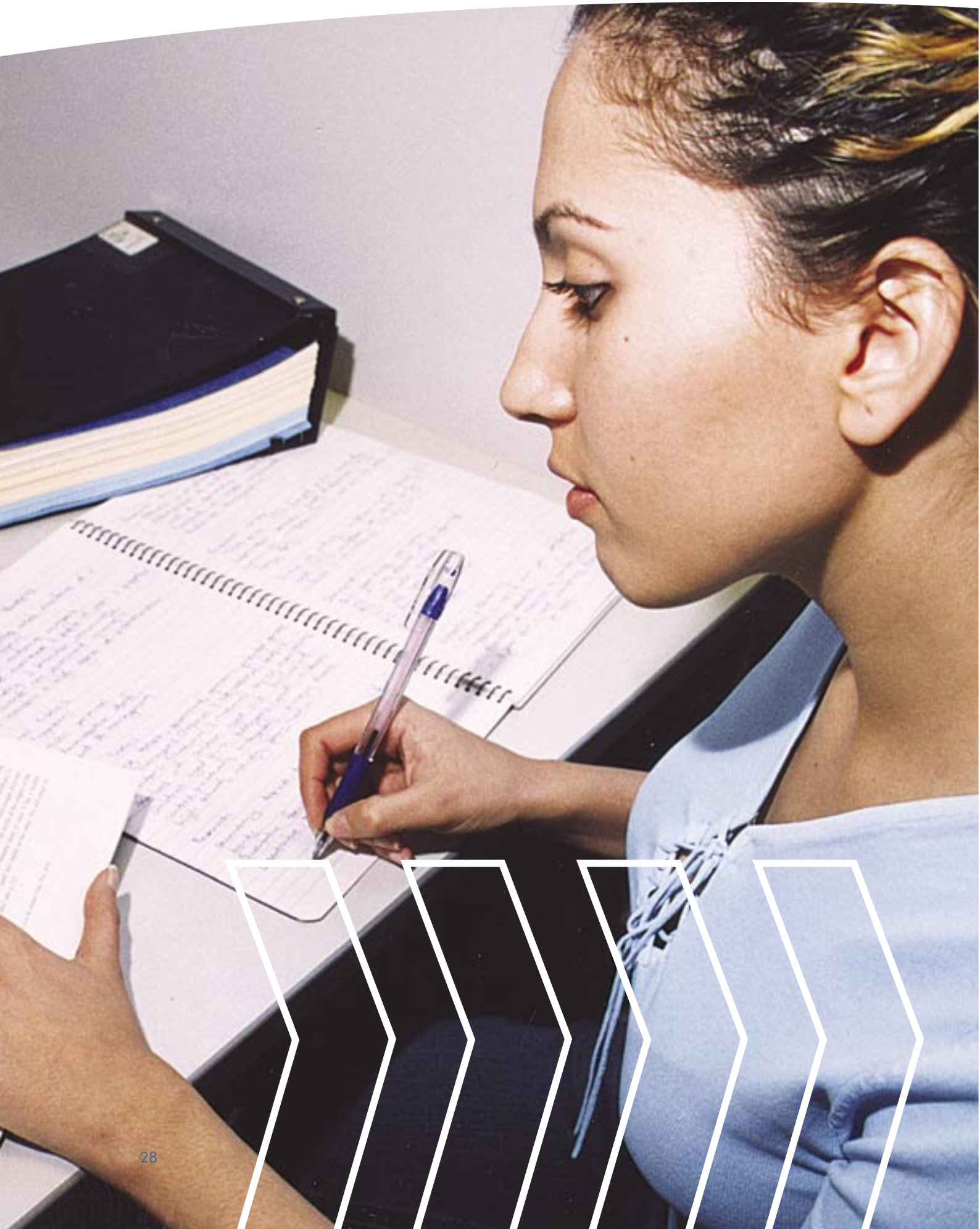
5 Scholarships were offered in First Semester 2004 to Australian students enrolled in fee liable postgraduate coursework programmes and a second round of offers will be made to students commencing studies in the Second Semester of 2004.

Dr Casta Tungaraza

Manager of Equal Opportunity and Social Justice



characteristics
of the
student
population



SUMMARY STATISTICS

Student Enrolments

Level	1999	2000	2001	2002	2003
Higher Degree Research	668	705	710	730	777
Higher Degree Coursework	918	1,094	1,049	777	568
Other Postgraduate	564	650	754	926	1,007
Undergraduate	9,855	9,749	9,967	10,423	10,563
Non-Award	61	99	131	162	123
Total	12,066	12,297	12,611	13,018	13,038

Broad Field of Study	1999	2000	2001	2002	2003
Agriculture, Environmental and Related Studies	608	596	557	520	542
Creative Arts	875	932	1,017	1,100	1,090
Education	1,039	1,126	1,338	1,625	1,842
Engineering and Related Technologies	180	167	182	202	232
Health	404	426	442	532	638
Information Technology	660	737	880	1,059	1,007
Management and Commerce	2,804	2,995	2,820	2,457	2,103
Natural and Physical Sciences	1,261	1,324	1,382	1,407	1,440
Non-Award	61	99	131	159	123
Society and Culture	4,174	3,895	3,862	3,957	4,021
Total	12,066	12,297	12,611	13,018	13,038

Student Load (EFTSU)

Level	1999	2000	2001	2002	2003
Higher Degree Research	454	482	502	512	562
Higher Degree Coursework	722	1,022	942	492	319
Other Postgraduate	279	316	340	417	477
Undergraduate	7,129	7,115	7,189	7,555	7,772
Non-Award	22	42	33	36	30
Total	8,606	8,977	9,007	9,012	9,159

Broad Field of Study	1999	2000	2001	2002	2003
Agriculture, Environmental and Related Studies	394	404	355	356	357
Creative Arts	653	735	789	849	860
Education	674	705	799	992	1,153
Engineering and Related Technologies	123	109	127	139	167
Health	334	363	372	446	540
Information Technology	467	512	648	765	717
Management and Commerce	2,285	2,535	2,312	1,764	1,550
Natural and Physical Sciences	937	994	997	1,019	1,049
Non-Award	22	42	33	35	30
Society and Culture	2,716	2,579	2,574	2,646	2,738
Total	8,606	8,977	9,007	9,012	9,159

Completions

Level	1998	1999	2000	2001	2002
Higher Degree Research	79	72	62	88	94
Higher Degree Coursework	208	230	380	528	338
Other Postgraduate	217	199	260	296	372
Undergraduate	1,773	2,072	2,184	2,311	2,380
Total	2,277	2,573	2,886	3,223	3,184

Broad Field of Study	1998	1999	2000	2001	2002
Agriculture, Environmental and Related Studies	159	157	122	188	154
Creative Arts	188	237	234	282	359
Education	230	236	279	255	333
Engineering and Related Technologies	20	30	24	32	45
Health	142	105	74	85	82
Information Technology	89	140	156	200	234
Management and Commerce	632	652	887	1,007	831
Natural and Physical Sciences	197	224	321	344	337
Society and Culture	620	792	789	830	809
Total	2,277	2,573	2,886	3,223	3,184

Staff - Full Time Equivalence (FTE)

Staff Function	1999	2000	2001	2002	2003
Teaching Only	92	114	125	120	126
Research Only	52	48	52	62	64
Teaching & Research	339	344	348	357	363
Other	17	23	28	34	24
Non-Academic	777	775	744	777	778
Total	1,277	1,304	1,297	1,350	1,354

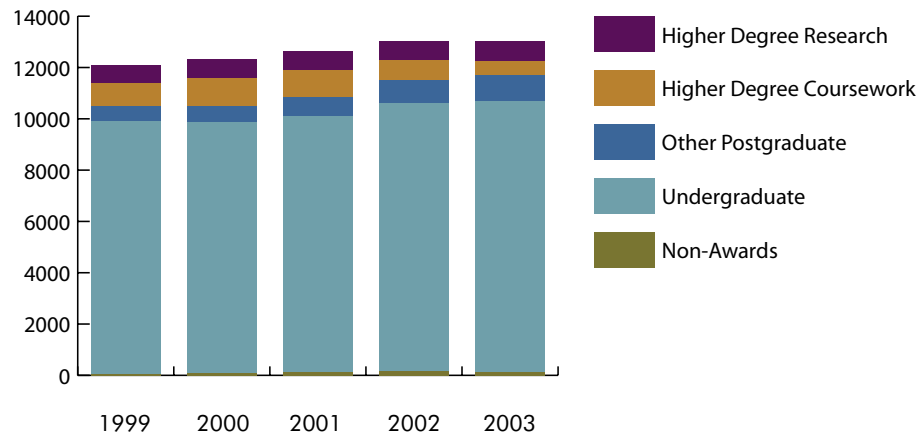
Student Load (EFTSU) per Teaching Staff FTE

	1999*	2000*	2001*	2002*	2003*
Load/FTE Ratios	18.5	17.6	17.2	17.9	18.1

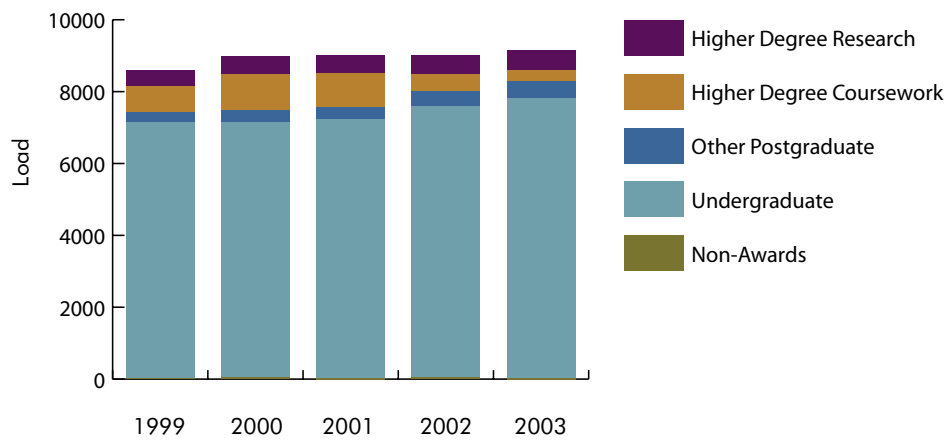
*Excludes offshore student load

Offshore students to be deducted from load/fte ratio	619	939	852	463	302
--	-----	-----	-----	-----	-----

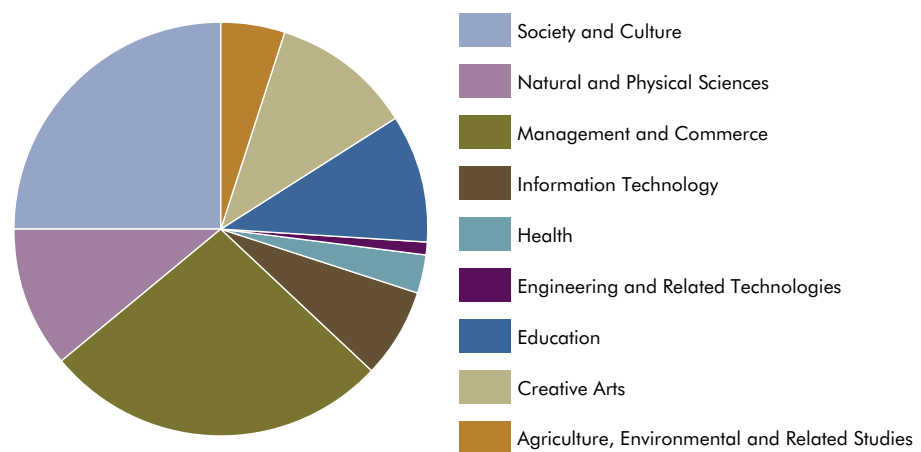
ENROLMENTS BY YEAR AND LEVEL



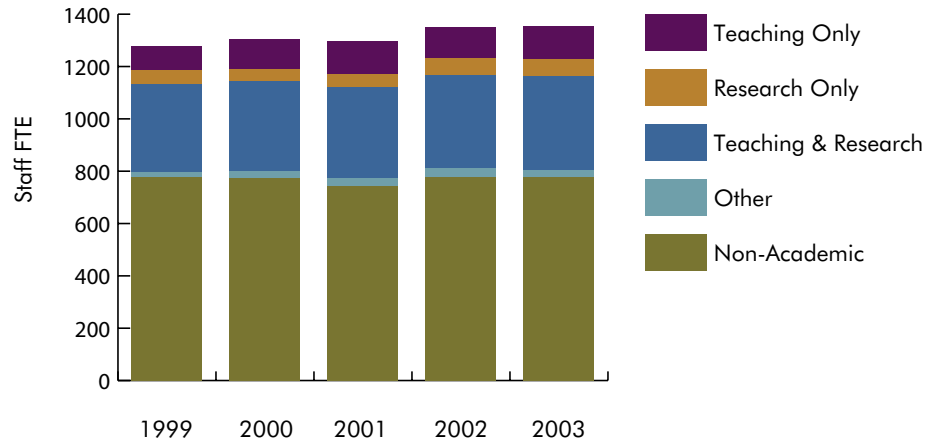
LOAD (EFTSU) BY YEAR AND LEVEL



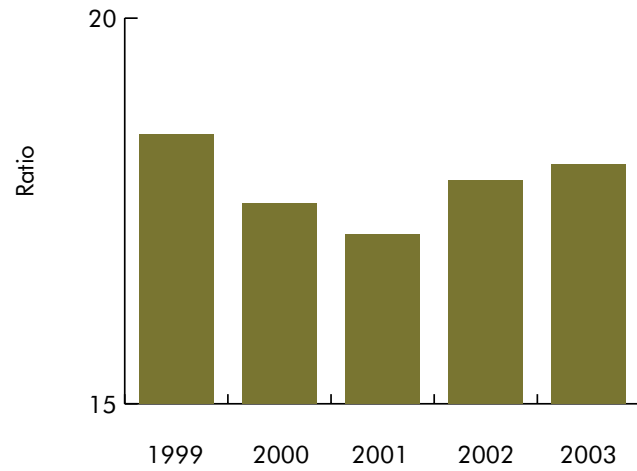
COMPLETIONS BY BROAD FIELD OF EDUCATION - 2002



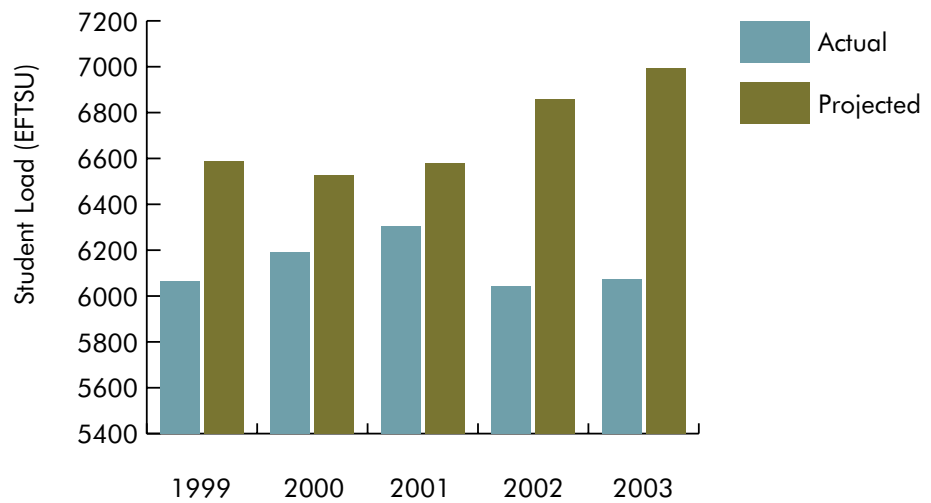
STAFF FTE BY FUNCTION AND YEAR



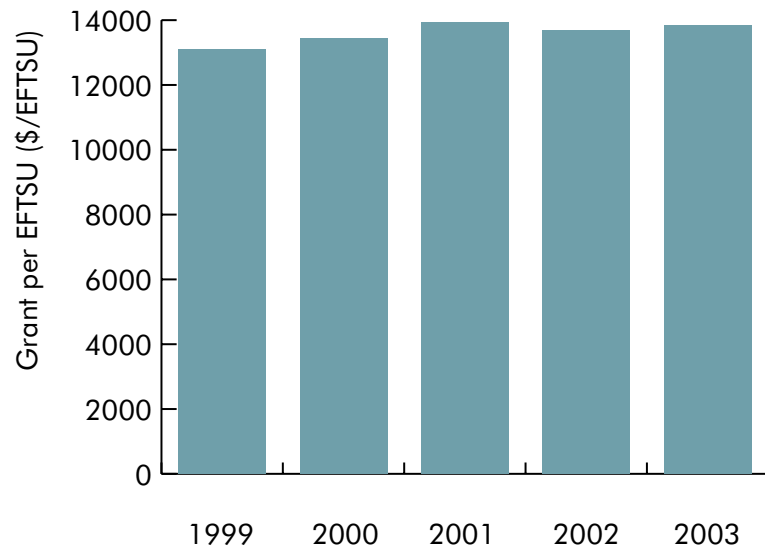
STUDENT LOAD (EFTSU) PER TEACHING STAFF FTE



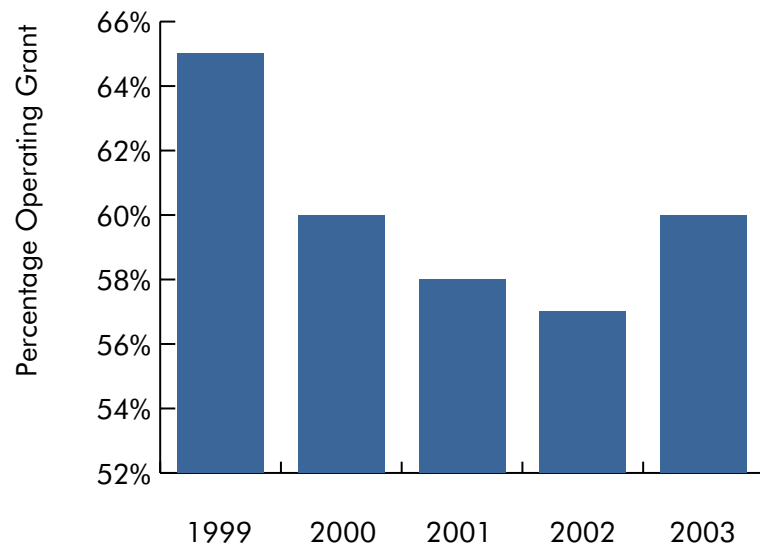
TARGET AND ACTUAL OPERATING GRANT LOAD



OPERATING GRANT PER OPERATING GRANT LOAD



PERCENTAGE OPERATING GRANT OF TOTAL INCOME



EQUITY STUDENT STATISTICS

Broad Field of Study	1999	2000	2001	2002	2003
Aboriginal & Torres Strait Islanders					
Agriculture, Environmental and Related Studies	4	4	3	3	2
Creative Arts	8	7	8	7	12
Education	7	8	21	29	33
Engineering and Related Technologies				1	2
Health	14	14	12	9	7
Information Technology	1	1	3	6	6
Management and Commerce	6	5	4	2	2
Natural and Physical Sciences	8	6	12	9	10
Society and Culture	89	106	119	132	97
Total	137	151	182	198	171

Female

Agriculture, Environmental and Related Studies	339	333	295	265	270
Creative Arts	578	618	666	707	705
Education	837	912	1,066	1,281	1,458
Engineering and Related Technologies	28	24	32	39	38
Health	288	304	320	379	460
Information Technology	143	153	188	203	204
Management and Commerce	1,429	1,509	1,446	1,277	1,112
Natural and Physical Sciences	687	731	741	756	774
Non-Award	33	42	74	104	70
Society and Culture	2,713	2,562	2,580	2,613	2,651
Total	7,075	7,188	7,408	7,624	7,742

Rural

Agriculture, Environmental and Related Studies	58	52	52	48	50
Creative Arts	39	36	29	31	40
Education	99	115	138	172	186
Engineering and Related Technologies	26	27	17	16	16
Health	57	62	51	49	53
Information Technology	34	44	35	46	41
Management and Commerce	94	96	88	90	87
Natural and Physical Sciences	96	106	107	80	94
Non-Award	1	4	7	35	26
Society and Culture	206	197	195	226	223
Total	710	739	719	793	816

Broad Field of Study	1999	2000	2001	2002	2003
Isolated					
Agriculture, Environmental and Related Studies	54	45	44	28	20
Creative Arts	31	27	20	20	13
Education	119	154	149	189	164
Engineering and Related Technologies	14	10	12	8	0
Health	17	18	15	16	16
Information Technology	32	28	26	24	3
Management and Commerce	35	32	28	18	12
Natural and Physical Sciences	65	63	52	47	32
Non-Award	1	4	1	3	0
Society and Culture	134	132	105	94	65
Total	502	513	452	447	325

Low Socio-Economic Status

Agriculture, Environmental and Related Studies	139	150	122	125	133
Creative Arts	155	133	148	166	160
Education	303	368	445	527	578
Engineering and Related Technologies	55	56	53	61	83
Health	78	91	83	85	91
Information Technology	157	170	187	224	206
Management and Commerce	380	368	376	335	320
Natural and Physical Sciences	294	296	272	277	281
Non-Award	9	18	26	50	42
Society and Culture	885	854	830	861	869
Total	2,455	2,504	2,542	2,711	2,763

Non-English Speaking Background

Agriculture, Environmental and Related Studies	13	12	8	9	11
Creative Arts	9	6	12	9	9
Education	9	6	8	11	17
Engineering and Related Technologies	5	2	9	11	12
Health	5	6	5	5	6
Information Technology	27	27	27	43	27
Management and Commerce	72	61	49	46	56
Natural and Physical Sciences	30	24	21	21	26
Non-Award	2	6	1	2	5
Society and Culture	51	46	40	49	54
Total	223	196	180	206	223

Broad Field of Study	1999	2000	2001	2002	2003
People with a Disability					
Agriculture, Environmental and Related Studies	15	14	13	11	10
Creative Arts	29	30	39	45	36
Education	32	36	56	69	70
Engineering and Related Technologies	1		5	7	0
Health	8	7	4	8	4
Information Technology	26	26	36	41	8
Management and Commerce	47	59	63	63	26
Natural and Physical Sciences	39	40	60	63	36
Non-Award	1	4	4	1	2
Society and Culture	221	230	280	288	220
Total	419	446	560	596	412

Summary (Percent of Population)

Total Student Enrolments	12,066	12,297	12,611	13,018	13,038
Aboriginal & Torres Strait Islanders	1.1%	1.2%	1.4%	1.5%	1.3%
Female	58.6%	58.5%	58.7%	58.6%	59.4%
Rural	5.9%	6.0%	5.7%	6.1%	6.3%
Isolated	4.2%	4.2%	3.6%	3.4%	2.5%
Low Socio-Economic Status	20.3%	20.4%	20.2%	20.8%	21.2%
Non-English Speaking Background	1.8%	1.6%	1.4%	1.6%	1.7%
People with a Disability	3.5%	3.6%	4.4%	4.6%	3.2%

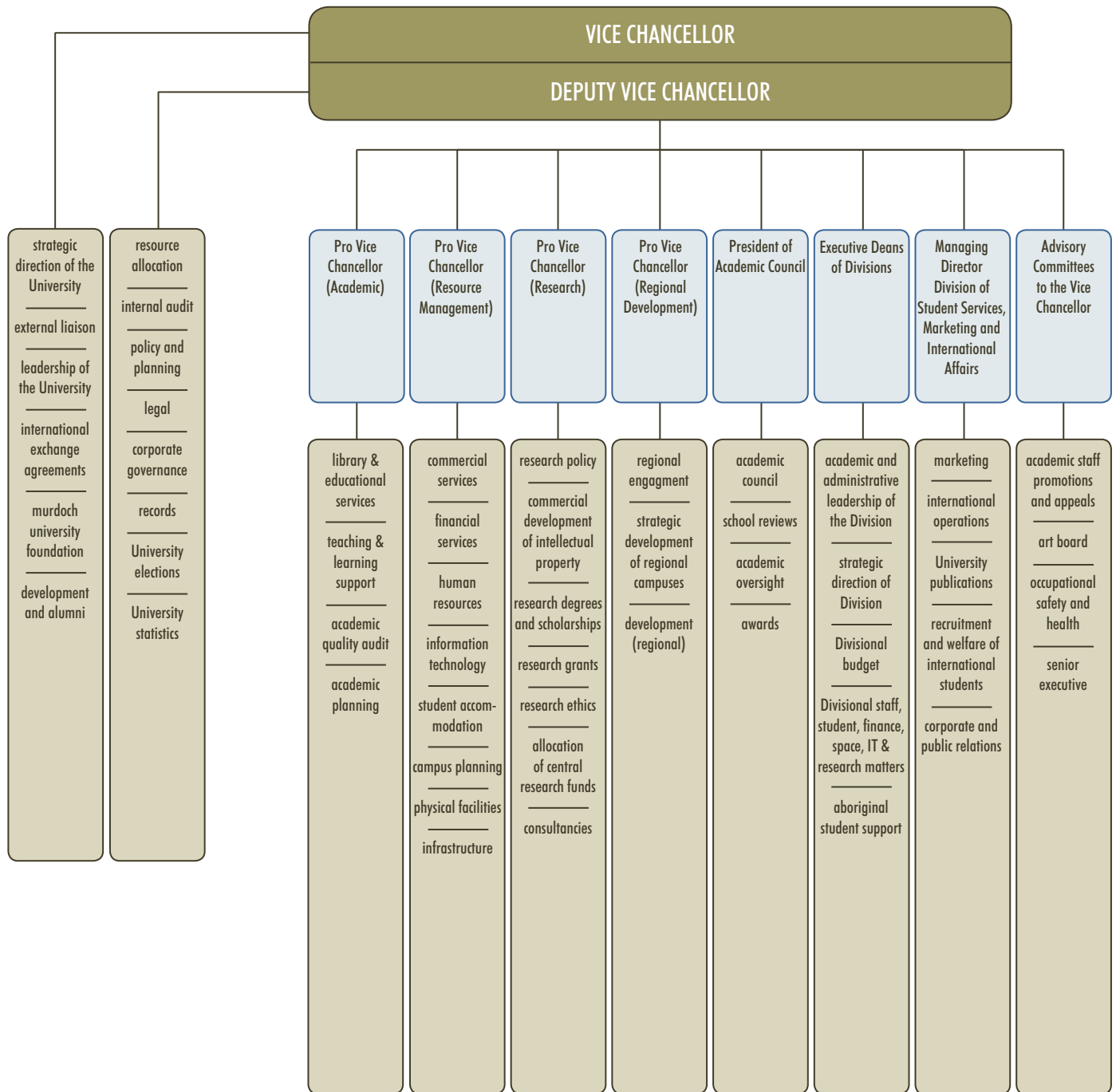
REPORT OF OPERATIONS

COMMONWEALTH OPERATING GRANT AND LOAD

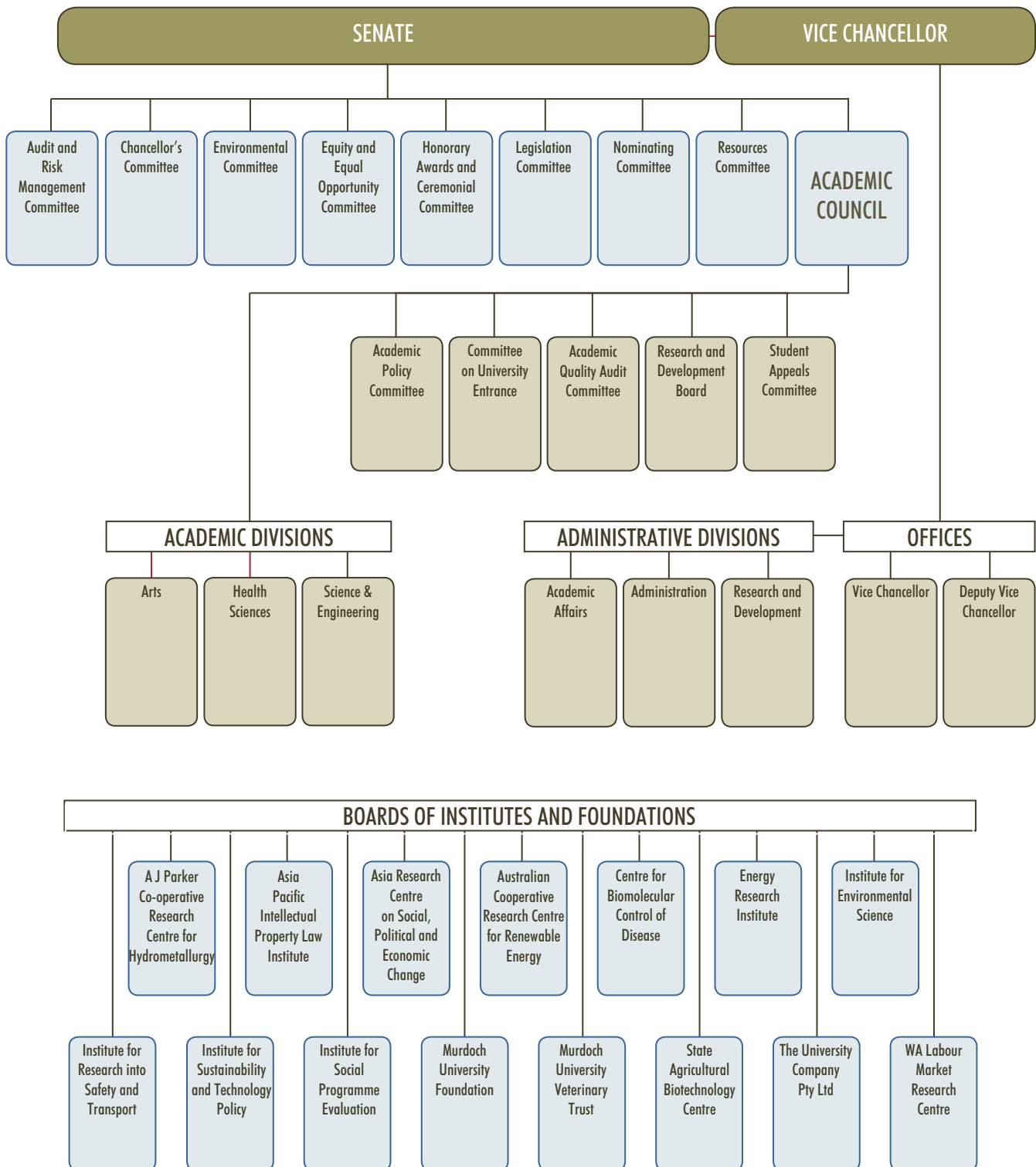
	1999	2000	2001	2002	2003
Operating Grant Load (EFTSU)					
Target	6,065	6,190	6,307	6,045	6,075
Actual	6,589	6,526	6,581	6,857	6,995
Variance (EFTSU)	524	336	274	812	920
Variance (%)	8.64%	5.43%	4.34%	13.43%	15.15%
Undergraduate Target Load (EFTSU)					
Target	5,340	5,530	5,670	5,735	5,800
Actual	5,929	5,883	5,933	6,201	6,351
Variance (EFTSU)	589	353	263	466	551
Variance (%)	11.03%	6.38%	4.64%	8.12%	9.50%
Funding Sources					
Operating Grant (\$000)	79,200	82,051	87,469	91,758	96,714
Operating Grant (at 2003 prices) (\$000)	86,215	87,795	91,614	93,928	96,714
Outside Research Grants & Donations (\$000)	15,500	19,877	20,177	22,963	27,411
Operating Grant per EFTSU (at 2003 prices)	13,085	13,453	13,921	13,698	13,826
Total Commonwealth Grant as a Percentage of Total Income	65%	60%	58%	57%	60%
External Research Funding (at 2003 prices)					
Number of Competitive Research Grants	175	147	164	230	210
Value of Competitive Research Grants (\$000's)	5,844	7,147	6,988	8,820	10,467
Value of Non-Competitive Grants (\$000's)	10,531	13,842	13,816	13,871	15,463
Total Research Grants (\$000's)	16,375	20,988	20,804	22,691	25,929
Index	1.088568	1.070007	1.047385	1.023648	1.000000
Cost Adjustment Factor*	1.066707	1.085211	1.108650	1.134358	1.161183

*: from 2004 to 2006 Triennium Report interim pre-print release (Appendix A, pg 116)

functional chart



organisational chart



officers of the university

VISITOR

- His Excellency the Governor of Western Australia

CHANCELLOR

- Emeritus Professor Geoffrey Bolton, AO, CitWA, MA *W. Aust.*, DPhil *Oxf.*, PhD *W. Aust.*, HonDLitt *Murd.*, HonDUniv *Murd.*, FRHistS, FAHA, FASSA, FRSA

PRO-CHANCELLOR

- Judge Kate O'Brien, LLB *W.Aust.*, B*juris W.Aust.*

VICE CHANCELLOR

- Professor John Yovich, BSc *Murd.*, BVMS(Hons) *Murd.*, DipLargeAnimalSurg *Guelph*, MS *ColoradoState*, PhD *ColoradoState*, Diplomate ACVS

DEPUTY VICE CHANCELLOR

- Professor Jeffrey Malcolm Gawthorne, BSc PhD *W. Aust.* (Retired 5th December 2003).

PRO VICE CHANCELLOR (ACADEMIC)

- Professor Janette Thomas, BSc *Murd.*, BVMS *Murd.*, MVS *Melb.*, PhD *Murd.*, MACVSc, (from 10 February 2003)

PRO VICE CHANCELLOR (RESEARCH)

- Professor Val Alder, BSc *Lond.*, ARCS *Lond.*, PhD *W. Aust.* (until October 2003)
- Professor Andris Stelbovics, BSc(Hons) *Adel.*, PhD *Adel.*, FAIP (from 3 November 2003)

PRO VICE CHANCELLOR (RESOURCE MANAGEMENT)

- Mrs Gaye McMath, BCom *Melb.*, MBA *Melb.*, FCPA, MAICD

PRO VICE CHANCELLOR (REGIONAL DEVELOPMENT)

- Professor Kateryna Longley, BA(Hons) *LaTrobe*, DipEd *LaTrobe*, MA *Sus.*, PhD *Melb.*

UNIVERSITY SECRETARY

- Mr Andrew Bain, BA (Hons) *ANU*

senate

as at 31 December 2003

MEMBERS EX OFFICIO

- **The Chancellor**
Emeritus Professor Geoffrey Bolton, AO, CitWA, MA *W. Aust.*, DPhil *Oxf.*, PhD *W. Aust.*, HonDLitt *Murd.*, HonDUniv *Murd.*, FRHistS, FAHA, FASSA, FRSA (term expires 24/11/2006)
- **The Vice-Chancellor**
Professor John Yovich, BSc *Murd.*, BVMS(Hons) *Murd.*, DipLargeAnimalSurg *Guelph*, MS *ColoradoState*, PhD *ColoradoState*, Diplomate ACVS
- **Nominee of the Director-General, Department of Education**
Ms Margaret Banks, AIT *W.Aust.I.T.*, TeachCert *STC*, GradDipSocSc *W.Aust.I.T.*
- **The President of the Guild of Students**
Mr Mal Bradley (term expires 29/11/2004)

MEMBERS APPOINTED BY THE GOVERNOR

- Ms Alison Gaines, BA(Hons) *W.Aust.*, MA *Murd.* (term expires 28/06/2005)
- Mr John Gillam, BCom *W.Aust.*, CA (Aust), FAIM (term expires 10/9/2006)
- Dr Michael McCall, AM MB, BSc *Adel.*, DPhil *Oxf.*, FRACP (term expires 18/05/2005)
- Mr Malcolm Macpherson, CertAcc *TAFE*, BSc *Cant.*, FAusIMM, FAICD, FTSE (term expires 10/09/2006)
- Judge Kate O'Brien, Pro Chancellor LLB *W.Aust.*, BJuris *W.Aust.*, [Pro Chancellor] (term expires 15/05/2006)

MEMBERS ELECTED BY THE ACADEMIC STAFF

- Associate Professor Stuart Bradley, BSc *Liv.*, PhD *Liv.* (term expires 10/11/2005)
- Associate Professor Kenneth Harrison, BSc *Melb.*, PhD *Monash* (term expires 1/08/2004)
- Dr Jim MacBeth, BCom *Br.Col.*, MA *Leeds*, PhD *Murd.* (term expires 28/10/2004)
- Associate Professor Nick Costa BAgSc(Hons) *Adel.*, PhD *Adel.* (term expires 25 September 2006)

MEMBER ELECTED BY NON-ACADEMIC STAFF

- Ms Pat Allen, BA *Durh.* (20/4/2005)

MEMBERS ELECTED BY AND FROM AMONGST THE STUDENTS

- Mr Mat Menzel (term expires 31/12/2004)
- Ms Alisha Ryans-Taylor (term expires 31/12/2004)

MEMBER APPOINTED BY THE GOVERNOR UPON THE NOMINATION OF THE PREMIER

- Dr Sally Cawley, BA *W.Aust.*, PhD *NSW*, TeachCert *Claremont Tech. C.* (term expires 31/05/2004)

MEMBER APPOINTED BY THE GOVERNOR UPON THE NOMINATION OF THE LEADER OF THE OPPOSITION

- Mr Jeremy Buxton MA *W.Aust.* (Until 22/8/2003)

MEMBERS ELECTED BY CONVOCATION

- Ms Janice Bowra BSc *Murd.*, MBA *Murd.*, MAIOH (term expires 31/12/2006)
- Ms Carolyn Jakobsen BA *Murd.*, BA(Hons) *Murd.* (term expires 31/12/2006)
- Dr Melanie Strawbridge BSc(Hons) *Murd.*, PhD *Murd.* (term expires 5/04/2005)

MEMBERS CO-OPTED BY THE SENATE

- Mr Richard Lester (term expires 22/05/2006)
- Mr Robert Pett BA, MA (Econ) *Qu.* (term expires 31/12/2005)
- The Rt Hon. Sir William Heseltine, GCB, GCVO, AC, QSO, BA *W. Aust.*, Hon DUniv *Murd.* (term expires 24/7/2006)
- Prof Malcolm Richmond BSc, BCom *UNSW* FAIM (term expired 3/4/2003)

AUDITOR **GENERAL**

INDEPENDENT AUDIT OPINION

TO THE PARLIAMENT OF WESTERN AUSTRALIA

**MURDOCH UNIVERSITY
PERFORMANCE INDICATORS FOR
THE YEAR ENDED DECEMBER 31, 2003**

AUDIT OPINION

In my opinion, the key effectiveness and efficiency performance indicators of Murdoch University are relevant and appropriate to help users assess the University's performance and fairly represent the indicated performance for the year ended December 31, 2003.

SCOPE

The University Senate's Role

The University Senate is responsible for developing and maintaining proper records and systems for preparing performance indicators.
The performance indicators consist of key indicators of effectiveness and efficiency.

Summary of my Role

As required by the Financial Administration and Audit Act 1985, I have independently audited the performance indicators to express an opinion on them. This was done by looking at a sample of the evidence.

An audit does not guarantee that every amount and disclosure in the performance indicators is error free, nor does it examine all evidence and every transaction. However, my audit procedures should identify errors or omissions significant enough to adversely affect the decisions of users of the performance indicators.



D D R PEARSON

AUDITOR GENERAL

MAY 2, 2004

4th Floor Dumas House 2 Havelock Street West Perth 6005 Western Australia
Tel: 08 9222 7500 Fax: 08 9322 5664

key performance indicators

INTRODUCTION

In 2003, the University launched its new Strategic Plan 2003-2007.

This plan expands and enforces the directions established by the University Senate. The key performance indicators support

the two key goals of teaching and learning, and research. Regional engagement is a third goal which provides further focus of the key goals. The management goal supports these three goals. Where possible these are reported for five years.

Murdoch University's Mission

To extend knowledge, stimulate learning and promote understanding for the benefit of the community.

SUMMARY OF INDICATORS

TEACHING QUALITY AND GRADUATE OUTCOMES

Effectiveness Indicators

- i) Perceived quality of teaching - Course Experience Questionnaire
- ii) Student evaluation of teaching
- iii) Student progress rate
- iv) Course completion rate
- v) Graduate employment outcomes
- vi) Graduate study outcomes

Efficiency Indicators

- vii) Ratios of total operating and teaching related expenditure to total load (EFTSU), a State comparison.
- viii) Ratios of EFTSU per teaching staff FTE, successful EFTSU per teaching staff FTE, and the percentage successful load of total load.

RESEARCH QUALITY AND OUTCOMES

Effectiveness Indicators

- ix) Research funding: a national comparison
- x) Research income: total and per 10 research staff FTE
- xi) Higher degree by research completions per 10 research staff FTE

Efficiency Indicators

- xii) Time to completion of higher degree by research students

TEACHING QUALITY AND GRADUATE OUTCOMES

GOAL:

To provide quality contemporary education which empowers the students of today to live and work in the world of tomorrow.

DESIRED OUTCOMES:

- To maintain student satisfaction with the quality of teaching within the top 20 per cent of the Australian public universities, as measured by the Course Experience Questionnaire (that is to retain our five-star teaching rating).
- To maintain the rate of student satisfaction with the quality of teaching above 80 per cent, as measured by unit surveys.
- To offer courses of the highest quality which ensure students can achieve their full academic potential.
- To increase the percentage of graduates who demonstrate their commitment to lifelong learning by undertaking further study.
- To increase the percentage of graduates who are able to gain their preferred employment to within 2 per cent of the State average.

EFFECTIVENESS INDICATORS

Quality of Teaching

The University's goal to provide quality contemporary education is demonstrated by the students' perceptions of the quality of the teaching. This is measured by the students' responses to the Course Experience Questionnaire and the students' evaluation of units routinely conducted by the University.

i) Perceived Quality of Teaching - Course Experience Questionnaire

The University participates in the annual national Course Experience Questionnaire conducted by the Graduate Careers Council of Australia (GCCA). The survey is administered to all graduates six months after the completion of their course with the year noted being the year of completion.

The survey has changed and now includes only two core scales and one overall satisfaction item. The survey asks all graduates to rate their perceptions to twelve questions which cover two broad aspects of their recently completed course. These aspects are: the quality of teaching and the enhancement of their generic skills. Students are also asked to rate their overall level of satisfaction with the course. The scale is a five-point scale, with 5 being strongly agree and 1 being strongly disagree. Students who record scores of 3, 4 and 5 are defined as broadly agreeing with the statements. National, State and University data are given for the most recent four years. *Murdoch University has maintained student satisfaction with the quality of teaching within the top 20 per cent of the Australian public universities.*

	1999			2000			2001			2002		
	Percent Broadly Agree			Percent Broadly Agree			Percent Broadly Agree			Percent Broadly Agree		
CEQ Scale	Murdoch	WA	National	Murdoch	WA	National	Murdoch	WA	National	Murdoch	WA	National
Good Teaching	84.7	80.6	78.5	84.8	80.3	78.4	86.8	82.7	80.1	87.9	84.1	81.3
Generic Skills	87.3	87.5	86.4	88.3	87.6	86.5	90.2	89.7	87.5	90.9	90.3	88.1
Overall Satisfaction	92.1	90.6	89.5	93.0	89.5	89.4	93.3	90.9	89.4	92.4	90.9	89.6
Number of Respondents	1,284	8,392	90,585	1,332	8,049	90,889	1,296	8,309	95,959	1,257	10,717	107,183
Estimated response rate	58%	55%	58%	56%	53%	57%	55%	54%	55%	51%	54%	57%

ii) Student Evaluation of Teaching

The University conducted student evaluation surveys on each unit each time it was run until Semester 2 2001, provided there were more than ten enrolled students. From Semester 2 2001 the surveys are conducted on 50 per cent of the units offered each semester, with the policy regarding the minimum number of students remaining the same. The survey asks students to rate their perception to a series of statements which cover the three aspects of the unit of study: overall quality of teaching, resources to support teaching and units organisation. Questions relate to the University's Key Quality Standards for units. Students are also asked to rate their perception of overall satisfaction with the quality of the unit.

This indicator is based on the students' response to the statement: "Overall I was satisfied with the quality of the unit" and is expressed as a percentage of the responses. The sample error rates is +/- 0.3%. The University continues to maintain the rate of student satisfaction with the quality of teaching above 80 per cent.

	1999	2000	2001	2002	2003
Agreed or Strongly Agreed	84%	86%	85%	86%	85%
Response rate	58%	60%	62%	60%	59%

Student Learning and Achievement

The University's desired outcome to offer courses of the highest quality which ensure students can achieve their full academic potential is demonstrated by student progress and completion rate indicators for undergraduate students. The University does not prescribe pass rates or set targets, but monitors students' results over time within and between disciplines.

iii) Student Progress Rate

This is an indicator of student learning and achievement. It compares the proportion of student load achieving a passing result to the total enrolled load. Load is generated by the number of credit points in which a student is enrolled as a proportion of twenty-four points. Twenty-four points represents a full-time work load for one year. The load taken by Higher Degrees by Research students has been excluded from the calculation, because it is not finally assessed on a semester or annual basis.

The data for this indicator are extracted from the Murdoch University submissions for Commonwealth Student Data Collections.

The results shown are the percentage of the enrolled load that successfully completed. The reverse of the result includes the percentage that failed or withdrew after the Census Date without academic penalty. The Census Date is used for Federal Government statistical and other collection purposes.

Broad Field of Education	1999	2000	2001	2002	2003
Agriculture, Environmental and Related Studies	84%	85%	85%	81%	83%
Creative Arts	87%	85%	88%	87%	86%
Education	86%	89%	88%	89%	90%
Engineering and Related Technologies	78%	76%	77%	81%	73%
Health	97%	97%	97%	82%	95%
Information Technology	80%	80%	81%	74%	76%
Management and Commerce	88%	87%	87%	84%	84%
Natural and Physical Sciences	84%	84%	83%	82%	82%
Society and Culture	94%	83%	84%	84%	85%
Non-Award	85%	91%	89%	93%	88%
Total	86%	85%	86%	84%	85%

iv) Course Completion Rate

This is an indicator of student learning and achievement. This indicator measures the rate at which Murdoch students successfully complete their course. The data for this indicator are extracted from the Commonwealth Student Data Collections.

The data consist of full time internal students undertaking a three-year bachelor degree and are presented by broad field of education.

Broad Field of Education	1998 - 1999	1999 - 2000	2000 - 2001	2001 - 2002	2002 - 2003
Agriculture, Environmental and Related Studies	0.81	0.70	0.83	0.79	0.75
Creative Arts	0.73	0.77	0.73	0.75	0.75
Engineering and Related Technologies	0.60	0.67	0.68	0.92	0.62
Information Technology	0.64	0.74	0.73	0.81	0.68
Management and Commerce	0.76	0.77	0.79	0.70	0.73
Natural and Physical Sciences	0.69	0.72	0.73	0.73	0.68
Society and Culture	0.67	0.60	0.64	0.74	0.70
Total	0.72	0.72	0.73	0.74	0.71

QUALITY OF GRADUATES

The University has two desired outcomes in relation to the quality of graduates: to increase the percentage of graduates who demonstrate their commitment to lifelong learning by undertaking further study, and to increase the percentage of graduates who are able to gain their preferred employment to within 2 per cent of the State average. The progress towards these is demonstrated through the Employment and Study Destination Survey results below.

Employment and Study Destination Survey

The University participates in the annual national Graduate Destination Survey conducted by the Graduate Careers Council of Australia (GCCA). The survey is administered to all graduates after the completion of their course. The University supplemented the 2000 further study survey results with internal information from the student records system.

The survey asks students about their employment and study status as at 30 April the year succeeding their course completion. Mid year graduates have the census date of 30 October.

This measures the successful outcomes in terms of a graduate being employed and/or studying. Graduates may be both working and studying. The percentage of graduates in their work mode of choice are those who are either employed full or part time and not seeking the alternate mode compared with graduates who want or have paid work at the time of the survey.

v) Graduate Employment Outcomes

		Full Time Employment	Part Time Employment	Unavailable for Employment	Unemployed	Total % in Employment	% Graduates in their work mode of choice
1998	Murdoch	56.3%	17.3%	4.2%	9.3%	73.6%	76.5%
	WA	53.7%	15.0%	4.0%	7.5%	68.7%	80.1%
	National	56.4%	13.4%	4.9%	5.9%	69.8%	83.8%
1999	Murdoch	52.9%	15.7%	4.8%	8.9%	68.6%	77.9%
	WA	53.6%	13.3%	4.3%	6.4%	66.9%	82.3%
	National	58.4%	12.0%	4.7%	4.9%	70.4%	86.2%
2000	Murdoch	55.0%	15.3%	4.1%	8.2%	70.3%	79.2%
	WA	56.7%	15.1%	2.8%	6.0%	71.8%	83.5%
	National	58.9%	12.2%	3.3%	5.2%	71.1%	85.8%
2001	Murdoch	44.7%	15.9%	6.1%	9.4%	60.6%	73.4%
	WA	50.8%	12.4%	5.1%	7.5%	63.2%	80.2%
	National	55.6%	12.9%	4.2%	5.9%	68.5%	83.6%
2002	Murdoch	49.0%	15.8%	3.0%	10.6%	64.8%	73.3%
	WA	53.1%	13.8%	3.9%	7.8%	66.9%	79.1%
	National	55.8%	13.0%	4.5%	6.4%	68.9%	82.3%

Murdoch has increased the percentage of graduates who are able to gain their preferred employment relative to the State average, but not to within 2 per cent. This target was introduced in 2003, so activities implemented to address the performance will not have affected these results. The University's course mix, mature age student mix and the timing of the survey contribute to this result. Currently activities to improve this outcome include the development of courses of study that have better graduate outcomes, a greater emphasis on employer focus groups in a coordinated curriculum review program begun during 2003 and a coordinated effort to provide an articulated interpretation of graduate outcomes for each course of study. These changes are intended to provide appropriate employer groups with an understanding of our graduates and knowledge of our curricula.

vi) Graduate Study Outcomes

		Full Time Study	Part time Study	Not Studying	Total % Studying	Number of Respondents	Number Surveyed	Response Rate
1998	Murdoch	12.9%	11.2%	75.9%	24.1%	1,327	1,998	66.4%
	WA	19.7%				8,760	14,455	60.6%
	National	19.4%				95,022	150,829	63.0%
1999	Murdoch	17.8%	11.1%	71.1%	28.9%	1,283	2,212	58.0%
	WA	22.4%				8,217	14,832	55.4%
	National	20.0%				90,056	155,269	58.0%
2000	Murdoch	17.6%	11.9%	70.5%	29.5%	1,332	2,391	55.7%
	WA	19.4%				7,849	14,950	52.5%
	National	20.4%				90,410	157,235	57.5%
2001	Murdoch	23.8%	12.4%	63.8%	36.2%	1,292	2,345	55.1%
	WA	24.3%				8,238	15,344	53.7%
	National	21.3%				95,626	172,613	55.4%
2002*	Murdoch	21.6%	7.6%	70.8%	29.2%	1,257	2,441	51.5%
	WA	21.5%				10,717	19,867	53.9%
	National	20.0%				107,398	188,039	57.1%

* This analysis uses preliminary data. The final number of respondents provided by the GCCA varies less than 1 per cent and no further detail is available. The analysis is therefore deemed to be final.

The percentage of Murdoch graduates who demonstrate their commitment to lifelong learning by undertaking further study is on an upward trend.

EFFICIENCY INDICATORS

The University's aim is to achieve Murdoch University's strategic objectives by providing effective leadership and applying our human, financial and physical resources in a planned and accountable fashion. The teaching and learning target is to achieve ratios of total operating and teaching related expenditure to total load (EFTSU) equal to the state average.

vii) Ratios of total operating and teaching related expenditure to total load (EFTSU), a State comparison

This indicator includes teaching and research training load and the expenditure associated with that load. Comparable figures are provided for the four publicly funded universities for five years. An EFTSU is an effective full-time student unit. This unit of measure allows for the fact that not all students are studying full-time at the University. Total expenditure includes general research expenditure and has been included because of the important role research plays in informing teaching. Teaching expenditure relates to the provision of teaching and related services to all students and has been identified as total University expenditure less research grant expenditure. The University of Western Australia's expenditure excludes that associated with the Perth Festival of the Arts. Total load is a sum of all units being undertaken by students.

The average expenditure per EFTSU is dependent on and will vary according to the discipline mix taught by the university. Clinical sciences and laboratory based sciences are more expensive to teach than classroom based disciplines.

The data for this indicator are extracted from the Commonwealth Student and Finance Collections, the other universities' annual reports and Murdoch University's Financial Records, as a consequence the comparative data will be reported one year in arrears. The total load figure is as at 31 August. The comparative expenditure figures have been indexed to 2003 prices.

	University	Total Load	Teaching Related Expenditure (\$000)	Teaching Related Expenditure/ Total Load
1999	Curtin	18,592	247,652	\$13,320
	Edith Cowan	14,217	175,806	\$12,366
	Murdoch	8,606	116,342	\$13,519
	Western Australia	12,347	245,361	\$19,872
	Average			\$14,770
2000	Curtin	18,546	280,663	\$15,133
	Edith Cowan	14,438	167,183	\$11,580
	Murdoch	8,977	120,501	\$13,424
	Western Australia	12,390	255,847	\$20,649
	Average			\$15,197
2001	Curtin	19,709	312,476	\$15,854
	Edith Cowan	14,886	172,342	\$11,577
	Murdoch	9,007	137,155	\$15,228
	Western Australia	12,846	268,732	\$20,920
	Average			\$15,895
2002	Curtin	20,886	310,763	\$14,879
	Edith Cowan	15,445	177,581	\$11,497
	Murdoch	9,012	136,763	\$15,175
	Western Australia	12,959	281,288	\$21,706
	Average			\$15,814

Murdoch University's data for 2003 is provided below for information.

2003	Murdoch	9,159	137,501	\$15,013
------	---------	-------	---------	----------

viii) Ratios of EFTSU per teaching staff FTE, successful EFTSU per teaching staff FTE, and the percentage successful load of total load

A Staff FTE is an equivalent full time staff. EFTSU is an effective full-time student unit. These units of measure allow for the fact that not all staff and students are full-time at the University. Academic staff may be classified as 'Teaching Only', 'Teaching and Research', 'Research Only' or 'Other'. The Commonwealth defines these measures and classifications for the universities. Only academic staff associated with Academic Organisational Units and designated as 'Teaching Only' or 'Teaching and Research' have been included in this indicator. Successful load is the sum of all load with a passing result. Total load is a sum of load being undertaken by coursework students. The research load has been excluded from this calculation.

The data for this indicator are extracted from the Commonwealth Student and Staff Data Collections. The load figures are as at 31 August.

	1999	2000	2001	2002	2003
Total Non-Research Load (EFTSU)	8,128	8,473	8,559	8,501	8,597
Successful Load (EFTSU)	6,978	7,222	7,361	7,125	7,313
Teaching Staff (FTE)	417	442	459	461	475
Total Load / Teaching Staff	19.5	19.2	18.6	18.4	18.1
Successful Load / Teaching Staff	16.7	16.3	16.0	15.5	15.4
Percent Successful Load of Total Load	86%	85%	86%	84%	85%

RESEARCH QUALITY AND OUTCOMES

GOAL:

To contribute to the knowledge, wellbeing and sustainability of society by conducting high quality multidisciplinary research and development.

DESIRED OUTCOMES:

- To increase research productivity as measured by the Research Funding allocation and rank.
- To increase research income per 10 Research Staff FTE.
- To increase the number of postgraduate research student completions per 10 Staff FTE.

EFFECTIVENESS INDICATORS

The University presents four performance indicators to demonstrate how well it is working to achieve its desired outcomes. The desired outcome to increase research productivity as measured by the Research Funding allocation and rank demonstrates the University's national standing in terms of research productivity. Research income is an indicator of a productive research culture and the ability of the University to increase its external funding base for research. Student completions are an indicator of the quality of the students and their supervision.

ix) Research Funding: A National Comparison

Research Funding is a combination of the Research Training Scheme (RTS) and Institutional Grants Scheme (IGS) funds provided by the Commonwealth. It is a key indicator of research performance because this funding is allocated according to the comparative research performance of all Commonwealth funded universities. Each funding scheme has its own composite index of research outputs and inputs. The components and combined indices are higher degrees by research completions (33 per cent) and student load (10 per cent), research income (47 per cent), and publications (10 per cent). The figures are published in the Department of Education Science and Training annual Higher Education triennial reports. These are weighted and averaged, except for student load, over the two most recent years for which data are available. Student load is the figure for the most recent year.

The Research Funding Indicator is tabulated and all publicly funded Australian universities ranked according to their share of the total Research Training Scheme and Institutional Grants Scheme funds. This is the third year of this funding scheme and the last year to which the 5 per cent cap will apply to changes. Universities denoted with an (R) are receiving a "top-up" from the Regional Protection Fund. Universities denoted with an (M) have medical schools and supporting departments. These universities have had the advantage of enhanced access to National Competitive Grants schemes such as the National Health and Medical Research Council. Western Australian universities are bolded. Murdoch University does not have a medical school and ranks 10 among other universities in that category. In the overall ranking Murdoch is 20.

Research Funding Allocations 2001 – 2004

	Rank	Rank	Rank	Rank	IGS & RTS \$ Allocation
	2001	2002	2003	2004	2004
The University of Sydney (M)	2	2	1	1	85,894,286
The University of Melbourne (M)	1	1	2	2	85,167,857
The University of Queensland (M)	3	3	3	3	81,044,070
The University of New South Wales (M)	4	4	4	4	66,131,067
Monash University (M)	5	5	5	5	58,131,363
The University of Adelaide (M)	7	7	7	6	45,111,853
The University of Western Australia (M)	6	6	6	7	44,380,833
The Australian National University	8	8	8	8	39,978,774
University of Tasmania (M)	11	9	9	9	23,296,935
La Trobe University (R)	10	10	10	10	19,622,396
The University of Newcastle (R) (M)	9	11	11	11	19,242,982
University of Wollongong	14	13	12	12	18,871,726
Griffith University	15	15	15	13	18,475,449
Macquarie University	12	12	13	14	18,248,314
The Flinders University of South Australia (M)	13	14	14	15	18,056,853
Royal Melbourne Institute of Technology	16	16	16	16	17,006,980
Curtin University of Technology	19	17	17	17	16,965,549
Queensland University of Technology	17	18	18	18	14,790,326
University of Technology, Sydney	18	19	19	19	13,965,333
Murdoch University	21	21	20	20	13,394,077
James Cook University (R) (M)	20	22	22	21	12,500,071
The University of New England	22	20	21	22	12,421,992
University of South Australia	23	23	23	23	11,923,443
University of Western Sydney	24	24	24	24	11,717,813
Deakin University	25	25	25	25	11,201,357
Victoria University#	27	27	26	26	7,260,219
Swinburne University of Technology	26	26	27	27	6,822,062
Edith Cowan University	28	28	28	28	5,471,885
University of Canberra	29	29	29	29	4,516,547
Charles Sturt University (R)	30	30	30	30	4,360,639
Southern Cross University (R)	31	32	31	31	4,078,971
Central Queensland University	32	31	32	32	3,842,041
Charles Darwin University*	33	33	33	33	3,465,015
University of Southern Queensland	34	34	34	34	3,202,028
Australian Catholic University	36	36	36	35	1,561,983
University of Ballarat	35	35	35	36	1,559,713
University of the Sunshine Coast	38	38	37	37	704,759
Australian Maritime College	37	37	38	38	429,259
Melbourne College of Divinity	-	39	39	39	253,300
The University of Notre Dame Australia	39	40	40	40	237,106
Bond University	40	41	41	41	92,809
Batchelor Institute of Indigenous Tertiary Education	-	42	42	42	10,965
Total					825,411,000

* Formerly Northern Territory University

Formerly Victoria University of Technology

- Not reported in given year

(R) Regional Protection Fund "top-up"

(M) Medical School and supporting departments

The most significant component in the formula used to determine Research Training Scheme and Institutional Grant Scheme funds from the Commonwealth is research income (47 per cent). The University has targeted this component for improved performance. The following indicators present the research income total and per 10 staff FTE and the amount of funding received from the Rockingham-Kwinana and Peel Region which has become the region of focus for development.

x) Research Income: Total and per 10 Research Staff FTE

A Staff FTE is an equivalent full time academic staff member. This unit of measure allows for the fact that not all staff are working full-time at the University. Academic staff may be classified as 'Teaching Only', 'Teaching and Research', 'Research Only' or 'Other'. The Commonwealth defines these measures and classifications for the universities. Only academic staff associated with Academic Organisational Units and designated as 'Research Only' or 'Teaching and Research' have been included in this indicator. These staff have been included because they are employed to undertake research. A rolling three year staff average has been used.

The data for this indicator are extracted from the Commonwealth Staff Data Collections, the Commonwealth funding statements and the University's Financial Records. The target is to increase research income to \$40 million by 2007. The University's external research income has increased over the last five years.

	1999 Actual	2000 Actual	2001 Actual	2002 Actual	2003 Actual
Research Income (\$000's)	15,043	19,615	19,863	22,167	25,929
Research Staff (FTE)	322	329	339	351	362
Research Income per 10 Staff FTE	\$467,765	\$596,215	\$585,937	\$631,822	\$716,271

xi) Higher Degree by Research Completions per 10 Research Staff FTE

The University has a desired outcome to increase the number of Higher Degrees by Research completions per 10 full-time equivalent (FTE) research staff. The Commonwealth defines research staff FTE for all universities. Only academic staff associated with Academic Organisational Units and classified as 'Research and Teaching' or 'Research Only', Lecturer B and above have been included in the calculation. All academic staff classified as 'Other' or 'Teaching Only', 'Research and Teaching' or 'Research Only' who are below Lecturer B have been excluded. These have been excluded because these staff are not employed to supervise postgraduate research students. A rolling three year staff average has been used. The actual number of research students is provided in the summary statistics section of the Annual Report.

The data for this indicator are extracted from the Commonwealth Student and Staff Data Collections. Due to the unresolved status of research students results at the time the Annual Report is prepared this indicator will be one year in arrears.

Degree Type	1998	1999	2000	2001	2002
Research Staff (FTE)	312	322	329	339	351
Masters by Research Completions	14	3	6	11	5
Doctorate by Research Completions	64	66	58	77	90
Masters Completions per 10 Staff	0.4	0.1	0.2	0.3	0.1
Doctorate Completions per 10 Staff	2.1	2.0	1.8	2.3	2.6
Total Completions per 10 Staff	2.5	2.1	1.9	2.6	2.7

EFFICIENCY INDICATORS

Student Progress and Completions

xii) Time to completion of Higher Degree by Research Students

The second most significant component in the formula used to determine Research Training Scheme and Institutional Grant Scheme funds from the Commonwealth is higher degree by research student completions (33%). The University has targeted completions for improved performance. Students admitted to Higher Degrees are deemed to have the ability to complete at the point of selection, therefore this indicator demonstrates the efficiency of the student under the supervision of the University's staff. There are two definitions of time. For students enrolled prior to 2001 time is defined by the Commonwealth for Master of Philosophy students as three years and for Doctor of Philosophy as five years, and for those enrolled in 2001 and onwards it will be defined as two years and 4 years respectively. The time taken is allocated to the year in which the students completed.

The data for this indicator are extracted from the Commonwealth Student Data Collections and supplemented by the University's student records. The figures for 2002 are preliminary due to the unresolved student completion details. The final figures for 2003 will be reported in the 2004 Annual Report, but are not expected to differ significantly to the preliminary figures shown here.

The time to completion is affected by the number of students studying on a part-time basis and the number of part-time students who completed in the period.

Degree Type	1999	2000	2001	2002	2003
Masters by Research	4 yrs 4 mths	3 yrs 1 mth	2 yrs 4 mths	1 yr 6 mths	1 yr 3 mths
Doctorate by Research	4 yrs 0 mths	4 yrs 0 mths	4 yrs 0 mths	4 yrs 4 mths	4 yrs 1 mth





certification of performance indicators

We hereby certify that the 2003 key performance indicators are based on proper records, are relevant and appropriate for assisting users to assess Murdoch University's performance, and fairly represent the performance of Murdoch University for the year ending 31 December 2003.



G C Bolton

Chancellor



J V Yovich

Vice Chancellor

certificate of compliance

We hereby certify that during the period 1 January 2002 to 31 December 2002 Murdoch University has operated within the provisions of the Murdoch University Act 1973 - 1985 and has also complied with the Financial Administration and Audit Act (1985) and all other relevant written laws.



Geoff Bolton

Chancellor



John Yovich

Vice Chancellor

28 February, 2003

statement of expenditure

Section 175 ZE of the Electoral Act 1907 requires the University to include a statement in the Annual Report setting out details of expenditure incurred by the University and certain classes of organisations.

The expenditure incurred by the University during the 2002 financial year was as follows:

The total amount of the expenditure was \$563,646.

The classes of organisation, the names of the organisations within the class and the total expenditure for the class was as follows:

Agencies and organizations are not named where the expenditure was less than \$2,000 for the year, but the expenditure has been included in the total figure.

(a) Advertising Agencies \$2,640

Wildmoon Marketing and Strategic Communication

(b) Direct Mail Organisations \$69,777

Lasermail Pty Ltd

(c) Media Advertising Organisations \$491,229

Ad Vision Advertising Pty Ltd

Community Newspapers Group Ltd

KHK Advertising Sdn Bhd

Media Decisions WA

Nexus Asatsu Advertising Pty Ltd

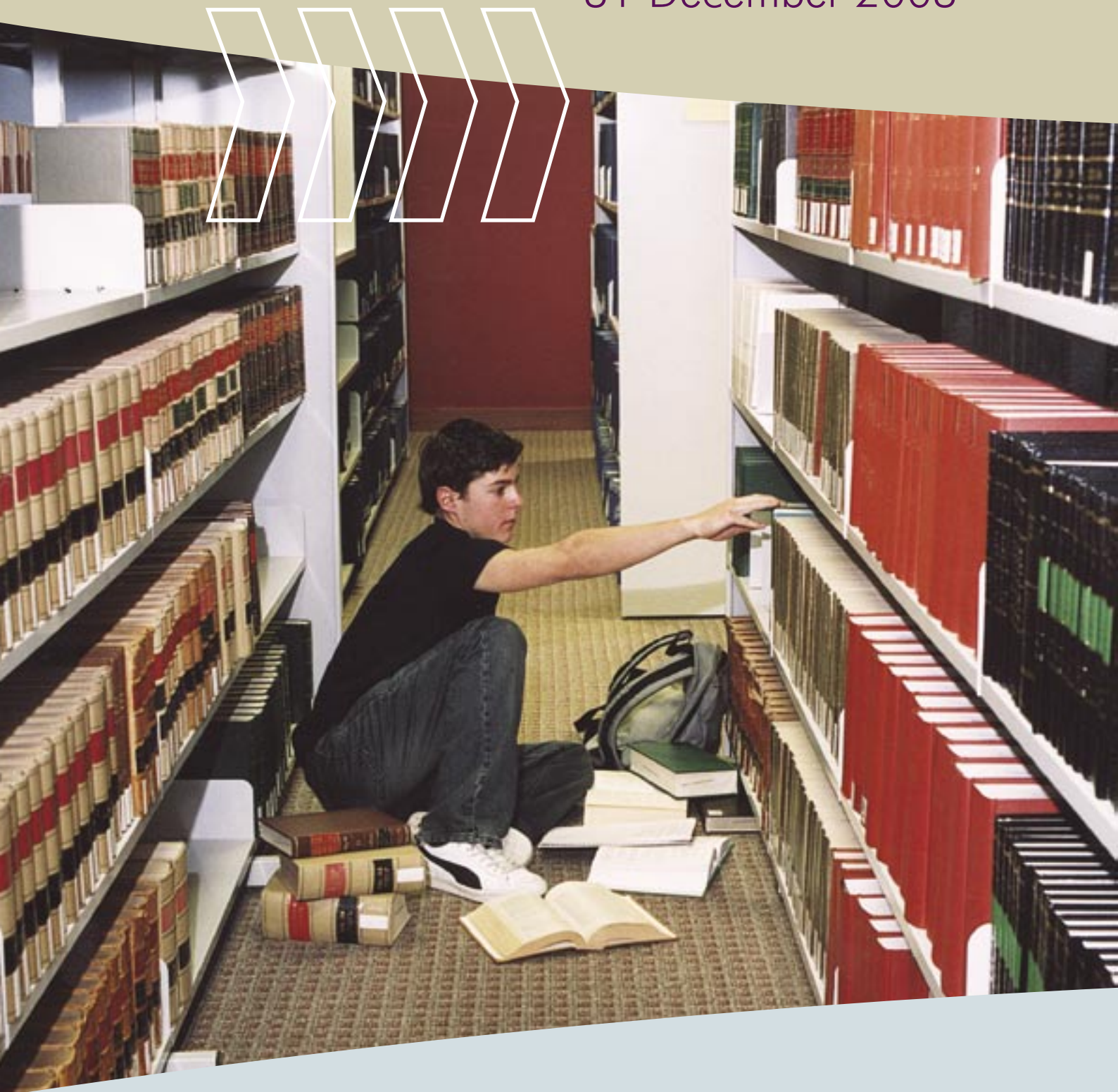
Price Advertising

West Australian Newspapers Ltd

murdoch university

financial statements

for the year ended
31 December 2003





certification of financial statements

The accompanying financial statements of Murdoch University and the accompanying consolidated financial statements have been prepared in compliance with the provisions of the Financial Administration and Audit Act 1985 from proper accounts and records to present fairly the financial transactions for the year ending 31 December 2003 and the financial position as at 31 December 2003.

At the date of signing we are not aware of any circumstance that would render the particulars included in the financial statements misleading or inaccurate.



G C Bolton
Chancellor



J V Yovich
Vice Chancellor



G M McMath
Principal Accounting Officer

27 FEBRUARY 2004

AUDITOR **GENERAL**

INDEPENDENT AUDIT OPINION

TO THE PARLIAMENT OF WESTERN AUSTRALIA

MURDOCH UNIVERSITY FINANCIAL STATEMENTS FOR THE YEAR ENDED DECEMBER 31, 2003

AUDIT OPINION

In my opinion,

- (i) the controls exercised by Murdoch University provide reasonable assurance that the receipt, expenditure and investment of moneys, the acquisition and disposal of property, and the incurring of liabilities have been in accordance with legislative provisions; and
- (ii) the financial statements are based on proper accounts and present fairly in accordance with applicable Accounting Standards and other mandatory professional reporting requirements in Australia, the financial position of the University and the consolidated entity at December 31, 2003 and their financial performance and cash flows for the year ended on that date.

SCOPE

The University Senate's Role

The University Senate is responsible for keeping proper accounts and maintaining adequate systems of internal control, preparing the financial statements, and complying with the Financial Administration and Audit Act 1985 (the Act) and other relevant written law.

The financial statements consist of the Statement of Financial Performance, Statement of Financial Position, Statement of Cash Flows of the University and the consolidated entity and the Notes to the Financial Statements.

Summary of my Role

As required by the Act, I have independently audited the accounts and financial statements to express an opinion on the controls and financial statements. This was done by looking at a sample of the evidence.

An audit does not guarantee that every amount and disclosure in the financial statements is error free. The term "reasonable assurance" recognises that an audit does not examine all evidence and every transaction. However, my audit procedures should identify errors or omissions significant enough to adversely affect the decisions of users of the financial statements.



D D R PEARSON

AUDITOR GENERAL

MARCH 30, 2004

4th Floor Dumas House 2 Havelock Street West Perth 6005 Western Australia

Tel: 08 9222 7500 Fax: 08 9322 5664

STATEMENT OF FINANCIAL PERFORMANCE*For the year ended 31 December 2003*

	Note	Consolidated		University	
		2003	2002	2003	2002
		\$000's	\$000's	\$000's	\$000's
Revenues from Ordinary Activities					
Commonwealth Government Financial Assistance	2	66,751	63,482	66,751	63,482
Higher Education Contribution Scheme (HECS)	3	28,076	27,601	28,076	27,601
PELS and BOTPLS	4	1,887	675	1,887	675
Fees and Charges	5	29,429	29,104	29,429	29,104
Western Australian Government Grants	6	3,124	2,584	3,124	2,584
Other Research Grants and Contracts	7	18,942	17,014	18,942	17,033
Trading Income	8	5,554	4,717	5,554	4,717
Investment Income	9	1,317	1,156	1,259	1,049
Donations and Bequests	10	1,482	798	1,482	5,897
Student and Amenities Fees	19	1,124	-	1,124	-
Other Revenue	11	14,942	12,031	4,248	3,865
Total Revenue from Ordinary Activities		172,628	159,162	161,876	156,007
Expenses from Ordinary Activities					
Employee Benefits	12	93,251	90,327	93,244	90,236
Scholarships, Grants and Prizes	13	5,803	5,774	5,803	5,774
Materials and Supplies	14	41,924	31,114	41,163	31,133
Buildings and Grounds	15	2,195	5,709	2,195	5,451
Depreciation and Amortisation	16	10,066	10,652	10,060	10,652
Bad and Doubtful Debts	17	605	207	605	188
Student and Amenities Fees	19	1,057	-	1,057	-
Other Expenses	18	9,089	11,051	8,901	11,025
Total Expenses from Ordinary Activities		163,990	154,834	163,028	154,459
Profit/(Loss) from Ordinary Activities before income tax		8,638	4,328	(1,152)	1,548
Income Tax		4,250	-	-	-
Profit/(Loss) from Ordinary Activities after income tax		4,388	4,328	(1,152)	1,548
Net Increase/(Decrease) in Reserves		(15,240)	32	(15,240)	(148)
Total changes in Equity other than those directly resulting from transactions with owners as owners		(10,852)	4,360	(16,392)	1,400

The Statement of Financial Performance should be read in conjunction with the accompanying notes.

MURDOCH UNIVERSITY
STATEMENT OF FINANCIAL POSITION

As at 31 December 2003

	Note	Consolidated		University	
		2003	2002	2003	2002
		\$000's	\$000's	\$000's	\$000's
Current Assets					
Cash Assets	20	22,033	2,540	19,936	2,138
Unrestricted Financial Assets - Investments	21	2,368	17,860	2,368	12,637
Restricted Financial Assets - Investments	21	9,418	9,016	9,418	9,016
Other Financial Assets - Loans	21	169	-	169	-
Receivables	22	8,140	7,644	8,574	7,637
Inventories	23	997	740	997	740
Other Assets	24	1,004	2,055	979	2,041
Total Current Assets		44,129	39,855	42,441	34,209
Non-Current Assets					
Other Financial Assets - Loans	21	1,925	1,447	1,925	1,626
Property, Plant and Equipment	25	297,758	310,938	297,736	310,911
Total Non-Current Assets		299,683	312,385	299,661	312,537
Total Assets		343,812	352,240	342,102	346,746
Current Liabilities					
Payables	26	5,585	4,143	5,523	4,076
Interest Bearing Liabilities	27	6,020	403	16,733	403
Provisions	28	10,958	7,674	9,572	7,666
Grants and Fees in Advance	29	10,170	10,631	9,621	10,278
Total Current Liabilities		32,733	22,851	41,449	22,423
Non-Current Liabilities					
Interest Bearing Liabilities	27	4,351	9,853	4,351	9,853
Provisions	28	2,348	4,191	2,348	4,191
Total Non-Current Liabilities		6,699	14,044	6,699	14,044
Total Liabilities		39,432	36,895	48,148	36,467
Net Assets		304,380	315,345	293,954	310,279
Equity					
Reserves	30	141,263	156,616	141,263	156,436
Retained Profits	31	163,117	158,729	152,691	153,843
Total Equity		304,380	315,345	293,954	310,279

The Statement of Financial Position should be read in conjunction with the accompanying notes.

MURDOCH UNIVERSITY
STATEMENT OF CASH FLOWS
For the year ended 31 December 2003

	Note	Consolidated		University	
		2003	2002	2003	2002
		\$000's	\$000's	\$000's	\$000's
Cash Flows from Operating Activities					
Inflows					
Commonwealth Government financial assistance		65,785	64,726	65,785	64,726
Higher Education Contribution Scheme		28,076	27,712	28,076	27,712
PELS and BOTPLS		1,887	675	1,887	675
Fees and charges		26,986	28,175	26,967	28,175
Donations and bequests		1,578	702	1,578	5,801
Other research grants and contracts		22,997	18,194	23,016	18,120
Interest		1,385	1,055	1,327	948
Trading		5,580	4,763	5,581	4,763
Other		4,965	3,957	4,642	3,605
Controlled entities		(155)	-	-	-
Outflows					
Staff costs		(91,681)	(94,396)	(93,065)	(94,308)
Suppliers		(41,524)	(38,315)	(41,180)	(38,273)
Other		(15,114)	(2,868)	(15,886)	(3,025)
Controlled entities		(1,028)	-	-	-
Tax paid		(4,251)	-	-	-
Net Cash from/(used in) Operating Activities	36	5,486	14,380	8,728	18,919
Cash Flows from Investing Activities					
Inflows					
Proceeds from sale of property, plant and equipment		20	295	20	281
Proceeds from sales Murdoch Retirement Village		10,794	7,869	-	-
Outflows					
Acquisition of property, plant and equipment		(4,201)	(8,891)	(4,013)	(8,868)
Acquisition of buildings - Murdoch Retirement Village		(5,929)	(5,532)	(5,929)	(5,340)
Acquisition of artworks		(293)	(5)	(293)	(5)
Acquisition of library books		(942)	(2,818)	(942)	(2,818)
Net Cash from/(used in) Investing Activities		(551)	(9,082)	(11,157)	(16,750)
Cash Flows from Financing Activities					
Inflows					
Proceeds of borrowings from WATC		500	1,870	500	1,870
Proceeds of borrowings from Murdoch Retirement Services Pty Ltd		-	-	10,726	-
Proceeds of borrowings from other sources		13	-	-	-
Outflows					
Loans made		(647)	(250)	(468)	(250)
Repayments to WATC		(398)	(173)	(398)	(173)
Net Cash from/(used in) Financing Activities		(532)	1,447	10,360	1,447
Net Increase/(Decrease) in Cash Held		4,403	6,745	7,931	3,616
Cash at the Beginning of the Reporting Period		29,416	22,671	23,791	20,175
Cash at the End of the Reporting Period	37	33,819	29,416	31,722	23,791

The Statement of Cash Flows should be read in conjunction with the accompanying notes.

NOTES TO AND FORMING PART OF THE FINANCIAL STATEMENTS

For the year ended 31 December 2003

1. Statement of Accounting Policies

The following accounting policies have been adopted in the preparation of the Murdoch University financial statements. Unless otherwise stated these policies are consistent with those adopted in the preceding year.

(a) General System of Accounting

The financial statements are prepared in accordance with the provisions of the Financial Administration and Audit Act 1985. Additional disclosures have been included in accordance with instructions issued by the Department of Education, Science and Training (DEST), for the preparation of annual financial reports by Australian Higher Education Institutions.

These financial statements constitute a general purpose financial report that is prepared in accordance with Australian Accounting Standards and the Urgent Issues Group (UIG) Consensus Views, as applied by the Treasurer's Instructions. Several of these are modified by the Treasurer's Instructions to vary application, disclosure, format and wording.

The Financial Administration and Audit Act 1985 and the Treasurer's Instructions are legislative provisions governing the preparation of financial statements and take precedence over the Australian Accounting Standards and the UIG Consensus Views. Modifications to the Australian Accounting Standards and UIG Consensus Views are meant to meet the requirements of their general application to the public sector, together with the need for greater disclosure and accountability. If any modification has a material or significant effect on the reported results, details of that modification and where practicable, the resulting financial effect, are disclosed in individual notes to these financial statements.

The accounts have been drawn up on the basis of historical cost principles subject to the exceptions noted in the paragraphs below.

The accrual basis of accounting has been applied.

(b) Principles of Consolidation

The column headed "University" discloses the results of the University operations. The column headed "Consolidated" incorporates the results of controlled entities of the University.

The University Company Pty Ltd, Murdoch Retirement Services Pty Ltd and Paragen Pty Ltd are the only controlled entities of the University that had any financial transactions during the year.

(c) Valuation of Non-Current Assets

The current University policy for valuing land, buildings and artworks is every three years. Fair value has been determined on the basis of current use land value for the Murdoch University campus and market land value for all other land.

Buildings are valued at estimated current replacement cost less accumulated depreciation.

Other fixed assets are presented at historical cost less depreciation where appropriate.

Equipment is capitalised for items costing more than \$1,000 and having a useful life of more than two years up to the year ended 31 December 2000. This threshold was increased to \$5,000 as from 1 January 2001. Equipment purchased prior to the current year and costing less than \$5,000 has been retained on the asset register and depreciation applied.

The valuation for library books is based on acquisition for three years to the end of the current financial year. The University has adopted a "rolling depreciation" methodology for library books, whereby acquisitions in the fourth year preceding the reporting year are charged to depreciation.

NOTES TO AND FORMING PART OF THE FINANCIAL STATEMENTS*For the year ended 31 December 2003***(d) Valuation of Investments**

Investments are stated at historical cost.

The market value of listed shares held by the University at balance date is:

2001	\$10,071
2002	\$10,071
2003	\$10,071

The University holds shares in companies acquired or received in exchange for the University's support of specific operations. The values of these shares are not recorded in the financial statements as the amount is insignificant and the determination of the market value is not reliable.

(e) Depreciation of Non-Current Assets

All non-current assets having a limited useful life are systematically depreciated over their useful lives in a manner that reflects the consumption of their future economic benefits.

Depreciation of Computer and Other Equipment has been calculated on the straight-line method for the current and previous financial year and on the reducing balance basis in previous years. The depreciation rates for the current and previous financial years are:

Computer Equipment – 25 per cent

Other Equipment – 12.5 per cent

For buildings, the average remaining life has been assessed as 50 years.

Depreciation is not calculated on motor vehicles as the University purchases motor vehicles exempt from GST and the proceeds of disposals approximate the purchase price.

Works of art are considered heritage assets and are anticipated to have very long and indeterminate useful lives. Their service potential has not, in any material sense, been consumed during the reporting period. As such, no amount for depreciation has been recognised in respect of works of art.

The basis for depreciation and the depreciation rates are reviewed annually.

Profits and losses from the disposal of fixed assets have been taken into account in determining the profit/loss from operating activities for the financial year.

(f) Inventories

Inventories are valued at the lower of cost or net realisable value with provisions being made for obsolescence where considered necessary.

(g) Reporting Entity - University

Relates to the income and expenditure relevant to the general operating activities of the University. Income is derived principally from Commonwealth Government financial assistance, research grants, interest earned from the investment of funds and overseas full fee-paying students.

(h) Employee Entitlements – Provision for Annual and Long Service Leave

Provision is made for the University liability for employee entitlements arising from services rendered by employees to balance date. Employee entitlements expected to be settled within one year together with salary and wage entitlements are measured at their nominal amount. Other employee entitlements payable later than one year are measured at the present value of future cash flows on a basis consistent with Australian Accounting Standards (AASB1028).

NOTES TO AND FORMING PART OF THE FINANCIAL STATEMENTS

For the year ended 31 December 2003

(i) Employee Entitlements – Superannuation

The following superannuation schemes are operative for University employees with contributions based on a percentage of earnings.

Unisuper Award Advanced - Superannuation Scheme for Australian Universities

University contribution 14% and employee contribution 7%

University contribution 7% and employee contribution 3.5%

Unisuper Award Plus - Superannuation Scheme for Australian Universities

University contribution 8% (January to June) and 9% (July to December) and employee contribution 0%

The University also contributes 3% of earnings for Unisuper Award Advanced to Unisuper Award Plus as part of the industrial award.

(j) Insurance

Insurance cover is effective for all usual commercial risks.

(k) Special Reserves

Special Reserves are created for funds that are retained for expenditure on specified items in future years.

(l) Leased Assets

The University has no assets subject to finance leases.

The University has entered into a number of operating lease arrangements for equipment and motor vehicles. Lessors effectively retain all risks and benefits incidental to ownership of the items held under the operating lease. Equal instalments of the lease payments are charged to the operating statement over the lease term, as this is representative of the pattern of benefits to be derived from the leased property.

Details of operating leases are shown in note 32 to the financial statements.

(m) Current Assets

Trade debtors are initially recorded at the amount of contracted sales proceeds. A provision for doubtful debts is recognised to the extent that recovery of outstanding debts is less than likely.

The HR Education Group in Hong Kong debt of \$2,249,499 was expensed as a doubtful debt during 2001 and the formal approval to write-off the debt was received during the current financial year.

Bank deposits are carried at cost.

(n) Current Liabilities

Creditors are recognised as amounts to be paid in the future for goods and services received, whether or not billed before balance date.

(o) Associated Entities

Murdoch University has a 45% ownership interest in Murdoch College Properties Pty Ltd, a company whose principal activity is to provide the infrastructure on the University's campus for the secondary school operations of Murdoch College (Inc).

Comprehensive Education Centre, a company 100% owned by the Alexander Education Group, holds the remaining 55% ownership interest.

Murdoch University has leased land, on a peppercorn rental basis of \$1 per annum, to Murdoch College Properties Pty Ltd, with a lease term of 50 years. Title to the buildings will revert to Murdoch University upon expiry of the lease.

Details of the associated entity are shown in note 47 to the financial statements.

(p) Comparative Figures

Comparative figures are, where appropriate, reclassified so as to be comparable with the figures presented in the current financial year.

NOTES TO AND FORMING PART OF THE FINANCIAL STATEMENTS*For the year ended 31 December 2003*

Consolidated		University	
2003	2002	2003	2002
\$000's	\$000's	\$000's	\$000's

2. Commonwealth Government Financial Assistance (excluding HECS, PELS and BOTPLS)

Teaching and Learning:

Operating purposes excluding HECS, PELS and BOTPLS	45,684	57,417	45,684	57,417
--	--------	--------	--------	--------

Australian Research Council (ARC):

Discovery - Projects(Large Grants)	1,544	1,280	1,544	1,280
Discovery - Indigenous Researchers Development	31	28	31	28
Linkage - SPIRT	1,982	1,295	1,982	1,295
Linkage - International Researcher Exchange	22	11	22	11
Linkage - Infrastructure	1,041	347	1,041	347

Department of Education Science and Training (DEST):

Institutional Grants Scheme	4,262	-	4,262	-
Research Training Scheme	8,587	-	8,587	-
Infrastructure Block	1,884	1,509	1,884	1,509
Australian Postgraduate Awards	1,345	1,367	1,345	1,367
International Postgraduate Research Scholarships	247	228	247	228
Other - Equity Program	122	-	122	-

Total Commonwealth Government Financial Assistance (excluding HECS, PELS and BOTPLS)

	66,751	63,482	66,751	63,482
--	--------	--------	--------	--------

3. Higher Education Contribution Scheme (HECS)

Higher Education Trust Fund	24,275	23,818	24,275	23,818
Student Contributions	3,801	3,783	3,801	3,783
Total Higher Education Contribution Scheme (HECS)	28,076	27,601	28,076	27,601

4. PELS and BOTPLS

Postgraduate Education Loan Scheme	1,873	675	1,873	675
BOTPostgraduate Loan Scheme	14	-	14	-
Total PELS and BOTPLS	1,887	675	1,887	675

NOTES TO AND FORMING PART OF THE FINANCIAL STATEMENTS*For the year ended 31 December 2003*

	Consolidated		University	
	2003	2002	2003	2002
	\$000's	\$000's	\$000's	\$000's
5. Fees and Charges				
AUSAID Students Trust	133	231	133	231
Continuing Education	75	-	75	-
Fees-approved post graduate students	2,848	2,179	2,848	2,179
Full fee paying students	17,891	16,302	17,891	16,302
Murdoch College Inc.	1,025	1,117	1,025	1,117
Offshore programme fees	1,387	2,149	1,387	2,149
Other fees and Charges	14	21	14	21
Parking	547	574	547	574
Rentals and commissions	625	850	625	850
Student Village	2,019	2,100	2,019	2,100
Divisions, Research Centres and Institutes	2,865	3,581	2,865	3,581
Total Fees and Charges	29,429	29,104	29,429	29,104
6. Western Australian Government Grants				
Research Grants	2,883	2,260	2,883	2,260
Other	241	324	241	324
Total Western Australian Government Grants	3,124	2,584	3,124	2,584
7. Other Research Grants and Contracts				
Commonwealth Government Grants	8,285	8,968	8,285	8,968
Local Government Grants	383	112	383	112
Other	10,274	7,934	10,274	7,953
Total Other Research Grants and Contracts	18,942	17,014	18,942	17,033
8. Trading Income				
The trading income is from the operations of the University Bookshop and Veterinary Hospital				
Sales	8,032	7,638	8,032	7,638
Less Cost of goods sold				
Opening Inventory	740	780	740	780
Purchases	2,736	2,881	2,736	2,881
	3,476	3,661	3,476	3,661
Closing inventory	998	740	998	740
	2,478	2,921	2,478	2,921
Total Trading Income	5,554	4,717	5,554	4,717
9. Investment Income				
Bank Bills and Deposits	1,317	1,156	1,259	1,049
Total Investment Income	1,317	1,156	1,259	1,049

NOTES TO AND FORMING PART OF THE FINANCIAL STATEMENTS*For the year ended 31 December 2003*

	Consolidated		University	
	2003	2002	2003	2002
	\$000's	\$000's	\$000's	\$000's
10. Donations and Bequests				
Assets	276	-	276	-
Law Building	257	303	257	303
Murdoch Retirement Services Pty Ltd	-	-	-	5,099
Other	949	495	949	495
Total Donations and Bequests	1,482	798	1,482	5,897
11. Other Revenue				
Disposals - unregistered assets	39	23	39	23
Insurance claims	10	78	10	78
Murdoch College Properties Pty Ltd	75	63	75	63
Murdoch Retirement Services Pty Ltd	10,534	8,164	-	-
Other Income	37	37	22	35
Service Charges	1,998	1,166	1,998	1,166
Special Reserves	-	-	-	-
Divisions, Research Centres and Institutes	2,249	2,500	2,104	2,500
Total Other Revenue	14,942	12,031	4,248	3,865
12. Employee Benefits				
Academic:				
Salaries	37,102	35,432	37,102	35,432
Superannuation	5,417	5,344	5,417	5,344
Payroll Tax	2,965	2,983	2,965	2,983
Workers' Compensation	244	214	244	214
Leave Expense	(89)	670	(89)	670
Other Employee Benefits	1,975	1,918	1,975	1,918
Total Academic Employee Benefits	47,614	46,561	47,614	46,561
Non-academic:				
Salaries	37,211	35,278	37,204	35,278
Superannuation	4,755	4,496	4,755	4,496
Payroll Tax	2,472	2,383	2,472	2,383
Workers Compensation	234	199	234	199
Leave Expense	152	670	152	670
Other Employee Benefits	813	740	813	649
Total Non-academic Employee Benefits	45,637	43,766	45,630	43,675
Total Employee Benefits	93,251	90,327	93,244	90,236
13. Scholarships, Grants and Prizes				
Scholarships and Studentships	5,803	5,774	5,803	5,774
Total Scholarships, Grants and Prizes	5,803	5,774	5,803	5,774

NOTES TO AND FORMING PART OF THE FINANCIAL STATEMENTS*For the year ended 31 December 2003*

	Consolidated		University	
	2003	2002	2003	2002
	\$000's	\$000's	\$000's	\$000's
14. Materials and Supplies				
Laboratory and Workshop Supplies	2,786	2,960	2,504	2,960
Sponsorships	4,681	678	4,681	678
Travel	3,358	3,919	3,358	3,919
Utilities	2,432	2,501	2,432	2,501
Cleaning	1,115	1,126	1,115	1,126
Other General Consumables and Supplies	27,552	19,930	27,073	19,949
Total Materials and Supplies	41,924	31,114	41,163	31,133
15. Buildings and Grounds				
Properties	1,072	1,240	1,072	1,240
Minor New Works	1,041	4,423	1,041	4,165
Other	82	46	82	46
Total Buildings and Grounds	2,195	5,709	2,195	5,451
16. Depreciation and Amortisation				
Buildings	3,600	3,494	3,600	3,494
Computer Equipment	1,482	2,467	1,482	2,467
Other Equipment	2,738	2,977	2,732	2,977
Library Books	2,246	1,714	2,246	1,714
Total Depreciation and Amortisation	10,066	10,652	10,060	10,652
17. Bad and Doubtful Debts				
Doubtful Debts	605	207	605	188
Total Bad and Doubtful Debts	605	207	605	188
18. Other Expenses				
Contributions and Subscriptions	833	315	834	315
Insurance	1,160	382	1,160	382
Other	7,096	10,354	6,907	10,328
Total Other Expenses	9,089	11,051	8,901	11,025
19. Student and Amenities Fees				
Fees Received	1,124	-	1,124	-
Fees Paid to the Murdoch University Student Guild	(1,057)	-	(1,057)	-
Balance of Student and Amenities Fees	67	-	67	-
20. Cash Assets				
Bank Accounts	22,019	2,452	19,922	2,050
Cash Advances	14	88	14	88
Total Cash Assets	22,033	2,540	19,936	2,138

NOTES TO AND FORMING PART OF THE FINANCIAL STATEMENTS*For the year ended 31 December 2003*

Consolidated		University	
2003	2002	2003	2002
\$000's	\$000's	\$000's	\$000's

21. Financial Assets

Investments:

Unrestricted Financial Assets - Investments

Bank Bills & Deposits	2,358	17,850	2,358	12,627
Shares in Associated Entities	10	10	10	10
Total Unrestricted Financial Assets - Investments	2,368	17,860	2,368	12,637

Disclosed as:

Current Assets	2,368	17,860	2,368	12,637
	2,368	17,860	2,368	12,637

Restricted Financial Assets - Investments

Bank Bills & Deposits - Research Projects	9,418	9,016	9,418	9,016
Total Restricted Financial Assets - Investments	9,418	9,016	9,418	9,016

Disclosed as:

Current Assets	9,418	9,016	9,418	9,016
	9,418	9,016	9,418	9,016

Loans:

Other Financial Assets - Loans

Loan - University Co Pty Ltd	-	-	-	179
Loan - Howard Court Community	20	20	20	20
Loan - MU Guild of Students	150	250	150	250
Club Murdoch	-	277	-	277
Murdoch College	900	900	900	900
Murdoch College - Facilities Fees	68	-	68	-
Murdoch College - Licence Fees	956	-	956	-
Total Other Financial Assets - Loans	2,094	1,447	2,094	1,626

Disclosed as:

Current Assets	169	-	169	-
Non-Current Assets	1,925	1,447	1,925	1,626
	2,094	1,447	2,094	1,626

22. Receivables

Gross Debtors	9,180	10,356	9,614	10,330
less Provision for Doubtful Debts	(1,040)	(2,712)	(1,040)	(2,693)
Net Receivables	8,140	7,644	8,574	7,637

NOTES TO AND FORMING PART OF THE FINANCIAL STATEMENTS*For the year ended 31 December 2003*

	Consolidated		University	
	2003	2002	2003	2002
	\$000's	\$000's	\$000's	\$000's
23. Inventories				
Bookshop	520	370	520	370
Veterinary Hospital	476	370	477	370
Other	1	-	-	-
Total Inventories	997	740	997	740
24. Other Assets				
Advances and Prepayments	1,004	2,055	979	2,041
Total Other Assets	1,004	2,055	979	2,041
Disclosed as:				
Current Assets	1,004	2,055	979	2,041
	1,004	2,055	979	2,041

NOTES TO AND FORMING PART OF THE FINANCIAL STATEMENTS*For the year ended 31 December 2003*

	Consolidated		University	
	2003 \$000's	2002 \$000's	2003 \$000's	2002 \$000's
25(a). Property, Plant and Equipment				
Land at Valuation	95,480	103,305	95,480	103,305
Buildings at Valuation	164,623	171,386	164,623	171,386
less Accumulated Depreciation	-	6,787	-	6,787
	164,623	164,599	164,623	164,599
Buildings at Cost	-	9,908	-	9,908
less Accumulated Depreciation	-	259	-	259
	-	9,649	-	9,649
Buildings (Work in Progress)	15,052	9,117	15,052	9,117
Total Buildings	179,675	183,365	179,675	183,365
Total Land & Buildings	275,155	286,670	275,155	286,670
Plant at Valuation	1,212	1,212	1,212	1,212
less Accumulated Depreciation	71	48	71	48
Total Plant at Valuation	1,141	1,164	1,141	1,164
Computing Equipment at Cost	13,883	15,349	13,883	15,345
less Accumulated Depreciation	12,284	12,632	12,284	12,630
Total Computing Equipment	1,599	2,717	1,599	2,715
Other Equipment at Cost	30,043	29,469	30,011	29,431
less Accumulated Depreciation	21,374	19,380	21,364	19,367
Total Other Equipment	8,669	10,089	8,647	10,064
Motor Vehicles at Cost	1,569	1,515	1,569	1,515
Artworks at Valuation	1,223	1,224	1,223	1,224
Artworks Donated at Fair Value	276	-	276	-
Artworks at Cost	30	13	30	13
Total Artworks	1,529	1,237	1,529	1,237
Library Books at Cost	10,342	9,260	10,342	9,260
less Accumulated Depreciation	2,246	1,714	2,246	1,714
Total Library Books	8,096	7,546	8,096	7,546
Total Property, Plant and Equipment	297,758	310,938	297,736	310,911

NOTES TO AND FORMING PART OF THE FINANCIAL STATEMENTS

For the year ended 31 December 2003

25(b). Property, Plant and Equipment

	Land \$ 000's	Buildings \$ 000's	Buildings (Work in Progress) \$ 000's	Plant \$ 000's	Computing Equipment \$ 000's	Other Equipment \$ 000's	Motor Vehicles \$ 000's	Artworks \$ 000's	Library Books \$ 000's	Total \$ 000's
Reconciliations										
Reconciliations of the carrying amounts of property, plant and equipment at the beginning and end of the current and previous financial year are set out below.										
Consolidated - 2003										
Carrying amount at start of year	103,305	174,248	9,117	1,164	2,717	10,094	1,515	1,237	7,546	310,943
Additions	-	1,367	7,879	-	434	1,471	397	16	2,796	14,360
Additions - Donated at fair value	-	-	-	-	-	-	-	276	-	276
Disposals	-	-	(1,944)	-	(9)	(13)	(234)	-	-	(2,200)
Profit / (loss) on disposals	-	-	-	-	(61)	(145)	(109)	-	-	(315)
Depreciation	-	(3,577)	-	(23)	(1,482)	(2,738)	-	-	(2,246)	(10,066)
Revaluation increment / (decrement)	(7,825)	(7,415)	-	-	-	-	-	-	-	(15,240)
Carrying amount at end of year	95,480	164,623	15,052	1,141	1,599	8,669	1,569	1,529	8,096	297,758
University - 2003										
Carrying amount at start of year	103,305	174,248	9,117	1,164	2,715	10,064	1,515	1,237	7,546	310,911
Additions	-	1,367	7,879	-	434	1,471	397	16	2,796	14,360
Additions - Donated at fair value	-	-	-	-	-	-	-	276	-	276
Disposals	-	-	(1,944)	-	(8)	(14)	(234)	-	-	(2,200)
Profit / (loss) on disposals	-	-	-	-	(60)	(142)	(109)	-	-	(311)
Depreciation	-	(3,577)	-	(23)	(1,482)	(2,752)	-	-	(2,246)	(10,060)
Revaluation increment / (decrement)	(7,825)	(7,415)	-	-	-	-	-	-	-	(15,240)
Carrying amount at end of year	95,480	164,623	15,052	1,141	1,599	8,647	1,569	1,529	8,096	297,736

NOTES TO AND FORMING PART OF THE FINANCIAL STATEMENTS

For the year ended 31 December 2003

25(b). Property, Plant and Equipment

	Land	Buildings	Buildings (Work in Progress)	Plant	Computing Equipment	Other Equipment	Motor Vehicles	Artworks	Library Books	Total
	\$ 000's	\$ 000's	\$ 000's	\$ 000's	\$ 000's	\$ 000's	\$ 000's	\$ 000's	\$ 000's	\$ 000's
Consolidated - 2002										
Carrying amount at start of year	103,305	172,526	7,745	1,188	4,672	11,661	1,548	1,232	6,648	310,525
Additions	-	5,397	9,069	-	651	1,663	366	5	2,612	19,763
Disposals	-	(94)	(7,697)	-	(67)	(102)	(201)	-	-	(8,161)
Profit / (loss) on disposals	-	-	-	-	(72)	(156)	(198)	-	-	(426)
Depreciation	-	(3,581)	-	(24)	(2,467)	(2,977)	-	-	(1,714)	(10,763)
Carrying amount at end of year	103,305	174,248	9,117	1,164	2,717	10,089	1,515	1,237	7,546	310,938
University - 2002										
Carrying amount at start of year	103,305	172,526	7,745	1,188	4,670	11,656	1,534	1,232	6,648	310,504
Additions	-	5,397	9,069	-	651	1,636	366	5	2,612	19,736
Disposals	-	(94)	(7,697)	-	(68)	(97)	(201)	-	-	(8,157)
Profit / (loss) on disposals	-	-	-	-	(72)	(156)	(184)	-	-	(412)
Depreciation	-	(3,581)	-	(24)	(2,466)	(2,975)	-	-	(1,714)	(10,760)
Carrying amount at end of year	103,305	174,248	9,117	1,164	2,715	10,064	1,515	1,237	7,546	310,911

NOTES TO AND FORMING PART OF THE FINANCIAL STATEMENTS*For the year ended 31 December 2003*

	Consolidated		University	
	2003	2002	2003	2002
	\$000's	\$000's	\$000's	\$000's
26. Payables				
Creditors	2,712	3,263	2,650	3,196
Accrued Expenses	2,873	880	2,873	880
Total Payables	5,585	4,143	5,523	4,076
27. Interest Bearing Liabilities				
Current Liabilities				
Western Australian Treasury Corporation				
Student Village Housing	182	178	182	178
Murdoch Retirement Services Pty Ltd	5,590	-	5,590	-
Equine Scintigraphy Facility	235	225	235	225
Murdoch Retirement Services Pty Ltd	-	-	10,726	-
Other	13	-	-	-
Total Current Interest Bearing Liabilities	6,020	403	16,733	403
Non-Current Liabilities				
Western Australian Treasury Corporation				
Student Village Housing	2,437	2,619	2,437	2,619
Murdoch Retirement Services Pty Ltd	-	5,590	-	5,590
Equine Scintigraphy Facility	1,414	1,644	1,414	1,644
Law Building	500	-	500	-
Total Non-Current Interest Bearing Liabilities	4,351	9,853	4,351	9,853
Total Interest Bearing Liabilities	10,371	10,256	21,084	10,256
28. Provisions				
Annual Leave	2,465	2,258	2,478	2,258
Long Service Leave	9,442	9,607	9,442	9,607
Murdoch Retirement Services Pty Ltd	1,399	-	-	-
Total Provisions	13,319	11,865	11,920	11,865
Current Provisions				
Annual Leave	2,465	2,258	2,478	2,250
Long Service Leave	7,094	5,416	7,094	5,416
Murdoch Retirement Services Pty Ltd	1,399	-	-	-
Total Current Provisions	10,958	7,674	9,572	7,666
Non-Current Provisions				
Long Service Leave	2,348	4,191	2,348	4,191
Total Non-Current Provisions	2,348	4,191	2,348	4,191

NOTES TO AND FORMING PART OF THE FINANCIAL STATEMENTS

For the year ended 31 December 2003

	Consolidated		University	
	2003	2002	2003	2002
	\$000's	\$000's	\$000's	\$000's
29. Grants and Fees in Advance				
Commonwealth Government Grants	6,871	7,837	6,871	7,837
Student Fees and Charges	2,750	2,441	2,750	2,441
Murdoch Retirement Services Pty Ltd	549	353	-	-
Total Grants and Fees in Advance	10,170	10,631	9,621	10,278
30. Reserves				
Asset Revaluation Reserve				
Opening Balance	156,080	156,080	156,080	156,080
Net Revaluation Decrements:				
Land	(7,825)	-	(7,825)	-
Buildings	(7,415)	-	(7,415)	-
Closing Balance	140,840	156,080	140,840	156,080
Motor Vehicle Reserve				
Opening Balance	536	504	356	504
Transfer to/(from) Reserve	(113)	32	67	(148)
Closing Balance	423	536	423	356
Total Reserves	141,263	156,616	141,263	156,436
31. Retained Profits				
Opening Balance	158,729	154,401	153,843	152,295
Net Profit/(Loss) from Ordinary Activities	4,388	4,328	(1,152)	1,548
Closing Balance	163,117	158,729	152,691	153,843
32. Commitments				
(a) Capital Commitments				
Estimated future expenditure on approved building projects as at reporting date, but not recognised as liabilities are:				
Not later than one year	6,594	9,109	6,594	9,109
Later than one year but not later than five years	-	1,560	-	1,560
Total Estimated Future Expenditure on Approved Building Projects	6,594	10,669	6,594	10,669
(b) Lease Commitments				
The University has the following operating leases in respect of equipment and motor vehicles. The University's liability for future payments under these leases at reporting date, but not recognised as liabilities are:				
Not later than one year	150	623	150	623
Later than one year but not later than five years	1,520	748	1,520	748
Total Non-cancellable Operating Leases	1,670	1,371	1,670	1,371

NOTES TO AND FORMING PART OF THE FINANCIAL STATEMENTS*For the year ended 31 December 2003*

Consolidated		University	
2003	2002	2003	2002
\$000's	\$000's	\$000's	\$000's

33. Contingent Liabilities

There were no contingent liabilities at reporting date.

34. Events Subsequent to Reporting Date

There were no events subsequent to the reporting date that have a material effect on the financial statements for the reporting period.

35. Equipment Losses and Bad Debt Losses**(a) Losses Through Theft and Default**

Where appropriate, reports were made to the police and insurance claims submitted where the value exceeded the excess on the University's insurance policy.

Theft and Default

78	122	78	122
----	-----	----	-----

(b) Bad Debt Write-offs

Bad debts written off during the year

2,335	164	2,335	164
-------	-----	-------	-----

36. Reconciliation of profit from ordinary activities to net cash flows provided by operating activities

Profit/(Loss) from Ordinary Activities after income tax

4,388	4,328	(1,152)	1,548
-------	-------	---------	-------

Non-cash items:

Depreciation and Amortisation

10,066	10,763	10,060	10,649
--------	--------	--------	--------

Murdoch Retirement Village profits relating to sales

(12,912)	(7,869)	-	-
----------	---------	---	---

Murdoch Retirement Village building costs

742	5,532	888	5,451
-----	-------	-----	-------

Loss on sale of assets

324	243	324	243
-----	-----	-----	-----

Special Reserves

145	32	(113)	(148)
-----	----	-------	-------

Changes in Assets and Liabilities:

(Increase)/Decrease in Receivables

(496)	(1,498)	(937)	(1,571)
-------	---------	-------	---------

(Increase)/Decrease in Advances and Prepayments

1,051	(204)	1,062	(194)
-------	-------	-------	-------

(Increase)/Decrease in Inventories

(257)	40	(257)	40
-------	----	-------	----

Increase/(Decrease) in Payables

1,442	845	(546)	811
-------	-----	-------	-----

Increase/(Decrease) in Grants and Fees in Advance

(461)	835	(657)	760
-------	-----	-------	-----

Increase/(Decrease) in Provisions

1,454	1,333	56	1,330
-------	-------	----	-------

Net Cash from/(used in) Operating Activities

5,486	14,380	8,728	18,919
-------	--------	-------	--------

37. Reconciliation of Cash

For the purposes of the Statement of Cash Flows, cash includes cash on hand and bank accepted bills and deposits.

Cash at bank and on hand

22,033	2,540	19,936	2,138
--------	-------	--------	-------

Bank accepted bills and deposits

11,786	26,876	11,786	21,653
--------	--------	--------	--------

Cash as per the Statement of Cash Flows

33,819	29,416	31,722	23,791
--------	--------	--------	--------

NOTES TO AND FORMING PART OF THE FINANCIAL STATEMENTS*For the year ended 31 December 2003*

Consolidated		University	
2003	2002	2003	2002
\$000's	\$000's	\$000's	\$000's

38. Remuneration of Auditor

The total fees paid and payable to the Office of the Auditor General for the financial year are as follows:

Auditing the accounts (excluding GST)

110	101	98	92
-----	-----	----	----

39. Non Current Investments - Associates

Murdoch University has a 45 per cent ownership interest in Murdoch College Properties Pty Ltd, a company whose principal activity is to provide the infrastructure on the University's campus for the secondary school operations of Murdoch College Inc. The remaining 55 per cent is held by Comprehensive Education Centre, a wholly owned subsidiary of Alexander Education Group. Refer to Note 47.

Equity accounted share in associated entities

Retained profits / (losses) after tax

Shares in associated entities at cost

(60)	(70)	-	-
-	-	-	-
(60)	(70)	-	-

40. Remuneration of Senior Officers

The total of fees, salaries and other benefits received or due and receivable for the financial year by Senior Officers of the University.

1,701	1,276	1,701	1,276
-------	-------	-------	-------

Actual total remuneration

The number of Senior Officers whose total of fees, salaries and other benefits, received or were due and receivable, for the financial year fall within the following bands:

\$10,001 - \$20,000	-	1	-	1
\$50,001 - \$60,000	-	1	-	1
\$70,001 - \$80,000	-	1	-	1
\$80,001 - \$90,000	1	-	1	-
\$120,001 - \$130,000	-	1	-	1
\$130,001 - \$140,000	-	3	-	3
\$150,001 - \$160,000	1	-	1	-
\$160,001 - \$170,000	-	2	-	2
\$170,001 - \$180,000	2	-	2	-
\$180,001 - \$190,000	2	-	2	-
\$220,001 - \$230,000	1	-	1	-
\$250,001 - \$260,000	1	1	1	1
\$260,001 - \$270,000	1	-	1	-

The remuneration of Senior Officers excludes the Vice Chancellor whose remuneration is reported under Remuneration of Senate Members.

NOTES TO AND FORMING PART OF THE FINANCIAL STATEMENTS*For the year ended 31 December 2003*

Consolidated		University	
2003	2002	2003	2002
\$000's	\$000's	\$000's	\$000's

41. Remuneration of Senate Members

The total of fees, salaries and other benefits received or due and receivable for the financial year by Senate Members.

357	336	357	336
-----	-----	-----	-----

Actual total remuneration

The number of Senate Members whose total of fees, salaries and other benefits, received or were due and receivable, for the financial year fall within the following bands:

\$350,001 - \$360,000	1	-	1	-
\$330,001 - \$340,000	-	1	-	1

The Vice Chancellor is the only member of Senate who receives fees, salaries and other benefits.

42. Superannuation Fund Contributions

In respect of Senate Members and Senior Officers the following contributions were made or became payable for the financial year (included in Notes 40 and 41 above):

Senate Members	50	42	50	42
Senior Officers	233	192	233	192
	283	234	283	234

There are no Senate Members and Senior Officers presently employed who are members of the Superannuation and Family Benefits Scheme.

NOTES TO AND FORMING PART OF THE FINANCIAL STATEMENTS

For the year ended 31 December 2003

43. Explanatory Statement

The following compares estimates and actual results for the financial year and actual revenue and expenses from ordinary activities for the financial year and immediately preceding financial year. The explanatory statement reports significant variations.

	Note	2003	2003	2003	2002	Actual
		Actual	Estimate	Variance	Actual	Variance
		\$000's	\$000's	\$000's	\$000's	\$000's
Higher Education Contribution Scheme (HECS)		28,076	27,000	1,076	27,601	475
PELS and BOTPLS	(a)	1,887	1,200	687	675	1,212
Fees and Charges		29,429	27,472	1,957	29,104	325
Western Australian Government Grants	(b)	3,124	3,251	(127)	2,584	540
Other Research Grants and Contracts	(c)	18,942	13,375	5,567	17,014	1,928
Trading Income	(d)	5,554	5,599	(45)	4,717	837
Investment Income	(e)	1,317	876	441	1,156	161
Donations and Bequests	(f)	1,482	801	681	798	684
Student and Amenities Fees	(g)	1,124	-	1,124	-	1,124
Other Revenue	(h)	14,942	18,917	(3,975)	12,031	2,911
		172,628	162,927	9,701	159,162	13,466
Expenses from ordinary activities						
Employee Benefits		93,251	87,754	(5,497)	90,327	(2,924)
Scholarships, Grants and Prizes	(i)	5,803	4,319	(1,484)	5,774	(29)
Materials and Supplies	(j)	41,924	41,116	(808)	31,114	(10,810)
Buildings and Grounds	(k)	2,195	4,875	2,680	5,709	3,514
Depreciation and Amortisation		10,066	11,426	1,360	10,652	586
Bad and Doubtful Debts	(l)	605	-	(605)	207	(398)
Student and Amenities Fees	(g)	1,057	-	(1,057)	-	(1,057)
Other Expenses	(m)	9,089	11,371	2,282	11,051	1,962
		163,990	160,861	(3,129)	154,834	(9,156)

Variations between actuals and estimates for 2003 and actuals for 2003 and 2002.

(a) More students than budgeted and as compared to last year took advantage of the Postgraduate Education Loan Schemes due to the financial incentives introduced by the Federal Government during 2003.

(b) State government grants exceeded last year due to a more successful round of funding applications.

(c) Research revenue was significantly more than budgeted due to a successful round of funding applications.

(d) Trading Income increased from 2002 due to increased sales coupled with a reduction in the cost of sales.

(e) During 2003 there was a higher than budgeted cash balance available for investment coupled with two increases in interest rates resulting in higher than expected investment income.

(f) There were more donations received in 2003 than were budgeted, and in 2002.

(g) The Student and Amenities fee was not a budgeted item as the net effect of the fee is zero, due to all monies received being forwarded to the Murdoch University Guild. 2003 is the first year that this fee has been levied on students.

(h) Delays in the construction of Stage 5 of the St Ives Retirement Village units has resulted in delays in selling these units as compared to the budget. However, the revenue from these sales has increased from 2002 due to an increase in the number sold.

(i) There were more scholarships paid in 2003 than budgeted due to the higher than expected research activity.

(j) Materials and supplies have increased from 2002 due to the increased research activities and higher student numbers.

(k) There were fewer minor building projects undertaken during the year than in 2002 and, as against budget.

(l) Bad and doubtful debts are not budgeted as there is an expectation that all debts will be collected. The increase from the previous year can be attributed to a number of research projects and a debtor going into liquidation.

(m) Delays in the construction of Stage 5 of the St Ives Retirement Village units has resulted in less expenditure as compared to the budget. The expenditure is also less than 2002 due to less units being constructed during this year as compared to last year.

NOTES TO AND FORMING PART OF THE FINANCIAL STATEMENTS

For the year ended 31 December 2003

44. Financial Instruments

(a) Net Fair Value of Financial Assets and Liabilities

The carrying amounts of all the University's financial instruments approximate their net fair values.

(b) Interest Rate Risk Exposures

The following table provides comparative interest rate risks to the University for 2003 and 2002.

	Floating	Fixed Interest Maturing		Non Interest	Total	Average Interest Rate	
	Interest Rate	6 months	6 months	Bearing		Floating %	Fixed %
	\$000's	or less	to 1 year		\$000's		
		\$000's	\$000's	\$000's	\$000's		
2003							
Financial Assets							
Cash	22,033	11,776	-	-	33,809	3.9	4.8
Shares	-	-	-	10	10	-	-
Student loans	-	-	-	130	130	-	-
Receivables	-	-	-	8,010	8,010	-	-
Loans	900	150	-	1,044	2,094	8.4	4.8
Financial Liabilities							
Interest Bearing Liabilities	10,371	-	-	-	10,371	6.2	-
Employee Entitlements	-	-	-	13,306	13,306	-	-
Payables	-	-	-	5,585	5,585	-	-
2002							
Financial Assets							
Cash	2,540	26,866	-	-	29,406	3.9	4.8
Shares	-	-	-	10	10	-	-
Student Loans	-	-	-	89	89	-	-
Receivables	-	-	-	7,555	7,555	-	-
Loans	900	50	200	297	1,447	8.3	4.8
Financial Liabilities							
Interest Bearing Liabilities	10,256	-	-	-	10,256	6.2	-
Employee Entitlements	-	-	-	11,865	11,865	-	-
Payables	-	-	-	3,263	3,263	-	-

(c) Receivables

Debtors are carried at nominal amounts less provision for doubtful debts.

Debtors outstanding as at reporting date totalled \$9.560 million less provision for doubtful debts of \$1.039 million.

Student loans outstanding at reporting date totalled \$130,000.

Credit sales of other products are on 30 day terms.

Tuition fees for international students are payable upon confirmation of acceptance of an offer of admission.

After the first semester of enrolment, payment of tuition fees is required by the end of week one of each semester. If fees remain unpaid as at that date, the students' enrolment may be cancelled or a late payment charge may be applicable.

(d) Payables

Trade liabilities are normally settled within 30 days or on shorter terms as agreed.

(e) Employee Entitlements

Employee Entitlements are presented in accordance with Australian Accounting Standards (AASB1028).

These amounts are adjusted annually to reflect changes in annual and long service leave entitlements.

(f) Credit Risk Exposures

The University's maximum exposure to credit risk at balance date in relation to each class of recognised financial asset is the carrying amount of those assets indicated in the Statement of Financial Position. The University's credit risk is spread over a significant number of parties and is concentrated primarily in Australia.

NOTES TO AND FORMING PART OF THE FINANCIAL STATEMENTS*For the year ended 31 December 2003***45. Segment Information**

The University operates predominantly in the Australian higher education industry providing full-time and part-time degree courses as well as non-award courses to local and fee paying overseas students.

Industry	Revenue		Results		Assets	
	2003	2002	2003	2002	2003	2002
	\$000's	\$000's	\$000's	\$000's	\$000's	\$000's
Higher Education	162,094	150,892	(1,113)	1,447	341,762	346,914
Murdoch Retirement Services Pty Ltd	10,534	8,270	5,501	2,913	2,050	5,326
	172,628	159,162	4,388	4,360	343,812	352,240

Geographical

The entity operated predominantly in Australia during the years 2003 and 2002.

46. Subsidiary Bodies

Name	Murdoch Retirement Services Pty Ltd
Legal Form	Company
Place of Incorporation	Perth, WA
Proportion of Shareholding	100%
Cost of Investment	Nil
Contribution to Operating Result	\$5,501,208 profit for the year
Retained Profits at reporting date	\$10,399,005

Name	Paragen Pty Ltd
Legal Form	Company
Place of Incorporation	Perth, WA
Proportion of Shareholding	62.50%
Cost of Investment	Nil
Contribution to Operating Result	\$289,295 loss for the year
Retained Losses at reporting date	\$441,295

Name	The University Company Pty Ltd
Legal Form	Company
Place of Incorporation	Perth, WA
Proportion of Shareholding	100%
Cost of Investment	Nil
Contribution to Operating Result	\$2,340 loss for the year
Retained Profits at reporting date	Nil

Name	Murdoch Investments Pty Ltd
Legal Form	Company
Place of Incorporation	Perth, WA
Proportion of Shareholding	100%
Cost of Investment	Nil
Contribution to Operating Result	Nil

Name	Murdoch Link Pty Ltd
Legal Form	Company
Place of Incorporation	Perth, WA
Proportion of Shareholding	100%
Cost of Investment	Nil
Contribution to Operating Result	Nil

Name	Murdoch ILO Pty Ltd
Legal Form	Company
Place of Incorporation	Perth, WA
Proportion of Shareholding	100%
Cost of Investment	Nil
Contribution to Operating Result	Nil

Name	Murdoch Ventures Pty Ltd
Legal Form	Company
Place of Incorporation	Perth, WA
Proportion of Shareholding	100%
Cost of Investment	Nil
Contribution to Operating Result	Nil

Name	MS Biotechnology Pty Ltd
Legal Form	Company
Place of Incorporation	Perth, WA
Proportion of Shareholding	57%
Cost of Investment	Nil
Contribution to Operating Result	Nil

NOTES TO AND FORMING PART OF THE FINANCIAL STATEMENTS*For the year ended 31 December 2003***47. Associated Entities**

Name and Principal Activities

Murdoch College Properties Pty Ltd: 45% ownership and voting rights.

The entity leases the land designated for Murdoch College from the University. It carries the loan to build the College and leases this building and the land to Murdoch College Inc.

	2003	2003	2003
	\$000's	\$000's	\$000's
	Retained Profits	Cost	Total
	(Losses)		
Balance at the beginning of the year	(70)	-	(70)
Movements during the year:			
Share of net profit / (loss) before income tax	(4)	-	(4)
Income tax benefit	14	-	14
Dividends received and receivable	-	-	-
Balance at the end of the year	(60)	-	(60)

	2003	2002
	\$000's	\$000's
Total Assets	7,340	8,686
Total Liabilities	7,474	8,842
Total Equity	(134)	(156)
Net profit / (loss) before income tax	(10)	(101)
Net profit / (loss) after income tax	22	(110)

As the audit of Murdoch College Properties Pty Ltd and Murdoch College Inc is yet to be finalised the information above is based on unaudited financial statement balances. The balances disclosed in this note are for information purposes only and do not have a material effect on the financial statements of Murdoch University.

NOTES TO AND FORMING PART OF THE FINANCIAL STATEMENTS*For the year ended 31 December 2003***48. Acquittal of Commonwealth Government Grants**

Amounts received and expended pursuant to the Higher Education Funding Act 1988.

ARC - Australian Research Council

DEST - Department of Education, Science and Training

HECS - Higher Education Contribution Scheme

HEFA - Higher Education Funding Act

PELS - Post-graduate Loans Scheme

SPIRT - Strategic Partnerships with Industry (Research and Training Scheme)

* - Old ARC Schemes

	Operating Financial Assistance		HECS	
	2003 \$000's	2002 \$000's	2003 \$000's	2002 \$000's
Financial Assistance in advance (paid in the previous reporting period for the current reporting period)	-	4,492	888	1,870
Financial Assistance received during reporting period	60,984	56,361	24,759	23,929
Contributions received from students	-	-	-	-
Financial Assistance in advance (received in the reporting period for the next reporting period)	-	(3,436)	-	(1,981)
Revenue attributed to the reporting period	60,984	57,417	25,647	23,818
Surplus prior year	700	497	-	-
Funds available for the reporting period	61,684	57,914	25,647	23,818
Expenses for current period	(61,684)	(57,214)	(25,647)	(23,818)
Surplus for reporting period	-	700	-	-

NOTES TO AND FORMING PART OF THE FINANCIAL STATEMENTS*For the year ended 31 December 2003***48. Acquittal of Commonwealth Government Grants**

	Capital Development Pool		ARC Discovery Projects /Large Grants*	
	2003 \$000's	2002 \$000's	2003 \$000's	2002 \$000's
Financial Assistance in advance (paid in the previous reporting period for the current reporting period)	-	-	-	-
Financial Assistance received during reporting period	-	-	1,544	1,365
Financial Assistance in advance (received in the reporting period for the next reporting period)	-	-	-	(85)
Revenue attributed to the reporting period	-	-	1,544	1,280
Surplus prior year	-	-	740	726
Funds available for the reporting period	-	-	2,284	2,006
Expenses for current period	-	-	(1,473)	(1,266)
Surplus for reporting period	-	-	811	740

	ARC Linkage Projects /SPIRT*		ARC International Researcher Exchange	
	2003 \$000's	2002 \$000's	2003 \$000's	2002 \$000's
Financial Assistance in advance (paid in the previous reporting period for the current reporting period)	-	-	-	-
Financial Assistance received during reporting period	1,982	1,418	21	13
Financial Assistance in advance (received in the reporting period for the next reporting period)	-	(114)	-	(2)
Revenue attributed to the reporting period	1,982	1,304	21	11
Surplus prior year	533	367	31	8
Funds available for the reporting period	2,515	1,671	52	19
Expenses for current period	(1,451)	(1,138)	(27)	12
Surplus for reporting period	1,064	533	25	31

NOTES TO AND FORMING PART OF THE FINANCIAL STATEMENTS*For the year ended 31 December 2003***48. Acquittal of Commonwealth Government Grants**

	DEST International Postgraduate Research		ARC Infrastructure Equipment & Facilities	
	2003 \$000's	2002 \$000's	2003 \$000's	2002 \$000's
Financial Assistance in advance (paid in the previous reporting period for the current reporting period)	-	-	1,041	-
Financial Assistance received during reporting period	247	228	-	1,388
Financial Assistance in advance (received in the reporting period for the next reporting period)	-	-	-	(1,041)
Revenue attributed to the reporting period	247	228	1,041	347
Surplus prior year	-	-	2	3
Funds available for the reporting period	247	228	1,043	350
Expenses for current period	(247)	(228)	(904)	(348)
Surplus for reporting period	-	-	139	2

	ARC Special Research Initiatives		DEST Small Grants*	
	2003 \$000's	2002 \$000's	2003 \$000's	2002 \$000's
Financial Assistance in advance (paid in the previous reporting period for the current reporting period)	-	-	-	-
Financial Assistance received during reporting period	30	-	-	(9)
Financial Assistance in advance (received in the reporting period for the next reporting period)	-	-	-	-
Revenue attributed to the reporting period	30	-	-	(9)
Surplus prior year	-	-	-	45
Funds available for the reporting period	30	-	-	36
Expenses for current period	-	-	-	(36)
Surplus for reporting period	30	-	-	-

NOTES TO AND FORMING PART OF THE FINANCIAL STATEMENTS*For the year ended 31 December 2003***48. Acquittal of Commonwealth Government Grants**

	DEST Research Infrastructure Block Grants		DEST Australian Postgraduate Awards	
	2003 \$000's	2002 \$000's	2003 \$000's	2002 \$000's
Financial Assistance in advance (paid in the previous reporting period for the current reporting period)	150	120	-	-
Financial Assistance received during reporting period	1,734	1,539	1,325	1,367
Financial Assistance in advance (received in the reporting period for the next reporting period)	-	(150)	-	-
Revenue attributed to the reporting period	1,884	1,509	1,325	1,367
Surplus prior year		715	75	-
Funds available for the reporting period	1,884	2,224	1,400	1,367
Expenses for current period	(1,884)	(2,224)	(1,195)	(1,292)
Surplus for reporting period	-	-	205	75

	ARC Indigenous Researchers Development		HEFA Research Research Training Scheme	
	2003 \$000's	2002 \$000's	2003 \$000's	2002 \$000's
Financial Assistance in advance (paid in the previous reporting period for the current reporting period)	-	-	-	-
Financial Assistance received during reporting period	31	30	-	686
Financial Assistance in advance (received in the reporting period for the next reporting period)	-	(2)	-	(686)
Revenue attributed to the reporting period	31	28	-	-
Surplus prior year	-	-	-	-
Funds available for the reporting period	31	28	-	-
Expenses for current period	(20)	(28)	-	-
Surplus for reporting period	11	-	-	-

NOTES TO AND FORMING PART OF THE FINANCIAL STATEMENTS*For the year ended 31 December 2003***48. Acquittal of Commonwealth Government Grants**

	HEFA Research Institutional Grants Scheme		PELS	
	2003 \$000's	2002 \$000's	2003 \$000's	2002 \$000's
Financial Assistance in advance (paid in the previous reporting period for the current reporting period)	-	-	-	-
Financial Assistance received during reporting period	-	340	-	675
Financial Assistance in advance (received in the reporting period for the next reporting period)	-	(340)	-	-
Revenue attributed to the reporting period	-	-	-	675
Surplus prior year	-	-	-	-
Funds available for the reporting period	-	-	-	675
Expenses for current period	-	-	-	(675)
Surplus for reporting period	-	-	-	-

Summary of Unspent Financial Assistance

Category of Grant	Unspent Financial Assistance	
	2003 \$000's	2002 \$000's
Teaching and Learning		
Operating excluding HECS	-	700
ARC		
Discovery Projects/Large Grants	811	740
Linkage Projects/ SPIRT	1,064	533
Indigenous Researchers Development	11	-
International Researcher Exchange	25	31
Infrastructure - Equipment & Infrastructure	139	2
Special Research Initiative Projects	30	-
DEST		
Australian Postgraduate Awards	205	75
Small Grants	-	-
Research Infrastructure Block Grants	-	-
Total	2,285	2,081

It is expected that the total amount of the unspent financial assistance will be approved by the Commonwealth Government for carry over to 2004.

