



**Kimberley Development Commission**

**ANNUAL REPORT**

**For the period ended 30 June 2004**

7 Ebony Street  
PO Box 620  
KUNUNURRA WA 6743  
Tel: 08 9168 1044  
Fax: 08 9168 1473

West Kimberley House  
Loch Street  
PO Box 845  
DERBY WA 6728  
Ph: 08 9193 1444 / 08 9193 1857  
Fax: 08 9193 1445

Cnr Napier & Dampier Tce  
PO Box 172  
BROOME WA 6725  
Ph: 08 9193 6795  
Fax: 08 9193 6142

The Hon Tom Stephens MLC  
Minister for Local Government and Regional Development;  
Heritage; the Kimberley, Pilbara  
and Gascoyne; Goldfields-Esperance  
Parliament House  
PERTH WA 6000

In accordance with Section 66 of the *Financial Administration and Audit Act 1985*, I hereby submit for your information and presentation to Parliament, the Annual Report of the Kimberley Development Commission for the financial year ended 30 June 2004.

The Annual Report has been prepared in accordance with the provisions of the Financial Administration and Audit Act 1985 and Section 32 of the Regional Development Commissions Act 1993.



Patrick Dodson  
Chairperson

27 August 2004



Jeff Gooding JP  
Member of Accountable Authority

24 August 2004

**TABLE OF CONTENTS**

CHAIRPERSON'S REPORT	4
THE KIMBERLEY REGION – OVERVIEW, ISSUES, TRENDS	6
KIMBERLEY DEVELOPMENT COMMISSION CORPORATE STRUCTURE	8
CORPORATE MANAGEMENT – BETTER PLANNING: BETTER SERVICES	12
REGIONAL DEVELOPMENT ACTIVITIES 2003/2004– BETTER PLANNING: BETTER SERVICES	25
PERFORMANCE INDICATORS	43
FINANCIAL STATEMENTS	50
BETTER PLANNING: BETTER SERVICES, A STRATEGIC PLANNING FRAMEWORK FOR THE WESTERN AUSTRALIAN PUBLIC SECTOR	68

The 2003/2004 Annual Report of the Kimberley Development Commission is in accordance with the requirements set out in the Premier's Circular No. 2004/08 *Annual Reporting*. In addition to the reporting required by relevant legislation, the Annual Report reports on the Commission's efforts and accomplishments in terms of *Better Planning: Better Services – A Strategic Planning Framework for the Western Australian Public Sector, November 2003*. The last section of the Annual Report provides a cross reference to those sections within the Report that relate to the goals of the *Better Planning Better*

## CHAIRPERSON'S REPORT

I was delighted to take up the position of Chairperson of the Kimberley Development Commission in January 2004. The Commission has played an important part in the economic, social and community development of the Kimberley region over the last 10 years, and I look forward to being involved in continuing this good work in conjunction with other Board members and staff.

I would especially like to acknowledge the leadership and commitment of the previous Chair, Dr George Gardiner. As Chairperson, Dr Gardiner made an enormous contribution to the Kimberley Region overall and to the Kimberley Development Commission in particular. His dedication to improving the well being of all Kimberley residents is widely recognised and appreciated.

In addition to its statutory obligations and reporting requirements, the Commission strives to incorporate into its work, the goals of relevant policies of the government of Western Australia. In particular, the following policies and documents are relevant to how the Commission shapes its approach to carrying out its regional development role in the Kimberley:

- *Regional Western Australia – A Better Place to Live;*
- *State Government and Indigenous Peoples Statement of Commitment to a New and Just Relationship;*
- *The State Sustainability Strategy;*
- *The Gordon Inquiry*
- *Better Planning: Better Services, A Strategic Planning Framework for the Western Australian Public Sector.*

The Kimberley Development Commission has continued to facilitate a balance of social and economic development in the Kimberley, in accordance with its statutory purpose and objectives. To do this the Commission works in partnership with regional, State and Commonwealth stakeholders. These partnerships are highly valued by the Commission and are integral to the way we operate. The Commission works collaboratively with a wide range of industry, government and community organisations to ensure that their respective views are represented and reflected in government initiatives affecting the region.

The Kimberley has a small and diverse population that is spread over a large and geographically isolated area. Nearly half of the overall population is indigenous. The region has substantial natural resources, some of which have not yet been fully explored, and also a stunning and often fragile environment. These characteristics shape the nature of regional development in the area.

A modern and efficient infrastructure is crucial to both the development of industry and the delivery of services to the residents of towns, communities and remote locations. During 2003/2004 the Commission supported a number of major regional infrastructure projects. These included ongoing support for the attainment of funds for the Port of Broome's jetty extension, and examining the development of the Broome Slipways. It has been closely involved in the policy decisions surrounding air services in the Kimberley, and both intra and interstate services have picked up substantially since their low point after the collapse of Ansett airlines in 2001. Similarly, the Commission continues to support the extension of important telecommunications infrastructure within the region.

The Commission regards planning for future needs, both in relation to infrastructure and other aspects of development, as vital to having the information and community input necessary for good decision making. Both the Broome Planning Study and the Derby Revitalisation Project, to which the Commission has made a significant commitment during 2003/2004, will bring together a wide range of community perspectives and other data to provide a basis for further progress.

In addition, the Kimberley Development Commission has been instrumental in the continuing negotiations relating to the establishment of the Fitzroy Crossing Community Resource Centre. The provision of this sort of social and community infrastructure is a necessary part of regional development in the Kimberley.

Industry development and diversification are high on the list of priorities for the Kimberley Development Commission. In partnership with relevant industry bodies and government instrumentalities, the Commission has been closely involved in examining the feasibility of emerging industries in the areas of aquaculture, agriculture and mining. Linked to this has been promotion of the Kimberley to prospective investors and to potential tourist markets.

Of particular importance is the work that the Commission has begun with Argyle Diamond Mines to examine sustainable benefits of the mine to the East Kimberley and the implications of Argyle's decision as to whether it furthers its operational life in the region by developing underground mining.

Indigenous enterprises continue to develop and expand and the Commission recognises the highly important economic, social and cultural contributions that this sector makes to the region. The Commission has continued over the last year to work with indigenous enterprises such as the Broome Aquaculture project and tourism development on the Dampier Peninsula, to advocate for indigenous employment in the Ord River Irrigation Area Stage 2 development and to work with Argyle Diamond Mine on their indigenous employment policy. Supporting indigenous enterprise is an important way for the Commission to assist in a more equitable distribution of the economic wealth generated in the Kimberley.

The third round of the Kimberley Regional Development Scheme was administered by the Commission during 2003/04, and provided a means for the Kimberley Development Commission to directly support a range of projects. Successful projects included support for indigenous enterprise, bringing art and cultural events to Kimberley towns, youth initiatives, a regional resource sector study, community initiatives, and regional promotion via West Australian's *'Realms of Possibility' Regions of WA - Kimberley*. In addition, the Commission continued to use its resources to leverage funding support for other important projects in the Kimberley.

In the short time I have been Chairperson of the Commission, I have been impressed by the dedication of Members of the Board and Commission staff. They have provided a highly professional service to the Kimberley and are widely recognised for the proactive, creative and committed nature of their work. I thank both my fellow Board members and our highly skilled staff for the leadership and expertise they have brought to the Commission and their commendable focus on achieving positive outcomes for the people of the Kimberley.



Patrick Dodson  
Chairperson  
Kimberley Development Commission

## **THE KIMBERLEY REGION – OVERVIEW, ISSUES, TRENDS**

The Kimberley Region of Western Australia is the State's most northern region and encompasses an area of 424,517 square kilometres (including the offshore area), which is almost twice the size of the State of Victoria and three times that of the United Kingdom. The Kimberley is strategically located on the southern margins of Southeast Asia.

The Kimberley Region had an estimated resident population of 34,369 at 30 June 2003. This represents 6.5 of the population of regional Western Australia and 1.8 per cent of the State as a whole. In the 12 months to June 2003, the Kimberley population grew at the second fastest rate of 2.1 per cent and on average at the fastest annual rate of 4.2 per cent over the five years to 2003. Population projections by the Department of Planning and Infrastructure indicate that the relatively high rate of population growth is likely to continue.

Nearly half of the population of the region is indigenous and overall the population is younger than in the other regions of the state. The median age in the Kimberley at 30 June 2003 was 29.1, the lowest in the state. This is reflected in the high proportion of the Kimberley population aged 0-14 (27%) and the low proportion of people aged 65 years or over (4.4%). These population characteristics have important implications for the way in which development in the Region is approached. An infrastructure of modern telecommunications, excellent transport facilities and essential services is necessary to ensure that jobs, business opportunities, education, housing and health services are accessible to a diverse and dispersed population. Maintenance and expansion of this infrastructure will continue to be a high priority in order to facilitate regional development in the Kimberley.

There are four local government areas in the Kimberley. These are Broome, Wyndham-East Kimberley, Halls Creek and Derby-West Kimberley. The main population centres in the Kimberley are Broome, Kununurra, Derby, Halls Creek, Wyndham and Fitzroy Crossing. In addition there are over 100 Indigenous communities that range in size from one family to nearly one thousand people.

The region is endowed with substantial natural resources, which are the basis of the Kimberley's major industries including mining, agriculture, pearling and tourism. The utilisation of natural resources presents great opportunities as well as challenges in terms of the infrastructure required and the need to ensure that development processes are commercially and environmentally sustainable.

In 2002/03, the Gross Regional Product was \$1.2 billion, a 0.5 per cent increase over the previous year. The largest contributor to this was the mining and petroleum industry, with a gross value of \$948.5 million in 2002/03. The mining industry increased its value from \$665.1 million in 2001/2002 due to a substantial increase in the value of production of diamonds. The gross value of production of Kimberley diamonds increased from \$488 million in 2001/2002 to \$770.1 million in 2002/2003. While the Argyle Diamond Mine is the largest diamond mine in the Kimberley, its production has been complemented in 2002/03 by production from the Ellendale Mine, which will add to export earnings and employment.

Oil and gas exploration continues off shore in the Bonaparte and Browse basins. In addition a nickel/copper/cobalt concentrate mine is being developed in the East Kimberley.

The closure of the Lennard Shelf zinc and lead mine operated by Western Metals, in 2003, has had a negative impact on employment in Broome and Derby, with the loss of mining and wharf (Derby) jobs. The West Kimberley Resource Development Study is assessing the potential of a range of mining possibilities in the West Kimberley and offshore areas and this will provide a strategic framework for further mining development. This complements the Tanami-East Kimberley Minerals Study, which identified potential mining opportunities in the Tanami desert and Halls Creek areas.

The aquaculture industry is a long standing part of the Kimberley economy. Pearling contributes the greatest value to the sector being valued at \$150 million in 2002 / 2003. Research and development of new aquaculture industries such as barramundi, prawns and trochus is underway across the Region.

One of the oldest industries in the Kimberley is the pastoral industry, which supported a cattle herd of 531, 000 in 2001. The majority of cattle turned off stations in the Kimberley are exported live to Indonesia, Malaysia and in smaller numbers to the Middle East. Livestock disposals were worth \$69.1 million in 2000 / 2001.

Horticulture produced from the Ord River Scheme makes up the balance of agriculture production in the region. The main field crop is sugar, valued at \$16.1 million in 2001 /2002. Horticulture produce also includes melons, bananas, mangoes, a range of other fruit, and a smaller range of vegetables. The total value of agricultural production in the Ord River Irrigation Area Stage 1 in 2001 / 2002 amounted to \$57.1 million

Tourism is a high profile industry throughout the Kimberley, with a range of market segments including eco tourism, 4WD opportunities, luxury coastal cruising, beachside resorts, and Indigenous cultural tours. The estimated average expenditure for the 2002 and 2003 calendar years by visitors to the Kimberley was \$268.3 million. Iconic attractions such as Purnululu and Geikie Gorge National Parks, Cable Beach and the Buccaneer Archipelago continue to attract Australian and overseas tourists. There were 319,700 visitors to the Kimberley on average over 2002 and 2003, the majority of whom were domestic visitors with the greatest number coming from the Perth metropolitan area. Although visitor numbers were down slightly, visitors stayed longer and spent more overall compared to previous years.

It is important that indigenous communities and individuals participate in the economy and share in the opportunities that a growing economy offers. Indigenous communities make up a significant part of the Region's economy, and indigenous people are increasingly developing their own economic opportunities, as well as participating in existing industries. Businesses in the areas of tourism, aquaculture, art and culture and retail are being established and operated by indigenous people.

The growing economy and improving services provide the means by which the rapidly increasing population of the Kimberley can prosper and access opportunities for themselves and their families. Combined with the spectacular natural beauty of the region, these opportunities, if used wisely, will continue to increase the well being of people across the Kimberley, truly making it a "better place to live".

## **KIMBERLEY DEVELOPMENT COMMISSION**

### **CORPORATE STRUCTURE**

#### **Legislative Base**

##### *Enabling Legislation and Policy*

The Kimberley Development Commission is established as a Statutory Authority under the *Regional Development Commissions Act 1993* (as amended).

##### *Legislation Impacting on the Kimberley Development Commission's Activities*

In the performance of its functions, the Kimberley Development Commission complies with the following relevant written laws:

- Regional Development Commissions Act, 1993
- Financial Administration & Audit Act, 1985
- Public Sector Management Act, 1994
- Salaries and Allowances Act, 1975
- Equal Opportunity Act, 1984
- Government Employees Superannuation Act, 1987
- Occupational Safety and Health Act, 1984
- Workers Compensation and Rehabilitation Act, 1981
- Industrial Relations Act, 1979
- State Supply Commission Act, 1991
- Government Employees Housing Act, 1964
- Freedom of Information Act, 1992
- Disability Services Act, 1993
- Fringe Benefits Tax Act, 1986
- Public and Bank Holidays Act, 1972
- Electoral Act, 1907
- Library Board of Western Australia Act, 1993
- Minimum Conditions of Employment Act, 1993

The Commission complies with the requirements of the Financial Administration and Audit Act, 1985 and every other relevant written law, and exercises controls which provide reasonable assurance that the receipt, expenditure and investment of moneys, the acquisition and disposal of public property and incurring of liabilities are in accordance with legislative provisions.

At the date of signing, we are not aware of any circumstances that would render the particulars included in this statement misleading or inaccurate.



***Responsible Minister***

The Commission is responsible to the Minister for Local Government and Regional Development; Heritage; the Kimberley, Pilbara and Gascoyne; Goldfields-Esperance, the Hon Tom Stephens MLC.

***Changes in Written Law***

There were no changes in any written law that affected the Commission during the 2003/2004 financial year.

***Ministerial Directives***

No Ministerial directives were received during the financial year.

## **KIMBERLEY DEVELOPMENT COMMISSION GOALS**

### ***Mission***

Our mission is to facilitate the development of the Kimberley for the prosperity and benefit of all its people.

We are proactive and inclusive in our corporate activities as we strive to continually enhance the well being of the region's people, its communities and its organisations through our leadership and actions in support of social and economic development.

### ***Purpose***

To achieve an environment which is conducive to the balanced economic and social development of the Kimberley region.

### ***Statutory Objectives and Functions***

The Commission provides an integral component of a 'whole-of-government' approach to the requirements of regional development. By assisting in the co-ordination of responsibilities of a wide range of agencies having impact on regional development, the Commission is able to perform an important role in identifying needs and providing advice on the appropriate application of Government resources to the region.

As prescribed under Section 23(1) of the Act, the objectives of the Commission are to:

- Maximise job creation and improve career opportunities in the region;
- Develop and broaden the economic base of the region;
- Identify infrastructure services to promote economic and social development within the region;
- Provide information and advice to promote business development within the region;
- Seek to ensure that the general standard of government services and access to those services in the region is comparable to that which applies in the metropolitan area; and,
- Generally take steps to encourage, promote, facilitate and monitor the economic development in the region.

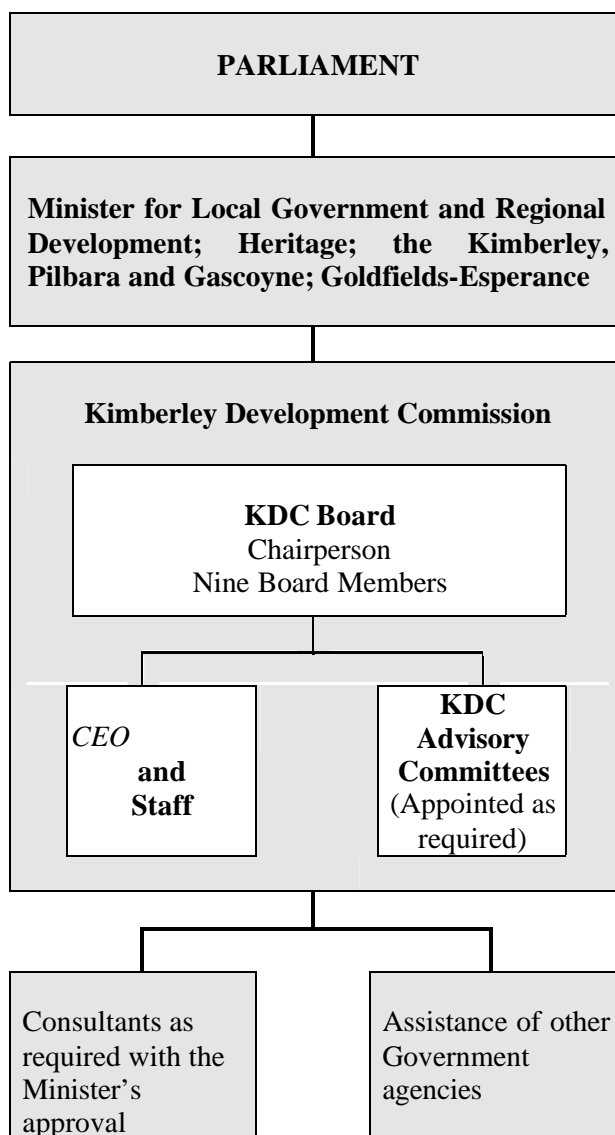
In order to meet its objectives, the Commission is to:

- promote the region;
- facilitate co-ordination between relevant statutory bodies and State Government agencies;
- co-operate with representatives of industry and commerce, employer and employee organisations, education and training institutions and other sections of the community within the region;
- identify the opportunities for investment in the region and encourage that investment;
- identify the infrastructure needs of the region, and encourage the provision of that infrastructure in the region; and
- cooperate with:
  - (i) Departments of the Public Service of the State and the Commonwealth, and other agencies, instrumentalities and statutory bodies of the State and Commonwealth; and
  - (ii) Local government authorities, in order to promote equitable delivery of services within the region.

***Outputs (goods or services) provided to the public sector in WA***

To ensure that our objectives and desired outcomes are achieved, the Commission implemented the following:

- A Customer Satisfaction Survey was sent to the Commission's major customers during the year to obtain client feedback and response on the Commission's performance, and to provide input towards Performance Indicator data.
- The Commission's website is continually up-dated with current information, with staff in each of the region's three offices being primary points of contact to customers and the public.

**KIMBERLEY DEVELOPMENT COMMISSION BOARD AND STAFF***Organisational Chart**Board Profiles*

The Kimberley Development Commission Board is established under Sections 7, 15 & 16 of *Regional Development Commissions Act 1993* and comprises the following membership:

- Three members representing the regional community;
- Three members representing Local Government;
- Three members appointed at the Minister's discretion; and
- The Kimberley Development Commission's Chief Executive Officer.

The Board is appointed by and responsible to the Minister for Local Government and Regional Development; Heritage; the Kimberley, Pilbara and Gascoyne; Goldfields-Esperance. The Kimberley Development Commission is an accountable authority and advises the Minister on matters affecting the development of the region and sets the primary directions for the Commission.

The Members of the Board at 30 June 2004 were:

***Patrick Dodson – Chairperson***

Patrick Dodson is a Yawuru man from Broome in Western Australia and is the Chairman of the Lingiari Foundation, an Indigenous non government advocacy and research Foundation. He is a former Director of the Central Land Council and the Kimberley Land Council, a former Royal Commissioner into the Aboriginal Deaths in Custody and for six years was the Chairman of the Council for Aboriginal Reconciliation.

Patrick lives and works as a consultant advising government, industry and community groups in Broome Western Australia with his family where he is also involved in matters relating to the preservation and enhancement of indigenous rights and culture.

Term expires November 2006.

***Cr Barbara Johnson– Deputy Chairperson***

Cr Johnson has resided in the East Kimberley for 21 years.

Cr Johnson is the current President of the Shire of Wyndham East Kimberley; Chair of the East Kimberley District Health Advisory Council; Deputy Chair of the Governing Council of the Kimberley College of TAFE; Member of the Kimberley Sustainable Regions Advisory Committee and the Kimberley Area Consultative Committee; Member of the Kimberley Aviation Tourism Development Committee and a Justice of the Peace.

Term expires November 2005.

***Wayne Bergmann – Member***

Mr Wayne Bergmann is currently employed as the Executive Director of the Kimberley Land Council. He first worked as a boilermaker and contractor on a number of West Kimberley cattle stations, before taking employment with Mangkaja Arts and then the Kimberley Aboriginal Law and Culture Centre.

Wayne completed a law degree at Murdoch University and worked in Chambers and private practice in Perth, before returning to the Kimberley and taking up the position with the Kimberley Land Council. He is committed to securing the rights and interests of Kimberley Traditional Owners through the native title system and promoting the social and economic well-being of his people. Wayne strongly believes that native title brings greater opportunity for all Kimberley people.

Term expires 30 June 2005.

***Josie Farrer - Member***

Cr Farrer is a Councillor on the Shire of Halls Creek and has served on the Council for a period of 15 years. She was President of the Shire for seven years of that time. Cr Farrer is a Member of the Kimberley Sustainable Regions Advisory Committee.

Term expires November 2004.

***Cr Peter Kneebone - Member***

Cr Kneebone is a long term Derby resident. He is a professional automotive engineer and operated a multi-discipline business in Derby for many years. In this role he successfully trained more than 15 trade apprentices who now either own or manage business enterprises.

He is currently serving as a Councillor for the Shire of Derby West Kimberley. Cr Kneebone is also a member of the North Kimberley and West Kimberley Land Conservation District Committees, a Member of the Zone Control Authority (the advisory body to the Agricultural Protection Board) and a Member of the Pastoralist and Graziers Association. Cr Kneebone is the Kimberley Shires representative on the Rangelands Natural Resource Management Coordinating Group and the Kimberley Regional Fire Management Project. Cr Kneebone is also a strong proponent of environmental sustainability and a more appropriately focused education and training policy to be applied in the Kimberley.

Term expires November 2005.

***Mr Alan Tietzel***

Alan Tietzel is currently employed by Argyle Diamonds as General Manager Regional Strategies based in Kununurra. Alan's early background is in education. Alan first worked for Argyle from 1990 to 1993 in training and industrial relations roles. For the next nine years Alan held positions in the mining and manufacturing industries including Dampier Salt, CRA Headquarters, and Westfarmers Fertilisers & Chemicals. Alan returned to Argyle in 2002 as General Manager Human Resources, and more recently as General Manager Regional Strategies.

His responsibilities now target the advancement of Argyle's sustainability strategies, particularly in regard to local community relations, regional development and localisation of the Argyle workforce.

Term expires November 2006.

***Cr Thomas Vinnicombe***

Cr Tom Vinnicombe is currently the Shire President of the Shire of Broome, President of the Kimberley zone of the Western Australian Local Government Association, and a State Councillor of the Western Australian Local Government Association. He is Principal of Kimberley Structural Consulting Engineers in Broome

Cr Vinnicombe is a member of the Kimberley Regional Road Group, the committee of the Broome Enterprise Centre, the Broome Chamber of Commerce and is a life member of the Sail Training Association of W.A.

Term expires November 2006.

***Ruth Webb Smith – Member***

Mrs Webb-Smith Vice President of the Pastoralists and Graziers Association of WA and the Chairperson of the Kimberley Division of the PGA, Committee member of the Kimberley Regional Fire Management Committee, and a previous owner/operator of Beefwood Park Station.

Term expires November 2004.

***Cr Veronica (Nik) Wevers***

Ms Wevers has lived in the Kimberley and Pilbara areas since 1979 and is currently the Deputy Chair of the Shire of Broome and a director of the Broome Port Authority. Ms Wevers has been active in a number of community organisations including the North West Women's Association, Women's Isolated and Remote Legal Service, Kimberley Community Legal Service, Catherine House, Kimberley Regional Domestic Violence Committee, Kimberley Sexual Assault Information Service, and Budekin Youth in Action.

She has extensive knowledge and a good understanding of the cultural and social issues facing remote communities in the Kimberley.

Term expires November 2006.

***Jeff Gooding – ex officio Member***

Mr Gooding is the Chief Executive of the Kimberley Development Commission, ex officio Board Member and resident of Kununurra.

Mr Gooding is a Member of the Ord State Steering Committee, Shire of Wyndham East Kimberley and Shire of Broome Local Planning Strategy Committees, the Strategic Aviation Committee and the Derby Port Committee.

He is also a Member of the Kimberley Sustainable Regions Advisory Committee, the Kimberley Aviation Tourism Development Committee, the Shire of Wyndham East Kimberley and Shire of Derby West Kimberley Aviation Committees, and the Kimberley Sustainable Tourism Project Steering Committee.

***Senior Officers******Jeff Gooding (Chief Executive)***

Mr Gooding has 25 years experience in the WA public sector.

***Kelvin Barr (A/Assistant Director)***

Mr Barr has 30 years experience in public sector programs at the State, Commonwealth and community level.

***Advisory Committees***

The Board, by resolution, is empowered to appoint advisory committees to assist in providing specialist advice to the Board. Such committees are formed on a needs basis. The Commission has established the Kimberley Aviation Tourism Development Committee.

***Contracts with Senior Officers***

At the date of reporting, other than normal contracts of employment of service, no Board Members or Senior Officers, or firms of which Members or Senior Officers are members, or entities in which Members or Senior Officers have substantial interests, had any interests in existing or proposed contracts with the Commission and Members or Senior Officers.

***Staff Profile***

Staff Employed (not FTE)	2003	2004
Full-time permanent	5	5
Full-time contract	4	5
Part-time permanent	1	1
Part-time contract	0	1
On secondment	0	0
Positions vacant (one full and one part-time)	2	0
Total	10	12



## **CORPORATE MANAGEMENT – BETTER PLANNING: BETTER SERVICES**

This section of the Annual Report summarises the Commissions' Corporate Management for the year 2003/2004. It focuses on the processes that the Commission is following to provide for particular groups of our customers and also on our systems of governance. These are in accordance with the obligatory reporting requirements under the goals of the *Better Planning: Better Services, A Strategic Planning Framework for the Western Australian Public Sector*.

### **Providing for People and Communities**

#### ***Disability Services Plan Outcomes***

*(Disability Services Act 1993, S29)*

The Commission has in place a Disability Services Plan which focuses on the five key outcomes outlined below.

- Existing services are adapted to ensure they meet the needs of people with disabilities;
- Access to buildings and facilities is improved;
- Information about services is provided in formats which meet the communication requirements of people with disabilities;
- Advice and services are delivered by staff who are aware of and understand the needs of people with disabilities;
- Opportunities are provided for people with disabilities to participate in public consultations, grievance mechanisms and decision-making processes.

The following initiatives have been implemented to collectively address these outcomes:

- relocation of the Kununurra office of the Commission from first floor to ground floor office premises to provide greater access to its services, library and conference facilities;
- the construction of a ramp at the front entrance to the Kununurra office;
- continued implementation of an outreach strategy to liaise with people with disabilities;
- the provision of information in a range of formats including spoken, visual and written;
- creating an awareness amongst all staff of the needs of people with disabilities;
- making the Disability Services Plan available on request, without charge.

#### ***Cultural Diversity and Language Services Outcomes***

*(Language Services Policy of the Public Sector)*

The Commissions' client base comprises the people of the Kimberley Region of Western Australia, of which the following table provides an overview and comparison with Western Australia and Australia.

<b>Summary Indicators</b>	<b>Kimberley</b>	<b>WA</b>	<b>Australia</b>
Population	31,179	1,828,294	18,769,249
Australian born	24,760	1,237,692	13,629,683
Overseas born	3,127	495,771	4,105,468
Indigenous	13,593	58,467	410,003
Language other than English	5,048	206,840	2,853,829
<b>Percentages</b>			
Australian born	79.4	67.7	72.6
Overseas born	10.0	27.1	21.9
Aboriginal and/or TSI	43.5	3.2	2.2
Language other than English	16.2	11.3	15.2

Source: The Department of Immigration and Multicultural and Indigenous Affairs "The People of Western Australia, Statistics from the 2001 Census". (The Kimberley data is extrapolated from data provided for the four Kimberley Local Government Areas).

The Commission aims to provide both culturally appropriate and accessible services to its' clients. In this context it assists clients where language is, or may be a barrier in a number of ways:

- by responding to the needs of individual clients;
- by encouraging non-English speaking clients to be accompanied by a supportive friend, relative or colleague;
- by offering and arranging access to culturally and gender appropriate, Interpreting Services which are accredited with the National Accreditation Authority for Translators and Interpreters.

The Commission's staff comprises both non-Indigenous and Indigenous members who collectively, have extensive experience working with Indigenous people in the Kimberley.

### **Youth Outcomes**

*(A State Government Plan for Young People, 2000-2003)*

The State Government Plan for Young People, 2000-2003 has the following goals:

- Promoting the positive image of young people;
- Promoting the broad social health, safety and well being of young people;
- Better preparing young people for work in adult life;
- Encouraging employment opportunities for young people;
- Promoting the development of personal and leadership skills;
- Encouraging young people to take on roles and responsibilities, which lead to active adult citizenship.

In working towards achieving these goals, the Commission has participated in the following social and economic development opportunities, which aim to benefit young people in the Kimberley:

- providing grant funding for a number of youth related initiatives including:
  - the Ricky Grace Armour Tour 2004 which promotes healthy lifestyles amongst young people in remote Aboriginal Communities;
  - Perth International Arts Festival to the region, incorporating youth activities;
- supporting a traineeship position each year; this is currently filled by a young Indigenous woman;
- co-locating office facilities for the Kimberley Social Policy Officer employed by the Department of Premier and Cabinet in response to the Gordon Inquiry, 2003, in the Commissions' Kununurra Office;
- facilitating the development of major employment opportunities to better meet the needs of young people in the future, for example:
  - the Argyle Underground Project
  - development of Stage 2 of the Ord River Irrigation Area

## **Providing for Good Governance**

### ***Staffing***

All employees are employed under that Public Sector Management Act, 2004 (PSMA). The Public Service Award, 1992 (PSA) and the Public Service General Agreement, 2004 (PSGA 2004) prescribe the conditions of employment for all staff.

The Commission's staffing, industrial policies and procedures meet the requirements of the appropriate legislation including the Public Sector Management, 2004, Equal Opportunity Act, 1984, and Occupational Safety and Health Act, 1984.

During 2003/2004 the Commission had an actual staff complement of 11 full-time equivalents (FTEs). The target FTE level for 2004/2005 is 11.

### ***Equal Employment Opportunity Outcomes***

(Equal Opportunity Act 1984, S146)

The Commission maintains and implements an *Equal Opportunity Plan* consistent with the *Equal Opportunity Act, 1984*. Our plan includes primary objectives and implementation strategies that are incorporated into the Commission's ongoing management and Human Resource Management practices. These are also detailed within our Human Resource Management Manual.

The Commissions' contribution toward the Government's Equity and Diversity Plan is increasing the diversity of its workforce which comprises twelve people including one trainee. Its' current characteristics are:

- 50% women and 50% men
- 25% Indigenous people aged less than 30
- 75% non-Indigenous people aged more than 30

**Evaluations**

*(Public Sector Management Act 1994 S7 (e))*

In compliance with the Public Sector Management Act 1994 S7 (e), the Commission has completed a Customer Survey. The Commission conducts an annual survey of key clients to seek feedback on their perceptions of the Commission's performance. Reporting on customer satisfaction with the services of the Kimberley Development Commission is included in this Annual Report under Performance Indicators on pages 43-47.

**The Corporate Plan**

The biennial Corporate planning process is consistent with the legislative responsibilities of the Commission, its mission and vision for future economic and social development in the Kimberley. A review of the Commissions achievements, matched against the ten-year development aims of the Corporate Plan 2002-2003, has recently been completed by the Board. Based on this review, a strategic direction for the next two-year period, again matched against the ten year development aims, has been agreed and will form the basis of the new Corporate Plan 2004-2005.

**Information Technology Review**

The Commission requires efficient and effective computerised information systems to achieve both its administrative and functional responsibilities. Consistent with this requirement and as the result of a recent Information Technology review, an Information Technology Plan for the whole of the Commission is being developed.

**Shared Corporate Services**

The Commission has, jointly with the Pilbara and Gascoyne Development Commissions undertaken a review of the opportunities to share corporate services between the three statutory authorities.

**Information Statement**

*(Freedom of Information Act 1992, S96-97)*

The Commission welcomes public input to assist in the formulation of policy and the performance of the agency's functions. Members of the public with an interest in regional development, and particularly the development of the Kimberley region are invited to contact Board members or Commission staff to discuss relevant issues.

The Commission holds information from various sources in working files, studies and printed reports. Information is usually provided free of charge. However, the provision of some documents and reports may require payment.

The *Freedom of Information Act 1992* provides for access to certain information held by the Commission. Applications under *the Act*, other than information requests easily satisfied by a personal visit or by telephone, should be forwarded to:

Freedom of Information Coordinator  
Kimberley Development Commission  
PO Box 620  
KUNUNURRA WA 6743

**Publications**

Current publications available to the public include:

- BHP Engineering, 1998, *Feasibility of Support Base for Offshore Oil and Gas Industry. Kimberley Region.*
- Boshe Group, 1997, *Communications Audit, – The Needs of Regional Western Australians (Kimberley Region).*
- Kimberley Development Commission, Annual Report 2000/2001\*
- Kimberley Development Commission, Annual Report 2001/2002\*
- Kimberley Development Commission, Annual Report 2002/2003\*
- Kimberley Development Commission & Department of Local Government and Regional Development, 2003, *Kimberley Economic Perspective\**
- Kimberley Development Commission, 2002, *The Kimberley Aquaculture Research Project: Part of the Development of a Black Tiger Prawn Aquaculture Industry in the Kimberley Region*
- Kimberley Development Commission, 2002, *2002/2003 Corporate Plan\**
- Kimberley Development Commission & Western Australian Tourism Commission, 2001 *West Kimberley Accommodation Needs Analysis 2001\**
- Kimberley Development Commission, 2001, *The Aboriginal Component of the Kimberley Economy\**
- Kimberley Development Commission & The University of Western Australia, 200) *An Input-Output Table for the Kimberley Region of Western Australia\**
- Kimberley Development Commission and Department of Transport, 1999, *North Kimberley Road User's Study – Final Report\**
- Kimberley Development Commission, 1999, *The Kimberley Region – Supporting Resource Development Projects*
- Kimberley Development Commission and Western Australian Tourism Commission, 1998, *East Kimberley Accommodation Needs Analysis\**
- Kimberley Development Commission, 1998, *Ord River Irrigation Area – Best Practice in Irrigated Agriculture*
- Kimberley Development Commission, 1997, *Kimberley Development Commission Economic Development Strategy 1997 – 2010*
- Kimberley Development Commission and Fisheries WA, 1996, *Kimberley Aquaculture Development Plan*

- Kimberley Development Commission, 1996, *The Economic Impact of Irrigated Agriculture in the Ord River*
- Transport WA and Kimberley Development Commission, 1997, *Kimberley Transport Towards 2020*
- WA Department of Minerals & Petroleum Resources, Commonwealth Department of Industry, Tourism & Resources, Kimberley Development Commission and Industry Contributors (2003) *Tanami-East Kimberley Regional Mineral Study*.
- Western Australian Newspaper, 2004, *Realms of Possibility Series: Kimberley Calling\**.

N:B Publications marked with an \* are available on the Kimberley Development Commission's website at [www.kimberley.wa.gov.au](http://www.kimberley.wa.gov.au).

### ***Reporting on Recordkeeping Plans***

*(State Records Act, 2000, S61 & State Records Commission Standards, Standard 2, Principle 6)*

The Commission submitted its first Recordkeeping Plan and Retention & Disposal Schedule to the Director, State Records in February 2004. Both are consistent with the State Records Act, 2000 and are awaiting final approval.

A Recordkeeping Review was conducted as an integral part of the development of the Commissions' Recordkeeping Plan in compliance with the State Records Act, 2000. Further to this review the Commission is upgrading its filing system and developing a suite of specific Recordkeeping Policies and Procedures.

All new staff are provided with an introduction to their roles and responsibilities in regard to the Commissions' compliance with the RKP as part of their induction program. A recordkeeping training program for all staff is being designed; this will be implemented and regularly reviewed in accordance with the RKP Plan.

**Compliance with Public Sector Standards and Ethical Codes***(Public Sector Management Act 1994, S31 (1))*

The Kimberley Development Commission has complied with the Public Sector Management Act and has adopted Human Resource policies and procedures consistent with the Public Sector Standards in Human Resource Management. The Human Resource Policies and Procedures, together with the Commissions' Code of Conduct and Code of Ethics are provided in the Staff Information Manual with which all staff are made aware and encouraged to become familiar.

The Chief Executive is responsible for the Commissions' compliance with the Public Sector Management Act, Code of Conduct and Code of Ethics, but all staff are required to work in accordance with the principles contained in all three documents and associated policies.

**Statement of Compliance**

In the administration of The Kimberley Development Commission, I have complied with the Public Sector Standards in Human Resource Management, the WA Public Sector Code of Ethics and our Code of Conduct.

I have put in place procedures designed to ensure such compliance and conducted appropriate internal assessments to satisfy myself that the statement made above is correct.

The applications made for breach of standards review and the corresponding outcomes for the reporting period are:

Number of applications lodged	nil
Number of breaches found, including details of multiple breaches per application	nil
Number still under review	nil

No complaints have been lodged with the Commission or external bodies that include issues relating to the Commissions' compliance with the Code of Ethics or Code of Conduct.



Jeff Gooding JP  
Chief Executive

24 August 2004

**Postal Address**

Kimberley Development Commission  
PO Box 620  
Kununurra WA 6743

**Street Address**

Kimberley Development Commission  
7 Ebony Street  
Kununurra WA 6743

**Public Interest Disclosures**

(Public Interest Disclosure Act 2003, S23 (1) (f))

In compliance with the Public Interest Disclosures Act 2003, the Commission has appointed a Senior Projects Officer as its Public Interest Disclosure Officer.

The Commission has developed internal procedures in accordance with the Act, which are consistent with the guidelines published by the Commissioner for Public Sector Standards. These are available to the Commission's staff, contractors and members of the public on request.

The Chief Executive will provide protection from detrimental action or the threat of detrimental action for any employee of the Commission who makes an appropriate disclosure of public interest information. The Commission will not tolerate any acts of victimisation or reprisal as a result of a person making, or proposing to make, a public interest disclosure.

Any victimisation or reprisals will be reported immediately to the Chief Executive or the Public Interest Disclosure Officer who will take immediate action to prevent the continuance of unlawful conduct. Where victimisation or reprisals are reported, a record of the report and the action taken will be placed on the file relating to the public interest disclosure.

Steps taken to prevent acts of victimisation or reprisal will be recorded in a manner that they will be accessible for reference should legal action be taken against the Kimberley Development Commission.

The Commission is committed to maintaining confidentiality, abiding by the Public Interest Disclosure Code of Conduct and Integrity and to maintaining comprehensive and secure records for each public interest disclosure made.

**Advertising and Sponsorship**

(Electoral Act 1907, S175ZE)

In compliance with section 175ZE of the Electoral Act 1907, the Commission is required to report on expenditure incurred during the financial year in relation to advertising agencies, market research organisations, polling organisations, direct mail organisations and media advertising organisations.

Expenditure during the period 1 July 2003 to 30 June 2004 is as follows:

<b>Expenditure with Advertising Agencies</b>	
Marketforce Productions	\$ 942
WA Local Business & Community Services P/L	\$ 395
Emergency Services Publishing WA	\$ 323
Derby Visitor Centre	\$ 273
Nationwide Business Directory	\$ 359
Shire Wyndham East Kimberley Directory	\$ 280
South West Development Commission	\$ 423
<b>Expenditure with Market Research Agencies</b>	\$ nil
<b>Expenditure with Polling Agencies</b>	\$ nil
<b>Expenditure with Direct Mail Agencies</b>	\$ nil
<b>Expenditure with Media Advertising Agencies</b>	\$ nil



## **REGIONAL DEVELOPMENT ACTIVITIES 2003/2004 – BETTER PLANNING: BETTER SERVICES**

This section of the Annual Report summarises the Commission's activities and achievements for the year 2003/2004 matched against the relevant Strategic Outcomes identified in the *Better Planning: Better Services Strategic Planning Framework for the Western Australian Public Sector*.

The activities and achievements are consistent with the ten-year development aims and major strategies identified in the Commission's Corporate Plan.

### **Enhanced Government Decision-Making based on a thorough Understanding of Regional Issues.**

This year as previously, the Commission has contributed to Government decision making from a Kimberley perspective. This has involved proposing development strategies, providing input, reviewing and commenting on a range of initiatives, local issues, draft legislation, policies and plans including but not limited to:

- Regional Air Services
- Regional Telecommunications
- Coastal Shipping
- The Regional Minerals Programme
- Kimberley Power Procurement
- Social Policy Coordination (Gordon Inquiry Response)
- Regional Migration
- Natural Resource Management Coordination (Bilateral Agreement to implement the Natural Heritage Trust)
- The WA Tourism Destination Development Strategy
- The WA State Sustainability Strategy
- The WA Sustainability Code of Practice and Guidelines
- The WA Regional Development Policy

The Commission has also played an important role, working with the State Government and the Kimberley Land Council, in the negotiation of native title issues, associated with the development of the Ord River Irrigation Area Stage 2, through a process of consultation between stakeholders. This will significantly assist the development of the horticultural and agricultural industries in the East Kimberley and increase future employment opportunities, particularly for Indigenous and young people in the region.

### **Planning in Partnership for a Sustainable Future.**

The Commission regards the integration of social, economic, environmental and cultural components of development as important to the long-term sustainability of the Kimberley. Using this approach, it has worked in partnership with the three tiers of Government, the private sector and the community, to plan and also promote success in a range of initiatives, which are summarised as follows.

***The Broome Planning Study***

In line with identifying regional needs and coordinating planning initiatives, the Commission has supported and maintained close involvement with the Broome Planning Study, which is examining the needs and planning requirements of Broome over the next 15 years.

***Sustainable Regional Tourism***

The Commission has assisted the Australia's North West Tourism Organisation to progress a comprehensive marketing and development concept for the Kimberley, the Kimberley Sustainable Tourism Project, with the objective of providing the basis for detailed industry planning for the next decade. To assist leverage Commonwealth Sustainable Regions funding the Commission has committed \$150,000 of the Kimberley Regional Development Scheme to the Kimberley Sustainable Tourism Project. The proposed sub-projects include:

- Regional tourism market research
- Regional branding and marketing
- E-commerce
- Indigenous tourism development
- Environmental and product accreditation
- Regional events coordination
- Air Services

In partnership with Tourism Western Australia (TWA) the Kimberley Development Commission has been closely involved with the amalgamation of the Kimberley and Pilbara Tourism Associations to form "Australia's North West Tourism Organisation". The Commission now accommodates the Kimberley Manager of TWA in an office co-location arrangement.

The Commission has also been involved in tourism development in Aboriginal communities on the Dampier Peninsula and the development of a Strategic Plan to gain seeding funds to establish the Argyle Homestead as an Interpretative Centre.

***Agreement with the Kimberley Land Council***

A formal agreement has been reached between the Commission and the Kimberley Land Council, endorsed by the Minister for the Kimberley, which provides for practical processes to facilitate co-operation on regional issues related to sustainable development.

***Ord Stage Two Planning***

The Commission is working to progress the development of Stage 2 of the Ord River Irrigation Area (ORIA) and is currently involved with the State Government, the Kimberley Land Council and the Miriwung Gajerrong Traditional Owners in negotiations that may lead to the release of more land for agricultural development in the future. The existing area of Stage 1 of the ORIA comprises 14,000 hectares of developed, irrigated land on which tropical horticultural crops, high value grain crops, sugar cane and sandalwood plantation timber are grown. Stage 2 of the ORIA has potential as a major employer for the young population of the East Kimberley, in addition to providing a range of skills development, training and research opportunities in tropical agriculture. In particular it may provide an opportunity to engage Indigenous people in the economic future of the region and provide scope for Indigenous enterprise development and business partnerships.

**Effective Government Service Delivery to Regions that is Responsive to the Needs of Diverse Communities.**

Consistent with its whole of government approach to project coordination, the Commission collaborated in 2003/2004 with other stakeholders in managing the following initiatives:

***Regional Air Services***

The Commission has been actively involved in regional air service issues and has participated in finalising the State Air Services Policy through the Strategic Aviation Committee, the Kimberley Aviation Tourism Development Committee and regional forums. A wide range of services is developing to service the region's needs.

Direct Qantas flights between Perth and Kununurra commenced on 1 May 2004, after a successful co-ordinated initiative between the Shire of Wyndham East Kimberley, the Kimberley Development Commission, Kimberley Tourism Association, Kununurra Chamber of Commerce and industry and tourism representatives. The service which runs on a weekly basis through to October was celebrated by industry and community at a special function held on 1 May at El Questro, that included senior Qantas and Tourism Industry Representatives.

The Commission is also working with Kimberley Local Government Authorities and other stakeholders, to explore, quantify and support the requirements for improved affordable and reliable air services, including intrastate air services into Derby and additional interstate air services into Broome.

The Commission has provided support to eligible Remote Communities to lodge their submissions, to secure funding from the Commonwealth Remote Air Services Subsidy Scheme (RASS). RASS subsidised air services provide regular deliveries of mail, educational materials, medical supplies, fresh food, urgent supplies and a passenger service to over 200 remote communities across Australia.

***Regional Minerals Programme***

In 2003/2004 the Mineral and Petroleum Industry contributed \$948.5 million to the Gross Regional Product. As part of the Regional Minerals Programme, a co-operative arrangement established in August 1996 by the Commonwealth Government, two studies have been commissioned in the Kimberley Region. One, in the East Kimberley, has been completed and the second, in the West Kimberley is in the consulting phase.

The Tanami-East Kimberley Minerals study was commissioned by the Department of Industry and Resources, on behalf of the Commonwealth Department of Industry, Tourism and Resources, the Kimberley Development Commission and several mining and exploration companies. It identifies:

- the means of increasing the level of exploration which could lead to development of new minerals production operations;
- ways to facilitate new mining developments; and
- ways to maximise the benefits to the region flowing from exploration and mining activities.

Having contributed towards the study, the Commission is now working with the Department of Industry and Resources to progress the implementation of its' recommendations, one of which is the development of a Halls Creek Mining Strategy.

The Commission is similarly supporting the West Kimberley Mineral Study which has recently commenced.

***Partnership with the Commonwealth Sustainable Regions Programme***

The Commission has continued to partner the Kimberley Sustainable Regions Programme which was established by the Commonwealth Government in 2001/2002 with an allocation of up to \$12 million over three years to each of ten discrete regions throughout Australia.

The Kimberley was the only WA Region nominated for the programme because of its economic, social and environmental opportunities and challenges. This year is the mid year of the funding program, which has seen a range of projects provided with financial assistance in accordance with the needs of the region, prioritised by a committee comprising regional stakeholders, including a number of the Commission's Board Members.

***Balgo Local Response Initiative***

A crisis situation developed in Balgo Aboriginal Community in October, which included an increased incidence of youth self harm and petrol sniffing, coupled with a declining ability to manage the situation locally.

The Commission's involvement to co-ordinate an urgent local response process, specifically targeting the requirements of youth, resulted from suggestions by the Minister for the Kimberley, the Department of Premier and Cabinet and the Department for Community Development.

Between October and March the Balgo Local Response Group worked collaboratively to secure a range of financial, human and physical resources which provided support for the young people, their families and the community in Balgo to address the crisis situation through immediate, medium and long-term strategies.

***Aboriginal Economic Development Officer***

The Commission employs an Aboriginal Economic Development Officer, under a cooperative funding arrangement with the Office of Aboriginal Economic Development, to promote Indigenous economic development and provide mentoring and encouragement of the start-up of Indigenous enterprises.

**More Skilled Regional Communities.**

Appreciating the need to strengthen the region's labour market, the Commission has participated in a range of activities to promote leadership and develop the skill base of its communities. These include:

***The Australian Rural Leadership Course***

Regional leadership development is regarded as vital for the future of Kimberley communities, and the Commission continues to be a regional support provider as well as allocating sponsorship in 2004 to the Australian Rural Leadership Course for a Kimberley person.

***WA Community Leadership Program***

This program funded by the Department of Local Government and Regional Development (DLGRD) was provided in the Kimberley through a partnership arrangement between the Department, the Commission and the four Local Government Authorities. The program objectives focussed on capacity building and creating networks whilst maximising opportunities for cross-cultural sharing and learning. The three program workshops were held locally and in Perth over a period of four months from July to October. The Commission provided sponsorship for each of the four Shires. Fifteen out of the sixteen participants, four from each Shire, completed the program.

***The Australian Institute of Company Directors' Programs***

In early 2003 the Commission sponsored the Australian Institute of Company Directors to run two one day New Directors Programs in the Kimberley, one in Broome and one in Kununurra, in which a total of 58 people participated. The workshops provided an introduction to corporate governance and the legislative responsibilities of Company Directors, Board and Management Committee Members. Further to the request of participants, the Commission will sponsor three people to participate in the five day Company Directors Program in Perth in October 2004, and will continue to sponsor the delivery of the one day New Directors' Program in 2004.

***The Regional Sponsored Migration Program***

The Commission currently assesses, for Regional Certification, between one and two nominations a month through the Regional Sponsorship Migration Scheme. The scheme is designed to allow Businesses and Organisations to nominate specified positions to which it is difficult to recruit from the local labour market. The Department of Immigration, Multicultural and Indigenous Affairs (DIMIA) relies on Regional Certifying Bodies throughout Australia to use their local knowledge to certify that each nomination under the scheme meets a number of criteria. The scheme aims to assist regional employers fill vacancies whilst ensuring that the labour market has been appropriately tested. It also aims to ensure that the employment conditions of the nominated positions are consistent with regional industry standards.

A new visa the Skilled Independent Regional Visa or "SIR" Visa, is to be introduced by DIMIA in July 2004. The SIR Visa aims to address the anticipated shortage of skilled people in regional areas of Australia over the next twenty plus years. The State Government is currently planning coordination of the SIR Visa programme at a statewide level in conjunction with Regional Development Commissions.

**Improved Regional Infrastructure.**

The Commission has worked closely with strategic partners in identifying and supporting regional infrastructure development in order to implement practical strategies for the improvement of a range of infrastructure projects in the Kimberley.

***Broome Port Jetty Extension***

The Commission has continued to work with the Broome Port Authority and key stakeholders in State, Commonwealth, and Local Government as well as industry representatives to support the extension of the Broome jetty. The Port of Broome has been planning a 148-metre extension to the Broome jetty estimated to cost \$16.8M.

This project reflects the high level of usage of the Broome Port and its potential to facilitate further export growth from throughout the Kimberley, and provide a resources base for the offshore oil and gas mining industry. The Port continues to support pearling, fishing and the overall maritime industry. In addition, large cruise ships are continuing to visit Broome as a key destination.

***Regional Telecommunications***

The critical role of improving telecommunications is important to Kimberley communities and their people, and is consistent with the Commission's Corporate Strategy to broaden the regions social and economic infrastructure

The Commission partnered with the Department of Industry and Technology's Telecommunications Needs Assessment of the Kimberley region, published in July 2003. Part of a State-wide review, the Assessment's purpose was to identify strengths and weaknesses in regional communication infrastructure with the results contributing towards the determination of priorities and developing programs to address communication needs.

During 2003/2004, the Commission assisted the Department of Industry and Resources (DoIR) in their application for funding under the Coordinated Communications Infrastructure Fund (CCIF). The scope of the project is to provide all 6 towns in the Kimberley with a wireless based broadband service and is aimed primarily at State, Local and Commonwealth Government departments, although other organisations and individuals are expected to benefit as well. Small business, government departments, Aboriginal communities and not for profit organisations all registered interest in acquiring broadband.

The Commission has committed to provide the following in relation to the implementation and management of the project:

- assistance with identifying demand requirements in the Kimberley;
- liaison with Local and State Government Agencies;
- promotional campaigns throughout the region, jointly with providers;
- assistance to the selected tenderer during infrastructure rollout.

The Commission has visited a number of remote Indigenous communities in 2003/2004 to ascertain their interest and need for multi use community centres. These centres would provide internet access as well as government services such as CentreLink and Australia Post, training and possible crèche facilities.

***Assistance for Internet Usage***

The Kimberley Development Commission has partnered with Telstra Countrywide for the joint promotion of Internet usage to the Kimberley community. The project entails the employment of an Internet Support position, with the primary role to provide advice to people wishing to connect to the Internet, or having difficulties in connecting to the Internet. The service is provided free-of-charge and available to customers irrespective of their choice of Internet Service Provider (ISP).

The Commission granted \$66,000 to assist establishment of the project.

***Coastal Shipping Service***

Close involvement has continued with relevant partners in 2003/2004 in the retention and stabilisation of the Coastal Shipping Service. This ensures that there are competing modes of transport applying downward pressure on the general freight rates that apply for the Kimberley community.

The Commission is working with the Department for Planning and Infrastructure and the shipping operator on the business case and feasibility study associated with proposals for a second vessel. The Commission supports the introduction of a second vessel to the service, based on its commercial viability. The Commission has continued to monitor the performance of the service on an ongoing basis.

**Diversified Regional Economies.**

The Commission has continued to promote, facilitate and support the development of new and emerging industries in the Kimberley.

***West Kimberley Resources Study***

In order to assist industry diversification within the mining industry, the Commission has provided financial support to the West Kimberley Resources Study, which is examining the feasibility of further exploration and mining of a range of minerals throughout the West Kimberley and of gas and petroleum in offshore areas.

The Study takes into account the resource development potential in the West Kimberley including oil and diamond fields, the Lennard Shelf lead/zinc mines, Mitchell Plateau bauxite deposits as well as the offshore Browse Basin gas fields. It examines the infrastructure and service provision needs if different levels of development were to take place in the region. The Management Committee for the Study, on which the Commission is represented, has examined the scenarios provided by the consultants and, based on their industry knowledge, identified the likelihood of each development occurring within the timeframe specified. These comments were provided for feedback to the consultants for use in the next stage of planning and consultations.

This study complements the Tanami-East Kimberley Minerals study, which was commissioned by the Department of Industry and Resources, on behalf of the Commonwealth Department of Industry, Tourism and Resources, the Kimberley Development Commission and several mining and exploration companies.

***Tourism on the Dampier Peninsula***

The Commission continues to assist the development of tourism on the Dampier Peninsula through the Kimberley Regional Development Scheme and through support activities. Main activities include tourism and development and marketing in conjunction with the development of a plan relating to public access to the Peninsula, deemed to significantly increase with the upgrading of the 200 kilometre road between Broome and the northern tip of the Dampier Peninsula. The Dampier Peninsula Access Management Plan consultancy has commenced and will outline strategies to be undertaken over the short, medium and long term to:

- minimise the potential social and cultural impact of an upgraded road system on Aboriginal communities on the Dampier Peninsula,
- minimise the potential impact on the environment generally and any environmentally and culturally sensitive areas as a result of the expected increase in visitors to the Peninsula, and
- improve benefits to Peninsula communities from tourism and recreational users, as a result of access management.

The Commission remains committed to working with stakeholders on the development of Indigenous tourism and development in general on the Dampier Peninsula.

***Argyle Diamond Mine***

Argyle Diamonds and Rio Tinto will decide in June 2005 whether to proceed with developing a mine underground and thereby extend the mine's life until 2020 and beyond, or whether to implement its closure plan in 2007.

Recognising the importance of the Underground project to the social and economic development of the East Kimberley, in June 2004 the Commission engaged with Argyle Diamonds to seek the support of those State Government Agencies with responsibilities in the East Kimberley. A series of interviews with the Agencies have confirmed support for the benefits that Underground project can bring and have identified how partnership opportunities with Argyle Diamonds will promote skills and business development in the area and have substantial flow on during and beyond the extended life of the mine should the Underground project proceed.

Argyle Diamonds, whether or not the underground project proceeds, will implement its localisation policy, which includes an increase in local employment from 33% to 80%, an increase in employment of Indigenous people from 20% to 50% by 2007 and a matching decrease in fly-in, fly-out employment. Local businesses will also be favoured for contractual work at the mine where possible. The Commission remains committed to capturing these benefits in the East Kimberley.

***Aquaculture***

In August 2001 the Commission initiated the first stages of a major research project, specific to the performance and commercialisation of black tiger prawns in the Kimberley environment. Prior to this project the functioning of this species in Kimberley conditions was technically unproven.

The Broome Tropical Aquaculture Park has since developed and commercial interests are proposing to develop a major prawn hatchery on four sites. This development is contingent upon the supply of good quality sea water at an appropriate capacity to meet the total needs of the Park and the specific requirements of a hatchery, and builds heavily on the research created by the Commission and its stakeholder partners.

***Savannah Way Tourist Drive***

The Savannah Way is a tourism themed route crossing the 'top end' roads of the three states of Queensland, Northern Territory and Western Australia. The concept arose due to sustained, continued growth of long haul and self-drive visitors to the northern areas of Australia, and the demand to see natural and cultural attractions.

The Commission is a partner in the development of the Savannah Way with Tourism WA as the lead agency in the implementation of the project. The Savannah Way was officially opened in July 2004, and will enhance information available for travellers on "top end" roads through northern Australia.



**Enhanced Regional Investment.**

The Commission has facilitated development and investment through the promotion of the region.

***Regional Investment Tour***

The sixth Regional Investment Tour (RIT) for Western Australia took place on 24-28 October 2003. A total of 18 investment ready projects were presented to the group, including invitations to fund new proposals in aquaculture, mining (including oil, diamonds and platinum), horticulture and tourism development projects.

In an effort to ensure that potential projects and presenters had ample opportunity to identify themselves as potential proponents and commit to a presentation during the RIT, Commission and DLGRD staff travelled across the region during August 2003, advising stakeholders of the potential available in attracting significant funding for projects.

***Kimberley Business Bulletin***

During 2003/2004 the Commission continued support for the Kimberley Business Bulletin, a regionally focussed magazine promoting the Kimberley as a business centre. The magazine disseminates information on resource exploration activity, Government support structures for business development, development of Indigenous business initiatives, identified areas of potential for development, research projects and studies on the region, and export developments and opportunities.

The Commission has supported the production of the magazine since its inception in 2001, and is a representative on the Bulletin's Steering Committee providing input to editorial and other relevant information for the magazine. The Bulletin is widely distributed nationally, targeting prospective development investors from outside the region, as well as other regional, local and government interests. The Commission makes use of every opportunity to distribute the Kimberley Business Bulletin to as wide an audience as possible.

***Indigenous Stock Exchange***

The ISX strategy was initiated in May 2003 and has conducted three "trading floors" to date, in Canberra, Mossman in North Queensland and in Broome. The Kimberley Development Commission provided financial support towards the cost of operating the Yawuru trading floor in Broome.

The "trading floor" concept involves indigenous groups, individuals or businesses over the course of one day presenting a case for financial and/or mentoring support through an 'on-line' program. The Yawuru Trading Floor was conducted by 'face to face' activity locally, complemented by non-Broome participants in Sydney, Melbourne and by other nominated Indigenous organisations around the country linked via video conference and web cast at the Goolarri studios in Broome.

The ISX initiative has the potential to provide developing indigenous enterprises with both financial assistance and expertise through its mentoring opportunities.

***Realms of Possibility***

In 2004 the Commission contributed both financially and organisationally to the 'Realms of Possibility' newspaper lift-out entitled *Kimberley Dreaming*, which was published state wide through the West Australian Newspaper. The publication, as with the first edition, used the 'voices' of regional people to discuss issues of social, cultural and economic importance specific to the Kimberley.

The newspaper lift out was prepared in 2003/2004 and was printed in July 2004. It featured articles on businesses, regional developments, services, and leisure in the Kimberley and interviewed a number of people in different Kimberley locations. This was the fourth promotion of this type in which the Commission has participated. Industry and community feedback on the publication indicates strong support for this mode of regional promotion.

***Kimberley Economic Perspective 2003 Publication***

The bi-annual Kimberley Economic Perspective was up-dated and published in May 2003, providing key data to guide investment considerations and business development in the Kimberley. The publication provides the latest statistical profile and analysis of indicators such as employment levels, demographics, major industry sectors, exports, tourism and infrastructure for the region. The Economic Perspective is published biennially but is used by a range of clients throughout the two years between updates.

The Economic Perspective on the Commission's website at [www.kimberley.wa.gov.au](http://www.kimberley.wa.gov.au).

***TradeStart***

The Commission has extended its agreement with Austrade to continue to deliver TradeStart services for the next two years. Services provided include sourcing new exporters and assessing their export readiness. As at 30 June 2004, three New Exporters have been signed up to the New Exporters Development Scheme. New Exporter Seminars are planned for Broome, Derby and Kununurra during 2004.

***Lifelong Learning in the Regions.***

The Commission is committed to promoting lifelong learning in the regions with the aim of broadening the social and economic infrastructure of the Kimberley.

***Traineeships and Apprenticeships***

In addition to leadership training described under strategic outcome 4, "More Skilled Regional Communities", the Commission readily promotes initiatives which have the potential to increase skills development in the region including:

- providing, in partnership with Kimberley Group Training, one traineeship position each year;
- promoting the benefits of Argyle Diamonds' localisation policy which over a five year period includes providing 150 traineeships and apprenticeships;

***On-line Learning***

The Commission has focussed on internet access issues throughout the Kimberley for many years, not only to promote industry but also on-line learning and education opportunities. This is especially important because of the remoteness of the region and the reduced access to nearby tertiary education opportunities.

This year the Commission collaborated with the Department of Industry and Resources (DoIR) to support the Future Skilling Outback WA project which aims to deliver IT training and technical support to very remote regions of the Kimberley and Western Australia. The strategy will establish a framework of delivery to very remote communities, particularly Aboriginal communities, where training such as this is unlikely to be available.

Consistent with its support for the Future Skilling Outback WA project, the Commission has supported the Kimberley College of TAFE's application for assistance for the "Kimberley Komputer Drivers Licence Project" which aims to assist people in remote communities to complete the theoretical component of their Drivers Licence.

**Effective Health Service Delivery.**

The Commission views the provision of efficient transport, telecommunications and essential services as crucial to the delivery of health services and that improving the social determinants of health through increasing the opportunities for education, employment and economic participation can have positive outcomes for people's health and well being. In this context the Commission has focussed and will continue to focus on increasing opportunities and enhancing services and infrastructure that indirectly improve the health of people across the Kimberley.

The Commission aims to assist the development of health services by supporting increased access to innovative communication technology and reliable means of transport thus enabling wider access to specialist services and primary health care.

The equitable provision of these services, especially to remote Indigenous communities, is a key consideration given the substantial challenges of providing high quality, accessible and appropriate services to the geographically dispersed and diverse population of the Kimberley.

***District Health Advisory Councils***

The Commission participated in the establishment of the five new District Health Advisory Councils, servicing Derby and communities, Broome and communities, Fitzroy Valley, Halls Creek and communities, Wyndham / Kununurra and communities. District Health Advisory Councils provide ongoing input into setting local priorities for health services.

**Enhanced Quality of Regional Lifestyles.**

The Commission aims to monitor and promote the equitable delivery of services and the development of physical and social infrastructure in the region.

***Derby Revitalisation Project***

The Derby Revitalisation Project is a community project that aims to engage the local community in developing physical and social infrastructure and increasing participation in social, economic, environmental and cultural life in the town and surrounding area. There are three separate areas of engagement covering mainstream, youth and Indigenous people.

The Commission has been closely involved in facilitating the project and has provided financial assistance to two aspects of the overall project – Small Town Renewal and the Youth Consultation Strategy.

Elements of the project identified to date include a new visitor / outback heritage / arts centre, wharf precinct enhancement, women's leadership forum, the Derby tramway project, and a community newspaper. Indigenous projects are still being identified. In addition the Commission has been assisting the Shire of Derby-West Kimberley in the development of a business case for the upgrading of the Derby wharf.

The Commission has provided financial and other support to the development of the Mowanjum Art Centre located at the Mowanjum community. The Mowanjum community is located 20 kilometres outside of Derby on the Gibb River Road and it is expected that the Art Centre will promote the art of the community and attract visitors both to the Art Centre and to Derby.

***Fitzroy Crossing Community Resource Centre***

The Commission has engaged with the Shire of Derby/West Kimberley and the Fitzroy Crossing community, supporting service providers and Government agencies in the planning for the development of a Community Resource Centre at Fitzroy Crossing.

Concept designs for the Centre were completed in November 2003 and in March 2004, consultants were appointed to prepare a business plan, which should be completed by mid September 2004. The Working Group for the Centre, on which the Commission is represented, is discussing the possibility that Bunuba Inc., under a separate entity, manage the facility once it is established.

The Commission is continuing to work with stakeholders to assess and advocate for funding opportunities.

***Wyndham Community Resource Centre***

During 2002/2003 the Shire of Wyndham/East Kimberley adopted a Strategic Plan for the Wyndham Community Resource Centre. Plans for the development of the Wyndham CRC initially involved new infrastructure, but high infrastructure costs, limited population growth and lack of government agencies have resulted in the existing Shire administration building being remodelling to function as a CRC. The Commission continues to monitor the progress of the project, with a view to providing support as required.

***Halls Creek Aquatic and Recreation Centre***

The Commission has provided financial assistance towards the development of the Halls Creek Aquatic and Recreation Centre through the Shire of Halls Creek. The eight objectives of the project focus on improving recreational opportunities for the Halls Creek community, especially the youth of the area, with the key objective being to “attempt to help reduce alcohol, drug and substance abuse in the area”. Other objectives also provide a strong focus on community development through improving health, reducing truancy, crime and vandalism, offering employment opportunities and encouraging visitors to stay longer in the area. The median age for the Shire is 22.3, which suggests that there would be a high usage of the facility.

***Kununurra Community Centre***

The Commission has allocated funds towards the cost of a feasibility study and business plan for the development of the Kununurra Community Centre under the Kimberley Regional Development Scheme for 2003/2004.

***Festivals and Tours***

Financial assistance has been provided to:

- Bring festivals to Kimberley towns and communities
- Support local festivals and particularly the participation of young people in those festivals.

The Commission has provided funding of

- \$25,000 to assist the Perth International Arts Festival towards extending the festival across the Kimberley into Kununurra;
- \$14,182 for Derby youth to participate in the Perth International Arts Festival 2004;
- \$29,850 towards the 2004 Derby Croc Festival for Kimberley youth; and
- \$4,000 to the Boab Festival Committee for regional activity and to support local initiatives.

***Kalumburu Museum, Interpretative, Arts Centre***

The Commission allocated \$12,500 towards a Feasibility Study and Strategic Plan for Kalumburu Aboriginal Corporation’s Museum, Interpretive Centre and Art Centre. The intention of the community is to develop this centre to both capitalise on the commercial potential of increasing tourism visitors (currently in the vicinity of 10,000 per year) and to preserve the historical and cultural integrity of Kalumburu and the Kwini people in a sustainable manner.

**Sustainable Natural Resource Management.**

The recently appointed Natural Resource Management Strategist for the Kimberley is co-located in the Commissions’ Kununurra office. The Kimberley NRM Strategist is, in consultation with a range of government, agency and community stakeholders developing the Kimberley sub-regional component of the WA Natural Resource Management Strategy. This twelve month process is part of the bilateral Agreement between the Commonwealth and the States and Territories, to implement the Natural Heritage Trust. The development of the Kimberley component of the State Strategy is an important process that aims to safeguard the integrity of our natural resource assets for the future.

The Commission is also represented on the Interim Natural Resource Management Group for the Kimberley. This together with the co-location arrangement has been advantageous in ensuring an integrated approach to regional development and natural resource management.

**KIMBERLEY REGIONAL DEVELOPMENT SCHEME**

The Kimberley Development Commission administers the Kimberley Regional Development Scheme. The Commission's board makes recommendations to the Minister, based on the project's ability to address regional priorities including investment attraction and creating employment opportunities; infrastructure development; community, youth and new industry initiatives; and support for indigenous groups and/or economic equity. Below is a list of the projects funded under the Kimberley Regional Development Scheme for 2003/2004.

Grant Recipient	Purpose of Grant	Amount Approved
Boab Festival at Derby	Boab Festival Development Program	\$4,000.00
Kimberley Interpreting Service	Professional development for Interpreters & Users of Interpreters	\$26,588.00
Kimberley Land Council	Developing Indigenous Industries based on sustainable wild harvest of plant and animal resources	\$25,000.00
Kununurra Community Centre Steering Committee	Feasibility and Business Plan for the development of the Kununurra community centre	\$9,100.00
Kununurra Progress Association	Kununurra Progress Association Business/Strategic Plan	\$2,500.00
Mamabulanjin Aboriginal Corporation	Indigenous Tourism Improvements & Promotion - Broome Environs	\$33,250.00
Shire of Derby/West Kimberley	Croc Festival Derby 2004	\$29,850.00
Shire of Derby/West Kimberley	Derby Youth in Perth International Arts Festival	\$14,181.82
Shire of Wyndham/East Kimberley	Implementation Plan for the management, use and development of Lake Kununurra foreshore	\$5,000.00
Shire of Wyndham/East Kimberley	East Kimberley Regional Airport Upgrade	\$47,500.00
The UWA Perth International Arts Festival	2005 Kimberley Program	\$25,000.00
West Australian Newspaper Ltd	Realms of Possibility Feature	\$9,000.00
Department of Industry and Resources	West Kimberley Resource Development Study	\$5,000.00
Dept of Local Gov & Regional Development	Part Sponsorship of a Kimberley candidate in the Australian Rural Leadership Course.	\$6,000.00
Pastoralists and Graziers Association	Support of \$5000 for running the conference and \$5000 to maximise the participation of Indigenous pastoralists in the Conference	\$10,000.00
Department of Agriculture	Corporate governance capacity building events	\$8,000.00

Grant Recipient	Purpose of Grant	Amount Approved
Balkanu Development Corporation Pty Ltd	Indigenous Stock Exchange - Yawuru Trading Floor	\$10,000.00
Kalumburu Aboriginal Corporation	Museum/Interpretive Centre/Art Centre	\$12,500.00
Kids Science State Sci-Tech	Delivering Sci-Tech Road Shows to remote communities in May 2004	\$6,000.00
Shire of Halls Creek	Halls Creek Aquatic and Recreation Centre	\$50,000.00
Ricky Grace - ArmTour WA 2004	Modelling healthy lifestyles and bring connectedness to isolated communities	\$10,000.00
Shire of Halls Creek	Evaluation and development of a model for the delivery of municipal services to communities in the Halls Creek Shire	\$15,000.00
Derby Visitors Centre	Tourism North West Visitor Servicing Conference	\$2,500.00

**KIMBERLEY DEVELOPMENT COMMISSION ASSISTED PROJECTS**

In addition to the Kimberley Regional Development Scheme, the Commission allocated \$35,118 to the projects listed below.

Grant Recipient	Purpose of Grant	Grant Amount Approved
Country Arts WA Inc	Regional Arts Dev - Karratha	\$5,000.00
Shire of Broome	Mango Festival	\$3,000.00
Wirrimanu Aboriginal Corporation	Building Corporate Governance	\$1,318.00
Kimberley Language Resource Centre	Attend LILC Conference	\$2,300.00
Broome Port Users Group	Feasibility for the Broome slipway	\$5,000.00
Kimberley Cleanup	Gibb River Road	\$2,000.00
Kimberley Land Council	25th Anniversary Celebrations	\$3,000.00
Jardamu Womens Group	Jardamu Work/Life Skills Centre	\$8,000.00
Burrinunga Aboriginal Corporation	Contribution to Corporation Management Plan	\$3,000.00
Perth International Arts Festival	Contribution towards PIAF Kimberley Indigenous Art CAT Bus Advertising	\$2,500.00



**KIMBERLEY DEVELOPMENT COMMISSION**

**CERTIFICATION OF PERFORMANCE INDICATORS FOR THE YEAR ENDED 30  
JUNE 2004**

We hereby certify that the performance indicators are based on proper records, are relevant and appropriate for assisting users to assess the Kimberley Development Commission and fairly represent the performance of the Commission for the financial year ended 30 June 2003.



Patrick Dodson  
Chairperson

27 August 2004



Jeff Gooding, JP  
Member of Accountable Authority

24 August 2004

---

OPINION OF AUDITOR GENERAL (PERFORMANCE INDICATORS)



AUDITOR GENERAL

**INDEPENDENT AUDIT OPINION**

**To the Parliament of Western Australia**

**KIMBERLEY DEVELOPMENT COMMISSION  
PERFORMANCE INDICATORS FOR THE YEAR ENDED JUNE 30, 2004**

**Audit Opinion**

In my opinion, the key effectiveness and efficiency performance indicators of the Kimberley Development Commission are relevant and appropriate to help users assess the Commission's performance and fairly represent the indicated performance for the year ended June 30, 2004.

**Scope**

***The Commission's Role***

The Commission is responsible for developing and maintaining proper records and systems for preparing performance indicators.

The performance indicators consist of key indicators of effectiveness and efficiency.

***Summary of my Role***

As required by the Financial Administration and Audit Act 1985, I have independently audited the performance indicators to express an opinion on them. This was done by looking at a sample of the evidence.

An audit does not guarantee that every amount and disclosure in the performance indicators is error free, nor does it examine all evidence and every transaction. However, my audit procedures should identify errors or omissions significant enough to adversely affect the decisions of users of the performance indicators.

A handwritten signature in black ink, appearing to read 'D D R Pearson'.

D D R PEARSON  
AUDITOR GENERAL  
October 29, 2004

---

## PERFORMANCE INDICATORS

As required by Treasurer's Instruction 904, the Kimberley Development Commission has prepared key performance indicators for efficiency and effectiveness. Measuring performance permits Program Managers, public officials, and citizens to assess the outputs of the Kimberley Development Commission.

The Government's desired outcome from the activities of the Kimberley Development Commission is:

***“An environment conducive to the balanced economic and social development of the Kimberley Region.”***

To achieve the Government's desired outcome and to achieve our mission, the Kimberley Development Commission utilises two outputs to deliver project services to our customers. They are:

- Policies, strategies, plans and regional promotion
- Industry and infrastructure identification, coordination and development

This is the Kimberley Development Commission's sixth report on Key Efficiency and Effectiveness Indicators under Output Based Management. Comparative information has been included.

### KEY PERFORMANCE INDICATOR OF EFFECTIVENESS – CUSTOMER SURVEY RATING

Each year the Kimberley Development Commission conducts a survey of its customers. The Commission uses the survey results to monitor its level of customer service and simultaneously support its key performance indicators. The customer survey measures customer satisfaction with a variety of elements of the Commission's service, including the effectiveness of the Commission in meeting seven different performance indicator outcomes.

Patterson Market Research (PMR) was commissioned to complete the client survey on the Commission's behalf for the 2003/2004 financial year. In order to maintain consistency in measuring the key performance indicators, the questionnaire for this year's survey was the same as that used in previous years. This enables the Commission's performance in effectiveness to be measured and compared with previous years.

#### ***Respondent Profile***

This year's customer survey was completed by 119 respondents from metropolitan (38%) and regional (57%) Western Australia. The Commission provided PMR with a list of 158 clients of which the sample group of 119, provides a maximum survey error of +/-4.5% at the 95% confidence level.

Of the respondents 44% were in the State Government Sector, 28% in the Private Sector and 17% were in Community Organisations. The most common industry category that respondents principally operated in were “General Government / Public Administration / Defence” (24%) and “Other Community Services” (21%). In addition, 13% operated within the “Tourism Industry”, 9% in “Mining”, 9% within “Transport and Storage” and 8% within “Commerce”.

The respondents had various levels of contact with the Commission; 44% had monthly, 28% daily/weekly and 24% had contact twice a year or less.

**Effectiveness Indicator 1**

The extent to which the Commission is assessed by its clients as a reliable and accessible source of information and advice on the Kimberley region and regional development issues.

The provision of quality information is an important component of the Commission's activities. Survey respondents were asked to indicate whether they believed the Commission was a reliable source of information and advice on regional development issues. The table below provides the last four years' results for this outcome.

In 2003/2004 similarly to previous years the majority of respondents (96%) agreed that the Commission was a reliable source of information with only 3% disagreeing. Consistent with the last three years, no customer 'strongly disagreed'. The overall results for this outcome indicate a consistent, slightly upward, trend over the last four years.

	<b>Strongly Agree (%)</b>	<b>Agree (%)</b>	<b>Disagree (%)</b>	<b>Strongly Disagree (%)</b>	<b>Don't Know (%)</b>	<b>Total (%)</b>
<b>2000/01</b>	46	42	7	0	5	100
<b>2001/02</b>	48	48	1	0	3	100
<b>2002/03</b>	62	32	4	0	2	100
<b>2003/04</b>	51	45	3	0	2	100

The section of the report seeking respondent views on 'staff provide professional and helpful service' once again resulted in a positive response with 95% indicating they 'agree' or 'strongly agree' that Commission staff provided professional and helpful advice. This is slightly less than the exceptionally high result of 99% for 2002/2003, but nevertheless indicates a consistent high standard in the Commissions customer service.

***Effectiveness Indicator 2***

The Kimberley Development Commission is effective and makes a positive contribution to economic and social development in the Kimberley

The survey results illustrate that the perceived effectiveness of the Commission in contributing to the economic and social development in the Kimberley continues to be high with positive response ratings reaching 91%. Only 5% of respondents disagreed that the Commissions contribution in this area was positive. Fewer respondents (4%) than previous years were indecisive. The overall result in this area is consistent with the high standard achieved in the last three years.

	<b>Strongly Agree (%)</b>	<b>Agree (%)</b>	<b>Disagree (%)</b>	<b>Strongly Disagree (%)</b>	<b>Don't Know (%)</b>	<b>Total (%)</b>
<b>2000/01</b>	38	47	6	2	7	100
<b>2001/02</b>	51	43	1	0	5	100
<b>2002/03</b>	46	44	4	0	6	100
<b>2003/2004</b>	42	49	4	1	4	100

## REPORT ON OPERATIONS - OUTCOMES, OUTPUTS AND PERFORMANCE INFORMATION

### **OUTCOME:** *An environment conducive to the balanced economic and social development of the Kimberley region*

The Kimberley Development Commission has developed output indicators that reflect our performance in terms of direct hours attributable to the various projects that make up our outputs and the cost of those hours on an accrual basis. We have also surveyed our key clients in order to assess our success in being able to deliver outputs of quality and on a timely basis. Following are the two categories of outputs and the level of success the Commission has achieved in each of the targeted performance levels for the year 2003/2004.

### **OUTPUT 1: POLICIES, STRATEGIES, PLANS AND REGIONAL PROMOTION**

#### **Output Description:**

*The Commission will provide effective regional development policies and strategies together with accurate and accessible information on the region to facilitate and support the economic and social development of the region.*

#### **Output Measures**

	<b>2003-04 Target</b>	<b>2003-04 Result</b>	<b>Reason for Significant variation between target and result</b>
<b>Quantity</b> Total Project Hours	3,871	5,259	??
<b>Quality</b> Favourable response from survey of key clients	90%	83%	<b>Policies, Strategies, Plans</b> Slight increase (1%) over the 2002/03 year
		75%	<b>Regional Promotion</b> A decrease of 10% over the 2002/03 year, with 20% "Don't know" responses. This will be addressed by the Commission.
<b>Timeliness</b> Favourable response from survey of key clients	90%	83%	<b>Policies, Strategies, Plans</b> Slight increase (1%) over the 2002/03 year
		75%	<b>Regional Promotion</b> An decrease of 10% over the 2002/03 year, with 20% "Don't know" responses. This will be addressed by the Commission
<b>Cost</b> Average cost per project hour	235	209	??

**OUTPUT 2: INDUSTRY AND INFRASTRUCTURE IDENTIFICATION, COORDINATION AND DEVELOPMENT**

**Output Description:**

*The Commission will identify, coordinate and promote through its major strategies, the establishment, improvement and diversification of the region's infrastructure, industries and enterprises.*

**Output Measures**

	<b>2003-04 Target</b>	<b>2003-04 Result</b>	<b>Reason for Significant variation between target and result</b>
<b>Quantity</b> Total Project Hours	5,806	3,694	The variation between target and result project hours is largely due to the loss of project hours as the result of staff shortages. Vacant positions have now been filled.
<b>Quality</b> Favourable response from survey of critical stakeholders	90%	77%	<b>Infrastructure, Planning and Development</b> No change from the 2002/03 year.
		78%	<b>Industry and Development Activities</b> Increase of 4% over the 2002/03 year
<b>Timeliness</b> Favourable response from survey of critical stakeholders	90%	77%	<b>Infrastructure, Planning and Development</b> No change from the 2002/03 year.
		78%	<b>Industry and Development Activities</b> An increase of 4% over the 2002/03 year.
<b>Cost</b> Cost per project hour	234	209	

## Key Performance Indicators of Efficiency

The efficiency indicators for the outputs are calculated by the cost of the projects divided by the number of project hours undertaken.

### Efficiency Indicators

#### Output 1: Policies, strategies, plans and regional promotion

	2004	2003	Variance	2002
Total Operating Cost	1,098,676	761,675	44%	618,924
Number of Project Hours	5,259	5,034	5%	4,673
Cost per Project Hour	209	151	38%	132
Policies, strategies, plans and regional promotion represented 59% of the total cost of outputs for the 2003/04 year.				

#### Output 2: Industry and infrastructure identification, coordination and development

	2004	2003	Variance	2002
Total Operating Cost	771,730	850,597	(9%)	1,112,459
Number of Project Hours	3,694	5,622	(34%)	8,403
Cost per Project Hour	209	153	37%	132
Industry and infrastructure identification, coordination and development represented 41% of the total cost of outputs for the 2003/04 year.				



---

**KIMBERLEY DEVELOPMENT COMMISSION**  
**CERTIFICATION OF FINANCIAL STATEMENTS**  
**FOR THE YEAR ENDED 30 JUNE 2004**

The accompanying financial statements of the Kimberley Development Commission have been prepared in compliance with the provisions of the Financial Administration and Audit Act 1985 from proper accounts and records to present fairly the financial transactions for the year ending 30 June 2004 and the financial position as at 30 June 2004.

At the date of signing we are not aware of any circumstances that would render the particulars included in the financial statements misleading or inaccurate.



Patrick Dodson  
Chairperson

27 August 2004



Jeff Gooding, JP  
Member of Accountable Authority  
24 August 2004



Terry Criddle  
Principal Accounting Officer

24 August 2004

---

OPINION OF THE AUDITOR GENERAL (FINANCIAL STATEMENTS)



**AUDITOR GENERAL**

**INDEPENDENT AUDIT OPINION**

**To the Parliament of Western Australia**

**KIMBERLEY DEVELOPMENT COMMISSION  
FINANCIAL STATEMENTS FOR THE YEAR ENDED JUNE 30, 204**

**Audit Opinion**

In my opinion,

- (i) the controls exercised by the Kimberley Development Commission provide reasonable assurance that the receipt, expenditure and investment of moneys, the acquisition and disposal of property, and the incurring of liabilities have been in accordance with legislative provisions; and
- (ii) the financial statements are based on proper accounts and present fairly in accordance with applicable Accounting Standards and other mandatory professional reporting requirements in Australia and the Treasurer's Instructions, the financial position of the Commission at June 30, 204 and its financial performance and cash flows for the year ended on that date.

**Scope**

***The Commission's Role***

The Commission is responsible for keeping proper accounts and maintaining adequate systems of internal control, preparing the financial statements, and complying with the Financial Administration and Audit Act 1985 (the Act) and other relevant written law.

The financial statements consist of the Statement of Financial Performance, Statement of Financial Position, Statement of Cash Flows and the Notes to the Financial Statements.

***Summary of my Role***

As required by the Act, I have independently audited the accounts and financial statements to express an opinion on the controls and financial statements. This was done by looking at a sample of the evidence.

An audit does not guarantee that every amount and disclosure in the financial statements is error free. The term "reasonable assurance" recognises that an audit does not examine all evidence and every transaction. However, my audit procedures should identify errors or omissions significant enough to adversely affect the decisions of users of the financial statements.

A handwritten signature in black ink, appearing to read 'D D R Pearson'.

**D D R PEARSON  
AUDITOR GENERAL  
October 29, 2004**

**FINANCIAL STATEMENTS**

**KIMBERLEY DEVELOPMENT COMMISSION  
STATEMENT OF FINANCIAL PERFORMANCE  
FOR THE YEAR ENDED 30 JUNE 2004**

	NOTES	2003/04	2002/03
<b>COST OF SERVICES</b>		\$	\$
<b>Expenses from Ordinary Activities</b>			
Employee expenses	2	1,030,315	935,615
Depreciation expenses	3	39,752	38,940
Grants and Subsidies	4	260,149	117,182
Administration expenses	5	166,827	146,760
Accommodation expenses	6	127,260	90,665
Supplies and services	7	167,387	204,301
Capital User Charge	8	59,448	56,480
Board remuneration and allowances		19,465	22,329
<b>Total cost of services</b>		<b>1,870,603</b>	<b>1,612,272</b>
<b>Revenues from ordinary activities</b>			
<i>Revenue from Operating Activities</i>			
Grants and Subsidies	9	579,658	708,868
<i>Revenue from Non Operating Activities</i>			
Other Revenues from Ordinary Activities	10	44,404	55,322
Profit from disposal of non-current assets		0	2,000
<b>Total revenues from ordinary activities</b>		<b>624,062</b>	<b>766,190</b>
<b>NET COST OF SERVICES</b>		<b>1,246,541</b>	<b>846,082</b>
<b>REVENUES FROM STATE GOVERNMENT</b>			
Output appropriation	11	1,523,000	1,273,500
Resources received free of charge	11	4,311	13,500
<b>Total revenues from State Government</b>		<b>1,527,311</b>	<b>1,287,000</b>
<b>CHANGE IN NET ASSETS</b>		<b>280,770</b>	<b>440,918</b>

The Statement of Financial Performance should be read in conjunction with the accompanying notes.

**KIMBERLEY DEVELOPMENT COMMISSION  
STATEMENT OF FINANCIAL POSITION AT 30 JUNE 2004**

	NOTES	2003/04	2002/03
		\$	\$
<b>CURRENT ASSETS</b>			
Cash Assets		482,205	857,634
Restricted cash assets	12	926,220	75,000
Receivables	13	10,964	116,298
Amounts receivable for outputs	14	40,000	58,000
Other assets	15	20,264	2,826
<b>Total current assets</b>		<b>1,479,653</b>	<b>1,109,758</b>
<b>NON-CURRENT ASSETS</b>			
Plant and equipment	16	211,468	88,323
<b>Total non-current assets</b>		<b>211,468</b>	<b>88,323</b>
<b>Total assets</b>		<b>1,691,121</b>	<b>1,198,081</b>
<b>CURRENT LIABILITIES</b>			
Payables	17	89,623	36,126
Other liabilities	18	117,199	18,800
Provisions	19	155,608	108,873
<b>Total current liabilities</b>		<b>362,430</b>	<b>163,799</b>
<b>NON-CURRENT LIABILITIES</b>			
Provisions	19	44,665	45,027
<b>Total non-current liabilities</b>		<b>44,665</b>	<b>45,027</b>
<b>Total liabilities</b>		<b>407,095</b>	<b>208,826</b>
<b>NET ASSETS</b>		<b>1,284,026</b>	<b>989,255</b>
<b>EQUITY</b>			
Contributed equity	20	44,000	30,000
Accumulated surplus/(deficiency)		1,240,026	959,255
<b>TOTAL EQUITY</b>		<b>1,284,026</b>	<b>989,255</b>

The Statement of Financial Position should be read in conjunction with the accompanying notes.

**KIMBERLEY DEVELOPMENT COMMISSION  
STATEMENT OF CASH FLOWS  
FOR THE YEAR ENDED 30 JUNE 2004**

	NOTES	2003/04	2002/03
		\$	\$
		Inflows	Inflows
		(Outflows)	(Outflows)
<b>CASH FLOWS FROM STATE GOVERNMENT</b>			
Output appropriations		1,523,000	1,229,500
Capital contributions		14,000	0
<b>Net cash provided by Government</b>		<b>1,537,000</b>	<b>1,254,500</b>
<b>Utilised as follows:</b>			
<b>CASH FLOWS FROM OPERATING ACTIVITIES</b>			
<b>Payments</b>			
Supplies and services		(716,273)	(586,557)
Employee costs		(922,707)	(876,393)
Superannuation		(57,069)	(51,753)
Capital User Charge		0	(56,480)
GST payments on purchases		(85,751)	(68,114)
GST payments to taxation authority		(22,285)	(9,294)
<b>Receipts</b>			
Other receipts		89,613	44,433
GST receipts from sales		21,255	17,307
GST receipts from taxation authority		84,454	63,378
Grants and subsidies		640,908	628,868
<b>Net cash used in operating activities</b>		<b>(967,855)</b>	<b>(894,605)</b>
<b>CASH FLOWS FROM INVESTING ACTIVITIES</b>			
Proceeds from the sale non current physical assets		0	2,000
Payments for non-current physical assets		(143,354)	(26,410)
<b>Net cash used in investing activities</b>		<b>(143,354)</b>	<b>(24,410)</b>
<b>Net increase/(decrease) in cash held</b>		425,791	335,485
Cash assets at the beginning of the financial year		932,634	597,149
<b>CASH ASSETS AT THE END OF THE FINANCIAL YEAR</b>	21(a)	<b>1,408,425</b>	<b>932,634</b>

The Statement of Cash Flows should be read in conjunction with the accompanying notes.

---

## **KIMBERLEY DEVELOPMENT COMMISSION**

### **Notes to the Financial Statements**

#### **For the year ended 30 June 2004**

#### **1. Significant accounting policies**

The following accounting policies have been adopted in the preparation of the financial statements. Unless otherwise stated these policies are consistent with those adopted in the previous year.

##### **General statement**

The financial statements constitute a general-purpose financial report, which has been prepared in accordance with Accounting Standards, Statements of Accounting Concepts and other authoritative pronouncements of the Australian Accounting Standards Board and Urgent Issues Group (UIG) Consensus Views as applied by the Treasurer's Instructions. Several of these are modified by the Treasurer's Instructions to vary application, disclosure, format and wording. The Financial Administration and Audit Act and the Treasurer's Instructions are legislative provisions governing the preparation of financial statements and take precedence over Accounting Standards, Statements of Accounting Concepts and other authoritative pronouncements of the Australian Accounting Standards Board and UIG Consensus Views. The modifications are intended to fulfil the requirements of general application to the public sector together with the need for greater disclosure and also to satisfy accountability requirements.

If any such modification has a material or significant financial effect upon the reported results, details of that modification and where practicable, the resulting financial effect, are disclosed in individual notes to these financial statements.

The statements have been prepared on the accrual basis of accounting using the historical cost convention, except for certain assets and liabilities, which, as noted, are measured at fair value.

##### **(a) Output appropriations**

Output Appropriations are recognised as revenues in the period in which the Commission gains control of the appropriated funds. The Commission gains control of the appropriated funds at the time those funds are deposited into the Commission's bank account or credited to the holding account held at the Department of Treasury and Finance.

##### **(b) Contributed equity**

Under UIG 38 "Contributions by Owners Made to Wholly-Owned Public Sector Entities" the Government (owners) must designate transfers in the nature of equity contributions as contributions by owners (at the time of, or prior to transfer), before such transfers can be recognised as equity contributions in the financial statements. Capital contributions (appropriations) have been designated as contributions by owners and have been credited directly to Contributed Equity in the Statement of Financial Performance Position. All other transfers have been recognised in the Statement of Financial Performance. Capital appropriations, which are repayable to the Treasurer, are recognised as liabilities.

---

**KIMBERLEY DEVELOPMENT COMMISSION**

**Notes to the Financial Statements for the year ended 30 June 2004 (continued)**

**(c) Grants and other contributions**

Grants, donations, gifts and other non-reciprocal contributions are recognised as revenue when the Commission obtains control over the assets comprising the contributions. Control is normally obtained upon their receipt.

Contributions are recognised at their fair value. Contributions of services are only recognised when a fair value can be reliably determined and the services would be purchased if not donated.

**(d) Revenue recognition**

Revenue from the sales of goods and disposal of other assets and the rendering of services is recognised when the Commission has passed control of the goods or other assets or delivery of the service to the customer.

**(e) Acquisition of assets**

The cost method of accounting is used for all acquisitions of assets. Cost is measured as the fair value of the assets given up or liabilities undertaken at the date of acquisition plus incidental costs directly attributable to the acquisition.

Assets acquired at no cost or for nominal consideration, are initially recognised at their fair value at the date of acquisition.

Assets costing less than \$1,000 are expensed in the year of acquisition other than where they form part of a group of similar items which are significant in total.

**(f) Depreciation of non-current assets**

All non-current assets having a limited life are systematically depreciated over their useful lives in a manner that reflects the consumption of their future economic benefits. Depreciation is calculated on the straight-line basis, using rates, which are reviewed annually. Useful lives for each class of depreciable assets are:

Furniture & Fittings	10 years
Equipment	5 years
Computer Hardware	3 to 5 years
Computer Software	3 to 5 years
Office fit-out	7 years

Works of art controlled by the Commission are classified as heritage assets. They are anticipated to have very long and indeterminable useful lives. Their service potential has not, in any material sense, been consumed during the reporting period. As such, no amount of depreciation has been recognised in respect of them.

**(g) Leases**

The Commission has entered into a number of operating lease arrangements for the rent of the office buildings and motor vehicles where the lessor effectively retains all of the risks and benefits incident to ownership of the items held under the operating leases. Equal installments of the lease payments are charged to the Statement of Financial Performance over the lease term, as this is representative of the pattern of benefits to be derived from the leased property.

**(h) Cash**

For the purpose of the Statement of Cash Flows, cash includes cash assets and restricted cash assets.

**(i) Accrued salaries**

Accrued salaries (refer note 18) represent the amount due to staff but unpaid at the end of the financial year, as the end of the last pay period for that financial year does not coincide with the end of the financial year. The Commission considers the carrying amount approximates net fair value.

**(j) Receivables**

Receivables are recognised as the amounts receivable as they are due for settlement no more than 30 days from the date of recognition. Collectability of receivables is reviewed on an ongoing basis. Debts that are known to be uncollectible are written off. A provision for doubtful debts is raised where some doubt as to their collection exists.

**(k) Payables**

Payables, including accruals not yet billed, are recognised when the Commission becomes obliged to make future payments as a result of a purchase of assets or services. Payables are generally settled within 30 days.

**(l) Employee benefits**

Annual Leave

This benefit is recognised at the reporting date in respect to employees service up to that date and is measured at the nominal amounts expected to be paid when the liabilities are settled.

Long Service Leave

Leave benefits are calculated at remuneration rates expected to be paid when the liabilities are settled. A liability for long service leave is recognised after an employee has completed seven years of service. The leave liability measured using the short hand method was not materially different from the liability measured using the present value of expected future payments.

This method of measuring of the liability is consistent with the requirements of Accounting Standard AASB 1028 "Employee Benefits".



---

## Superannuation

Staff may contribute to the Pension Scheme, a defined benefits pension scheme now closed to new members, or to the Gold State Superannuation Scheme, a defined benefit lump sum scheme now also closed to new members. All staff who do not contribute to either of these schemes become non-contributory members of the West State Superannuation Scheme, an accumulation fund complying with the Commonwealth Government's Superannuation Guarantee (Administration) Act 1992. The Government Employees Superannuation Board (GESB) administers all of these schemes.

The Pension Scheme and the pre-transfer benefit for employees who transferred to the GoldState Superannuation Scheme are unfunded and any liability for future payments is provided for at reporting date.

The liabilities for superannuation charges under the Gold State Superannuation Scheme and West State Superannuation Scheme are extinguished by payment of employer contributions to the Government Employees Superannuation Board.

The note disclosure required by paragraph 51(e) of AAS 30 (being the employer's share of the difference between employees' accrued superannuation benefits and the attributable net market value of plan assets) has not been provided. State scheme deficiencies are recognised by the State in its whole of government reporting. The Government Employees Superannuation Board's records are not structured to provide the information for the Authority. Accordingly, deriving the information for the Authority is impractical under current arrangements, and thus any benefits thereof would be exceeded by the cost of obtaining the information.

### Employee benefit on-costs

Employee benefit on costs, including payroll tax, are recognised and included in employee benefit liabilities and costs when the employee benefits to which they relate are recognised as liabilities and expenses.

### **(m) Resources received free of charge or for nominal value**

Resources received free of charge or for nominal value that can be reliably measured are recognised as revenues and as assets or expenses as appropriate at fair value.

### **(n) Comparative figures**

Comparative figures are, where appropriate, reclassified so as to be comparable with the figures presented in the current financial year

### **(o) Rounding**

Amounts in the financial statements have been rounded to the nearest dollar, or in certain cases, to the nearest thousand dollars.

**KIMBERLEY DEVELOPMENT COMMISSION**  
**Notes to the Financial Statements for the year ended 30 June 2004**

	<b>2003/04</b>	<b>2002/03</b>
	\$	\$
<b>2. Employee expenses</b>		
Salaries and wages	658,063	648,136
Superannuation	57,069	51,753
Annual Leave	15,111	9,061
Long Service Leave	32,349	(6,156)
Other related expenses (I)	267,723	232,821
	<b>1,030,315</b>	<b>935,615</b>
<p>(I) These employee expenses include superannuation, payroll tax, workers compensation premiums and other employment on costs associated with the recognition of annual and long service leave liability. The related on costs liability is included in employee benefit liabilities at Note 19.</p>		
<b>3. Depreciation expense</b>		
Office fit-out	3,440	0
Computing Equipment	19,288	21,246
Office Equipment	15,106	15,777
Furniture and Fittings	1,918	1,917
	<b>39,752</b>	<b>38,940</b>
<b>4. Grants and Subsidies</b>		
State Government	15,000	50,000
Local Government	59,500	0
Private Bodies	105,000	67,182
Community	80,649	0
	<b>260,149</b>	<b>117,182</b>
<b>5. Administration expenses</b>		
Maintenance of non-current assets	42,090	32,667
Communications	44,595	46,711
Consumable supplies	80,142	67,382
	<b>166,827</b>	<b>146,760</b>

**KIMBERLEY DEVELOPMENT COMMISSION**

**Notes to the Financial Statements for the year ended 30 June 2004**

	<b>2003/04</b>	<b>2002/03</b>
	\$	\$
<b>6. Accommodation expenses</b>		
Lease rentals	106,238	75,385
Repairs and maintenance of offices	817	1,416
Cleaning	20,205	13,864
	<b>127,260</b>	<b>90,665</b>
<b>7. Supplies and services</b>		
Consultants and contractors	93,200	110,803
Travel and accommodation (non staff)	19,509	19,299
Resources received free of charge	0	13,500
Motor vehicle management	31,291	29,134
Insurance (general)	23,387	19,377
Printing	0	12,188
	<b>167,387</b>	<b>204,301</b>
<b>8. Capital User Charge</b>	<b>59,448</b>	<b>56,480</b>
<p>A capital user charge rate of 8% has been set by the Government for 2003-04 and represents the Opportunity Cost of capital invested in the net assets of the Commission used in the provision of Outputs. The charge is calculated on the net assets adjusted to take account of exempt assets. Payments are made to the Department of Treasury and Finance on a quarterly basis.</p>		
<b>9. Grants and subsidies received</b>		
Department of Premier & Cabinet	5,908	0
Commonwealth Govt - Austrade	18,750	28,868
Commonwealth Govt – Telecentres initiative	75,000	0
Department of Industry and Technology	80,000	80,000
Kimberley Regional Development Scheme	400,000	600,000
	<b>579,658</b>	<b>708,868</b>
<b>10. Other revenues from ordinary activities</b>		
Recoups of expenditure from:		
New Directors' program participants	0	10,542
WA Tourist Commission	8,500	14,871
Aboriginal Economic Development	0	2,282
Sundry income	18,054	15,258
Staff rental contributions (GEHA)	17,850	12,369
	<b>44,404</b>	<b>55,322</b>

**KIMBERLEY DEVELOPMENT COMMISSION**

**Notes to the Financial Statements for the year ended 30 June 2004**

	<b>2003/04</b>	<b>2002/03</b>
	\$	\$
<b>11. Revenues from State Government</b>		
Appropriation revenue received during the year:		
Output appropriations (i)	1,523,000	1,273,500
<b>Resources received free of charge (ii)</b>		
Legal services	4,311	0
Office of Auditor General (iii)	0	13,500
	<u>1,527,311</u>	<u>1,287,000</u>

(i) Output appropriations are accrual amounts reflecting the full cost of outputs delivered. The appropriation revenue comprises a cash component and a receivable (asset). The receivable (holding account) comprises the depreciation expense for the year and any agreed increase in leave liability during the year.

(ii) Where assets or services have been received free of charge or for nominal consideration, the authority recognises revenues (except where the contribution of assets or services is in the nature of contributions by owners, in which case the authority shall make a direct adjustment to equity) equivalent to the fair value of the assets and/or the fair value of those services that can be reliably determined and which would have been purchased if not donated, and those fair values shall be recognised as assets or expenses, as applicable.

(iii) Commencing with the 2003/04 audit, the Office of the Auditor General will be charging a fee for auditing the accounts, financial statements and performance indicators. The fee for the 2003/04 audit \$13,500 will be payable in the 2004/05 financial year.

<b>12. Restricted cash assets (i)</b>		
Community Resource Centre Wyndham	75,000	75,000
Kimberley Regional Development Scheme	713,312	0
Regional Investment Fund	17,000	0
Balgo Youth Services	5,908	0
Telecentres	75,000	0
Savannah Way	40,000	0
	<u>926,220</u>	<u>75,000</u>

(i) Restricted cash is to be used for the purpose of contributions to specified initiatives and projects. During the year the Department of Treasury and Finance policy on Restricted Cash has changed. Some amounts previously held as Cash are now defined as Restricted Cash.

<b>13. Receivables</b>		
Trade debtors (i)	11,555	116,298
Less Provision for Doubtful Debts	591	0
	<u>10,964</u>	<u>116,298</u>

<b>14. Amounts receivable for outputs</b>		
Current	<b>40,000</b>	<b>58,000</b>
This asset represents the non-cash component of output appropriations. It is restricted in that it can only be used for asset replacement or payment of leave liability.		

**KIMBERLEY DEVELOPMENT COMMISSION**  
**Notes to for the year ended 30 June 2004**

	\$ 2003/04	\$ 2002/03
<b>15. Other assets</b>		
Prepayments	20,264	2,826
<b>16. Plant and equipment</b>		
<b>(i) At 30 June 2004 and 30 June 2003</b>		
Artwork (at cost)	8,788	0
Office fit-out at cost	134,490	0
Accumulated Depreciation	(3,440)	0
	131,050	0
Computing Equipment at cost	154,869	141,094
Accumulated Depreciation	(133,647)	(114,359)
	21,222	26,735
Office Equipment at cost	122,512	116,668
Accumulated Depreciation	(79,991)	(64,885)
	42,521	51,783
Furniture and Fittings at cost	19,400	21,564
Accumulated Depreciation	(11,513)	(11,760)
	7,887	9,804
Total Assets	<b>211,468</b>	<b>88,322</b>

**(ii) Reconciliations**

Reconciliations of the carrying amounts of non current assets at the beginning and end of the current and previous financial years are set out below.

**2003/04**

	Artwork	Office fit out	Computer Equipment \$	Office Equipment \$	Furniture and Fittings \$	Total \$
Carrying amount at the start of the year		0	26,735	51,783	9,804	88,322
Additions	8,788	134,490	13,775	5,844	0	162,897
Depreciation	0	(3,440)	(19,288)	(15,106)	1,918	(39,654)
Carrying amount at the end of the year	8,788	131,050	21,222	42,521	7,887	211,468

**KIMBERLEY DEVELOPMENT COMMISSION**  
**Notes to for the year ended 30 June 2004**

	<b>2003/04</b>	<b>2002/03</b>
	\$	\$
<b>17. Payables</b>		
Trade Payables	89,623	36,126
<b>18. Other liabilities</b>		
Accrued Salaries	22,967	18,800
Accrued Expenses	94,232	0
	<b>117,199</b>	<b>18,800</b>
<b>19. Provisions</b>		
<u>Current:</u>		
Annual Leave	80,261	66,569
Long Service Leave	60,739	28,577
Other (I)	14,608	10,220
	<b>155,608</b>	<b>108,873</b>
<u>Non-current:</u>		
Long Service Leave	40,473	40,801
Other (I)	4,192	4,226
	<b>44,665</b>	<b>153,900</b>

The settlement of annual and long service leave liabilities gives rise to the payment of employment on-costs including superannuation, payroll tax and workers compensation premiums. The liability of such on-costs is included here. The associated expense is included under Other related expenses at Note 2.

<b>20. Equity</b>		
Contributed equity		
Opening balance	30,000	30,000
Capital contributions (I)	14,000	0
Closing balance	<b>44,000</b>	<b>30,000</b>
<u>Accumulated Surplus/(Deficiency)</u>		
Opening Balance	959,256	518,338
Change in Net Assets	280,770	440,917
Closing Balance	<b>1,240,026</b>	<b>959,256</b>

Capital Contributions have been designated as contributions by owners are credited directly to equity in the Statement of Financial Position.

**KIMBERLEY DEVELOPMENT COMMISSION**

**Notes to for the year ended 30 June 2004**

**21. Notes to the Statement of Cash Flows**

	<b>2003/04</b>	<b>2002/03</b>
	\$	\$

(a) Reconciliation of Cash

Cash at the end of the financial year as shown in the Statement of Cash Flows is reconciled to the related items in the Statement of Financial Position as follows:

Cash Assets	482,205	857,634
Restricted Cash Assets (refer to note 12)	926,220	75,000
	<b>1,408,425</b>	<b>932,634</b>

(b) Reconciliation of net cost of services to net cash flows provided by/(used in) operating activities:

Net Cost of Services	(1,246,541)	(846,083)
Non-cash items:		
Depreciation expense	39,752	38,940
Resources received free of charge	4,311	13,500
(Profit)/loss on sale of property, plant and equipment	0	(300)
(Increase)/decrease in assets:		
Current receivables	106,459	(113,625)
Other current assets	(17,438)	520
Increase/(decrease) in liabilities:		
Current payables	135,791	(13,030)
Current provisions	46,735	5,337
Other current liabilities	4,166	(4,568)
Non-current provisions	(362)	24,704
Net GST Receipts/Payments	(40,728)	
Net cash provided by/(used in) operating activities	<b>(967,855)</b>	<b>(894,605)</b>

(c) At 30 June 2004 the Commission had fully drawn on all financing facilities detailed and disclosed in the financial statements.

**22. Commitments for Expenditure**

Non cancellable operating lease commitments:

Within 1 year	125,522	89,954
Later than 1 year and not later than 5 years	331,600	83,637
Later than 5 years	131,258	0
	<b>588,380</b>	<b>173,591</b>

**KIMBERLEY DEVELOPMENT COMMISSION**  
**Notes to the Financial Statements for the year ended 30 June 2004**

**22. Remuneration of Members of the Accountable Authority and Senior Officers**

**(i) Members of the Accountable Authority**

The number of members of the Accountable Authority whose total fees, salaries, allowances and superannuation for the financial year are as follows, in the following bands:

	<b>2003/04</b>	<b>2002/03</b>
\$		
1 - 10,000	11	9
130,001 – 140,000	1	1

The total remuneration of the members of the Accountable Authority is:

<b>\$162,776</b>	<b>\$155,052</b>
------------------	------------------

The superannuation included here represents the superannuation expense incurred by the Authority in respect of members of the Accountable Authority.

One member of the Accountable Authority is a member of the Pension Scheme.

**(ii) Senior Officers**

The number of senior officers, other than senior officers reported as members of the Accountable Authority, whose total fees, salaries, superannuation and other benefits for the financial year are as follows, in the following bands:

\$		
70,001-80,000	0	1
80,001 – 90,000	1	0

The total remuneration of senior officers is:

<b>\$81,895</b>	<b>\$88,960</b>
-----------------	-----------------

The superannuation included here represents the superannuation expense incurred by the Authority in respect of Senior Officers other than Senior Officers reported as Members of the Accountable Authority.

No Senior Officers are members of the Pension Scheme.



**KIMBERLEY DEVELOPMENT COMMISSION**  
**Notes to for the year ended 30 June 2004 (continued)**

**23. Financial Instrument Disclosures**

(a) Interest Rate Risk Exposure

Currently the Commission has no exposure to interest rate risk or repricing maturities as all financial assets and financial liabilities are non-interest bearing.

(b) Credit Risk Exposure

Receivables are the only financial instrument in which there is credit risk exposure and their credit risk is represented by their carrying amount.

(c) Net Fair Values

The carrying amount of financial assets and financial liabilities recorded in the financial statements are not materially different from their net fair values determined in accordance with the accounting policies disclosed in Note 1 to the financial statements.

**24. Explanatory Statement**

**(i) Significant variations between actual revenues and expenditures for the financial year and revenues and expenditures for the immediately preceding financial year**

Details and reasons for significant variations between actual results with the corresponding items of the preceding year are detailed below. Significant variations are considered to be those greater than 10% or \$10,000. For ease of comparison figures have been rounded to the nearest \$000.

	<b>2003/04</b>	<b>2002/03</b>	<b>Variance</b>	<b>Variance</b>
	<b>\$000</b>	<b>\$000</b>	<b>\$000</b>	<b>%</b>
Employee expenses	1,030	936	94	10%
Grants and subsidies received	580	709	(129)	(18%)

Employee expenses

During the year two Project Officer's positions were filled by full time staff and one contract position was filled to provide support for the Ord River Stage 2 project and Kimberley Tourism.

Grants and subsidies received

In 2002/03 the Commission received Kimberley Regional Development Scheme grants for both 2002/03 (\$400k) and 2001/02 (\$200k). In 2003/04 the Regional Kimberley Development Scheme grants were \$400k. This reduction was partially offset by an advance of \$75k from the Commonwealth Government to fund regional Telecentres.

**(ii) Significant variations between actual revenues and expenditures for the financial year and those in budget statements.**

	<b>Actual</b>	<b>Budget</b>	<b>Variance</b>
	<b>\$000</b>	<b>\$000</b>	<b>\$000</b>
Change in Assets Resulting from Operations	281	93	188

Timing of payment of Grants budgeted (\$460k) and actual Grants (\$260k) payments.

**KIMBERLEY DEVELOPMENT COMMISSION**

**Notes To Financial Statements for the year ended 30 June 2004**

**25. Contingent liabilities**

To the best of our knowledge we are not aware of any circumstances that may result in a contingent liability.

**26. Events Occurring after Reporting Date**

We are not aware of any circumstances that have arisen since the end of the financial year to the date of this report which have significantly affected or may significantly affect the activities of the Commission, the results of those activities, or the state of affairs of the Commission in the ensuing or any subsequent financial year.

**27. Related Bodies**

The Kimberley Development Commission has no related bodies.

**28. Affiliated Bodies**

The Kimberley Development Commission has no affiliated bodies.

**KIMBERLEY DEVELOPMENT COMMISSION**  
**Notes To The Financial Statements for the year ended 30 June 2004**

	Output 1		Output Information Output 2		Totals	
	2003/04	2002/03	2003/04	2002/03	2003/04	2002/03
	\$	\$	\$	\$	\$	\$
<b>COST OF SERVICES</b>						
<b>Expenses from ordinary activities</b>						
Employee expenses	605,206	441,985	425,109	493,630	1,030,315	935,615
Depreciation	23,350	18,395	16,402	20,545	39,752	38,940
Grants and subsidies	152,812	55,357	107,337	61,825	260,149	117,182
Administration expenses	97,994	69,329	68,833	77,431	166,827	146,760
Accommodation expenses	74,753	42,830	52,507	47,835	127,260	90,665
Supplies and services	98,323	96,512	69,064	107,789	167,387	204,301
Capital user charge	34,920	26,681	24,528	29,799	59,448	56,480
Board remuneration and allowances	11,434	10,548	8,031	11,781	19,465	22,329
<b>Total Cost of Services</b>	<b>1,098,792</b>	<b>761,675</b>	<b>771,811</b>	<b>850,597</b>	<b>1,870,603</b>	<b>1,612,272</b>
<b>Revenues from Ordinary Activities</b>						
Grants and subsidies	(340,491)	(334,869)	(239,167)	(373,999)	(579,658)	(708,868)
Other revenue from ordinary activities	(26,083)	(26,134)	(18,321)	(29,188)	(44,404)	(55,322)
Net profit on disposal of non current assets	0	(945)	0	(1,055)	0	(2,000)
<b>Total revenue from ordinary activities</b>	<b>(366,574)</b>	<b>(361,948)</b>	<b>(257,488)</b>	<b>(404,242)</b>	<b>(624,062)</b>	<b>(766,190)</b>
<b>NET COST OF SERVICES</b>	<b>732,102</b>	<b>399,690</b>	<b>514,242</b>	<b>446,392</b>	<b>1,246,344</b>	<b>846,082</b>
<b>REVENUES FROM STATE GOVERNMENT</b>						
Appropriations	(894,610)	(601,601)	(628,390)	(671,899)	(1,523,000)	(1,273,500)
Resources received free of charge	(2,532)	(6,378)	(1,779)	(7,123)	(4,311)	(13,500)
<b>Total revenues from government</b>	<b>(897,142)</b>	<b>(607,979)</b>	<b>(630,169)</b>	<b>(679,021)</b>	<b>(1,527,311)</b>	<b>(1,287,000)</b>
<b>CHANGE IN NET ASSETS</b>	<b>164,924</b>	<b>208,289</b>	<b>115,846</b>	<b>232,629</b>	<b>280,770</b>	<b>440,918</b>

---

## **BETTER PLANNING: BETTER SERVICES, A STRATEGIC PLANNING FRAMEWORK FOR THE WESTERN AUSTRALIAN PUBLIC SECTOR**

This section of the Annual Report cross references the Goals of the *Better Planning: Better Services, Strategic Planning Framework for the Western Australian Public Sector* to the operations and activities of the Commission as outlined in the body of the Report. This is designed to provide a picture of how the Commission's efforts relate to the Strategic Planning Framework and at the same time, provide a document that is readable and which gives a clear overview of the Commission's mission, activities and achievements.

### **GOAL 1. PEOPLE AND COMMUNITIES:**

#### ***TO ENHANCE THE QUALITY OF LIFE AND WELL BEING OF ALL PEOPLE THROUGHOUT WESTERN AUSTRALIA***

##### ***Agency Specific Reporting***

The detailed work of the Commission is outlined in the section Regional Development Activities 2003/2004 on pages xx. While some of the activities described in that section are related to the Strategic Outcomes of Goal 1. People and Communities, to avoid repetition, they have not been reported separately.

##### ***Obligatory Reporting***

- Disability Services Plan Outcomes – see page 17
- Cultural Diversity and Language Services Outcomes – see page 17
- Youth Outcomes – see page 18

### **GOAL 2. THE ECONOMY**

#### ***TO DEVELOP A STRONG ECONOMY THAT DELIVERS MORE JOBS, MORE OPPORTUNITIES AND GREATER WEALTH TO WESTERN AUSTRALIANS BY CREATING THE CONDITIONS REQUIRED FOR INVESTMENT AND GROWTH.***

##### ***Agency Specific Reporting***

The detailed work of the Commission is outlined in the section Regional Development Activities 2003/2004 on pages xx. While some of the activities described in that section are related to the Strategic Outcomes of Goal 2. The Economy, to avoid repetition, they have not been reported separately.

##### ***Obligatory Reporting***

Please refer to pages 50-67 for the financial reports for the Commission.

### **GOAL 3. THE ENVIRONMENT**

***TO ENSURE THAT WESTERN AUSTRALIA HAS AN ENVIRONMENT IN WHICH RESOURCES ARE MANAGED, DEVELOPED AND USED SUSTAINABLY, BIOLOGICAL DIVERSITY IS PRESERVED AND HABITATS PROTECTED.***

#### ***Agency Specific Reporting***

The detailed work of the Commission is outlined in the section Regional Development Activities 2003/2004 on pages xx. While some of the activities described in that section are related to the Strategic Outcomes of Goal 3. The Environment, to avoid repetition, they have not been reported separately.

#### ***Obligatory Reporting***

##### **Waste Paper Recycling**

Metropolitan based Agencies are required to report on their achievements with regard to waste paper recycling. The Commission is located in regional WA and is not therefore required to report on waste paper recycling. However every effort is made to recycle and minimise use of paper to avoid waste.

##### **Energy Smart Government Policy**

Agencies with more than twenty-five staff are required to report on their achievements against the Energy Smart Government Policy.

The Commission has a staff complement of twelve and is not therefore required to report on its achievements in this area. However the Commission attempts to minimise its use of energy wherever possible.

### **GOAL 4. - THE REGIONS**

***TO ENSURE THAT REGIONAL WESTERN AUSTRALIA IS STRONG AND VIBRANT***

#### ***Agency Specific Reporting***

The Kimberley Development Commission is reporting separately to this Annual Report through the Regional Development Policy implementation process at the strategy level for each relevant outcome. Development Commissions have been requested to report against at least nine Strategic Outcomes through this process. The Kimberley Development Commission has identified 33 strategies under 12 Strategic Outcomes that are relevant to work it is undertaking.

#### ***Obligatory Reporting***

All of the projects and activities outlined in the section *Regional Development Activities 2003/04* on page 25-40, relate to Goal 4 *The Regions*. The projects and activities are listed under the separate Strategic Outcomes of Goal 4.

## **GOAL 5. GOVERNANCE**

### ***TO GOVERN FOR ALL WESTERN AUSTRALIANS IN AN OPEN, EFFECTIVE AND EFFICIENT MANNER THAT ALSO ENSURES A SUSTAINABLE FUTURE***

#### ***Agency Specific Reporting***

The detailed work of the Commission is outlined in the section Regional Development Activities 2003/2004. While some of the activities described in that section are related to the Strategic Outcomes of Goal 5. Governance, to avoid repetition, they have not been reported separately.

Additional agency reporting has been included to cover the following.

- Staffing - see page 19
- The Corporate Plan - see page 20
- Shared Corporate Services - see page 20
- Information Technology Review - see page 20
- Publications - see page 21

#### ***Obligatory Reporting***

- Equal Employment Opportunity Outcomes – see page - see page 19
- Evaluations - see page 20 (See also pages 43-47 for Performance Indicators)
- Recordkeeping Review - see page 22
- Information Statement - see page 20
- Compliance with Public Sector Standards and Ethical Codes - see page 23
- Public Interest Disclosures - see page 24
- Advertising and Sponsorship - see page 24