

Kimberley Development
Commission

Strategic Plan

2009 to 2010



Chairperson's Message

The Kimberley is a vast region of abundant resources, attractions and opportunities. Rich in both natural and cultural assets, it hosts a broad based and diverse economy. Our sometimes unique environment and our water and energy reserves are globally significant.

Kimberley people are innovative and energetic. Drawn from many cultures and backgrounds, the region's community is one of diversity and varied aspirations.

The Kimberley Development Commission is committed to identifying the region's assets and to optimising regional economic outcomes that flow from this. We encourage entrepreneurial spirit and innovation.

The Commission is also committed to confronting matters of social equity. The Kimberley Aboriginal population exhibits high levels of unemployment, and shows disturbing trends in health, education, rates of incarceration, and substance abuse. We are supportive of wider initiatives aimed at "closing the gap".

Our settlements provide lifestyle choices but also challenging circumstances. We recognise the struggle of Kimberley towns to achieve and maintain a level of community infrastructure and services enjoyed in the metropolitan area. We recognise the regional benefits from being able to attract and retain skilled teachers, health care staff and police.

All towns in the region face public housing shortages and high rentals affect affordability in some centres. A dispersed settlement pattern presents challenges for the building of sustainable remote communities.

The Commission has a pivotal role in assisting the region realise its opportunities and meet these challenges. The Commission aims to facilitate balanced economic and social development that provides positive benefits for local communities and opportunities to maintain and enhance the Kimberley way of life.

This Strategic Plan provides the basis for developing proactive and inclusive corporate activities aimed at achieving the Commission's vision for:

"A prosperous Kimberley region, characterised by proactive cooperation and respect among its people who all enjoy the benefits of economic, social and cultural development, a unique environment and a healthy lifestyle."

Our aim is to position the Kimberley as a prosperous and dynamic part of Western Australia and Australia. We want to be recognized as a good place to live, to visit and to do business. We want to be a region that can proudly show case best practice principles of community and economic development, as well as social justice and amenity for its people.

This Strategic Plan will provide guidance for the future of the Commission as we advocate for the public and the private sectors to meet the challenges that face the Kimberley.



Patrick Dodson
Chairperson

Chief Executive's Message

This Strategic Plan reflects the vision of the Commission's Board of Management. It sets a framework for actions and outcomes that enable the Commission to achieve the statutory obligations that are set out in the Regional Development Commissions Act 1993. The Plan guides Commission staff in responding to regional priorities and in establishing day to day work practices.

The Commission is committed to its corporate values:

- Regional focus of activities
- Open and consultative approach
- Respect for other opinions
- Service culture
- Recognition of knowledge and expertise of Kimberley People
- Cultural Diversity
- Sustainability of the region and its economy
- Positive and timely outcomes
- Creativity of ideas and research
- Cooperative effort to achieve results
- Resource Management
- Support for environmental management

The Commission provides an important catalyst to facilitate broad based improvements in social and economic conditions for the region. We assist industry prepare and implement strategies that explore new markets and promote new product development. We facilitate research and support initiatives aimed at establishing a skilled and diversified labour market.

The Commission advocates on behalf of Kimberley people to ensure improved standards of regional infrastructure and equitable access to broad ranging community services. We are responsible for identifying barriers that stand in the way of these outcomes and advocating solutions to key decision makers.

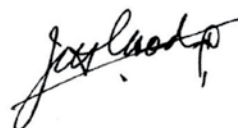
The Commission provides support for regional initiatives aimed at improving access to technology.

Throughout our work we recognise the value of partnering with the community, industry and other government agencies. Our aim is to work collaboratively to promote and facilitate leadership development, cross cultural respect and understanding, and improved educational opportunities and skills development. We explore new and innovative ways of increasing Indigenous participation in the mainstream economy, and advocate for improvements to the delivery of health services, education, justice and housing.

The Commission is in a strong position to support regional initiatives by influencing Government policy development, by providing broad ranging expertise, and by prioritising funding opportunities for projects that have the capacity to sustain balanced regional development.

We are a regionally driven organisation. We are committed to local and regional solutions to local and regional challenges. We are committed to fair and sustainable responses to the challenges of economy and community.

The Commission's skilled, focussed and experienced staff looks forward to implementing the Board's vision and working with other important stakeholders to enhance outcomes for the Kimberley as the region enters an era that will be characterised by significant development.



Jeff Gooding
Chief Executive Office



Corporate Intent

Vision

Our vision is for a prosperous Kimberley region, characterised by proactive cooperation and respect among its people who all enjoy the benefits of economic, social and cultural development, a unique environment and a healthy lifestyle.

Strategic Project Development, Support and Coordination

Corporate Management and Leadership Development

Regional Information, Promotion and Advocacy

Regional and Strategic Planning

Development Processes, Partnerships and Government Policies

Infrastructure & services: Identification, Development and Monitoring

Business and Industry Development and Diversification

Facilitate Access to Funding for Regional Initiatives



Key Strategic Priorities

The Commission aims to leverage the best possible social and economic outcomes for Kimberley people from private and public investment in the region.

Its responsibilities and services to the region are focused on the following priorities:

- A cohesive Kimberley society that recognises the needs and aspirations of all of its people
- Access to services equitable with other parts of metropolitan and regional Western Australia
- Collaboration between all levels of government to maximise synergies and to eliminate waste and duplication
- Public and private business carriage of effective local and Indigenous employment and training strategies
- High capacity for leadership and governance at all levels in the community
- Affordable and appropriate public and private housing
- Regional infrastructure able to cater to industry and community needs
- Social equity in the provision of infrastructure and services for all residents of the Kimberley
- A robust commercial sector delivering diverse, real and sustainable benefits to Kimberley people



Policies, Strategies, Plans and Regional Promotion

Service 1.

The Commission will provide effective regional development policies and strategies together with accurate and accessible information on the region to facilitate and support the economic and social development of the region.

Major Strategies

Strategic Project Development, Support and Coordination

The Commission will facilitate and coordinate support for strategic regional economic development projects using a whole of government approach to ensure optimum allocation and leverage of resources.

Regional and Strategic Planning

The Commission will identify and promote the needs of the region through the development and coordination of regional strategies and planning initiatives.

Corporate Management and Leadership Development.

The Commission recognises the importance of leadership to successful and effective regional development and supports Kimberley people and organisations in the development of leadership and development capacity.

Regional Information, Promotion and Advocacy

The Commission will facilitate development and investment through the promotion of the region and maintain and disseminate accurate information to support decision-making, planning and investment.

Industry and Infrastructure Identification, Coordination and Development

Service 2.

The Commission will identify, co-ordinate and promote through its major strategies the establishment, improvement and diversification of the region's infrastructure, industries and enterprises.

Major Strategies

Business and Industry Development and Diversification	The Commission will facilitate and promote the establishment, improvement and diversification of industry throughout the Kimberley and will continue to support the development of new and emerging industries.
Infrastructure and Services Identification, Development and Monitoring	The Commission will identify, encourage and facilitate the establishment of appropriate and catalytic economic and social infrastructure to support the development of the region and monitor and promote the equitable delivery of services and the development of infrastructure.
Development Processes, Partnerships and Government Policies	The Commission will establish effective partnerships with key stakeholders to facilitate the achievement of strategic objectives and will monitor and contribute to formal development processes to advance and assist development outcomes.
Facilitate access to Funding for Initiatives in the Region	The Commission will facilitate the allocation of direct grant funding to significant projects and identify and facilitate appropriate funding from other sources.



Statutory Purpose, Objectives and Functions

The Kimberley Development Commission is established as a Statutory Authority under the Regional Development Commissions Act 1993.

The purpose, objects and functions of the Commission as set out below are the primary guidelines for the Commission's activity.

PURPOSE

To achieve an environment which is conducive to the balanced economic and social development of the Kimberley region.

STATUTORY OBJECTIVES

The statutory objectives of the Commission are set out in Section 23 of the Regional Development Commissions Act 1993. They are to:-

- (a) maximise job creation and improve career opportunities in the region;
- (b) develop and broaden the economic base of the region;
- (c) identify infrastructure services to promote economic and social development within the region;
- (d) provide information and advice to promote business development within the region;
- (e) seek to ensure that the general standard of government services and access to those services in the region is comparable to that which applies in the metropolitan area; and
- (f) generally take steps to encourage, promote, facilitate and monitor the economic development in the region.

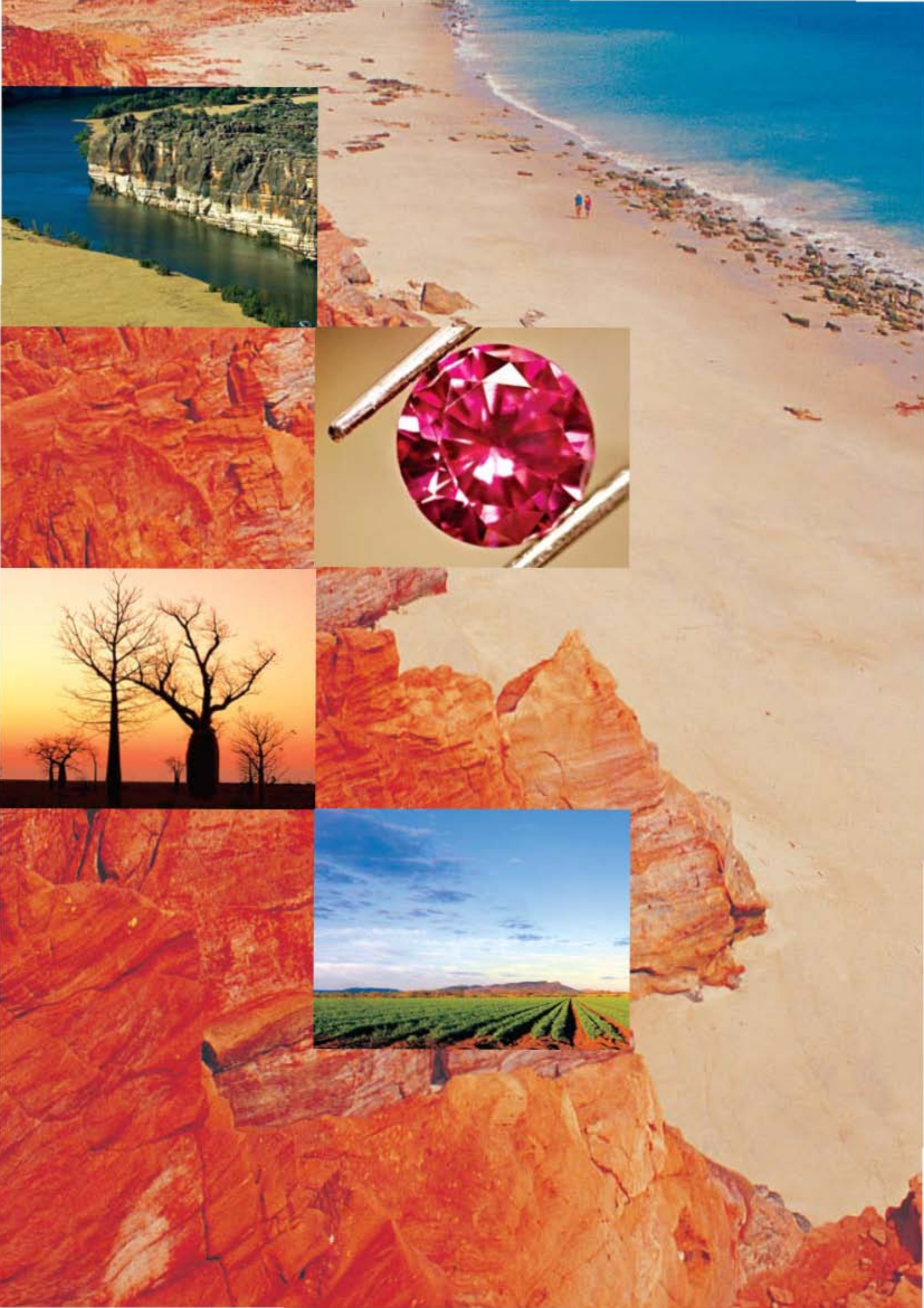
FUNCTIONS

The Commission provides an integral component of a 'whole-of-Government' approach to the requirements of regional development. By assisting in the coordination of responsibilities of a wide range of agencies having impact on regional development, the Commission is able to perform an important role in identifying needs and ensuring rationalised and appropriate application of Government resources to the region.

For the purposes of achieving its statutory objectives the Commission is to -

- (a) promote the region;
- (b) facilitate coordination between relevant statutory bodies and State Government agencies;
- (c) cooperate with representatives of industry and commerce, employer and employee organisations, education and training institutions and other sections of the community within the region;
- (d) identify the opportunities for investment in the region and encourage that investment;
- (e) identify the infrastructure needs of the region, and encourage the provision of that infrastructure; and
- (f) cooperate with –
 - (i) departments of the Public Service of the State and the Commonwealth, and other agencies, instrumentalities and statutory bodies of the State and the Commonwealth; and
 - (ii) local government authorities in order to promote equitable delivery of services within the region.

The Commission's Strategic Plan sets the framework within which these statutory obligations are achieved.





KIMBERLEY DEVELOPMENT COMMISSION

Kununurra

7 Ebony St
PO Box 620
Kununurra WA 6743

t: 08 9168 1044
f: 08 9168 1473

Broome

Cnr Napier and Dampier Tce (upstairs)
PO Box 172
Broome WA 6725

t: 08 9193 6795
f: 08 9193 6142

Derby

Loch Street
PO Box 845
Derby WA 6728

t: 08 9193 1444
f: 08 9193 1445

info@kdc.wa.gov.au

www.kimberley.wa.gov.au