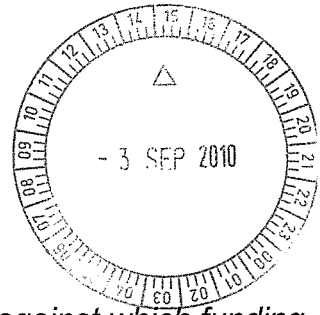


PUBLIC



Questions from Estimates Committee 9 August 2010

Monday 9 August 2010
Minister for Regional Development; Lands

Question No A1 – *Hon Ken Travers asked for a list of the criteria against which funding is expended from the Northern Towns Development Fund*

Answer:

The Northern Towns Development Fund is not a contestable fund. It is available to state agencies to access for use in the planning and development of northern towns, with the overarching Royalties for Regions principles applicable to expenditures from it.

An amount of \$38.1 million is allocated to 2013/14 and \$1.9 million allocated in 2014/15 to fund this initiative.

The Liberal-National Government committed to fund the development of local plans in conjunction with industry, local industry, local business, local government and the community. This fund will also be available to address urgent small works and projects that are identified in the planning process;

The Northern Towns Development Fund is to provide much needed additional investment for planning and development of priority infrastructure in Northern towns.

Question No A2 – *Hon Ljiljana Ravlich requested a copy of the Special Purpose Account and its transactions over the last 12 months or the last financial year, as well as the disbursement profile--checking reconciliation at year end back to the SPA*

Answer: Please see attachment A2.

Question No A3- *Hon Ken Travers asked for a list of funding paid out to agencies prior to them having expended the money*

Answer:

As advised during the Estimates Hearing, this information will be forwarded to the Committee by the end of September 2010.

Question No A4- *Hon Ken Travers asked for a list of quarterly acquittals (not audited by RDL)*

Answer:

As advised during the Estimates Hearing, this information will be forwarded to the Committee by the end of September 2010.

Question No A5-*Hon Ljiljanna Ravlich requested any correspondence between the agency and DTF on the process of drawdown to SPA, timing when funds should be drawn down to SPA.*

Answer:

The Member is referred to the provisions of the *Freedom of Information Act 1992* for obtaining copies of correspondence of such a nature between the two departments.

Question No A6-*Hon Ken Travers asked relative to Merredin School K-12 school, how much was proposed, how much was originally allocated in their budget for upgrades, and to confirm that it was in addition to federal funding*

Answer:

The project has been funded with \$6million from the State Government's Royalties for Regions program, \$6million from the Department of Education capital works program, and \$3.4million from the Federal Government's Building the Education Revolution.

Question No A7 –*Hon Ljiljanna Ravlich asked for a schedule of all unallocated funds with no finite project detailed analysis (ie not allocated to specific projects, themes, or areas of expenditure like health, education and housing)*

Answer:

New Regional and State-wide Initiatives (\$10m) are currently unallocated to adjust and respond to changing financial circumstances.

Question No A8-*Hon Ken Travers asked whether the Department performed any additional analysis with respect to how much the department was planning to spend in regional WA (versus metropolitan Perth)*

Answer:

No. RDL has not performed any additional analysis for formulating the plan for expenditure. The Department of Education is presently developing a business plan to outline expenditure for this allocation for consideration.

Question No A9 –*Hon Ljiljanna Ravlich requested a summary of the break down of expenditures for Health – (includes PATS, Royal Flying Doctor, and other recurrent fundings)*

Answer:

Royalties for Regions Health investment is \$302.1m in capital and \$93.8m in recurrent from 2010-11 to 2013-14 as follows:

Under the 2010-11 State Budget the following line items in Royalties for Regions, Regional Community Services Fund, \$93.8million is allocated to specific recurrent expenditure on Health Projects:

1. Royal Flying Doctor Service - \$21.2m allocated from 2010-11 to 2013-14
2. Patient Assisted Travel Scheme - \$36.9m allocated from 2010-11 to 2013-14
3. Rural Generalist Pathways - \$8.5m allocated from 2010-11 to 2013-14
4. St John Ambulance Services in County WA - \$26m allocated from 2010-11 to 2013-14
5. Pilbara Cardio Vision Program - \$1.2m allocated from 2010-11 to 2013-14

Under the 2010-11 State Budget the following line items in Royalties for Regions, Regional Infrastructure and Headworks Fund, \$302.1million allocated to specific capital expenditure on Health Projects:

1. Nickol Bay Hospital Upgrade - \$6m allocated from 2010-11 to 2013-14
2. Nickol Bay Hospital (New) - \$125m allocated from 2010-11 to 2013-14
3. Pilbara Health Partnership - \$24.97m allocated from 2010-11 to 2013-14
4. Exmouth Health Clinic - \$8m allocated from 2010-11 to 2013-14
5. Carnarvon Hospital - \$20.7m allocated from 2010-11 to 2013-14
6. Kalgoorlie Hospital - \$15.5m allocated from 2010-11 to 2013-14
7. Albany Hospital - \$60.9m allocated from 2010-11 to 2013-14
8. Esperance Hospital - \$18.8m allocated from 2010-11 to 2013-14
9. Remote Indigenous Health Clinics - \$22.2m allocated from 2010-11 to 2013-14

Question No A10 – *Hon Ken Travers asked for a copy of the maps of paths of irrigation channels; boundaries of the proposed irrigation area; any conservation buffer zones and conservation areas; actual farming lots to be sold off*

Answer:

Please see attachment A10.

Question No A11 – *Hon Ljiljanna Ravlich requested a breakdown of costs to date relative to the review of the Regional Development Commissions-and projection for the full amount of costs*

Answer:

A breakdown of the costs to date (31/08/2010) of the Review of the Regional Development Commissions as expended by the Department of Regional Development and Lands is as follows:

Sitting fees for committee member: \$1,590.00

Airfares, accommodation and other disbursements for committee member: \$1,709.20

Airfares, accommodation and other disbursements for Executive Officer: \$1,958.07

Catering: \$184.50

Salaries of Executive Support Officer: \$4,346.00

Projected costs for the remainder of the Review to the Department of Regional Development and Lands is as follows:

Sitting fees for committee member: \$1,240

Airfares, accommodation and other disbursements for committee member: \$1,180.00

Disbursements for Executive Officer: \$130.00

Catering: \$200.00

Salaries of Executive Support Officer: \$8,692.00

Consultancy Fees: \$187,420.20

The total anticipated cost of the Review is \$208,649.97.

Note that this cost estimate does not include the salary of the Executive Officer, as the Executive Officer is on secondment from the Office of the Public Sector Standards Commissioner at no cost to the Department of Regional Development and Lands.

Question No A12 – *Hon Ljiljanna Ravlich requested a schedule of people with whom Wendy Duncan met in the country specifically in relation to the terms of reference of the inquiry.*

Answer:

While travelling through the Mining and Pastoral Electorate, Hon Wendy Duncan MLC met with various local governments including the Shires of Menzies, Leonora, Laverton, Derby West Kimberley, Broome, Ashburton, Meekatharra and Sandstone. In the course of her discussions with these Shires on various matters she took the opportunity to advise of the terms of reference of the review and the extension given to local government to respond. While in the Kimberley Hon Wendy Duncan also met with the Kimberley Development Commission to provide representatives with a similar opportunity to discuss the review as was given to representatives of Development Commissions that came to Perth.

Question No A13- *Hon Ken Travers asked to be provided with the cost of Focus newsletter*

Answer:

The Pilbara *Focus* newsletter cost \$3,230.08.

Question No A14 – *Hon Ken Travers asked for a breakdown of hats and pens purchased and how many distributed, as well as confirmation that no hats and pens were sent to Members of Parliament.*

Answer:

2000x Wide body colour grip pen, white/ bottle green, including 3 colour print (Royalties for Regions logo) \$3,850.00

1,000 x Brushed heavy cotton caps, natural / bottle green, including 1 position embroidery (Royalties for Regions logo) \$5,900.00

1000 x constellation ballpoint green pens (Royalties for Regions logo) & delivery \$ 3421

The above mentioned pens and hats have been distributed to community members and stakeholders via regional shows, community events, stakeholder events or meetings.

Hats and pens to promote State Government Policy are distributed at various events by both Members of Parliament and Government agencies.

Royalties for Regions SPA Reconciliation 2009-2010

Opening Balance	25,906,000
Plus: Amount Transferred from Consolidated Account to SPA in 2009-10	644,000,000
Less: Cash Payments for 2009-10	<u>253,966,000</u>
Closing Balance	<u><u>415,940,000</u></u>

Transfer of Recurrent Appropriation from Consolidated Account to Agency's Special Purpose Accounts

<i>Regional Infrastructure and Headworks Fund (TSE-010441)</i>	79,319,000
<i>Country Local Govt. Fund (TSE-010442)</i>	10,000,000
<i>Regional Community Services Fund (TSE-010443)</i>	38,341,000
<i>Regional and Statewide Initiatives Fund (formerly called Unallocated) (TSE-010444)</i>	210,504,000

Transfer of Capital Appropriation from Consolidated Account to Agency's Special Purpose Accounts

<i>Regional Infrastructure and Headworks Fund (TSE-012037)</i>	284,786,000
<i>Regional and Statewide Initiatives Fund (formerly called Unallocated) (TSE-012038)</i>	21,050,000
Total Amount transferred	<u><u>644,000,000</u></u>

RECURRENT PAYMENTS			Jun 2010 YTD \$000
628100030	Payments from Regional Infrastructure & Headworks Fund (RfR) - Recurrent	MIN-CPID	- 17,280
628100030	Payments from Regional Infrastructure & Headworks Fund (RfR) - Recurrent	DOT-CPID	- 5,510

724100032	Payment from Regional Community Services Fund (RFR) - Capital	RDL-CPID	-
724100032	Payment from Regional Community Services Fund (RFR) - Capital	SHC-CPID	-
724100032	Payment from Regional Community Services Fund (RFR) - Capital	SWD-CPID	-
724100033	Payments from Royalties for Regions (RFR) Unallocated - Capital	PDC-CPID	-
724100033	Payments from Royalties for Regions (RFR) Unallocated - Capital	PDL-CPID	-
724100033	Payments from Royalties for Regions (RFR) Unallocated - Capital	PUD-CPID	-
724100033	Payments from Royalties for Regions (RFR) Unallocated - Capital	RDL-CPID	-
724100033	Payments from Royalties for Regions (RFR) Unallocated - Capital	SHC-CPID	-
724100033	Payments from Royalties for Regions (RFR) Unallocated - Capital	SWD-CPID	-
724100033	Payments from Royalties for Regions (RFR) Unallocated - Capital	WDC-CPID	-
		TOTAL	- 120,565
		Grand Total	- 253,966

**ROYALTIES FOR REGIONS SPA BALANCES
FOR THE MONTH OF JUNE 2010**

TABS A/C	TABS A/C Description	Agency	Actual Year To Date		
			Dr	Cr	Total
			\$'000	\$'000	\$'000
<u>Regional Infrastructure & Headworks Fund</u>					
DOW-048310	RFR APPROP CA-RIHF	WATER	0	0	0
DOW-048311	RFR RECURRENT PAYMENT-RIHF	WATER	0	0	0
DOW-048312	RFR CAPITAL PAYMENT-RIHF	WATER	0	0	0
DOW-048313	RFR RECUR APPROP FROM CA-RIHF	WATER	0	0	0
DOW-048314	RFR CAP APPROP FROM CA-RIHF	WATER	0	0	0
DOW-048315	RFR RECUR TFR FROM UNALLO-RIHF	WATER	0	0	0
DOW-048316	RFR CAP TFR FROM UNALLOC-RIHF	WATER	0	0	0
DOW-048317	RFR RECUR TFR TO UNALLOC-RIHF	WATER	0	0	0
DOW-048318	RFR CAP TFR TO UNALLOC-RIHF	WATER	0	0	0
Total			0	0	0
DSD-048310	RFR APPROPRIATION FROM CA-RIHF	STATE DEVELOPMENT	21,000	-21,000	0
DSD-048311	RFR RECURRENT PAYMENT-RIHF	STATE DEVELOPMENT	1,970	0	1,970
DSD-048312	RFR CAPITAL PAYMENT-RIHF	STATE DEVELOPMENT	26,814	0	26,814
DSD-048313	RFR RECUR APPROP FROM CA-RIHF	STATE DEVELOPMENT	0	-1,970	-1,970
DSD-048314	RFR CAP APPROP FROM CA-RIHF	STATE DEVELOPMENT	64,216	-162,246	-98,030
DSD-048315	RFR RECUR TFR FROM UNALLO-RIHF	STATE DEVELOPMENT	0	0	0

DSD-048316	RFR CAP TFR FROM UNALLOC-RIHF	STATE DEVELOPMENT	0	0	0
DSD-048317	RFR RECUR TFR TO UNALLOC-RIHF	STATE DEVELOPMENT	0	0	0
DSD-048318	RFR CAP TFR TO UNALLOC-RIHF	STATE DEVELOPMENT	0	0	0
Total			114,000	-185,216	-71,216
EDD-048310	RFR APPROPRIATION FROM CA-RIHF	EDUCATION AND TRAINING	0	0	0
EDD-048311	RFR RECURRENT PAYMENT-RIHF	EDUCATION AND TRAINING	0	0	0
EDD-048312	RFR CAPITAL PAYMENT-RIHF	EDUCATION AND TRAINING	0	0	0
EDD-048313	RFR RECUR APPROP FROM CA-RIHF	EDUCATION AND TRAINING	0	0	0
EDD-048314	RFR CAP APPROP FROM CA-RIHF	EDUCATION AND TRAINING	0	0	0
EDD-048315	RFR RECUR TFR FROM UNALLO-RIHF	EDUCATION AND TRAINING	0	0	0
EDD-048316	RFR CAP TFR FROM UNALLOC-RIHF	EDUCATION AND TRAINING	0	0	0
EDD-048317	RFR RECUR TFR TO UNALLOC-RIHF	EDUCATION AND TRAINING	0	0	0
EDD-048318	RFR CAP TFR TO UNALLOC-RIHF	EDUCATION AND TRAINING	0	0	0
Total			0	0	0
EPP-048310	RFR APPROP CA-RIHF	OFFICE OF ENERGY	0	0	0
EPP-048311	RFR RECURRENT PAYMENT-RIHF	OFFICE OF ENERGY	125	0	125
EPP-048312	RFR CAPITAL PAYMENT-RIHF	OFFICE OF ENERGY	0	0	0
EPP-048313	RFR RECUR APPROP FROM CA-RIHF	OFFICE OF ENERGY	0	-125	-125
EPP-048314	RFR CAP APPROP FROM CA-RIHF	OFFICE OF ENERGY	0	0	0
EPP-048315	RFR RECUR TFR FROM UNALLO-RIHF	OFFICE OF ENERGY	0	0	0
EPP-048316	RFR CAP TFR FROM UNALLOC-RIHF	OFFICE OF ENERGY	0	0	0
EPP-048317	RFR RECUR TFR TO UNALLOC-RIHF	OFFICE OF ENERGY	0	0	0
EPP-048318	RFR CAP TFR TO UNALLOC-RIHF	OFFICE OF ENERGY	0	0	0
Total			125	-125	0
GDC-048310	RFR APPROPRIATION FROM CA-RIHF	GASCOYNE DEVELOPMENT COMMISS	7,940	-7,940	0
GDC-048311	RFR RECURRENT PAYMENT-RIHF	GASCOYNE DEVELOPMENT COMMISS	5,565	0	5,565
GDC-048312	RFR CAPITAL PAYMENT-RIHF	GASCOYNE DEVELOPMENT COMMISS	0	0	0
GDC-048313	RFR RECUR APPROP FROM CA-RIHF	GASCOYNE DEVELOPMENT COMMISS	0	-5,565	-5,565
GDC-	RFR CAP APPROP FROM CA-RIHF	GASCOYNE DEVELOPMENT COMMISS	0	0	0

048314					
GDC-048315	RFR RECUR TFR FROM UNALLO-RIHF	GASCOYNE DEVELOPMENT COMMISS	0	0	0
GDC-048316	RFR CAP TFR FROM UNALLOC-RIHF	GASCOYNE DEVELOPMENT COMMISS	0	0	0
GDC-048317	RFR RECUR TFR TO UNALLOC-RIHF	GASCOYNE DEVELOPMENT COMMISS	0	0	0
GDC-048318	RFR CAP TFR TO UNALLOC-RIHF	GASCOYNE DEVELOPMENT COMMISS	0	0	0
		Total	13,505	-13,505	0
GED-048310	RFR APPROPRIATION FROM CA-RIHF	GOLDFIELDS-ESPERANCE DEV COMM	7,940	-7,940	0
GED-048311	RFR RECURRENT PAYMENT-RIHF	GOLDFIELDS-ESPERANCE DEV COMM	5,565	0	5,565
GED-048312	RFR CAPITAL PAYMENT-RIHF	GOLDFIELDS-ESPERANCE DEV COMM	0	0	0
GED-048313	RFR RECUR APPROP FROM CA-RIHF	GOLDFIELDS-ESPERANCE DEV COMM	0	-5,565	-5,565
GED-048314	RFR CAP APPROP FROM CA-RIHF	GOLDFIELDS-ESPERANCE DEV COMM	0	0	0
GED-048315	RFR RECUR TFR FROM UNALLO-RIHF	GOLDFIELDS-ESPERANCE DEV COMM	0	0	0
GED-048316	RFR CAP TFR FROM UNALLOC-RIHF	GOLDFIELDS-ESPERANCE DEV COMM	0	0	0
GED-048317	RFR RECUR TFR TO UNALLOC-RIHF	GOLDFIELDS-ESPERANCE DEV COMM	0	0	0
GED-048318	RFR CAP TFR TO UNALLOC-RIHF	GOLDFIELDS-ESPERANCE DEV COMM	0	0	0
		Total	13,505	-13,505	0
GMW-048310	RFR APPROPRIATION FROM CA-RIHF	MID WEST DEVELOPMENT COMMISS	7,940	-7,940	0
GMW-048311	RFR RECURRENT PAYMENT-RIHF	MID WEST DEVELOPMENT COMMISS	5,565	0	5,565
GMW-048312	RFR CAPITAL PAYMENT-RIHF	MID WEST DEVELOPMENT COMMISS	0	0	0
GMW-048313	RFR RECUR APPROP FROM CA-RIHF	MID WEST DEVELOPMENT COMMISS	0	-5,565	-5,565
GMW-048314	RFR CAP APPROP FROM CA-RIHF	MID WEST DEVELOPMENT COMMISS	0	0	0
GMW-048315	RFR RECUR TFR FROM UNALLO-RIHF	MID WEST DEVELOPMENT COMMISS	0	0	0
GMW-048316	RFR CAP TFR FROM UNALLOC-RIHF	MID WEST DEVELOPMENT COMMISS	0	0	0
GMW-048317	RFR RECUR TFR TO UNALLOC-RIHF	MID WEST DEVELOPMENT COMMISS	0	0	0
GMW-048318	RFR CAP TFR TO UNALLOC-RIHF	MID WEST DEVELOPMENT COMMISS	0	0	0

Total	13,505	-13,505	0
--------------	--------	---------	---

GSA-048310	RFR APPROPRIATION FROM CA-RIHF	GREAT SOUTHERN DEV COMM	7,940	-7,940	0
GSA-048311	RFR RECURRENT PAYMENT-RIHF	GREAT SOUTHERN DEV COMM	5,565	0	5,565
GSA-048312	RFR CAPITAL PAYMENT-RIHF	GREAT SOUTHERN DEV COMM	0	0	0
GSA-048313	RFR RECUR APPROP FROM CA-RIHF	GREAT SOUTHERN DEV COMM	0	-5,565	-5,565
GSA-048314	RFR CAP APPROP FROM CA-RIHF	GREAT SOUTHERN DEV COMM	0	0	0
GSA-048315	RFR RECUR TFR FROM UNALLO-RIHF	GREAT SOUTHERN DEV COMM	0	0	0
GSA-048316	RFR CAP TFR FROM UNALLOC-RIHF	GREAT SOUTHERN DEV COMM	0	0	0
GSA-048317	RFR RECUR TFR TO UNALLOC-RIHF	GREAT SOUTHERN DEV COMM	0	0	0
GSA-048318	RFR CAP TFR TO UNALLOC-RIHF	GREAT SOUTHERN DEV COMM	0	0	0

Total	13,505	-13,505	0
--------------	--------	---------	---

DOH-048310	RFR APPROPRIATION FROM CA-RIHF	WA HEALTH	3,100	-3,100	0
DOH-048311	RFR RECURRENT PAYMENT-RIHF	WA HEALTH	4,837	0	4,837
DOH-048312	RFR CAPITAL PAYMENT-RIHF	WA HEALTH	9,651	0	9,651
DOH-048313	RFR RECUR APPROP FROM CA-RIHF	WA HEALTH	0	-4,837	-4,837
DOH-048314	RFR CAP APPROP FROM CA-RIHF	WA HEALTH	0	-9,651	-9,651
DOH-048315	RFR RECUR TFR FROM UNALLO-RIHF	WA HEALTH	0	0	0
DOH-048316	RFR CAP TFR FROM UNALLOC-RIHF	WA HEALTH	0	0	0
DOH-048317	RFR RECUR TFR TO UNALLOC-RIHF	WA HEALTH	0	0	0
DOH-048318	RFR CAP TFR TO UNALLOC-RIHF	WA HEALTH	0	0	0

Total	17,588	-17,588	0
--------------	--------	---------	---

DOT-048310	RFR APPROPRIATION FROM CA-RIHF	TRANSPORT	0	0	0
DOT-048311	RFR RECURRENT PAYMENT-RIHF	TRANSPORT	5,510	0	5,510
DOT-048312	RFR CAPITAL PAYMENT-RIHF	TRANSPORT	0	0	0
DOT-	RFR RECUR APPROP FROM CA-RIHF	TRANSPORT	0	-5,510	-5,510

048313						
DOT-						
048314	RFR CAP APPROP FROM CA-RIHF	TRANSPORT	0	0	0	
DOT-						
048315	RFR RECUR TFR FROM UNALLO-RIHF	TRANSPORT	0	0	0	
DOT-						
048316	RFR CAP TFR FROM UNALLOC-RIHF	TRANSPORT	0	0	0	
DOT-						
048317	RFR RECUR TFR TO UNALLOC-RIHF	TRANSPORT	0	0	0	
DOT-						
048318	RFR CAP TFR TO UNALLOC-RIHF	TRANSPORT	0	0	0	
			Total	5,510	-5,510	0
HOR-						
048310	RFR APPROP CA-RIHF		35,000	-35,000	0	
HOR-						
048311	RFR RECURRENT PAYMENT-RIHF		0	0	0	
HOR-						
048312	RFR CAPITAL PAYMENT-RIHF		35,000	0	35,000	
HOR-						
048313	RFR RECUR APPROP FROM CA-RIHF		0	0	0	
HOR-						
048314	RFR CAP APPROP FROM CA-RIHF		65,000	-165,000	-100,000	
HOR-						
048315	RFR RECUR TFR FROM UNALLO-RIHF		0	0	0	
HOR-						
048316	RFR CAP TFR FROM UNALLOC-RIHF		0	0	0	
HOR-						
048317	RFR RECUR TFR TO UNALLOC-RIHF		0	0	0	
HOR-						
048318	RFR CAP TFR TO UNALLOC-RIHF		0	0	0	
			Total	135,000	-200,000	-65,000
KDC-						
048310	RFR APPROPRIATION FROM CA-RIHF	KIMBERLEY DEVELOP COMMISS	7,940	-7,940	0	
KDC-						
048311	RFR RECURRENT PAYMENT-RIHF	KIMBERLEY DEVELOP COMMISS	22,065	0	22,065	
KDC-						
048312	RFR CAPITAL PAYMENT-RIHF	KIMBERLEY DEVELOP COMMISS	0	0	0	
KDC-						
048313	RFR RECUR APPROP FROM CA-RIHF	KIMBERLEY DEVELOP COMMISS	0	-22,065	-22,065	
KDC-						
048314	RFR CAP APPROP FROM CA-RIHF	KIMBERLEY DEVELOP COMMISS	0	0	0	
KDC-						
048315	RFR RECUR TFR FROM UNALLO-RIHF	KIMBERLEY DEVELOP COMMISS	0	0	0	
KDC-						
048316	RFR CAP TFR FROM UNALLOC-RIHF	KIMBERLEY DEVELOP COMMISS	0	0	0	
KDC-						
048317	RFR RECUR TFR TO UNALLOC-RIHF	KIMBERLEY DEVELOP COMMISS	0	0	0	

KDC-048318	RFR CAP TFR TO UNALLOC-RIHF	KIMBERLEY DEVELOP COMMISS	0	0	0
Total			30,005	-30,005	0
LDA-048310	RFR APPROPRIATION FROM CA-RIHF		7,400	-7,400	0
LDA-048311	RFR RECURRENT PAYMENT-RIHF		9,805	0	9,805
LDA-048312	RFR CAPITAL PAYMENT-RIHF		0	0	0
LDA-048313	RFR RECUR APPROP FROM CA-RIHF		0	-9,805	-9,805
LDA-048314	RFR CAP APPROP FROM CA-RIHF		0	0	0
LDA-048315	RFR RECUR TFR FROM UNALLO-RIHF		0	0	0
LDA-048316	RFR CAP TFR FROM UNALLOC-RIHF		0	0	0
LDA-048317	RFR RECUR TFR TO UNALLOC-RIHF		0	0	0
LDA-048318	RFR CAP TFR TO UNALLOC-RIHF		0	0	0
Total			17,205	-17,205	0
LGA-048310	RFR APPROPRIATION FROM CA-RIHF	LOCAL GOVERNMENT	240,540	-240,540	0
LGA-048311	RFR RECURRENT PAYMENT-RIHF	LOCAL GOVERNMENT	87,040	-9,000	78,040
LGA-048312	RFR CAPITAL PAYMENT-RIHF	LOCAL GOVERNMENT	0	0	0
LGA-048313	RFR RECUR APPROP FROM CA-RIHF	LOCAL GOVERNMENT	9,000	-87,040	-78,040
LGA-048314	RFR CAP APPROP FROM CA-RIHF	LOCAL GOVERNMENT	0	0	0
LGA-048315	RFR RECUR TFR FROM UNALLO-RIHF	LOCAL GOVERNMENT	0	0	0
LGA-048316	RFR CAP TFR FROM UNALLOC-RIHF	LOCAL GOVERNMENT	0	0	0
LGA-048317	RFR RECUR TFR TO UNALLOC-RIHF	LOCAL GOVERNMENT	0	0	0
LGA-048318	RFR CAP TFR TO UNALLOC-RIHF	LOCAL GOVERNMENT	0	0	0
Total			336,580	-336,580	0
DIR-048310	RFR APPROPRIATION FROM CA-RIHF	MINES AND PETROLEUM	2,800	-2,800	0
DIR-048311	RFR RECURRENT PAYMENT-RIHF	MINES AND PETROLEUM	19,180	0	19,180
DIR-048312	RFR CAPITAL PAYMENT-RIHF	MINES AND PETROLEUM	0	0	0
DIR-048313	RFR RECUR APPROP FROM CA-RIHF	MINES AND PETROLEUM	0	-19,180	-19,180
DIR-048314	RFR CAP APPROP FROM CA-RIHF	MINES AND PETROLEUM	0	0	0
DIR-048315	RFR RECUR TFR FROM UNALLO-RIHF	MINES AND PETROLEUM	0	0	0
DIR-048316	RFR CAP TFR FROM UNALLOC-RIHF	MINES AND PETROLEUM	0	0	0
DIR-048317	RFR RECUR TFR TO UNALLOC-RIHF	MINES AND PETROLEUM	0	0	0
DIR-048318	RFR CAP TFR TO UNALLOC-RIHF	MINES AND PETROLEUM	0	0	0
Total			21,980	-21,980	0
PDC-048310	RFR APPROPRIATION FROM CA-RIHF		7,940	-7,940	0
PDC-048311	RFR RECURRENT PAYMENT-RIHF		5,815	0	5,815
PDC-048312	RFR CAPITAL PAYMENT-RIHF		0	0	0
PDC-	RFR RECUR APPROP FROM CA-RIHF		0	-5,815	-5,815

048313						
PDC-						
048314	RFR CAP APPROP FROM CA-RIHF		0	0	0	
PDC-						
048315	RFR RECUR TFR FROM UNALLO-RIHF		0	0	0	
PDC-						
048316	RFR CAP TFR FROM UNALLOC-RIHF		0	0	0	
PDC-						
048317	RFR RECUR TFR TO UNALLOC-RIHF		0	0	0	
PDC-						
048318	RFR CAP TFR TO UNALLOC-RIHF		0	0	0	
			Total	13,755	-13,755	0
PEL-048310	RFR APPROPRIATION FROM CA-RIHF	PEEL DEVELOPMENT COMMISSION	7,940	-7,940	0	
PEL-048311	RFR RECURRENT PAYMENT-RIHF	PEEL DEVELOPMENT COMMISSION	5,565	0	5,565	
PEL-048312	RFR CAPITAL PAYMENT-RIHF	PEEL DEVELOPMENT COMMISSION	0	0	0	
PEL-048313	RFR RECUR APPROP FROM CA-RIHF	PEEL DEVELOPMENT COMMISSION	0	-5,565	-5,565	
PEL-048314	RFR CAP APPROP FROM CA-RIHF	PEEL DEVELOPMENT COMMISSION	0	0	0	
PEL-048315	RFR RECUR TFR FROM UNALLO-RIHF	PEEL DEVELOPMENT COMMISSION	0	0	0	
PEL-048316	RFR CAP TFR FROM UNALLOC-RIHF	PEEL DEVELOPMENT COMMISSION	0	0	0	
PEL-048317	RFR RECUR TFR TO UNALLOC-RIHF	PEEL DEVELOPMENT COMMISSION	0	0	0	
PEL-048318	RFR CAP TFR TO UNALLOC-RIHF	PEEL DEVELOPMENT COMMISSION	0	0	0	
			Total	13,505	-13,505	0
DPI-048310	RFR APPROPRIATION FROM CA-RIHF	PLANNING	1,460	-1,460	0	
DPI-048311	RFR RECURRENT PAYMENT-RIHF	PLANNING	460	0	460	
DPI-048312	RFR CAPITAL PAYMENT-RIHF	PLANNING	0	0	0	
DPI-048313	RFR RECUR APPROP FROM CA-RIHF	PLANNING	0	-960	-960	
DPI-048314	RFR CAP APPROP FROM CA-RIHF	PLANNING	0	0	0	
DPI-048315	RFR RECUR TFR FROM UNALLO-RIHF	PLANNING	0	0	0	
DPI-048316	RFR CAP TFR FROM UNALLOC-RIHF	PLANNING	0	0	0	
DPI-048317	RFR RECUR TFR TO UNALLOC-RIHF	PLANNING	0	0	0	
DPI-048318	RFR CAP TFR TO UNALLOC-RIHF	PLANNING	0	0	0	
			Total	1,920	-2,420	-500
RDL-048310	RFR APPROPRIATION FROM CA-RIHF	REGIONAL DEVELOPMENT AND LANDS	0	0	0	
RDL-048311	RFR RECURRENT PAYMENT-RIHF	REGIONAL DEVELOPMENT AND LANDS	9,317	0	9,317	
RDL-048312	RFR CAPITAL PAYMENT-RIHF	REGIONAL DEVELOPMENT AND LANDS	0	0	0	
RDL-048313	RFR RECUR APPROP FROM CA-RIHF	REGIONAL DEVELOPMENT AND LANDS	0	-14,317	-14,317	
RDL-048314	RFR CAP APPROP FROM CA-RIHF	REGIONAL DEVELOPMENT AND LANDS	16,005	-32,010	-16,005	
RDL-048315	RFR RECUR TFR FROM UNALLO-RIHF	REGIONAL DEVELOPMENT AND LANDS	0	0	0	
RDL-048316	RFR CAP TFR FROM UNALLOC-RIHF	REGIONAL DEVELOPMENT AND LANDS	0	0	0	
RDL-048317	RFR RECUR TFR TO UNALLOC-RIHF	REGIONAL DEVELOPMENT AND LANDS	0	0	0	
RDL-048318	RFR CAP TFR TO UNALLOC-RIHF	REGIONAL DEVELOPMENT AND LANDS	0	0	0	

Total	25,322	-46,327	-21,005
--------------	--------	---------	---------

HOU-048310	RFR APPROPRIATION FROM CA-RIHF	HOUSING AUTHORITY	40,000	-40,000	0
HOU-048311	RFR RECURRENT PAYMENT-RIHF	HOUSING AUTHORITY	0	0	0
HOU-048312	RFR CAPITAL PAYMENT-RIHF	HOUSING AUTHORITY	114,000	0	114,000
HOU-048313	RFR RECUR APPROP FROM CA-RIHF	HOUSING AUTHORITY	0	0	0
HOU-048314	RFR CAP APPROP FROM CA-RIHF	HOUSING AUTHORITY	17,000	-148,000	-131,000
HOU-048315	RFR RECUR TFR FROM UNALLO-RIHF	HOUSING AUTHORITY	0	0	0
HOU-048316	RFR CAP TFR FROM UNALLOC-RIHF	HOUSING AUTHORITY	0	0	0
HOU-048317	RFR RECUR TFR TO UNALLOC-RIHF	HOUSING AUTHORITY	0	0	0
HOU-048318	RFR CAP TFR TO UNALLOC-RIHF	HOUSING AUTHORITY	0	0	0

Total	171,000	-188,000	-17,000
--------------	---------	----------	---------

SDA-048310	RFR APPROPRIATION FROM CA-RIHF	SOUTH WEST DEVELOPMENT COMMISS	7,940	-7,940	0
SDA-048311	RFR RECURRENT PAYMENT-RIHF	SOUTH WEST DEVELOPMENT COMMISS	5,565	0	5,565
SDA-048312	RFR CAPITAL PAYMENT-RIHF	SOUTH WEST DEVELOPMENT COMMISS	0	0	0
SDA-048313	RFR RECUR APPROP FROM CA-RIHF	SOUTH WEST DEVELOPMENT COMMISS	0	-5,565	-5,565
SDA-048314	RFR CAP APPROP FROM CA-RIHF	SOUTH WEST DEVELOPMENT COMMISS	0	0	0
SDA-048315	RFR RECUR TFR FROM UNALLO-RIHF	SOUTH WEST DEVELOPMENT COMMISS	0	0	0
SDA-048316	RFR CAP TFR FROM UNALLOC-RIHF	SOUTH WEST DEVELOPMENT COMMISS	0	0	0
SDA-048317	RFR RECUR TFR TO UNALLOC-RIHF	SOUTH WEST DEVELOPMENT COMMISS	0	0	0
SDA-048318	RFR CAP TFR TO UNALLOC-RIHF	SOUTH WEST DEVELOPMENT COMMISS	0	0	0

Total	13,505	-13,505	0
--------------	--------	---------	---

WDC-048310	RFR APPROPRIATION FROM CA-RIHF	WHEATBELT DEVELOP COMMISSION	7,940	-7,940	0
WDC-048311	RFR RECURRENT PAYMENT-RIHF	WHEATBELT DEVELOP COMMISSION	5,565	0	5,565
WDC-048312	RFR CAPITAL PAYMENT-RIHF	WHEATBELT DEVELOP COMMISSION	0	0	0
WDC-	RFR RECUR APPROP FROM CA-RIHF	WHEATBELT DEVELOP COMMISSION	0	-5,565	-5,565

048313					
WDC-					
048314	RFR CAP APPROP FROM CA-RIHF	WHEATBELT DEVELOP COMMISSION	0	0	0
WDC-					
048315	RFR RECUR TFR FROM UNALLO-RIHF	WHEATBELT DEVELOP COMMISSION	0	0	0
WDC-					
048316	RFR CAP TFR FROM UNALLOC-RIHF	WHEATBELT DEVELOP COMMISSION	0	0	0
WDC-					
048317	RFR RECUR TFR TO UNALLOC-RIHF	WHEATBELT DEVELOP COMMISSION	0	0	0
WDC-					
048318	RFR CAP TFR TO UNALLOC-RIHF	WHEATBELT DEVELOP COMMISSION	0	0	0

Total			13,505	-13,505	0
Regional Infrastructure & Headworks Fund					
Total			984,525	-1,159,246	-174,721
TIMS No. 111 200 030 TSYA-CPID					

MWS-					
048314	RFR CAP APPROP FROM CA-RIHF	Water Corporation	0	-2,000	-2,000
<i>(This entry not included in report)</i>					
Regional Infrastructure & Headworks Fund					
Total					
TIMS No. 111 200 030 TSYA-CPID (Amended Total)			984,525	-1,161,246	-176,721

Country Local Government Fund

DSD-					
048320	RFR APPROPRIATION FROM CA-CLGF	STATE DEVELOPMENT	0	0	0
DSD-					
048321	RFR RECURRENT PAYMENT-CLGF	STATE DEVELOPMENT	0	0	0
DSD-					
048322	RFR CAPITAL PAYMENT-CLGF	STATE DEVELOPMENT	0	0	0
DSD-					
048323	RFR RECUR APPROP FROM CA-CLGF	STATE DEVELOPMENT	0	0	0
DSD-					
048324	RFR CAP APPROP FROM CA-CLGF	STATE DEVELOPMENT	0	0	0
DSD-					
048325	RFR RECUR TFR FROM UNALLO-CLGF	STATE DEVELOPMENT	0	0	0
DSD-					
048326	RFR CAP TFR FROM UNALLOC-CLGF	STATE DEVELOPMENT	0	0	0
DSD-					
048327	RFR RECUR TFR TO UNALLOC-CLGF	STATE DEVELOPMENT	0	0	0
DSD-					
048328	RFR CAP TFR TO UNALLOC-CLGF	STATE DEVELOPMENT	0	0	0
			Total	0	0
EDD-					
048320	RFR APPROPRIATION FROM CA-CLGF	EDUCATION AND TRAINING	0	0	0
EDD-					
048321	RFR RECURRENT PAYMENT-CLGF	EDUCATION AND TRAINING	0	0	0

EDD-048322	RFR CAPITAL PAYMENT-CLGF	EDUCATION AND TRAINING	0	0	0
EDD-048323	RFR RECUR APPROP FROM CA-CLGF	EDUCATION AND TRAINING	0	0	0
EDD-048324	RFR CAP APPROP FROM CA-CLGF	EDUCATION AND TRAINING	0	0	0
EDD-048325	RFR RECUR TFR FROM UNALLO-CLGF	EDUCATION AND TRAINING	0	0	0
EDD-048326	RFR CAP TFR FROM UNALLOC-CLGF	EDUCATION AND TRAINING	0	0	0
EDD-048327	RFR RECUR TFR TO UNALLOC-CLGF	EDUCATION AND TRAINING	0	0	0
EDD-048328	RFR CAP TFR TO UNALLOC-CLGF	EDUCATION AND TRAINING	0	0	0
Total			0	0	0
EPP-048320	RFR APPROP CA-CLGF	OFFICE OF ENERGY	0	0	0
EPP-048321	RFR RECURRENT PAYMENT-CLGF	OFFICE OF ENERGY	0	0	0
EPP-048322	RFR CAPITAL PAYMENT-CLGF	OFFICE OF ENERGY	0	0	0
EPP-048323	RFR RECUR APPROP FROM CA-CLGF	OFFICE OF ENERGY	0	0	0
EPP-048324	RFR CAP APPROP FROM CA-CLGF	OFFICE OF ENERGY	0	0	0
EPP-048325	RFR RECUR TFR FROM UNALLO-CLGF	OFFICE OF ENERGY	0	0	0
EPP-048326	RFR CAP TFR FROM UNALLOC-CLGF	OFFICE OF ENERGY	0	0	0
EPP-048327	RFR RECUR TFR TO UNALLOC-CLGF	OFFICE OF ENERGY	0	0	0
EPP-048328	RFR CAP TFR TO UNALLOC-CLGF	OFFICE OF ENERGY	0	0	0
Total			0	0	0
GDC-048320	RFR APPROPRIATION FROM CA-CLGF	GASCOYNE DEVELOPMENT COMMISS	0	0	0
GDC-048321	RFR RECURRENT PAYMENT-CLGF	GASCOYNE DEVELOPMENT COMMISS	100	0	100
GDC-048322	RFR CAPITAL PAYMENT-CLGF	GASCOYNE DEVELOPMENT COMMISS	0	0	0
GDC-048323	RFR RECUR APPROP FROM CA-CLGF	GASCOYNE DEVELOPMENT COMMISS	0	-100	-100
GDC-048324	RFR CAP APPROP FROM CA-CLGF	GASCOYNE DEVELOPMENT COMMISS	0	0	0
GDC-048325	RFR RECUR TFR FROM UNALLO-CLGF	GASCOYNE DEVELOPMENT COMMISS	0	0	0
GDC-048326	RFR CAP TFR FROM UNALLOC-CLGF	GASCOYNE DEVELOPMENT COMMISS	0	0	0
GDC-048327	RFR RECUR TFR TO UNALLOC-CLGF	GASCOYNE DEVELOPMENT COMMISS	0	0	0
GDC-048328	RFR CAP TFR TO UNALLOC-CLGF	GASCOYNE DEVELOPMENT COMMISS	0	0	0
Total			100	-100	0
GED-	RFR APPROPRIATION FROM CA-CLGF	GOLDFIELDS-ESPERANCE DEV COMM	0	0	0

048320						
GED-						
048321	RFR RECURRENT PAYMENT-CLGF	GOLDFIELDS-ESPERANCE DEV COMM	100	0	100	
GED-						
048322	RFR CAPITAL PAYMENT-CLGF	GOLDFIELDS-ESPERANCE DEV COMM	0	0	0	
GED-						
048323	RFR RECUR APPROP FROM CA-CLGF	GOLDFIELDS-ESPERANCE DEV COMM	0	-100	-100	
GED-						
048324	RFR CAP APPROP FROM CA-CLGF	GOLDFIELDS-ESPERANCE DEV COMM	0	0	0	
GED-						
048325	RFR RECUR TFR FROM UNALLO-CLGF	GOLDFIELDS-ESPERANCE DEV COMM	0	0	0	
GED-						
048326	RFR CAP TFR FROM UNALLOC-CLGF	GOLDFIELDS-ESPERANCE DEV COMM	0	0	0	
GED-						
048327	RFR RECUR TFR TO UNALLOC-CLGF	GOLDFIELDS-ESPERANCE DEV COMM	0	0	0	
GED-						
048328	RFR CAP TFR TO UNALLOC-CLGF	GOLDFIELDS-ESPERANCE DEV COMM	0	0	0	
			Total	100	-100	0
GMW-						
048320	RFR APPROPRIATION FROM CA-CLGF	MID WEST DEVELOPMENT COMMISS	0	0	0	
GMW-						
048321	RFR RECURRENT PAYMENT-CLGF	MID WEST DEVELOPMENT COMMISS	100	0	100	
GMW-						
048322	RFR CAPITAL PAYMENT-CLGF	MID WEST DEVELOPMENT COMMISS	0	0	0	
GMW-						
048323	RFR RECUR APPROP FROM CA-CLGF	MID WEST DEVELOPMENT COMMISS	0	-100	-100	
GMW-						
048324	RFR CAP APPROP FROM CA-CLGF	MID WEST DEVELOPMENT COMMISS	0	0	0	
GMW-						
048325	RFR RECUR TFR FROM UNALLO-CLGF	MID WEST DEVELOPMENT COMMISS	0	0	0	
GMW-						
048326	RFR CAP TFR FROM UNALLOC-CLGF	MID WEST DEVELOPMENT COMMISS	0	0	0	
GMW-						
048327	RFR RECUR TFR TO UNALLOC-CLGF	MID WEST DEVELOPMENT COMMISS	0	0	0	
GMW-						
048328	RFR CAP TFR TO UNALLOC-CLGF	MID WEST DEVELOPMENT COMMISS	0	0	0	
			Total	100	-100	0
GSA-						
048320	RFR APPROPRIATION FROM CA-CLGF	GREAT SOUTHERN DEV COMM	0	0	0	
GSA-						
048321	RFR RECURRENT PAYMENT-CLGF	GREAT SOUTHERN DEV COMM	100	0	100	
GSA-						
048322	RFR CAPITAL PAYMENT-CLGF	GREAT SOUTHERN DEV COMM	0	0	0	
GSA-						
048323	RFR RECUR APPROP FROM CA-CLGF	GREAT SOUTHERN DEV COMM	0	-100	-100	
GSA-						
048324	RFR CAP APPROP FROM CA-CLGF	GREAT SOUTHERN DEV COMM	0	0	0	

GSA-048325	RFR RECUR TFR FROM UNALLO-CLGF	GREAT SOUTHERN DEV COMM	0	0	0
GSA-048326	RFR CAP TFR FROM UNALLOC-CLGF	GREAT SOUTHERN DEV COMM	0	0	0
GSA-048327	RFR RECUR TFR TO UNALLOC-CLGF	GREAT SOUTHERN DEV COMM	0	0	0
GSA-048328	RFR CAP TFR TO UNALLOC-CLGF	GREAT SOUTHERN DEV COMM	0	0	0
Total			100	-100	0
DOH-048320	RFR APPROPRIATION FROM CA-CLGF	WA HEALTH	0	0	0
DOH-048321	RFR RECURRENT PAYMENT-CLGF	WA HEALTH	0	0	0
DOH-048322	RFR CAPITAL PAYMENT-CLGF	WA HEALTH	0	0	0
DOH-048323	RFR RECUR APPROP FROM CA-CLGF	WA HEALTH	0	0	0
DOH-048324	RFR CAP APPROP FROM CA-CLGF	WA HEALTH	0	0	0
DOH-048325	RFR RECUR TFR FROM UNALLO-CLGF	WA HEALTH	0	0	0
DOH-048326	RFR CAP TFR FROM UNALLOC-CLGF	WA HEALTH	0	0	0
DOH-048327	RFR RECUR TFR TO UNALLOC-CLGF	WA HEALTH	0	0	0
DOH-048328	RFR CAP TFR TO UNALLOC-CLGF	WA HEALTH	0	0	0
Total			0	0	0
DOT-048320	RFR APPROPRIATION FROM CA-CLGF	TRANSPORT	0	0	0
DOT-048321	RFR RECURRENT PAYMENT-CLGF	TRANSPORT	0	0	0
DOT-048322	RFR CAPITAL PAYMENT-CLGF	TRANSPORT	0	0	0
DOT-048323	RFR RECUR APPROP FROM CA-CLGF	TRANSPORT	0	0	0
DOT-048324	RFR CAP APPROP FROM CA-CLGF	TRANSPORT	0	0	0
DOT-048325	RFR RECUR TFR FROM UNALLO-CLGF	TRANSPORT	0	0	0
DOT-048326	RFR CAP TFR FROM UNALLOC-CLGF	TRANSPORT	0	0	0
DOT-048327	RFR RECUR TFR TO UNALLOC-CLGF	TRANSPORT	0	0	0
DOT-048328	RFR CAP TFR TO UNALLOC-CLGF	TRANSPORT	0	0	0
Total			0	0	0

DOW-048320	RFR APPROP CA-CLGF	WATER	0	0	0
DOW-048321	RFR RECURRENT PAYMENT-CLGF	WATER	0	0	0
DOW-048322	RFR CAPITAL PAYMENT-CLGF	WATER	0	0	0
DOW-048323	RFR RECUR APPROP FROM CA-CLGF	WATER	0	0	0
DOW-048324	RFR CAP APPROP FROM CA-CLGF	WATER	0	0	0
DOW-048325	RFR RECUR TFR FROM UNALLO-CLGF	WATER	0	0	0
DOW-048326	RFR CAP TFR FROM UNALLOC-CLGF	WATER	0	0	0
DOW-048327	RFR RECUR TFR TO UNALLOC-CLGF	WATER	0	0	0
DOW-048328	RFR CAP TFR TO UNALLOC-CLGF	WATER	0	0	0
Total			<u>0</u>	<u>0</u>	<u>0</u>
HOR-048320	RFR APPROP CA-CLGF		0	0	0
HOR-048321	RFR RECURRENT PAYMENT-CLGF		0	0	0
HOR-048322	RFR CAPITAL PAYMENT-CLGF		35,000	-35,000	0
HOR-048323	RFR RECUR APPROP FROM CA-CLGF		0	0	0
HOR-048324	RFR CAP APPROP FROM CA-CLGF		0	0	0
HOR-048325	RFR RECUR TFR FROM UNALLO-CLGF		0	0	0
HOR-048326	RFR CAP TFR FROM UNALLOC-CLGF		0	0	0
HOR-048327	RFR RECUR TFR TO UNALLOC-CLGF		0	0	0
HOR-048328	RFR CAP TFR TO UNALLOC-CLGF		0	0	0
Total			<u>35,000</u>	<u>-35,000</u>	<u>0</u>
KDC-048320	RFR APPROPRIATION FROM CA-CLGF	KIMBERLEY DEVELOP COMMISS	0	0	0
KDC-048321	RFR RECURRENT PAYMENT-CLGF	KIMBERLEY DEVELOP COMMISS	100	0	100
KDC-048322	RFR CAPITAL PAYMENT-CLGF	KIMBERLEY DEVELOP COMMISS	0	0	0
KDC-048323	RFR RECUR APPROP FROM CA-CLGF	KIMBERLEY DEVELOP COMMISS	0	-100	-100
KDC-048324	RFR CAP APPROP FROM CA-CLGF	KIMBERLEY DEVELOP COMMISS	0	0	0

KDC-048325	RFR RECUR TFR FROM UNALLO-CLGF	KIMBERLEY DEVELOP COMMISS	0	0	0
KDC-048326	RFR CAP TFR FROM UNALLOC-CLGF	KIMBERLEY DEVELOP COMMISS	0	0	0
KDC-048327	RFR RECUR TFR TO UNALLOC-CLGF	KIMBERLEY DEVELOP COMMISS	0	0	0
KDC-048328	RFR CAP TFR TO UNALLOC-CLGF	KIMBERLEY DEVELOP COMMISS	0	0	0
Total			100	-100	0
LDA-048320	RFR APPROPRIATION FROM CA-CLGF		0	0	0
LDA-048321	RFR RECURRENT PAYMENT-CLGF		0	0	0
LDA-048322	RFR CAPITAL PAYMENT-CLGF		0	0	0
LDA-048323	RFR RECUR APPROP FROM CA-CLGF		0	0	0
LDA-048324	RFR CAP APPROP FROM CA-CLGF		0	0	0
LDA-048325	RFR RECUR TFR FROM UNALLO-CLGF		0	0	0
LDA-048326	RFR CAP TFR FROM UNALLOC-CLGF		0	0	0
LDA-048327	RFR RECUR TFR TO UNALLOC-CLGF		0	0	0
LDA-048328	RFR CAP TFR TO UNALLOC-CLGF		0	0	0
Total			0	0	0
LGA-048320	RFR APPROPRIATION FROM CA-CLGF	LOCAL GOVERNMENT	150,350	-150,350	0
LGA-048321	RFR RECURRENT PAYMENT-CLGF	LOCAL GOVERNMENT	104,975	0	104,975
LGA-048322	RFR CAPITAL PAYMENT-CLGF	LOCAL GOVERNMENT	0	0	0
LGA-048323	RFR RECUR APPROP FROM CA-CLGF	LOCAL GOVERNMENT	0	-104,975	-104,975
LGA-048324	RFR CAP APPROP FROM CA-CLGF	LOCAL GOVERNMENT	0	0	0
LGA-048325	RFR RECUR TFR FROM UNALLO-CLGF	LOCAL GOVERNMENT	0	0	0
LGA-048326	RFR CAP TFR FROM UNALLOC-CLGF	LOCAL GOVERNMENT	0	0	0
LGA-048327	RFR RECUR TFR TO UNALLOC-CLGF	LOCAL GOVERNMENT	0	0	0
LGA-048328	RFR CAP TFR TO UNALLOC-CLGF	LOCAL GOVERNMENT	0	0	0
Total			255,325	-255,325	0
DIR-048320	RFR APPROPRIATION FROM CA-CLGF	MINES AND PETROLEUM	0	0	0
DIR-048321	RFR RECURRENT PAYMENT-CLGF	MINES AND PETROLEUM	0	0	0
DIR-048322	RFR CAPITAL PAYMENT-CLGF	MINES AND PETROLEUM	0	0	0
DIR-048323	RFR RECUR APPROP FROM CA-CLGF	MINES AND PETROLEUM	0	0	0
DIR-048324	RFR CAP APPROP FROM CA-CLGF	MINES AND PETROLEUM	0	0	0
DIR-048325	RFR RECUR TFR FROM UNALLO-CLGF	MINES AND PETROLEUM	0	0	0
DIR-048326	RFR CAP TFR FROM UNALLOC-CLGF	MINES AND PETROLEUM	0	0	0
DIR-048327	RFR RECUR TFR TO UNALLOC-CLGF	MINES AND PETROLEUM	0	0	0
DIR-048328	RFR CAP TFR TO UNALLOC-CLGF	MINES AND PETROLEUM	0	0	0
Total			0	0	0
PDC-	RFR APPROPRIATION FROM CA-CLGF		0	0	0

048320				
PDC-				
048321	RFR RECURRENT PAYMENT-CLGF		100	0
PDC-				100
048322	RFR CAPITAL PAYMENT-CLGF		0	0
PDC-				0
048323	RFR RECUR APPROP FROM CA-CLGF		0	-100
PDC-				-100
048324	RFR CAP APPROP FROM CA-CLGF		0	0
PDC-				0
048325	RFR RECUR TFR FROM UNALLO-CLGF		0	0
PDC-				0
048326	RFR CAP TFR FROM UNALLOC-CLGF		0	0
PDC-				0
048327	RFR RECUR TFR TO UNALLOC-CLGF		0	0
PDC-				0
048328	RFR CAP TFR TO UNALLOC-CLGF		0	0
			Total	
			100	-100
				0
PEL-048320	RFR APPROPRIATION FROM CA-CLGF	PEEL DEVELOPMENT COMMISSION	0	0
PEL-048321	RFR RECURRENT PAYMENT-CLGF	PEEL DEVELOPMENT COMMISSION	100	0
PEL-048322	RFR CAPITAL PAYMENT-CLGF	PEEL DEVELOPMENT COMMISSION	0	0
PEL-048323	RFR RECUR APPROP FROM CA-CLGF	PEEL DEVELOPMENT COMMISSION	0	-100
PEL-048324	RFR CAP APPROP FROM CA-CLGF	PEEL DEVELOPMENT COMMISSION	0	0
PEL-048325	RFR RECUR TFR FROM UNALLO-CLGF	PEEL DEVELOPMENT COMMISSION	0	0
PEL-048326	RFR CAP TFR FROM UNALLOC-CLGF	PEEL DEVELOPMENT COMMISSION	0	0
PEL-048327	RFR RECUR TFR TO UNALLOC-CLGF	PEEL DEVELOPMENT COMMISSION	0	0
PEL-048328	RFR CAP TFR TO UNALLOC-CLGF	PEEL DEVELOPMENT COMMISSION	0	0
			Total	
			100	-100
				0
DPI-048320	RFR APPROPRIATION FROM CA-CLGF	PLANNING	0	0
DPI-048321	RFR RECURRENT PAYMENT-CLGF	PLANNING	0	0
DPI-048322	RFR CAPITAL PAYMENT-CLGF	PLANNING	0	0
DPI-048323	RFR RECUR APPROP FROM CA-CLGF	PLANNING	0	0
DPI-048324	RFR CAP APPROP FROM CA-CLGF	PLANNING	0	0
DPI-048325	RFR RECUR TFR FROM UNALLO-CLGF	PLANNING	0	0
DPI-048326	RFR CAP TFR FROM UNALLOC-CLGF	PLANNING	0	0
DPI-048327	RFR RECUR TFR TO UNALLOC-CLGF	PLANNING	0	0
DPI-048328	RFR CAP TFR TO UNALLOC-CLGF	PLANNING	0	0
			Total	
			0	0
				0
RDL-048320	RFR APPROPRIATION FROM CA-CLGF	REGIONAL DEVELOPMENT AND LANDS	0	0
RDL-048321	RFR RECURRENT PAYMENT-CLGF	REGIONAL DEVELOPMENT AND LANDS	4,125	0
RDL-048322	RFR CAPITAL PAYMENT-CLGF	REGIONAL DEVELOPMENT AND LANDS	0	0
RDL-048323	RFR RECUR APPROP FROM CA-CLGF	REGIONAL DEVELOPMENT AND LANDS	0	-4,125

RDL-048324	RFR CAP APPROP FROM CA-CLGF	REGIONAL DEVELOPMENT AND LANDS	0	0	0
RDL-048325	RFR RECUR TFR FROM UNALLO-CLGF	REGIONAL DEVELOPMENT AND LANDS	0	0	0
RDL-048326	RFR CAP TFR FROM UNALLO-CLGF	REGIONAL DEVELOPMENT AND LANDS	0	0	0
RDL-048327	RFR RECUR TFR TO UNALLO-CLGF	REGIONAL DEVELOPMENT AND LANDS	0	0	0
RDL-048328	RFR CAP TFR TO UNALLO-CLGF	REGIONAL DEVELOPMENT AND LANDS	0	0	0
Total			4,125	-4,125	0
HOU-048320	RFR APPROPRIATION FROM CA-CLGF	HOUSING AUTHORITY	0	0	0
HOU-048321	RFR RECURRENT PAYMENT-CLGF	HOUSING AUTHORITY	0	0	0
HOU-048322	RFR CAPITAL PAYMENT-CLGF	HOUSING AUTHORITY	0	0	0
HOU-048323	RFR RECUR APPROP FROM CA-CLGF	HOUSING AUTHORITY	0	0	0
HOU-048324	RFR CAP APPROP FROM CA-CLGF	HOUSING AUTHORITY	0	0	0
HOU-048325	RFR RECUR TFR FROM UNALLO-CLGF	HOUSING AUTHORITY	0	0	0
HOU-048326	RFR CAP TFR FROM UNALLO-CLGF	HOUSING AUTHORITY	0	0	0
HOU-048327	RFR RECUR TFR TO UNALLO-CLGF	HOUSING AUTHORITY	0	0	0
HOU-048328	RFR CAP TFR TO UNALLO-CLGF	HOUSING AUTHORITY	0	0	0
Total			0	0	0
SDA-048320	RFR APPROPRIATION FROM CA-CLGF	SOUTH WEST DEVELOPMENT COMMISS	0	0	0
SDA-048321	RFR RECURRENT PAYMENT-CLGF	SOUTH WEST DEVELOPMENT COMMISS	100	0	100
SDA-048322	RFR CAPITAL PAYMENT-CLGF	SOUTH WEST DEVELOPMENT COMMISS	0	0	0
SDA-048323	RFR RECUR APPROP FROM CA-CLGF	SOUTH WEST DEVELOPMENT COMMISS	0	-100	-100
SDA-048324	RFR CAP APPROP FROM CA-CLGF	SOUTH WEST DEVELOPMENT COMMISS	0	0	0
SDA-048325	RFR RECUR TFR FROM UNALLO-CLGF	SOUTH WEST DEVELOPMENT COMMISS	0	0	0
SDA-048326	RFR CAP TFR FROM UNALLO-CLGF	SOUTH WEST DEVELOPMENT COMMISS	0	0	0
SDA-048327	RFR RECUR TFR TO UNALLO-CLGF	SOUTH WEST DEVELOPMENT COMMISS	0	0	0
SDA-048328	RFR CAP TFR TO UNALLO-CLGF	SOUTH WEST DEVELOPMENT COMMISS	0	0	0
Total			100	-100	0
WDC-	RFR APPROPRIATION FROM CA-CLGF	WHEATBELT DEVELOP COMMISSION	0	0	0

048320					
WDC-					
048321	RFR RECURRENT PAYMENT-CLGF	WHEATBELT DEVELOP COMMISSION	100	0	100
WDC-					
048322	RFR CAPITAL PAYMENT-CLGF	WHEATBELT DEVELOP COMMISSION	0	0	0
WDC-					
048323	RFR RECUR APPROP FROM CA-CLGF	WHEATBELT DEVELOP COMMISSION	0	-100	-100
WDC-					
048324	RFR CAP APPROP FROM CA-CLGF	WHEATBELT DEVELOP COMMISSION	0	0	0
WDC-					
048325	RFR RECUR TFR FROM UNALLO-CLGF	WHEATBELT DEVELOP COMMISSION	0	0	0
WDC-					
048326	RFR CAP TFR FROM UNALLOC-CLGF	WHEATBELT DEVELOP COMMISSION	0	0	0
WDC-					
048327	RFR RECUR TFR TO UNALLOC-CLGF	WHEATBELT DEVELOP COMMISSION	0	0	0
WDC-					
048328	RFR CAP TFR TO UNALLOC-CLGF	WHEATBELT DEVELOP COMMISSION	0	0	0
Total			100	-100	0
Country Local Government Fund Total			295,350	-295,350	0
TIMS No. 111 200 031 TSYA-CPID					

Regional Community Services Fund

DSD-					
048330	RFR APPROPRIATION FROM CA-RCSF	STATE DEVELOPMENT	0	0	0
DSD-					
048331	RFR RECURRENT PAYMENT-RCSF	STATE DEVELOPMENT	0	0	0
DSD-					
048332	RFR CAPITAL PAYMENT-RCSF	STATE DEVELOPMENT	0	0	0
DSD-					
048333	RFR RECUR APPROP FROM CA-RCSF	STATE DEVELOPMENT	0	0	0
DSD-					
048334	RFR CAP APPROP FROM CA-RCSF	STATE DEVELOPMENT	0	0	0
DSD-					
048335	RFR RECUR TFR FROM UNALLO-RCSF	STATE DEVELOPMENT	0	0	0
DSD-					
048336	RFR CAP TFR FROM UNALLOC-RCSF	STATE DEVELOPMENT	0	0	0
DSD-					
048337	RFR RECUR TFR TO UNALLOC-RCSF	STATE DEVELOPMENT	0	0	0
DSD-					
048338	RFR CAP TFR TO UNALLOC-RCSF	STATE DEVELOPMENT	0	0	0
Total			0	0	0
EDD-					
048330	RFR APPROPRIATION FROM CA-RCSF	EDUCATION AND TRAINING	0	0	0
EDD-					
048331	RFR RECURRENT PAYMENT-RCSF	EDUCATION AND TRAINING	1,800	0	1,800
EDD-					
048332	RFR CAPITAL PAYMENT-RCSF	EDUCATION AND TRAINING	0	0	0
EDD-					
048332	RFR RECUR APPROP FROM CA-RCSF	EDUCATION AND TRAINING	195	-2,190	-1,995

048333					
EDD-					
048334	RFR CAP APPROP FROM CA-RCSF	EDUCATION AND TRAINING	0	0	0
EDD-					
048335	RFR RECUR TFR FROM UNALLO-RCSF	EDUCATION AND TRAINING	0	0	0
EDD-					
048336	RFR CAP TFR FROM UNALLOC-RCSF	EDUCATION AND TRAINING	0	0	0
EDD-					
048337	RFR RECUR TFR TO UNALLOC-RCSF	EDUCATION AND TRAINING	0	0	0
EDD-					
048338	RFR CAP TFR TO UNALLOC-RCSF	EDUCATION AND TRAINING	0	0	0
Total			1,995	-2,190	-195
EPP-048330	RFR APPROP CA-RCSF	OFFICE OF ENERGY	0	0	0
EPP-048331	RFR RECURRENT PAYMENT-RCSF	OFFICE OF ENERGY	0	0	0
EPP-048332	RFR CAPITAL PAYMENT-RCSF	OFFICE OF ENERGY	0	0	0
EPP-048333	RFR RECUR APPROP FROM CA-RCSF	OFFICE OF ENERGY	0	0	0
EPP-048334	RFR CAP APPROP FROM CA-RCSF	OFFICE OF ENERGY	0	0	0
EPP-048335	RFR RECUR TFR FROM UNALLO-RCSF	OFFICE OF ENERGY	0	0	0
EPP-048336	RFR CAP TFR FROM UNALLOC-RCSF	OFFICE OF ENERGY	0	0	0
EPP-048337	RFR RECUR TFR TO UNALLOC-RCSF	OFFICE OF ENERGY	0	0	0
EPP-048338	RFR CAP TFR TO UNALLOC-RCSF	OFFICE OF ENERGY	0	0	0
Total			0	0	0
GDC-					
048330	RFR APPROPRIATION FROM CA-RCSF	GASCOYNE DEVELOPMENT COMMISS	0	0	0
GDC-					
048331	RFR RECURRENT PAYMENT-RCSF	GASCOYNE DEVELOPMENT COMMISS	0	0	0
GDC-					
048332	RFR CAPITAL PAYMENT-RCSF	GASCOYNE DEVELOPMENT COMMISS	0	0	0
GDC-					
048333	RFR RECUR APPROP FROM CA-RCSF	GASCOYNE DEVELOPMENT COMMISS	0	0	0
GDC-					
048334	RFR CAP APPROP FROM CA-RCSF	GASCOYNE DEVELOPMENT COMMISS	0	0	0
GDC-					
048335	RFR RECUR TFR FROM UNALLO-RCSF	GASCOYNE DEVELOPMENT COMMISS	0	0	0
GDC-					
048336	RFR CAP TFR FROM UNALLOC-RCSF	GASCOYNE DEVELOPMENT COMMISS	0	0	0
GDC-					
048337	RFR RECUR TFR TO UNALLOC-RCSF	GASCOYNE DEVELOPMENT COMMISS	0	0	0
GDC-					
048338	RFR CAP TFR TO UNALLOC-RCSF	GASCOYNE DEVELOPMENT COMMISS	0	0	0
Total			0	0	0
GED-					
048330	RFR APPROPRIATION FROM CA-RCSF	GOLDFIELDS-ESPERANCE DEV COMM	0	0	0
GED-					
048331	RFR RECURRENT PAYMENT-RCSF	GOLDFIELDS-ESPERANCE DEV COMM	0	0	0

GED-048332	RFR CAPITAL PAYMENT-RCSF	GOLDFIELDS-ESPERANCE DEV COMM	0	0	0
GED-048333	RFR RECUR APPROP FROM CA-RCSF	GOLDFIELDS-ESPERANCE DEV COMM	0	0	0
GED-048334	RFR CAP APPROP FROM CA-RCSF	GOLDFIELDS-ESPERANCE DEV COMM	0	0	0
GED-048335	RFR RECUR TFR FROM UNALLO-RCSF	GOLDFIELDS-ESPERANCE DEV COMM	0	0	0
GED-048336	RFR CAP TFR FROM UNALLOC-RCSF	GOLDFIELDS-ESPERANCE DEV COMM	0	0	0
GED-048337	RFR RECUR TFR TO UNALLOC-RCSF	GOLDFIELDS-ESPERANCE DEV COMM	0	0	0
GED-048338	RFR CAP TFR TO UNALLOC-RCSF	GOLDFIELDS-ESPERANCE DEV COMM	0	0	0
			Total	<hr/>	<hr/>
			0	0	0
GMW-048330	RFR APPROPRIATION FROM CA-RCSF	MID WEST DEVELOPMENT COMMISS	0	0	0
GMW-048331	RFR RECURRENT PAYMENT-RCSF	MID WEST DEVELOPMENT COMMISS	0	0	0
GMW-048332	RFR CAPITAL PAYMENT-RCSF	MID WEST DEVELOPMENT COMMISS	0	0	0
GMW-048333	RFR RECUR APPROP FROM CA-RCSF	MID WEST DEVELOPMENT COMMISS	0	0	0
GMW-048334	RFR CAP APPROP FROM CA-RCSF	MID WEST DEVELOPMENT COMMISS	0	0	0
GMW-048335	RFR RECUR TFR FROM UNALLO-RCSF	MID WEST DEVELOPMENT COMMISS	0	0	0
GMW-048336	RFR CAP TFR FROM UNALLOC-RCSF	MID WEST DEVELOPMENT COMMISS	0	0	0
GMW-048337	RFR RECUR TFR TO UNALLOC-RCSF	MID WEST DEVELOPMENT COMMISS	0	0	0
GMW-048338	RFR CAP TFR TO UNALLOC-RCSF	MID WEST DEVELOPMENT COMMISS	0	0	0
			Total	<hr/>	<hr/>
			0	0	0
GSA-048330	RFR APPROPRIATION FROM CA-RCSF	GREAT SOUTHERN DEV COMM	0	0	0
GSA-048331	RFR RECURRENT PAYMENT-RCSF	GREAT SOUTHERN DEV COMM	0	0	0
GSA-048332	RFR CAPITAL PAYMENT-RCSF	GREAT SOUTHERN DEV COMM	0	0	0
GSA-048333	RFR RECUR APPROP FROM CA-RCSF	GREAT SOUTHERN DEV COMM	0	0	0
GSA-048334	RFR CAP APPROP FROM CA-RCSF	GREAT SOUTHERN DEV COMM	0	0	0
GSA-048335	RFR RECUR TFR FROM UNALLO-RCSF	GREAT SOUTHERN DEV COMM	0	0	0
GSA-048336	RFR CAP TFR FROM UNALLOC-RCSF	GREAT SOUTHERN DEV COMM	0	0	0

GSA-048337	RFR RECUR TFR TO UNALLOC-RCSF	GREAT SOUTHERN DEV COMM	0	0	0
GSA-048338	RFR CAP TFR TO UNALLOC-RCSF	GREAT SOUTHERN DEV COMM	0	0	0
Total			0	0	0
DOH-048330	RFR APPROPRIATION FROM CA-RCSF	WA HEALTH	14,434	-14,434	0
DOH-048331	RFR RECURRENT PAYMENT-RCSF	WA HEALTH	27,699	0	27,699
DOH-048332	RFR CAPITAL PAYMENT-RCSF	WA HEALTH	0	0	0
DOH-048333	RFR RECUR APPROP FROM CA-RCSF	WA HEALTH	0	-27,699	-27,699
DOH-048334	RFR CAP APPROP FROM CA-RCSF	WA HEALTH	0	0	0
DOH-048335	RFR RECUR TFR FROM UNALLO-RCSF	WA HEALTH	0	0	0
DOH-048336	RFR CAP TFR FROM UNALLOC-RCSF	WA HEALTH	0	0	0
DOH-048337	RFR RECUR TFR TO UNALLOC-RCSF	WA HEALTH	0	0	0
DOH-048338	RFR CAP TFR TO UNALLOC-RCSF	WA HEALTH	0	0	0
Total			42,133	-42,133	0
DOT-048330	RFR APPROPRIATION FROM CA-RCSF	TRANSPORT	0	0	0
DOT-048331	RFR RECURRENT PAYMENT-RCSF	TRANSPORT	0	0	0
DOT-048332	RFR CAPITAL PAYMENT-RCSF	TRANSPORT	0	0	0
DOT-048333	RFR RECUR APPROP FROM CA-RCSF	TRANSPORT	0	0	0
DOT-048334	RFR CAP APPROP FROM CA-RCSF	TRANSPORT	0	0	0
DOT-048335	RFR RECUR TFR FROM UNALLO-RCSF	TRANSPORT	0	0	0
DOT-048336	RFR CAP TFR FROM UNALLOC-RCSF	TRANSPORT	0	0	0
DOT-048337	RFR RECUR TFR TO UNALLOC-RCSF	TRANSPORT	0	0	0
DOT-048338	RFR CAP TFR TO UNALLOC-RCSF	TRANSPORT	0	0	0
Total			0	0	0
HOR-048330	RFR APPROP CA-RCSF		0	0	0
HOR-	RFR RECURRENT PAYMENT-RCSF		0	0	0

048331					
HOR-048332	RFR CAPITAL PAYMENT-RCSF		0	0	0
HOR-048333	RFR RECUR APPROP FROM CA-RCSF		0	0	0
HOR-048334	RFR CAP APPROP FROM CA-RCSF		0	0	0
HOR-048335	RFR RECUR TFR FROM UNALLO-RCSF		0	0	0
HOR-048336	RFR CAP TFR FROM UNALLOC-RCSF		0	0	0
HOR-048337	RFR RECUR TFR TO UNALLOC-RCSF		0	0	0
HOR-048338	RFR CAP TFR TO UNALLOC-RCSF		0	0	0
			Total		
			0	0	0
DOW-048330	RFR APPROP CA-RCSF	WATER	0	0	0
DOW-048331	RFR RECURRENT PAYMENT-RCSF	WATER	0	0	0
DOW-048332	RFR CAPITAL PAYMENT-RCSF	WATER	0	0	0
DOW-048333	RFR RECUR APPROP FROM CA-RCSF	WATER	0	0	0
DOW-048334	RFR CAP APPROP FROM CA-RCSF	WATER	0	0	0
DOW-048335	RFR RECUR TFR FROM UNALLO-RCSF	WATER	0	0	0
DOW-048336	RFR CAP TFR FROM UNALLOC-RCSF	WATER	0	0	0
DOW-048337	RFR RECUR TFR TO UNALLOC-RCSF	WATER	0	0	0
DOW-048338	RFR CAP TFR TO UNALLOC-RCSF	WATER	0	0	0
			Total		
			0	0	0
KDC-048330	RFR APPROPRIATION FROM CA-RCSF	KIMBERLEY DEVELOP COMMISS	0	0	0
KDC-048331	RFR RECURRENT PAYMENT-RCSF	KIMBERLEY DEVELOP COMMISS	0	0	0
KDC-048332	RFR CAPITAL PAYMENT-RCSF	KIMBERLEY DEVELOP COMMISS	0	0	0
KDC-048333	RFR RECUR APPROP FROM CA-RCSF	KIMBERLEY DEVELOP COMMISS	0	0	0
KDC-048334	RFR CAP APPROP FROM CA-RCSF	KIMBERLEY DEVELOP COMMISS	0	0	0
KDC-048335	RFR RECUR TFR FROM UNALLO-RCSF	KIMBERLEY DEVELOP COMMISS	0	0	0

KDC-048336	RFR CAP TFR FROM UNALLOC-RCSF	KIMBERLEY DEVELOP COMMISS	0	0	0
KDC-048337	RFR RECUR TFR TO UNALLOC-RCSF	KIMBERLEY DEVELOP COMMISS	0	0	0
KDC-048338	RFR CAP TFR TO UNALLOC-RCSF	KIMBERLEY DEVELOP COMMISS	0	0	0
Total			0	0	0
LDA-048330	RFR APPROPRIATION FROM CA-RCSF		0	0	0
LDA-048331	RFR RECURRENT PAYMENT-RCSF		0	0	0
LDA-048332	RFR CAPITAL PAYMENT-RCSF		0	0	0
LDA-048333	RFR RECUR APPROP FROM CA-RCSF		0	0	0
LDA-048334	RFR CAP APPROP FROM CA-RCSF		0	0	0
LDA-048335	RFR RECUR TFR FROM UNALLO-RCSF		0	0	0
LDA-048336	RFR CAP TFR FROM UNALLOC-RCSF		0	0	0
LDA-048337	RFR RECUR TFR TO UNALLOC-RCSF		0	0	0
LDA-048338	RFR CAP TFR TO UNALLOC-RCSF		0	0	0
Total			0	0	0
LGA-048330	RFR APPROPRIATION FROM CA-RCSF	LOCAL GOVERNMENT	14,214	-14,214	0
LGA-048331	RFR RECURRENT PAYMENT-RCSF	LOCAL GOVERNMENT	8,786	0	8,786
LGA-048332	RFR CAPITAL PAYMENT-RCSF	LOCAL GOVERNMENT	0	0	0
LGA-048333	RFR RECUR APPROP FROM CA-RCSF	LOCAL GOVERNMENT	0	-8,786	-8,786
LGA-048334	RFR CAP APPROP FROM CA-RCSF	LOCAL GOVERNMENT	0	0	0
LGA-048335	RFR RECUR TFR FROM UNALLO-RCSF	LOCAL GOVERNMENT	0	0	0
LGA-048336	RFR CAP TFR FROM UNALLOC-RCSF	LOCAL GOVERNMENT	0	0	0
LGA-048337	RFR RECUR TFR TO UNALLOC-RCSF	LOCAL GOVERNMENT	0	0	0
LGA-048338	RFR CAP TFR TO UNALLOC-RCSF	LOCAL GOVERNMENT	0	0	0
Total			23,000	-23,000	0
DIR-048330	RFR APPROPRIATION FROM CA-RCSF	MINES AND PETROLEUM	0	0	0
DIR-048331	RFR RECURRENT PAYMENT-RCSF	MINES AND PETROLEUM	0	0	0
DIR-048332	RFR CAPITAL PAYMENT-RCSF	MINES AND PETROLEUM	0	0	0
DIR-048333	RFR RECUR APPROP FROM CA-RCSF	MINES AND PETROLEUM	0	0	0
DIR-048334	RFR CAP APPROP FROM CA-RCSF	MINES AND PETROLEUM	0	0	0
DIR-048335	RFR RECUR TFR FROM UNALLO-RCSF	MINES AND PETROLEUM	0	0	0
DIR-048336	RFR CAP TFR FROM UNALLOC-RCSF	MINES AND PETROLEUM	0	0	0
DIR-048337	RFR RECUR TFR TO UNALLOC-RCSF	MINES AND PETROLEUM	0	0	0
DIR-048338	RFR CAP TFR TO UNALLOC-RCSF	MINES AND PETROLEUM	0	0	0
Total			0	0	0
PDC-048330	RFR APPROPRIATION FROM CA-RCSF		0	0	0
PDC-	RFR RECURRENT PAYMENT-RCSF		0	0	0

048331					
PDC-					
048332	RFR CAPITAL PAYMENT-RCSF		0	0	0
PDC-					
048333	RFR RECUR APPROP FROM CA-RCSF		0	0	0
PDC-					
048334	RFR CAP APPROP FROM CA-RCSF		0	0	0
PDC-					
048335	RFR RECUR TFR FROM UNALLO-RCSF		0	0	0
PDC-					
048336	RFR CAP TFR FROM UNALLOC-RCSF		0	0	0
PDC-					
048337	RFR RECUR TFR TO UNALLOC-RCSF		0	0	0
PDC-					
048338	RFR CAP TFR TO UNALLOC-RCSF		0	0	0
			Total	0	0
				0	0
PEL-048330	RFR APPROPRIATION FROM CA-RCSF	PEEL DEVELOPMENT COMMISSION	0	0	0
PEL-048331	RFR RECURRENT PAYMENT-RCSF	PEEL DEVELOPMENT COMMISSION	0	0	0
PEL-048332	RFR CAPITAL PAYMENT-RCSF	PEEL DEVELOPMENT COMMISSION	0	0	0
PEL-048333	RFR RECUR APPROP FROM CA-RCSF	PEEL DEVELOPMENT COMMISSION	0	0	0
PEL-048334	RFR CAP APPROP FROM CA-RCSF	PEEL DEVELOPMENT COMMISSION	0	0	0
PEL-048335	RFR RECUR TFR FROM UNALLO-RCSF	PEEL DEVELOPMENT COMMISSION	0	0	0
PEL-048336	RFR CAP TFR FROM UNALLOC-RCSF	PEEL DEVELOPMENT COMMISSION	0	0	0
PEL-048337	RFR RECUR TFR TO UNALLOC-RCSF	PEEL DEVELOPMENT COMMISSION	0	0	0
PEL-048338	RFR CAP TFR TO UNALLOC-RCSF	PEEL DEVELOPMENT COMMISSION	0	0	0
			Total	0	0
				0	0
DPI-048330	RFR APPROPRIATION FROM CA-RCSF	PLANNING	0	0	0
DPI-048331	RFR RECURRENT PAYMENT-RCSF	PLANNING	0	0	0
DPI-048332	RFR CAPITAL PAYMENT-RCSF	PLANNING	0	0	0
DPI-048333	RFR RECUR APPROP FROM CA-RCSF	PLANNING	0	0	0
DPI-048334	RFR CAP APPROP FROM CA-RCSF	PLANNING	0	0	0
DPI-048335	RFR RECUR TFR FROM UNALLO-RCSF	PLANNING	0	0	0
DPI-048336	RFR CAP TFR FROM UNALLOC-RCSF	PLANNING	0	0	0
DPI-048337	RFR RECUR TFR TO UNALLOC-RCSF	PLANNING	0	0	0
DPI-048338	RFR CAP TFR TO UNALLOC-RCSF	PLANNING	0	0	0
			Total	0	0
				0	0
RDL-048330	RFR APPROPRIATION FROM CA-RCSF	REGIONAL DEVELOPMENT AND LANDS	0	0	0
RDL-048331	RFR RECURRENT PAYMENT-RCSF	REGIONAL DEVELOPMENT AND LANDS	18,130	0	18,130
RDL-048332	RFR CAPITAL PAYMENT-RCSF	REGIONAL DEVELOPMENT AND LANDS	0	0	0
RDL-048333	RFR RECUR APPROP FROM CA-RCSF	REGIONAL DEVELOPMENT AND LANDS	0	-20,844	-20,844
RDL-048334	RFR CAP APPROP FROM CA-RCSF	REGIONAL DEVELOPMENT AND LANDS	0	0	0
RDL-048335	RFR RECUR TFR FROM UNALLO-RCSF	REGIONAL DEVELOPMENT AND LANDS	0	0	0

RDL-048336	RFR CAP TFR FROM UNALLOC-RCSF	REGIONAL DEVELOPMENT AND LANDS	0	0	0
RDL-048337	RFR RECUR TFR TO UNALLOC-RCSF	REGIONAL DEVELOPMENT AND LANDS	0	0	0
RDL-048338	RFR CAP TFR TO UNALLOC-RCSF	REGIONAL DEVELOPMENT AND LANDS	0	0	0
Total			18,130	-20,844	-2,714
HOU-048330	RFR APPROPRIATION FROM CA-RCSF	HOUSING AUTHORITY	0	0	0
HOU-048331	RFR RECURRENT PAYMENT-RCSF	HOUSING AUTHORITY	0	0	0
HOU-048332	RFR CAPITAL PAYMENT-RCSF	HOUSING AUTHORITY	0	0	0
HOU-048333	RFR RECUR APPROP FROM CA-RCSF	HOUSING AUTHORITY	0	0	0
HOU-048334	RFR CAP APPROP FROM CA-RCSF	HOUSING AUTHORITY	0	0	0
HOU-048335	RFR RECUR TFR FROM UNALLO-RCSF	HOUSING AUTHORITY	0	0	0
HOU-048336	RFR CAP TFR FROM UNALLOC-RCSF	HOUSING AUTHORITY	0	0	0
HOU-048337	RFR RECUR TFR TO UNALLOC-RCSF	HOUSING AUTHORITY	0	0	0
HOU-048338	RFR CAP TFR TO UNALLOC-RCSF	HOUSING AUTHORITY	0	0	0
Total			0	0	0
SDA-048330	RFR APPROPRIATION FROM CA-RCSF	SOUTH WEST DEVELOPMENT COMMISS	0	0	0
SDA-048331	RFR RECURRENT PAYMENT-RCSF	SOUTH WEST DEVELOPMENT COMMISS	0	0	0
SDA-048332	RFR CAPITAL PAYMENT-RCSF	SOUTH WEST DEVELOPMENT COMMISS	0	0	0
SDA-048333	RFR RECUR APPROP FROM CA-RCSF	SOUTH WEST DEVELOPMENT COMMISS	0	0	0
SDA-048334	RFR CAP APPROP FROM CA-RCSF	SOUTH WEST DEVELOPMENT COMMISS	0	0	0
SDA-048335	RFR RECUR TFR FROM UNALLO-RCSF	SOUTH WEST DEVELOPMENT COMMISS	0	0	0
SDA-048336	RFR CAP TFR FROM UNALLOC-RCSF	SOUTH WEST DEVELOPMENT COMMISS	0	0	0
SDA-048337	RFR RECUR TFR TO UNALLOC-RCSF	SOUTH WEST DEVELOPMENT COMMISS	0	0	0
SDA-048338	RFR CAP TFR TO UNALLOC-RCSF	SOUTH WEST DEVELOPMENT COMMISS	0	0	0
Total			0	0	0
WDC-048330	RFR APPROPRIATION FROM CA-RCSF	WHEATBELT DEVELOP COMMISSION	0	0	0
WDC-048331	RFR RECURRENT PAYMENT-RCSF	WHEATBELT DEVELOP COMMISSION	0	0	0

WDC-048332	RFR CAPITAL PAYMENT-RCSF	WHEATBELT DEVELOP COMMISSION	0	0	0
WDC-048333	RFR RECUR APPROP FROM CA-RCSF	WHEATBELT DEVELOP COMMISSION	0	0	0
WDC-048334	RFR CAP APPROP FROM CA-RCSF	WHEATBELT DEVELOP COMMISSION	0	0	0
WDC-048335	RFR RECUR TFR FROM UNALLO-RCSF	WHEATBELT DEVELOP COMMISSION	0	0	0
WDC-048336	RFR CAP TFR FROM UNALLOC-RCSF	WHEATBELT DEVELOP COMMISSION	0	0	0
WDC-048337	RFR RECUR TFR TO UNALLOC-RCSF	WHEATBELT DEVELOP COMMISSION	0	0	0
WDC-048338	RFR CAP TFR TO UNALLOC-RCSF	WHEATBELT DEVELOP COMMISSION	0	0	0
Total			0	0	0
Regional Community Services Fund Total			85,258	-88,167	-2,909
TIMS No. 111 200 032 TSYA-CPID					

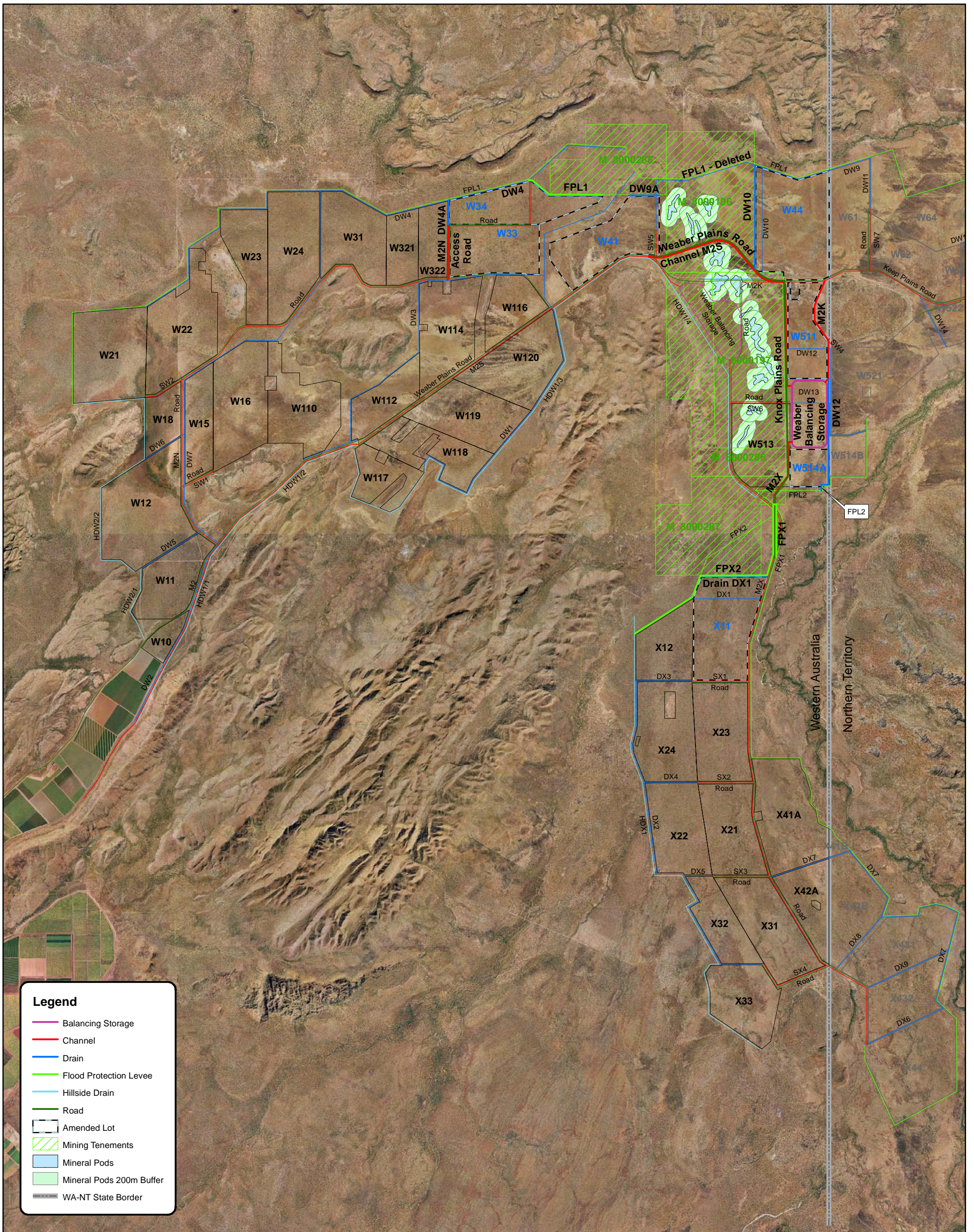
TOU-048333	RFR RECUR APPROP FROM CA-RCSF	Water Corporation	0	-55	-55
<i>(This entry on included in report)</i>					
Regional Community Services Fund Total					
TIMS No. 111 200 032 TSYA-CPID (Amended Total)			85,258	-88,222	-2,964

Unallocated

LGA-048339	RFR APPROP CA-UNALL RECURRENT	LOCAL GOVERNMENT	0	-1,200	-1,200
LGA-048340	RFR APPROP CA-UNALLOC CAPITAL	LOCAL GOVERNMENT	0	0	0
LGA-048341	RFR RECURRENT PAYMENT-UNALLOCA	LOCAL GOVERNMENT	1,200	0	1,200
LGA-048342	RFR CAPITAL PAYMENT-UNALLOCATE	LOCAL GOVERNMENT	0	0	0
LGA-048345	RFR RECUR TFR TO RIHF-UNALLOC	LOCAL GOVERNMENT	0	0	0
LGA-048346	RFR RECUR TFR TO CLGF-UNALLOC	LOCAL GOVERNMENT	0	0	0
LGA-048347	RFR RECUR TFR TO RCSF-UNALLOC	LOCAL GOVERNMENT	0	0	0
LGA-048348	RFR CAP TFR TO RIHF-UNALLOC	LOCAL GOVERNMENT	0	0	0
LGA-048349	RFR CAP TFR TO CLGF-UNALLOC	LOCAL GOVERNMENT	0	0	0
LGA-048350	RFR CAP TFR TO RCSF-UNALLOC	LOCAL GOVERNMENT	0	0	0
LGA-048351	RFR RECUR TFR FROM RIHF-UNALLO	LOCAL GOVERNMENT	0	0	0
LGA-048352	RFR RECUR TFR FROM CLGF-UNALLO	LOCAL GOVERNMENT	0	0	0
LGA-048353	RFR RECUR TFR FROM RCSF-UNALLO	LOCAL GOVERNMENT	0	0	0
LGA-048354	RFR CAP TFR FROM RIHF-UNALLOC	LOCAL GOVERNMENT	0	0	0
LGA-048355	RFR CAP TFR FROM CLGF-UNALLOC	LOCAL GOVERNMENT	0	0	0
LGA-048356	RFR CAP TFR FROM RCSF-UNALLOC	LOCAL GOVERNMENT	0	0	0
RDL-048339	RFR APPROP CA-UNALL RECURRENT	REGIONAL DEVELOPMENT AND LANDS	0	-4,791	-4,791
RDL-048340	RFR APPROP CA-UNALLOC CAPITAL	REGIONAL DEVELOPMENT AND LANDS	0	0	0
RDL-048341	RFR RECURRENT PAYMENT-UNALLOCA	REGIONAL DEVELOPMENT AND LANDS	4,791	0	4,791
RDL-048342	RFR CAPITAL PAYMENT-UNALLOCATE	REGIONAL DEVELOPMENT AND LANDS	0	0	0
RDL-048345	RFR RECUR TFR TO RIHF-UNALLOC	REGIONAL DEVELOPMENT AND LANDS	0	0	0

RDL-048346	RFR RECUR TFR TO CLGF-UNALLOC	REGIONAL DEVELOPMENT AND LANDS	0	0	0
RDL-048347	RFR RECUR TFR TO RCSF-UNALLOC	REGIONAL DEVELOPMENT AND LANDS	0	0	0
RDL-048348	RFR CAP TFR TO RIHF-UNALLOC	REGIONAL DEVELOPMENT AND LANDS	0	0	0
RDL-048349	RFR CAP TFR TO CLGF-UNALLOC	REGIONAL DEVELOPMENT AND LANDS	0	0	0
RDL-048350	RFR CAP TFR TO RCSF-UNALLOC	REGIONAL DEVELOPMENT AND LANDS	0	0	0
RDL-048351	RFR RECUR TFR FROM RIHF-UNALLO	REGIONAL DEVELOPMENT AND LANDS	0	0	0
RDL-048352	RFR RECUR TFR FROM CLGF-UNALLO	REGIONAL DEVELOPMENT AND LANDS	0	0	0
RDL-048353	RFR RECUR TFR FROM RCSF-UNALLO	REGIONAL DEVELOPMENT AND LANDS	0	0	0
RDL-048354	RFR CAP TFR FROM RIHF-UNALLOC	REGIONAL DEVELOPMENT AND LANDS	0	0	0
RDL-048355	RFR CAP TFR FROM CLGF-UNALLOC	REGIONAL DEVELOPMENT AND LANDS	0	0	0
RDL-048356	RFR CAP TFR FROM RCSF-UNALLOC	REGIONAL DEVELOPMENT AND LANDS	0	0	0
TSE-048339	RFR APPROP CA-UNALL RECURRENT	TREASURY AND FINANCE <TSE>	204,513	-419,718	-215,205
TSE-048340	RFR APPROP CA-UNALLOC CAPITAL	TREASURY AND FINANCE <TSE>	21,050	-42,100	-21,050
TSE-048345	RFR RECUR TFR TO RIHF-UNALLOC	TREASURY AND FINANCE <TSE>	0	0	0
TSE-048346	RFR RECUR TFR TO CLGF-UNALLOC	TREASURY AND FINANCE <TSE>	0	0	0
TSE-048347	RFR RECUR TFR TO RCSF-UNALLOC	TREASURY AND FINANCE <TSE>	0	0	0
TSE-048348	RFR CAP TFR TO RIHF-UNALLOC	TREASURY AND FINANCE <TSE>	0	0	0
TSE-048349	RFR CAP TFR TO CLGF-UNALLOC	TREASURY AND FINANCE <TSE>	0	0	0
TSE-048350	RFR CAP TFR TO RCSF-UNALLOC	TREASURY AND FINANCE <TSE>	0	0	0
TSE-048351	RFR RECUR TFR FROM RIHF-UNALLO	TREASURY AND FINANCE <TSE>	0	0	0
TSE-048352	RFR RECUR TFR FROM CLGF-UNALLO	TREASURY AND FINANCE <TSE>	0	0	0
TSE-048353	RFR RECUR TFR FROM RCSF-UNALLO	TREASURY AND FINANCE <TSE>	0	0	0
TSE-048354	RFR CAP TFR FROM RIHF-UNALLOC	TREASURY AND FINANCE <TSE>	0	0	0
TSE-048355	RFR CAP TFR FROM CLGF-UNALLOC	TREASURY AND FINANCE <TSE>	0	0	0
TSE-048356	RFR CAP TFR FROM RCSF-UNALLOC	TREASURY AND FINANCE <TSE>	0	0	0
Total			231,554	-467,809	-236,255
Unallocated Total			231,554	-467,809	-236,255
Grand Total			1,596,687	-2,010,572	-413,885
Amended Grand Total			1,596,687	-2,012,627	-415,940

TIMS No. 111 200 032 TSYA-CPID



Legend

- Balancing Storage
- Channel
- Drain
- Flood Protection Levee
- Hillside Drain
- Road
- Amended Lot
- Mining Tenements
- Mineral Pods
- Mineral Pods 200m Buffer
- WA-NT State Border

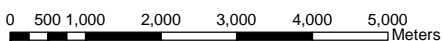
ORD RIVER IRRIGATION AREA - STAGE 2
WESTERN AUSTRALIA
SCENARIO 2

AVOIDING MINING TENEMENT BOUNDARIES



Engineering Services
 www.sunwater.com.au
 © Copyright. SunWater 2007

SCALE 1:100000 (Original Size - A3)



Prepared	JMD	Checked	GRM	Approved	GRM
Revision	Date	Remarks			
Drawing Number	A3-228905				

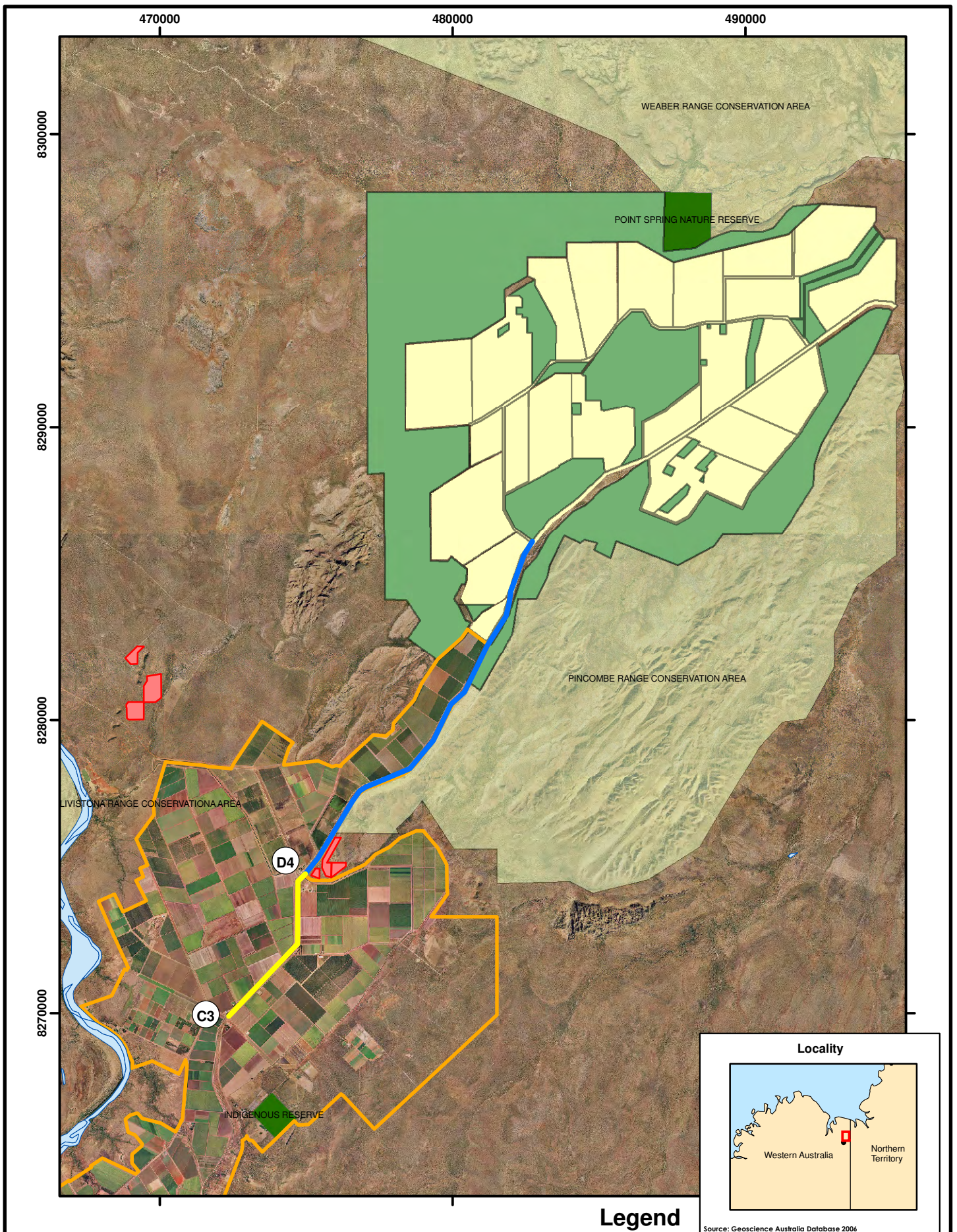
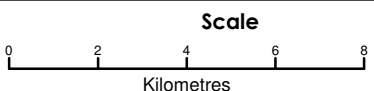


Figure 1 Phase 1 project area

Legend

- Potential material extraction areas
- Phase 1A project area
- Phase 1B project area
- Existing irrigation area
- Weaber Plain buffer area
- Weaber Plain development area
- Existing reserves
- LIVISTONA RANGE CONSERVATION AREA
- PINCOMBE RANGE CONSERVATION AREA
- WEABER RANGE CONSERVATION AREA

Source: Geoscience Australia Database 2006



1:170,000 at A4
 Coordinate System: GDA 1994 MGA Zone 52
 Date: 16/09/2009
 Prepared by: BSmith

Ph 9 228 8900 Fax 9227 8344
 PO Box 382 Leederville WA 6003
 Suite 7, 643 Newcastle St Leederville WA 6007
 Email: info@strategen.com.au Web: www.strategen.com.au