



ESTIMATES AND FINANCIAL OPERATIONS COMMITTEE

Department of Education

Hon Alison Xamon MLC asked:

1. I refer to Page 170 of the Budget under New Primary Schools, Line Item "Doubleview Primary School - rebuild" - I note that the total amount in the budget is \$800,000 more than that stated as part of the Joint Development Application Panel application for this build:

Could the Minister please explain why this variation exists?

Answer

In general, costs identified in development applications represent construction costs only and do not include planning and development costs such as professional, design and management fees.

In particular, the Honourable Member appears to be confusing the Doubleview Primary School rebuild budget with the development application of a second proposed project on the same site.

- The construction cost reflected in the development application for the proposed rebuild (at \$15.4 million) of Doubleview Primary School is \$13.978 million.
- The proposed redevelopment of the existing school for the International School of Western Australia has an allocated budget of \$18.6 million; the estimated construction cost as shown in the development application is \$14.6 million.

ESTIMATES AND FINANCIAL OPERATIONS COMMITTEE

Department of Education

Hon Alison Xamon MLC asked:

2. I refer to page 160, Significant Issues Impacting the Agency, Third dot point:
- (a) Would the Minister please elaborate on what a full service school entails;
 - (b) Where will the pilot be established;
 - (c) When will the pilot be established; and
 - (d) Are other departments contributing towards this pilot:
 - (i) If yes, which departments; and
 - (ii) If yes, how much are they contributing?

Answer

- (a) The purpose of a full service school is to improve educational and social outcomes for young people by providing them with better access to more coordinated delivery of the services and support they need to achieve and succeed. A full service school becomes the central point for young people to access human services, rather than having to access multiple locations for the range of services that they require. It provides the potential to extend existing partnerships and services, develop new partnerships and increase community access to school facilities and programs.
- (b) The site will be announced soon.
- (c) Planning is underway and the pilot will commence in Semester 1, 2018. It is a staged process, with full implementation of the pilot expected in 2019.
- (d) Yes.
 - (i) Department of Communities;
Department of Health;
Western Australia Police; and
Department of Justice.
 - (ii) No direct funding is expected from participating departments. These departments will provide in-kind support in the form of services offered as part of the pilot.



ESTIMATES AND FINANCIAL OPERATIONS COMMITTEE

Department of Education

Hon Alison Xamon MLC asked:

3. I refer to page 160, Significant Issues Impacting the Agency, third dot point:
- (a) Is there any new funding in the 2017-18 budget for specialist support for students with challenging behaviours; and
 - (b) If yes, please advise which new programs or services will be funded?
-

Answer

- 3.
- (a) There is no new funding in the 2017-18 budget specifically for specialist support for students with challenging behaviours. There is, however, a total of \$13 226 000 being spent over four years to deliver the State Government's mental health programs in schools election commitment. The programs provided through this funding will build resilience, assist with emotional regulation, and help establish positive and respectful relationships, all of which moderate against instances of extreme and/or challenging student behaviour in schools.
 - (b) Not applicable



ESTIMATES AND FINANCIAL OPERATIONS COMMITTEE

Department of Education

Hon Alison Xamon MLC asked:

4. I refer to page 160, Significant Issues Impacting the Agency, fourth dot point:
- (a) Could the Minister please provide some information about any current or anticipated research partnerships, including:
 - (i) the research topic;
 - (ii) the research timeframe; and
 - (iii) who is undertaking the research?

Answer

- (i) The research will identify examples of schools effectively implementing one or more of the five standards of the Department's *Aboriginal Cultural Standards Framework* (Relationships, Leadership, Teaching, Learning Environment and Resources). The intent is that these best-practice examples will be shared and scaled across the system so that public schools become more culturally responsive and can better address the needs of Aboriginal students, families and their communities.
- (ii) The research will commence during the 2018 school year. The final timeframe will not be known until the research contract has been finalised.
- (iii) A tender process will determine who undertakes the research. Contract/s will be awarded in accordance with State Supply Commission Policy requirements.



ESTIMATES AND FINANCIAL OPERATIONS COMMITTEE

Department of Education

Hon Martin Aldridge MLC asked:

1. I refer to page 25 and 26 of the hearing transcript and in relation to the School Chaplaincy Program I ask:
 - (a) What amount of funding will be provided in 2017-18 and across the forward estimates by the State and Federal Government respectively;
 - (b) Which schools have funding allocated to them to engage a Chaplain and advise the FTE allocation for each school;
 - (c) Of those identified in (b) which schools currently are not utilising their funding for this purpose;
 - (d) Of those identified in (c) which schools are not utilising their funding resulting from an inability to attract a Chaplain to the school; and
 - (e) With respect to the religious affiliation requirements of chaplaincy funding, is this a State or Federal requirement?

Answer:

- (a) The State Government will provide a total of \$10 482 771 for the In School Chaplaincy Program for the 2017-18 funding round. This comprises an amount of \$5 177 071 for 2017 and \$5 305 700 for 2018. Funding for both years includes indexation.

The State Government has allocated \$5 438 298 for 2019 and \$5 469 300 in 2020 for the In School State Funded Chaplaincy Program in the forward estimates.

The Federal Government has not yet advised if funding will be allocated for the National School Chaplaincy Programme post-2018.

- (b) Schools are allocated funding, not FTE, for chaplains. Attachment 1 details the funding allocated to each school.

Schools listed in the National School Chaplaincy Programme receive \$20 000 (or \$24 000 if considered remote) from Commonwealth funding. The balance of the amount listed in Attachment 1 is funded by the State Government. This is because funds received by schools in the State-funded program are indexed. National School Chaplaincy Programme funding is not indexed. The State funds the difference to provide equity across all public schools funded for a chaplain.

- (c) All schools are required to utilise chaplaincy funding for chaplaincy services. No public school uses this funding for any other purpose. Some schools do not utilise their funding because they cannot secure the services of a chaplain (see response to (d)).

- (d) Attachment 2 lists the schools that are not utilising their chaplaincy funding due to inability to secure a chaplain.
- (e) The Commonwealth-funded National School Chaplaincy Programme requires religious affiliation. The State-funded program was created as an extension of this program and currently includes the same stipulation.

A handwritten signature in blue ink, appearing to read "Sam Kelly".

ATTACHMENT 1

**WESTERN AUSTRALIA PUBLIC SCHOOLS RECEIVING CHAPLAINCY FUNDING FOR
2017 UNDER THE NATIONAL SCHOOL CHAPLAINCY PROGRAM (NSCP) AND THE
IN SCHOOL STATE FUNDED CHAPLAINCY PROGRAM (ISSFCP)**

	School Name	Program	2017 Funding (\$)	2018 Funding (\$)
1	ALBANY SECONDARY EDUCATION SUPPORT CENTRE	NSCP	20 500	21 012.50
2	ALBANY SENIOR HIGH SCHOOL	NSCP	20 500	21 012.50
3	ALLENDALE PRIMARY SCHOOL	NSCP	20 500	21 012.50
4	AMAROO PRIMARY SCHOOL	NSCP	20 500	21 012.50
5	ARMADALE EDUCATION SUPPORT CENTRE	NSCP	20 500	21 012.50
6	ARMADALE SENIOR HIGH SCHOOL	NSCP	20 500	21 012.50
7	ASHBURTON DRIVE PRIMARY SCHOOL	NSCP	20 500	21 012.50
8	ASHFIELD PRIMARY SCHOOL	NSCP	20 500	21 012.50
9	AUGUSTA PRIMARY SCHOOL	NSCP	20 500	21 012.50
10	AUSTRALIND PRIMARY SCHOOL	NSCP	20 500	21 012.50
11	AVONVALE PRIMARY SCHOOL	NSCP	20 500	21 012.50
12	BALCATT A PRIMARY SCHOOL	NSCP	20 500	21 012.50
13	BALGA PRIMARY SCHOOL	NSCP	20 500	21 012.50
14	BALGA SENIOR HIGH SCHOOL	NSCP	20 500	21 012.50
15	BEACHLANDS PRIMARY SCHOOL	NSCP	20 500	21 012.50
16	BEELIAR PRIMARY SCHOOL	NSCP	20 500	21 012.50
17	BELDON EDUCATION SUPPORT CENTRE	NSCP	20 500	21 012.50
18	BELDON PRIMARY SCHOOL	NSCP	20 500	21 012.50
19	BELMAY PRIMARY SCHOOL	NSCP	20 500	21 012.50
20	BELMONT CITY COLLEGE	NSCP	20 500	21 012.50
21	BELMONT PRIMARY SCHOOL	NSCP	20 500	21 012.50
22	BENTLEY PRIMARY SCHOOL	NSCP	20 500	21 012.50
23	BERTRAM PRIMARY SCHOOL	NSCP	20 500	21 012.50
24	BEVERLEY DISTRICT HIGH SCHOOL	NSCP	20 500	21 012.50
25	BLUFF POINT PRIMARY SCHOOL	NSCP	20 500	21 012.50
26	BODDINGTON DISTRICT HIGH SCHOOL	NSCP	20 500	21 012.50
27	BOULDER PRIMARY SCHOOL	NSCP	20 500	21 012.50
28	BOYARE PRIMARY SCHOOL	NSCP	20 500	21 012.50
29	BRAESIDE PRIMARY SCHOOL	NSCP	20 500	21 012.50
30	BRAMFIELD PARK PRIMARY SCHOOL	NSCP	20 500	21 012.50
31	BREMER BAY PRIMARY SCHOOL	NSCP	24 600	25 215.00
32	BRIDGETOWN PRIMARY SCHOOL	NSCP	20 500	21 012.50
33	BROOKMAN PRIMARY SCHOOL	NSCP	20 500	21 012.50
34	BROOKTON DISTRICT HIGH SCHOOL	NSCP	20 500	21 012.50
35	BROOME PRIMARY SCHOOL	NSCP	24 600	25 215.00
36	BROOME SENIOR HIGH SCHOOL	NSCP	24 600	25 215.00
37	BRUNSWICK JUNCTION PRIMARY SCHOOL	NSCP	20 500	21 012.50
38	BUNGAREE PRIMARY SCHOOL	NSCP	20 500	21 012.50
39	BURBRIDGE SCHOOL	NSCP	20 500	21 012.50

	School Name	Program	2017 Funding (\$)	2018 Funding (\$)
40	BUSSELTON PRIMARY SCHOOL	NSCP	20 500	21 012.50
41	BUSSELTON SENIOR HIGH SCHOOL	NSCP	20 500	21 012.50
42	BYFORD PRIMARY SCHOOL	NSCP	20 500	21 012.50
43	CABLE BEACH PRIMARY SCHOOL	NSCP	24 600	25 215.00
44	CAPEL PRIMARY SCHOOL	NSCP	20 500	21 012.50
45	CARALEE COMMUNITY SCHOOL	NSCP	20 500	21 012.50
46	CARCOOLA PRIMARY SCHOOL	NSCP	20 500	21 012.50
47	CAREY PARK PRIMARY SCHOOL	NSCP	20 500	21 012.50
48	CARNARVON COMMUNITY COLLEGE	NSCP	24 600	25 215.00
49	CECIL ANDREWS SENIOR HIGH SCHOOL	NSCP	20 500	21 012.50
50	CENTRAL MIDLANDS SENIOR HIGH SCHOOL	NSCP	20 500	21 012.50
51	CERVANTES PRIMARY SCHOOL	NSCP	20 500	21 012.50
52	CHALLIS COMMUNITY PRIMARY SCHOOL	NSCP	20 500	21 012.50
53	CLARKSON COMMUNITY HIGH SCHOOL	NSCP	20 500	21 012.50
54	CLARKSON PRIMARY SCHOOL	NSCP	20 500	21 012.50
55	CLAYTON VIEW PRIMARY SCHOOL	NSCP	20 500	21 012.50
56	CLIFTON PARK PRIMARY SCHOOL	NSCP	20 500	21 012.50
57	CLOVERDALE PRIMARY SCHOOL	NSCP	20 500	21 012.50
58	COLLEGE ROW SCHOOL	NSCP	20 500	21 012.50
59	COLLIE SENIOR HIGH SCHOOL	NSCP	20 500	21 012.50
60	COODANUP COLLEGE	NSCP	20 500	21 012.50
61	COOINDA PRIMARY SCHOOL	NSCP	20 500	21 012.50
62	COOLBELLUP COMMUNITY SCHOOL	NSCP	20 500	21 012.50
63	COOLOONGUP PRIMARY SCHOOL	NSCP	20 500	21 012.50
64	COOROW PRIMARY SCHOOL	NSCP	24 600	25 215.00
65	CUE PRIMARY SCHOOL	NSCP	24 600	25 215.00
66	CUNDERDIN DISTRICT HIGH SCHOOL	NSCP	20 500	21 012.50
67	CURTIN PRIMARY SCHOOL	NSCP	20 500	21 012.50
68	DALYELLUP COLLEGE	NSCP	20 500	21 012.50
69	DARKAN PRIMARY SCHOOL	NSCP	20 500	21 012.50
70	DAWSON PARK PRIMARY SCHOOL	NSCP	20 500	21 012.50
71	DERBY DISTRICT HIGH SCHOOL	NSCP	24 000	25 215.00
72	DONGARA DISTRICT HIGH SCHOOL	NSCP	20 600	21 012.50
73	DONNYBROOK DISTRICT HIGH SCHOOL	NSCP	20 500	21 012.50
74	DOWERIN DISTRICT HIGH SCHOOL	NSCP	20 500	21 012.50
75	DRYANDRA PRIMARY SCHOOL	NSCP	20 500	21 012.50
76	DUDLEY PARK PRIMARY SCHOOL	NSCP	20 500	21 012.50
77	DUMBLEYUNG PRIMARY SCHOOL	NSCP	24 600	25 215.00
78	DWELLINGUP PRIMARY SCHOOL	NSCP	20 500	21 012.50
79	EAST BEECHBORO PRIMARY SCHOOL	NSCP	20 500	21 012.50

NSCP – National School Chaplaincy Program

ISSFCP – In School State Funded Chaplaincy Program

Orelia Primary School jointly funded by both NSCP and ISSFCP

	School Name	Program	2017 Funding (\$)	2018 Funding (\$)
80	EAST BUTLER PRIMARY SCHOOL	NSCP	20 500	21 012.50
81	EAST HAMILTON HILL PRIMARY SCHOOL	NSCP	20 500	21 012.50
82	EAST KALGOORLIE PRIMARY SCHOOL	NSCP	20 500	21 012.50
83	EAST MADDINGTON PRIMARY SCHOOL	NSCP	20 500	21 012.50
84	EAST MANJIMUP PRIMARY SCHOOL	NSCP	20 500	21 012.50
85	EAST NARROGIN PRIMARY SCHOOL	NSCP	20 500	21 012.50
86	EAST WAIKIKI PRIMARY SCHOOL	NSCP	20 500	21 012.50
87	EAST WANNEROO PRIMARY SCHOOL	NSCP	20 500	21 012.50
88	EASTERN GOLDFIELDS EDUCATION SUPPORT CENTRE	NSCP	20 500	21 012.50
89	EATON COMMUNITY COLLEGE	NSCP	20 500	21 012.50
90	EATON PRIMARY SCHOOL	NSCP	20 500	21 012.50
91	EMBLETON PRIMARY SCHOOL	NSCP	20 500	21 012.50
92	ESPERANCE SENIOR HIGH SCHOOL	NSCP	24 600	25 215.00
93	FAIRVIEW PRIMARY SCHOOL	NSCP	20 500	21 012.50
94	FITZROY VALLEY DISTRICT HIGH SCHOOL	NSCP	24 600	25 215.00
95	FLINDERS PARK PRIMARY SCHOOL	NSCP	20 500	21 012.50
96	FOREST CRESCENT PRIMARY SCHOOL	NSCP	20 500	21 012.50
97	FORRESTFIELD PRIMARY SCHOOL	NSCP	20 500	21 012.50
98	GERALDTON PRIMARY SCHOOL	NSCP	20 500	21 012.50
99	GILMORE COLLEGE	NSCP	20 500	21 012.50
100	GIRRAWHEEN SENIOR HIGH SCHOOL	NSCP	20 500	21 012.50
101	GLEN HUON PRIMARY SCHOOL	NSCP	20 500	21 012.50
102	GLENCOE PRIMARY SCHOOL	NSCP	20 500	21 012.50
103	GNOWANGERUP DISTRICT HIGH SCHOOL	NSCP	24 600	25 215.00
104	GOLDEN BAY PRIMARY SCHOOL	NSCP	20 500	21 012.50
105	GOOMALLING PRIMARY SCHOOL	NSCP	20 500	21 012.50
106	GOSNELLS PRIMARY SCHOOL	NSCP	20 500	21 012.50
107	GREENBUSHES PRIMARY SCHOOL	NSCP	20 500	21 012.50
108	GREENFIELDS PRIMARY SCHOOL	NSCP	20 500	21 012.50
109	GREENMOUNT PRIMARY SCHOOL	NSCP	20 500	21 012.50
110	GROVELANDS PRIMARY SCHOOL	NSCP	20 500	21 012.50
111	HALLS CREEK DISTRICT HIGH SCHOOL	NSCP	24 600	25 215.00
112	HALLS HEAD COLLEGE	NSCP	20 500	21 012.50
113	HALLS HEAD PRIMARY SCHOOL	NSCP	20 500	21 012.50
114	HAMILTON SENIOR HIGH SCHOOL	NSCP	20 500	21 012.50
115	HANNANS PRIMARY SCHOOL	NSCP	20 500	21 012.50
116	HARVEY SENIOR HIGH SCHOOL	NSCP	20 500	21 012.50
117	HILLMAN PRIMARY SCHOOL	NSCP	20 500	21 012.50
118	HILTON PRIMARY SCHOOL	NSCP	20 500	21 012.50
119	HOPETOUN PRIMARY SCHOOL	NSCP	24 600	25 215.00

NSCP – National School Chaplaincy Program

ISSFCP – In School State Funded Chaplaincy Program

Orelia Primary School jointly funded by both NSCP and ISSFCP

	School Name	Program	2017 Funding (\$)	2018 Funding (\$)
120	HUDSON PARK PRIMARY SCHOOL	NSCP	20 500	21 012.50
121	JARRAHDALÉ PRIMARY SCHOOL	NSCP	20 500	21 012.50
122	JOHN TONKIN COLLEGE	NSCP	20 500	21 012.50
123	JOHN WILLCOCK COLLEGE	NSCP	20 500	21 012.50
124	JURIEN BAY DISTRICT HIGH SCHOOL	NSCP	20 500	21 012.50
125	KALBARRI DISTRICT HIGH SCHOOL	NSCP	24 600	25 215.00
126	KAMBALDA WEST DISTRICT HIGH SCHOOL	NSCP	20 500	21 012.50
127	KARRATHA PRIMARY SCHOOL	NSCP	24 600	25 215.00
128	KARRATHA SENIOR HIGH SCHOOL	NSCP	24 600	25 215.00
129	KARRIDALE PRIMARY SCHOOL	NSCP	20 500	21 012.50
130	KARRINYUP PRIMARY SCHOOL	NSCP	20 500	21 012.50
131	KATANNING PRIMARY SCHOOL	NSCP	20 500	21 012.50
132	KATANNING SENIOR HIGH SCHOOL	NSCP	20 500	21 012.50
133	KELLERBERRIN DISTRICT HIGH SCHOOL	NSCP	20 500	21 012.50
134	KEWDALE PRIMARY SCHOOL	NSCP	20 500	21 012.50
135	KIARA COLLEGE	NSCP	20 500	21 012.50
136	KIRUP PRIMARY SCHOOL	NSCP	20 500	21 012.50
137	KOJONUP DISTRICT HIGH SCHOOL	NSCP	20 500	21 012.50
138	KOORANA PRIMARY SCHOOL	NSCP	20 500	21 012.50
139	KUNUNURRA DISTRICT HIGH SCHOOL	NSCP	24 600	25 215.00
140	LAKELANDS PRIMARY SCHOOL	NSCP	20 500	21 012.50
141	LEDA PRIMARY SCHOOL	NSCP	20 500	21 012.50
142	LEEMAN PRIMARY SCHOOL	NSCP	24 600	25 215.00
143	LEONORA DISTRICT HIGH SCHOOL	NSCP	24 600	25 215.00
144	LITTLE GROVE PRIMARY SCHOOL	NSCP	20 500	21 012.50
145	LOCKRIDGE PRIMARY SCHOOL	NSCP	20 500	21 012.50
146	MADDINGTON PRIMARY SCHOOL	NSCP	20 500	21 012.50
147	MAIDENS PARK PRIMARY SCHOOL	NSCP	20 500	21 012.50
148	MANDURAH PRIMARY SCHOOL	NSCP	20 500	21 012.50
149	MANJIMUP EDUCATION SUPPORT CENTRE	NSCP	20 500	21 012.50
150	MANJIMUP SENIOR HIGH SCHOOL	NSCP	20 500	21 012.50
151	MEADOW SPRINGS EDUCATION SUPPORT CENTRE	NSCP	20 500	21 012.50
152	MEADOW SPRINGS PRIMARY SCHOOL	NSCP	20 500	21 012.50
153	MEDINA PRIMARY SCHOOL	NSCP	20 500	21 012.50
154	MEEKATHARRA DISTRICT HIGH SCHOOL	NSCP	24 600	25 215.00
155	MERREDIN COLLEGE	NSCP	20 500	21 012.50
156	MERRIWA EDUCATION SUPPORT CENTRE	NSCP	20 500	21 012.50
157	MERRIWA PRIMARY SCHOOL	NSCP	20 500	21 012.50
158	MIDVALE PRIMARY SCHOOL	NSCP	20 500	21 012.50
159	MINGENEW PRIMARY SCHOOL	NSCP	20 500	21 012.50

NSCP – National School Chaplaincy Program

ISSFCP – In School State Funded Chaplaincy Program

Orelia Primary School jointly funded by both NSCP and ISSFCP

	School Name	Program	2017 Funding (\$)	2018 Funding (\$)
160	MOORA PRIMARY SCHOOL	NSCP	20 500	21 012.50
161	MOORDITJ NOONGAR COMMUNITY COLLEGE	NSCP	20 500	21 012.50
162	MORAWA DISTRICT HIGH SCHOOL	NSCP	24 600	25 215.00
163	MORLEY PRIMARY SCHOOL	NSCP	20 500	21 012.50
164	MOUNT LOCKYER PRIMARY SCHOOL	NSCP	20 500	21 012.50
165	MOUNT MAGNET DISTRICT HIGH SCHOOL	NSCP	24 600	25 215.00
166	MUKINBUDIN DISTRICT HIGH SCHOOL	NSCP	24 600	25 215.00
167	MULLEWA DISTRICT HIGH SCHOOL	NSCP	24 600	25 215.00
168	MUNDIJONG PRIMARY SCHOOL	NSCP	20 500	21 012.50
169	NARROGIN PRIMARY SCHOOL	NSCP	20 500	21 012.50
170	NEERIGEN BROOK PRIMARY SCHOOL	NSCP	20 500	21 012.50
171	NEWMAN PRIMARY SCHOOL	NSCP	24 600	25 215.00
172	NEWMAN SENIOR HIGH SCHOOL	NSCP	24 600	25 215.00
173	NEWTON MOORE EDUCATION SUPPORT CENTRE	NSCP	20 500	21 012.50
174	NEWTON MOORE SENIOR HIGH SCHOOL	NSCP	20 500	21 012.50
175	NEWTON PRIMARY SCHOOL	NSCP	20 500	21 012.50
176	NOLLAMARA PRIMARY SCHOOL	NSCP	20 500	21 012.50
177	NORTH ALBANY SENIOR HIGH SCHOOL	NSCP	20 500	21 012.50
178	NORTH BALGA PRIMARY SCHOOL	NSCP	20 500	21 012.50
179	NORTH DANDALUP PRIMARY SCHOOL	NSCP	20 500	21 012.50
180	NORTH KALGOORLIE PRIMARY SCHOOL	NSCP	20 500	21 012.50
181	NORTH LAKE SENIOR CAMPUS	NSCP	20 500	21 012.50
182	NORTH MANDURAH PRIMARY SCHOOL	NSCP	20 500	21 012.50
183	NORTH TOM PRICE PRIMARY SCHOOL	NSCP	24 600	25 215.00
184	NORTHAM PRIMARY SCHOOL	NSCP	20 500	21 012.50
185	NORTHAMPTON DISTRICT HIGH SCHOOL	NSCP	20 500	21 012.50
186	NORTHCLIFFE DISTRICT HIGH SCHOOL	NSCP	24 600	25 215.00
187	NULSEN PRIMARY SCHOOL	NSCP	24 600	25 215.00
188	O'CONNOR PRIMARY SCHOOL	NSCP	20 500	21 012.50
189	ONSLow PRIMARY SCHOOL	NSCP	24 600	25 215.00
190	ORANGE GROVE PRIMARY SCHOOL	NSCP	20 500	21 012.50
191	ORELIA PRIMARY SCHOOL	NSCP/ISSFCP	20 500	21 012.50
192	OSBORNE PRIMARY SCHOOL	NSCP	20 500	21 012.50
193	PANNAWONICA PRIMARY SCHOOL	NSCP	24 600	25 215.00
194	PEGS CREEK PRIMARY SCHOOL	NSCP	24 600	25 215.00
195	PEMBERTON DISTRICT HIGH SCHOOL	NSCP	20 500	21 012.50
196	PERENJORI PRIMARY SCHOOL	NSCP	24 600	25 215.00
197	PINGELLY PRIMARY SCHOOL	NSCP	20 500	21 012.50
198	PINJARRA PRIMARY SCHOOL	NSCP	20 500	21 012.50
199	PINJARRA SENIOR HIGH SCHOOL	NSCP	20 500	21 012.50

NSCP – National School Chaplaincy Program

ISSFCP – In School State Funded Chaplaincy Program

Orelia Primary School jointly funded by both NSCP and ISSFCP

	School Name	Program	2017 Funding (\$)	2018 Funding (\$)
200	QUAIRADING DISTRICT HIGH SCHOOL	NSCP	20 500	21 012.50
201	QUEENS PARK PRIMARY SCHOOL	NSCP	20 500	21 012.50
202	RANGEWAY PRIMARY SCHOOL	NSCP	20 500	21 012.50
203	RAVENSTHORPE DISTRICT HIGH SCHOOL	NSCP	24 500	25 215.00
204	RIVERSIDE PRIMARY SCHOOL	NSCP	20 500	21 012.50
205	RIVERVALE PRIMARY SCHOOL (WAS TRANBY PS)	NSCP	20 500	21 012.50
206	ROCKINGHAM BEACH EDUCATION SUPPORT CENTRE	NSCP	20 500	21 012.50
207	ROCKINGHAM SENIOR HIGH SCHOOL	NSCP	20 500	21 012.50
208	ROSEWORTH PRIMARY SCHOOL	NSCP	20 500	21 012.50
209	SAMSON PRIMARY SCHOOL	NSCP	20 500	21 012.50
210	SAWYERS VALLEY PRIMARY SCHOOL	NSCP	20 500	21 012.50
211	SCHOOL OF SPECIAL EDUCATION NEEDS: MEDICAL AND MENTAL HEALTH	NSCP	20 500	21 012.50
212	SERPENTINE PRIMARY SCHOOL	NSCP	20 500	21 012.50
213	SOMERLY PRIMARY SCHOOL	NSCP	20 500	21 012.50
214	SOUTH BALLAJURA EDUCATION SUPPORT CENTRE	NSCP	20 500	21 012.50
215	SOUTH BUNBURY PRIMARY SCHOOL	NSCP	20 500	21 012.50
216	SOUTH HALLS HEAD PRIMARY SCHOOL	NSCP	20 500	21 012.50
217	SOUTH HEDLAND PRIMARY SCHOOL	NSCP	24 600	25 215.00
218	SOUTH KALGOORLIE PRIMARY SCHOOL	NSCP	20 500	21 012.50
219	SOUTH LAKE PRIMARY SCHOOL	NSCP	20 500	21 012.50
220	SOUTH NEWMAN PRIMARY SCHOOL	NSCP	24 600	25 215.00
221	SOUTH STIRLING PRIMARY SCHOOL	NSCP	20 500	21 012.50
222	SOUTHWELL PRIMARY SCHOOL	NSCP	20 500	21 012.50
223	SPENCER PARK EDUCATION SUPPORT CENTRE	NSCP	20 500	21 012.50
224	SPENCER PARK PRIMARY SCHOOL	NSCP	20 500	21 012.50
225	SWAN VIEW PRIMARY SCHOOL	NSCP	20 500	21 012.50
226	TAKARI PRIMARY SCHOOL	NSCP	20 500	21 012.50
227	TABELLUP PRIMARY SCHOOL	NSCP	20 500	21 012.50
228	TAMBREY PRIMARY SCHOOL	NSCP	24 600	25 215.00
229	THORNLIE SENIOR HIGH SCHOOL	NSCP	20 500	21 012.50
230	TOM PRICE PRIMARY SCHOOL	NSCP	24 600	25 215.00
231	TOM PRICE SENIOR HIGH SCHOOL	NSCP	24 600	25 215.00
232	TRAYNING PRIMARY SCHOOL	NSCP	24 600	25 215.00
233	TUART FOREST PRIMARY SCHOOL	NSCP	20 500	21 012.50
234	WAGGRAKINE PRIMARY SCHOOL	NSCP	20 500	21 012.50
235	WAGIN DISTRICT HIGH SCHOOL	NSCP	20 500	21 012.50
236	WANDINA PRIMARY SCHOOL	NSCP	20 500	21 012.50
237	WANNEROO PRIMARY SCHOOL	NSCP	20 500	21 012.50
238	WAROONA DISTRICT HIGH SCHOOL	NSCP	20 500	21 012.50

NSCP – National School Chaplaincy Program

ISSFCP – In School State Funded Chaplaincy Program

Orelia Primary School jointly funded by both NSCP and ISSFCP

	School Name	Program	2017 Funding (\$)	2018 Funding (\$)
239	WARRIAPENDI PRIMARY SCHOOL	NSCP	20 500	21 012.50
240	WELD SQUARE PRIMARY SCHOOL	NSCP	20 500	21 012.50
241	WEST BYFORD PRIMARY SCHOOL	NSCP	20 500	21 012.50
242	WEST NORTHAM PRIMARY SCHOOL	NSCP	20 500	21 012.50
243	WESTERN AUSTRALIAN COLLEGE OF AGRICULTURE-HARVEY	NSCP	20 500	21 012.50
244	WESTMINSTER JUNIOR PRIMARY SCHOOL	NSCP	20 500	21 012.50
245	WESTMINSTER PRIMARY SCHOOL	NSCP	20 500	21 012.50
246	WILLANDRA PRIMARY SCHOOL	NSCP	20 500	21 012.50
247	WILSON PARK PRIMARY SCHOOL	NSCP	20 500	21 012.50
248	WINTERFOLD PRIMARY SCHOOL	NSCP	20 500	21 012.50
249	WOODBIDGE PRIMARY SCHOOL	NSCP	20 500	21 012.50
250	WOODLUPINE PRIMARY SCHOOL	NSCP	20 500	21 012.50
251	WOOROLOO PRIMARY SCHOOL	NSCP	20 500	21 012.50
252	YAKAMIA PRIMARY SCHOOL	NSCP	20 500	21 012.50
253	YANCHEP DISTRICT HIGH SCHOOL	NSCP	20 500	21 012.50
254	YANGEBUP PRIMARY SCHOOL	NSCP	20 500	21 012.50
255	YEALERING PRIMARY SCHOOL	NSCP	20 500	21 012.50
256	YORK DISTRICT HIGH SCHOOL	NSCP	20 500	21 012.50
257	YULE BROOK COLLEGE	NSCP	20 500	21 012.50
258	YULUMA PRIMARY SCHOOL	NSCP	20 500	21 012.50
259	ADAM ROAD PRIMARY SCHOOL	ISSFCP	20 500	21 012.50
260	ALBANY PRIMARY SCHOOL	ISSFCP	20 500	21 012.50
261	ALINJARRA PRIMARY SCHOOL	ISSFCP	20 500	21 012.50
262	ALLANSON PRIMARY SCHOOL	ISSFCP	20 500	21 012.50
263	APPLECROSS PRIMARY SCHOOL	ISSFCP	20 500	21 012.50
264	APPLECROSS SENIOR HIGH SCHOOL	ISSFCP	20 500	21 012.50
265	ARBOR GROVE PRIMARY SCHOOL	ISSFCP	20 500	21 012.50
266	ARDROSS PRIMARY SCHOOL	ISSFCP	20 500	21 012.50
267	ASHDALE PRIMARY SCHOOL	ISSFCP	20 500	21 012.50
268	ATTADALE PRIMARY SCHOOL	ISSFCP	20 500	21 012.50
269	ATWELL COLLEGE	ISSFCP	20 500	21 012.50
270	ATWELL PRIMARY SCHOOL	ISSFCP	20 500	21 012.50
271	AUBIN GROVE PRIMARY SCHOOL	ISSFCP	20 500	21 012.50
272	BALCATT SENIOR HIGH SCHOOL	ISSFCP	20 500	21 012.50
273	BALDIVIS SECONDARY COLLEGE	ISSFCP	20 500	21 012.50
274	BALLAJURA PRIMARY SCHOOL	ISSFCP	20 500	21 012.50
275	BANKSIA GROVE PRIMARY SCHOOL (WAS NEERABUP PS)	ISSFCP	20 500	21 012.50
276	BANNISTER CREEK PRIMARY SCHOOL	ISSFCP	20 500	21 012.50
277	BASSENDAN PRIMARY SCHOOL	ISSFCP	20 500	21 012.50

NSCP – National School Chaplaincy Program

ISSFCP – In School State Funded Chaplaincy Program

Orelia Primary School jointly funded by both NSCP and ISSFCP

	School Name	Program	2017 Funding (\$)	2018 Funding (\$)
278	BAYNTON WEST PRIMARY SCHOOL	ISSFCP	24 600	25 215.00
279	BEAUMARIS PRIMARY SCHOOL	ISSFCP	20 500	21 012.50
280	BECKENHAM PRIMARY SCHOOL	ISSFCP	20 500	21 012.50
281	BELRIDGE SECONDARY COLLEGE	ISSFCP	20 500	21 012.50
282	BELRIDGE SECONDARY EDUCATION SUPPORT CENTRE	ISSFCP	20 500	21 012.50
283	BIBRA LAKE PRIMARY SCHOOL	ISSFCP	20 500	21 012.50
284	BICTON PRIMARY SCHOOL	ISSFCP	20 500	21 012.50
285	BLETCHLEY PARK PRIMARY SCHOOL	ISSFCP	20 500	21 012.50
286	BOORAGOON PRIMARY SCHOOL	ISSFCP	20 500	21 012.50
287	BOYUP BROOK DISTRICT HIGH SCHOOL	ISSFCP	20 500	21 012.50
288	BRENTWOOD PRIMARY SCHOOL	ISSFCP	20 500	21 012.50
289	BRIDGETOWN HIGH SCHOOL	ISSFCP	20 500	21 012.50
290	BRUCE ROCK DISTRICT HIGH SCHOOL	ISSFCP	24 600	25 215.00
291	BULLSBROOK COLLEGE	ISSFCP	20 500	21 012.50
292	BUNBURY SENIOR HIGH SCHOOL	ISSFCP	20 500	21 012.50
293	BUTLER COLLEGE	ISSFCP	20 500	21 012.50
294	BUTLER PRIMARY SCHOOL	ISSFCP	20 500	21 012.50
295	BYFORD SECONDARY COLLEGE	ISSFCP	20 500	21 012.50
296	CAMBOON PRIMARY SCHOOL	ISSFCP	20 500	21 012.50
297	CANNING VALE COLLEGE	ISSFCP	20 500	21 012.50
298	CANNING VALE PRIMARY SCHOOL	ISSFCP	20 500	21 012.50
299	CANNINGTON COMMUNITY EDUCATION SUPPORT CENTRE	ISSFCP	20 500	21 012.50
300	CAPE NATURALISTE COLLEGE	ISSFCP	20 500	21 012.50
301	CARINE SENIOR HIGH SCHOOL	ISSFCP	20 500	21 012.50
302	CARLISLE PRIMARY SCHOOL	ISSFCP	20 500	21 012.50
303	CARRAMAR PRIMARY SCHOOL	ISSFCP	20 500	21 012.50
304	CARSON STREET SCHOOL	ISSFCP	20 500	21 012.50
305	CASTLETOWN PRIMARY SCHOOL	ISSFCP	24 600	25 215.00
306	CAVERSHAM PRIMARY SCHOOL	ISSFCP	20 500	21 012.50
307	CHURCHLANDS PRIMARY SCHOOL	ISSFCP	20 500	21 012.50
308	CHURCHLANDS SENIOR HIGH SCHOOL	ISSFCP	20 500	21 012.50
309	CLIFTON HILLS PRIMARY SCHOOL	ISSFCP	20 500	21 012.50
310	COLLIER PRIMARY SCHOOL	ISSFCP	20 500	21 012.50
311	COMET BAY COLLEGE	ISSFCP	20 500	21 012.50
312	COMET BAY PRIMARY SCHOOL	ISSFCP	20 500	21 012.50
313	COMO SECONDARY COLLEGE	ISSFCP	20 500	21 012.50
314	CONDINGUP PRIMARY SCHOOL	ISSFCP	24 600	25 215.00
315	CONNOLLY PRIMARY SCHOOL	ISSFCP	20 500	21 012.50
316	COOLBINIA PRIMARY SCHOOL	ISSFCP	20 500	21 012.50

NSCP – National School Chaplaincy Program

ISSFCP – In School State Funded Chaplaincy Program

Orelia Primary School jointly funded by both NSCP and ISSFCP

	School Name	Program	2017 Funding (\$)	2018 Funding (\$)
317	COWARAMUP PRIMARY SCHOOL	ISSFCP	20 500	21 012.50
318	CRAIGIE HEIGHTS PRIMARY SCHOOL	ISSFCP	20 500	21 012.50
319	CRANBROOK PRIMARY SCHOOL	ISSFCP	20 500	21 012.50
320	CREANEY PRIMARY SCHOOL	ISSFCP	20 500	21 012.50
321	CURRAMBINE PRIMARY SCHOOL	ISSFCP	20 500	21 012.50
322	DALYELLUP PRIMARY SCHOOL	ISSFCP	20 500	21 012.50
323	DARLING RANGE SPORTS COLLEGE	ISSFCP	20 500	21 012.50
324	DARLINGTON PRIMARY SCHOOL	ISSFCP	20 500	21 012.50
325	DAVALLIA PRIMARY SCHOOL	ISSFCP	20 500	21 012.50
326	DENMARK PRIMARY SCHOOL	ISSFCP	20 500	21 012.50
327	DENMARK SENIOR HIGH SCHOOL	ISSFCP	20 500	21 012.50
328	DUNCRAIG SENIOR HIGH SCHOOL	ISSFCP	20 500	21 012.50
329	DUNSBOROUGH PRIMARY SCHOOL	ISSFCP	20 500	21 012.50
330	EAST FREMANTLE PRIMARY SCHOOL	ISSFCP	20 500	21 012.50
331	EASTERN HILLS SENIOR HIGH SCHOOL	ISSFCP	20 500	21 012.50
332	EDDYSTONE PRIMARY SCHOOL	ISSFCP	20 500	21 012.50
333	EDEN HILL PRIMARY SCHOOL	ISSFCP	20 500	21 012.50
334	EDGEWATER PRIMARY SCHOOL	ISSFCP	20 500	21 012.50
335	EDNEY PRIMARY SCHOOL	ISSFCP	20 500	21 012.50
336	ELLEN STIRLING PRIMARY SCHOOL	ISSFCP	20 500	21 012.50
337	ELLENBROOK PRIMARY SCHOOL	ISSFCP	20 500	21 012.50
338	ELLENBROOK SECONDARY COLLEGE	ISSFCP	20 500	21 012.50
339	ENDEAVOUR EDUCATION SUPPORT CENTRE	ISSFCP	20 500	21 012.50
340	ENDEAVOUR PRIMARY SCHOOL	ISSFCP	20 500	21 012.50
341	ESPERANCE PRIMARY SCHOOL	ISSFCP	24 600	25 215.00
342	EXCELSIOR PRIMARY SCHOOL	ISSFCP	20 500	21 012.50
343	FALCON PRIMARY SCHOOL	ISSFCP	20 500	21 012.50
344	FLOREAT PARK PRIMARY SCHOOL	ISSFCP	20 500	21 012.50
345	FREMANTLE LANGUAGE DEVELOPMENT CENTRE	ISSFCP	20 500	21 012.50
346	FREMANTLE PRIMARY SCHOOL	ISSFCP	20 500	21 012.50
347	GAIRDNER PRIMARY SCHOOL	ISSFCP	24 600	25 215.00
348	GEOGRAPHE PRIMARY SCHOOL	ISSFCP	20 500	21 012.50
349	GERALDTON SENIOR COLLEGE	ISSFCP	20 500	21 012.50
350	GIDGEGANNUP PRIMARY SCHOOL	ISSFCP	20 500	21 012.50
351	GINGIN DISTRICT HIGH SCHOOL	ISSFCP	20 500	21 012.50
352	GLEN FORREST PRIMARY SCHOOL	ISSFCP	20 500	21 012.50
353	GLENDALE PRIMARY SCHOOL	ISSFCP	20 500	21 012.50
354	GLENGARRY PRIMARY SCHOOL	ISSFCP	20 500	21 012.50
355	GOOLLELAL PRIMARY SCHOOL	ISSFCP	20 500	21 012.50
356	GOOSEBERRY HILL PRIMARY SCHOOL	ISSFCP	20 500	21 012.50

NSCP – National School Chaplaincy Program

ISSFCP – In School State Funded Chaplaincy Program

Orelia Primary School jointly funded by both NSCP and ISSFCP

	School Name	Program	2017 Funding (\$)	2018 Funding (\$)
357	GOVERNOR STIRLING SENIOR HIGH SCHOOL	ISSFCP	20 500	21 012.50
358	GREENWOOD COLLEGE	ISSFCP	20 500	21 012.50
359	GREENWOOD PRIMARY SCHOOL	ISSFCP	20 500	21 012.50
360	HALIDON PRIMARY SCHOOL	ISSFCP	20 500	21 012.50
361	HAMPTON PARK PRIMARY SCHOOL	ISSFCP	20 500	21 012.50
362	HAMPTON SENIOR HIGH SCHOOL	ISSFCP	20 500	21 012.50
363	HARMONY PRIMARY SCHOOL	ISSFCP	20 500	21 012.50
364	HAWKER PARK PRIMARY SCHOOL	ISSFCP	20 500	21 012.50
365	HEATHRIDGE PRIMARY SCHOOL	ISSFCP	20 500	21 012.50
366	HELENA VALLEY PRIMARY SCHOOL	ISSFCP	20 500	21 012.50
367	HERNE HILL PRIMARY SCHOOL	ISSFCP	20 500	21 012.50
368	HIGH WYCOMBE PRIMARY SCHOOL	ISSFCP	20 500	21 012.50
369	HOCKING PRIMARY SCHOOL	ISSFCP	20 500	21 012.50
370	ILLAWARRA PRIMARY SCHOOL	ISSFCP	20 500	21 012.50
371	INGLEWOOD PRIMARY SCHOOL	ISSFCP	20 500	21 012.50
372	JANDAKOT PRIMARY SCHOOL	ISSFCP	20 500	21 012.50
373	JOHN CURTIN COLLEGE OF THE ARTS	ISSFCP	20 500	21 012.50
374	JOHN FORREST SECONDARY COLLEGE	ISSFCP	20 500	21 012.50
375	JOONDALUP EDUCATION SUPPORT CENTRE	ISSFCP	20 500	21 012.50
376	JOONDALUP PRIMARY SCHOOL	ISSFCP	20 500	21 012.50
377	KALAMUNDA SENIOR HIGH SCHOOL	ISSFCP	20 500	21 012.50
378	KARDINYA PRIMARY SCHOOL	ISSFCP	20 500	21 012.50
379	KELMSCOTT PRIMARY SCHOOL	ISSFCP	20 500	21 012.50
380	KELMSCOTT SENIOR HIGH SCHOOL	ISSFCP	20 500	21 012.50
381	KENSINGTON PRIMARY SCHOOL	ISSFCP	20 500	21 012.50
382	KENT STREET SENIOR HIGH SCHOOL	ISSFCP	20 500	21 012.50
383	KINGSTON PRIMARY SCHOOL	ISSFCP	20 500	21 012.50
384	KINROSS COLLEGE	ISSFCP	20 500	21 012.50
385	KINROSS PRIMARY SCHOOL	ISSFCP	20 500	21 012.50
386	KOORANA EDUCATION SUPPORT CENTRE	ISSFCP	20 500	21 012.50
387	KUKERIN PRIMARY SCHOOL	ISSFCP	24 600	25 215.00
388	KYILLA PRIMARY SCHOOL	ISSFCP	20 500	21 012.50
389	LAKE GRACE DISTRICT HIGH SCHOOL	ISSFCP	24 600	25 215.00
390	LAKE GWELUP PRIMARY SCHOOL	ISSFCP	20 500	21 012.50
391	LAKELAND SENIOR HIGH SCHOOL	ISSFCP	20 500	21 012.50
392	LANDSDALE PRIMARY SCHOOL	ISSFCP	20 500	21 012.50
393	LATHLAIN PRIMARY SCHOOL	ISSFCP	20 500	21 012.50
394	LEDA EDUCATION SUPPORT CENTRE	ISSFCP	20 500	21 012.50
395	LEEMING PRIMARY SCHOOL	ISSFCP	20 500	21 012.50
396	LEEMING SENIOR HIGH SCHOOL	ISSFCP	20 500	21 012.50

NSCP – National School Chaplaincy Program

ISSFCP – In School State Funded Chaplaincy Program

Orelia Primary School jointly funded by both NSCP and ISSFCP

	School Name	Program	2017 Funding (\$)	2018 Funding (\$)
397	LEEMING SENIOR HIGH SCHOOL EDUCATION SUPPORT CENTRE	ISSFCP	20 500	21 012.50
398	LYNWOOD SENIOR HIGH SCHOOL	ISSFCP	20 500	21 012.50
399	MALVERN SPRINGS PRIMARY SCHOOL	ISSFCP	20 500	21 012.50
400	MANJIMUP PRIMARY SCHOOL	ISSFCP	20 500	21 012.50
401	MANNING PRIMARY SCHOOL	ISSFCP	20 500	21 012.50
402	MARANGAROO PRIMARY SCHOOL	ISSFCP	20 500	21 012.50
403	MARGARET RIVER PRIMARY SCHOOL	ISSFCP	20 500	21 012.50
404	MARGARET RIVER SENIOR HIGH SCHOOL	ISSFCP	20 500	21 012.50
405	MARRI GROVE PRIMARY SCHOOL	ISSFCP	20 500	21 012.50
406	MAYLANDS PENINSULA PRIMARY SCHOOL	ISSFCP	20 500	21 012.50
407	MELVILLE PRIMARY SCHOOL	ISSFCP	20 500	21 012.50
408	MELVILLE SENIOR HIGH SCHOOL	ISSFCP	20 500	21 012.50
409	MILING PRIMARY SCHOOL	ISSFCP	20 500	21 012.50
410	MINDARIE SENIOR COLLEGE	ISSFCP	20 500	21 012.50
411	MIRRABOOKA SENIOR HIGH SCHOOL	ISSFCP	20 500	21 012.50
412	MORLEY SENIOR HIGH SCHOOL	ISSFCP	20 500	21 012.50
413	MOSMAN PARK PRIMARY SCHOOL	ISSFCP	20 500	21 012.50
414	MOUNT BARKER COMMUNITY COLLEGE	ISSFCP	20 500	21 012.50
415	MOUNT CLAREMONT PRIMARY SCHOOL	ISSFCP	20 500	21 012.50
416	MOUNT HELENA PRIMARY SCHOOL	ISSFCP	20 500	21 012.50
417	MOUNT LAWLEY PRIMARY SCHOOL	ISSFCP	20 500	21 012.50
418	MOUNT LAWLEY SENIOR HIGH SCHOOL	ISSFCP	20 500	21 012.50
419	MOUNT PLEASANT PRIMARY SCHOOL	ISSFCP	20 500	21 012.50
420	MOUNT TARCOOLA PRIMARY SCHOOL	ISSFCP	20 500	21 012.50
421	MULLALOO BEACH PRIMARY SCHOOL	ISSFCP	20 500	21 012.50
422	MULLALOO HEIGHTS PRIMARY SCHOOL	ISSFCP	20 500	21 012.50
423	MUNDARING PRIMARY SCHOOL	ISSFCP	20 500	21 012.50
424	NARROGIN SENIOR HIGH SCHOOL	ISSFCP	20 500	21 012.50
425	NEDLANDS PRIMARY SCHOOL	ISSFCP	20 500	21 012.50
426	NEWBOROUGH PRIMARY SCHOOL	ISSFCP	20 500	21 012.50
427	NORANDA PRIMARY SCHOOL	ISSFCP	20 500	21 012.50
428	NORTH COTTESLOE PRIMARY SCHOOL	ISSFCP	20 500	21 012.50
429	NORTH WOODVALE PRIMARY SCHOOL	ISSFCP	20 500	21 012.50
430	OBERTHUR PRIMARY SCHOOL	ISSFCP	20 500	21 012.50
431	OCEAN REEF PRIMARY SCHOOL	ISSFCP	20 500	21 012.50
432	OCEAN REEF SENIOR HIGH SCHOOL	ISSFCP	20 500	21 012.50
433	ONGERUP PRIMARY SCHOOL	ISSFCP	24 600	25 215.00
434	PADBURY PRIMARY SCHOOL	ISSFCP	20 500	21 012.50
435	PALMYRA PRIMARY SCHOOL	ISSFCP	20 500	21 012.50

NSCP – National School Chaplaincy Program

ISSFCP – In School State Funded Chaplaincy Program

Orelia Primary School jointly funded by both NSCP and ISSFCP

	School Name	Program	2017 Funding (\$)	2018 Funding (\$)
436	PARKERVILLE PRIMARY SCHOOL	ISSFCP	20 500	21 012.50
437	PARKFIELD PRIMARY SCHOOL	ISSFCP	20 500	21 012.50
438	PEARSALL PRIMARY SCHOOL	ISSFCP	20 500	21 012.50
439	PERTH MODERN SCHOOL	ISSFCP	20 500	21 012.50
440	PICKERING BROOK PRIMARY SCHOOL	ISSFCP	20 500	21 012.50
441	PINGRUP PRIMARY SCHOOL	ISSFCP	24 600	25 215.00
442	PORT KENNEDY PRIMARY SCHOOL	ISSFCP	20 500	21 012.50
443	POSEIDON PRIMARY SCHOOL	ISSFCP	20 500	21 012.50
444	POYNTER PRIMARY SCHOOL	ISSFCP	20 500	21 012.50
445	QUINNS BEACH PRIMARY SCHOOL	ISSFCP	20 500	21 012.50
446	QUINNS ROCKS PRIMARY SCHOOL	ISSFCP	20 500	21 012.50
447	RANFORD PRIMARY SCHOOL	ISSFCP	20 500	21 012.50
448	RICHMOND PRIMARY SCHOOL	ISSFCP	20 500	21 012.50
449	ROCKINGHAM BEACH PRIMARY SCHOOL	ISSFCP	20 500	21 012.50
450	ROCKINGHAM LAKES PRIMARY SCHOOL	ISSFCP	20 500	21 012.50
451	ROSALIE PRIMARY SCHOOL	ISSFCP	20 500	21 012.50
452	ROSSMOYNE SENIOR HIGH SCHOOL	ISSFCP	20 500	21 012.50
453	ROSTRATA PRIMARY SCHOOL	ISSFCP	20 500	21 012.50
454	SAFETY BAY PRIMARY SCHOOL	ISSFCP	20 500	21 012.50
455	SAFETY BAY SENIOR HIGH SCHOOL	ISSFCP	20 500	21 012.50
456	SCARBOROUGH PRIMARY SCHOOL	ISSFCP	20 500	21 012.50
457	SHENTON COLLEGE	ISSFCP	20 500	21 012.50
458	SHENTON COLLEGE DEAF EDUCATION CENTRE	ISSFCP	20 500	21 012.50
459	SINGLETON PRIMARY SCHOOL	ISSFCP	20 500	21 012.50
460	SIR DAVID BRAND SCHOOL	ISSFCP	20 500	21 012.50
461	SOUTH BALLAJURA PRIMARY SCHOOL	ISSFCP	20 500	21 012.50
462	SOUTH COOGEE PRIMARY SCHOOL	ISSFCP	20 500	21 012.50
463	SOUTH EAST METROPOLITAN LANGUAGE DEVELOPMENT CENTRE	ISSFCP	20 500	21 012.50
464	SOUTH PERTH PRIMARY SCHOOL	ISSFCP	20 500	21 012.50
465	SPEARWOOD ALTERNATIVE SCHOOL	ISSFCP	20 500	21 012.50
466	SPEARWOOD PRIMARY SCHOOL	ISSFCP	20 500	21 012.50
467	SPRING HILL PRIMARY SCHOOL	ISSFCP	20 500	21 012.50
468	SPRINGFIELD PRIMARY SCHOOL	ISSFCP	20 500	21 012.50
469	SUBIACO PRIMARY SCHOOL	ISSFCP	20 500	21 012.50
470	SUCCESS PRIMARY SCHOOL	ISSFCP	20 500	21 012.50
471	TREENDALE PRIMARY SCHOOL	ISSFCP	20 500	21 012.50
472	TUART RISE PRIMARY SCHOOL (WAS BALDIVIS PS)	ISSFCP	20 500	21 012.50
473	UPPER SWAN PRIMARY SCHOOL	ISSFCP	20 500	21 012.50
474	VASSE PRIMARY SCHOOL	ISSFCP	20 500	21 012.50

NSCP – National School Chaplaincy Program

ISSFCP – In School State Funded Chaplaincy Program

Orelia Primary School jointly funded by both NSCP and ISSFCP

	School Name	Program	2017 Funding (\$)	2018 Funding (\$)
475	WADDINGTON PRIMARY SCHOOL	ISSFCP	20 500	21 012.50
476	WALLISTON PRIMARY SCHOOL	ISSFCP	20 500	21 012.50
477	WANDERING PRIMARY SCHOOL	ISSFCP	20 500	21 012.50
478	WANNEROO SECONDARY COLLEGE	ISSFCP	20 500	21 012.50
479	WARNBRO COMMUNITY HIGH SCHOOL	ISSFCP	20 500	21 012.50
480	WARNBRO PRIMARY SCHOOL	ISSFCP	20 500	21 012.50
481	WARWICK SENIOR HIGH SCHOOL	ISSFCP	20 500	21 012.50
482	WATTLE GROVE PRIMARY SCHOOL	ISSFCP	20 500	21 012.50
483	WEMBLEY DOWNS PRIMARY SCHOOL	ISSFCP	20 500	21 012.50
484	WEST BALCATT A PRIMARY SCHOOL	ISSFCP	20 500	21 012.50
485	WEST BUSSELTON PRIMARY SCHOOL	ISSFCP	20 500	21 012.50
486	WEST GREENWOOD PRIMARY SCHOOL	ISSFCP	20 500	21 012.50
487	WEST LEEDERVILLE PRIMARY SCHOOL	ISSFCP	20 500	21 012.50
488	WEST LEEMING PRIMARY SCHOOL	ISSFCP	20 500	21 012.50
489	WEST MORLEY PRIMARY SCHOOL	ISSFCP	20 500	21 012.50
490	WESTERN AUSTRALIAN COLLEGE OF AGRICULTURE - DENMARK	ISSFCP	20 500	21 012.50
491	WESTERN AUSTRALIAN COLLEGE OF AGRICULTURE - NARROGIN	ISSFCP	20 500	21 012.50
492	WHITE GUM VALLEY PRIMARY SCHOOL	ISSFCP	20 500	21 012.50
493	WILLETTON PRIMARY SCHOOL	ISSFCP	20 500	21 012.50
494	WILLETTON SENIOR HIGH SCHOOL	ISSFCP	20 500	21 012.50
495	WILSON PRIMARY SCHOOL	ISSFCP	20 500	21 012.50
496	WIRRABIRRA PRIMARY SCHOOL	ISSFCP	20 500	21 012.50
497	WOODVALE PRIMARY SCHOOL	ISSFCP	20 500	21 012.50
498	WOODVALE SECONDARY COLLEGE	ISSFCP	20 500	21 012.50
499	WYALKATCHEM DISTRICT HIGH SCHOOL	ISSFCP	24 600	25 215.00
500	YALE PRIMARY SCHOOL	ISSFCP	20 500	21 012.50
501	YARLOOP PRIMARY SCHOOL	ISSFCP	20 500	21 012.50

NSCP – National School Chaplaincy Program

ISSFCP – In School State Funded Chaplaincy Program

Orelia Primary School jointly funded by both NSCP and ISSFCP

ATTACHMENT 2**SCHOOLS NOT UTILISING THEIR CHAPLAINCY FUNDING DUE TO INABILITY TO SECURE A CHAPLAIN**

	School Name
1.	BREMER BAY PRIMARY SCHOOL
2.	BRIDGETOWN HIGH SCHOOL
3.	BROOME SENIOR HIGH SCHOOL
4.	COOROW PRIMARY SCHOOL
5.	CRANBROOK PRIMARY SCHOOL
6.	EAST KALGOORLIE PRIMARY SCHOOL
7.	KOORANA EDUCATION SUPPORT CENTRE
8.	KOORANA PRIMARY SCHOOL
9.	LEDA EDUCATION SUPPORT CENTRE
10.	MEEKATHARRA DISTRICT HIGH SCHOOL
11.	MINGENEW PRIMARY SCHOOL
12.	MOORA PRIMARY SCHOOL
13.	MULLEWA DISTRICT HIGH SCHOOL
14.	NEWTON PRIMARY SCHOOL
15.	PERENJORI PRIMARY SCHOOL
16.	TRAYNING PRIMARY SCHOOL
17.	WANDERING PRIMARY SCHOOL
18.	WARNBRO PRIMARY SCHOOL
19.	WESTERN AUSTRALIAN COLLEGE OF AGRICULTURE - HARVEY
20.	WYALKATCHEM DISTRICT HIGH SCHOOL

ESTIMATES AND FINANCIAL OPERATIONS COMMITTEE

Department of Education

Hon Martin Aldridge MLC asked:

2. I refer to page 13 and 14 of the hearing transcript and I ask:
- (a) Can you please provide a copy of the policy or guidelines used by the government to assess the potential closure of schools; and
 - (b) With respect to the classification of remote community and isolated schools and rural primary schools, can you please list the twenty smallest schools that fall within each category including their enrolment number for 2017 and projected enrolments for the next three years?

Answer

- (a) The following criteria for the opening and closing of small primary schools, are in place and are the same criteria in place under the previous government.
- There has been a consistently low average enrolment for at least two years. This is 10 students or fewer for remote community/isolated schools, 15 students or fewer for rural primary schools and 150 students or fewer for metropolitan primary schools.
 - There is no indication of growth in student numbers in the foreseeable future.
 - For rural schools, students are within daily travel of another school.
 - The maximum daily travel distance adopted is the standard supported by the Public Transport Authority – School Bus Services, which is 90 minutes of travel time, one way.
 - A nearby school has the capacity to enrol students from the closing school with minimal or no capital works.
 - The school does not cater for special groups of students, such as those enrolled in an Intensive English Centre, and there is no intention to change this in the future.
- (b) Please refer to Attachment 1.



ATTACHMENT 1

Top 20 smallest remote community schools¹				
School name	2017	2018	2019	2020
Jungdranung Remote Community School	6	5	5	6
Dawul Remote Community School	8	16	16	17
Djugerari Remote Community School	9	12	13	13
Ngalapita Remote Community School	11	8	8	8
Yulga Jinna Remote Community School	12	14	12	13
Pia Wadjarri Remote Community School	17	14	15	16
Mount Margaret Remote Community School	19	21	19	15
Wananami Remote Community School	32	24	23	22
Tjuntjuntjara Remote Community School	32	21	19	19
Yandeyarra Remote Community School	34	31	29	28
Muludja Remote Community School	36	32	32	32
Wangkatjunga Remote Community School	39	45	43	43
Burringurrah Remote Community School	50	46	44	44
Wiluna Remote Community School	75	79	76	71
Jigalong Remote Community School	77	74	71	68
Bayulu Remote Community School	101	113	108	102
Looma Remote Community School	118	100	98	98
Kalumburu Remote Community School	121	105	96	89
One Arm Point Remote Community School	127	129	129	131
La Grange Remote Community School	154	155	147	140

Top 20 smallest regional primary schools¹				
School name	2017	2018	2019	2020
Gascoyne Junction Remote Community School ²	10	9	12	13
Babakin Primary School	12	12	13	13
Woodanilling Primary School	12	14	13	13
Jerdacuttup Primary School	13	13	14	15
Nungarin Primary School	15	14	15	15
Ongerup Primary School	16	16	16	16
Cue Primary School	17	13	16	16
Useless Loop Primary School	17	20	20	22
Greenbushes Primary School	18	23	20	20
Cadoux Primary School	19	22	24	22
Pingrup Primary School	19	17	18	17
Borden Primary School	20	25	24	26
Menzies Community School	20	19	18	16
Yealering Primary School	20	22	20	20
Munglinup Primary School	21	21	18	17
Wandering Primary School	21	27	24	25
Eneabba Primary School	22	19	19	19
Cascade Primary School	22	23	23	25
Binnu Primary School	24	20	17	17
Moorine Rock Primary School	24	19	16	18
Scaddan Primary School	24	21	22	20

¹ 2017 enrolment as at Semester 2, 2017 census. 2018 to 2020 enrolment projections as at September 2017.

² Classified as a primary school.

ESTIMATES AND FINANCIAL OPERATIONS COMMITTEE

Department of Education

Hon Martin Aldridge MLC asked:

3. I refer to page 16 of the hearing transcript and I ask:
- (a) Who has been consulted to undertake an assessment of maintenance works required at Moora Residential College;
 - (b) What is the cost of the consultancy;
 - (c) Will you provide a copy of the report prepared as a result of the consultancy; and
 - (d) When was the report provided to government by the consultant?

Answer

3. (a) Armstrong Parkin Architects were engaged to assess fire compliance at the College. Further assessment to address other areas of compliance and maintenance is yet to be completed
- (b) The cost to date of the consultancy is \$13 710.
- (c) A copy of the fire compliance upgrade interim report is attached.
- (d) The interim report was provided to Department of Education on 9 October 2017.

Sam 2/1/17

October 9, 2017

Department of Finance - Building Management and Works
PO Box 79
Geraldton WA 6531

Attn: Ian Williams
Email: Ian.Williams@finance.wa.gov.au

MOORA RESIDENTIAL COLLEGE – FIRE COMPLIANCE UPGRADE REPORT

Dear Ian

As requested please find below and attached our report.

INTERIM REPORT

REPORT SCOPE

The scope of work for the report directed by you was to:

1. Identify the scope of construction and other works necessary to achieve a fire compliant facility.
2. Identify the likely costs associated with those works.

REFERENCES

The following references were used in preparation of this report.

BMW archive – As constructed drawings
Building services engineers initial site inspection reports.
Armstrong Parkin Architects site visit photographs.

SUB-CONSULTANTS

The following sub-consultants have been engaged to advise in preparation of this report.

Electrical	BEST – Michael Higgs
Building Surveyor	Schwanke – Annette Bell
Hydraulic	Hydraulics Design Australia – Joseph Tilli
Quantity Surveyor	Erik Postmus

APPROACH AND ASSUMPTIONS

Our approach to the preparation of this report was to:

1. Meet with all fire services related sub-consultants
2. Discuss and determine a practical approach to the facility upgrade with as little cost as possible.
3. Update and complete a measured drawing of the existing facility.

The previously prepared building services engineers and building surveyor reports identified numerous non-compliances with the existing construction, namely:

- Water fire service supply pressure is inadequate.
- Water fire service supply hydrants are inadequate.
- Detection and warning systems are not reliable or complete.
- Bounding construction to Sole Occupancy Units (SOU) is inadequate.
- Other non-compliant aspects of construction.

The outcome of the consultant meeting determined a guiding principle for completion of fire upgrade works. That principle is to create 500m² or less fire compartment areas with upgraded fire detection and warning systems. The Building Code of Australia requires a fire fighting water service with adequate pressure or reduction in the size of 'buildings' to less than 500m² in order to achieve compliance.

The approach to the upgrade is to detect, warn and evacuate occupants from the building regardless of firefighting capability. Even with a fire fighting capable service the occupants would be evacuated. The priority is to protect lives not buildings.

The consultant team took the view that the cost to upgrade the fire water service with fire tanks and pumps in order to meet a complaint fire service was unnecessary if the priority is to detect and evacuate occupants.

In determining the extent and method of upgrading the building construction to compliance we undertook a desktop investigation of as constructed drawings. A site visit and inspection of the roof spaces has not been undertaken.

PROPOSED WORKS

Please refer to the attached drawing SD02-C which illustrates and schedules the proposed works.

The extent of building works is as follows:

Demolition

- Removal of corridors that extend from the dormitory buildings to the staff quarters. This reduces the exit distances from the SOU to exit doors and achieves compliance.

Walls

- 60/60/60 fire rated bounding construction to each SOU
- 90/90/90 fire rated bounding construction to each fire compartment of less than 500m²

Doors and Windows

- Replacement of all doors to SOU to achieve a 60/60/60 fire rating.
- Replacement and installation of fire rated exit doors to achieve 90/90/90 fire rating.
- Removal of some doors and windows and infill brickwork where these openings occur on fire compartment walls.
- Removal of some doors and windows and replacement with fire rated doors and windows.
- Installation of 6 roof windows to rooms that do not have compliant light and ventilation.

Flooring

- Carpet and vinyl flooring replacement and any other lining material that is not able to be accurately identified in terms of fire event performance.

Ceilings

- Remove existing non-plasterboard ceilings (such as melamine panel grid type ceilings) and installation of new plasterboard ceilings.

Services

- Upgrade the existing fire detection and warning systems with additional and new infra-red and smoke detectors, alarms and sirens.
- Modify FIP as required.
- Initiate a monthly fire system testing and maintenance program (DoE and College responsibility)

LIKELY COSTS

The Quantity Surveyor has identified a construction cost of \$696,800 + GST.

We anticipate that an Estimated Total Commitment including professional fees, disbursements and some non-construction costs would be in the order of \$750,000 + GST.

Notable costs identified in the cost report are:

- Carpet and Vinyl \$181,900 + GST. If we are able to procure fire performance data on existing carpets and vinyls and that these products meet required standards then replacement is not necessary. Given that we do not have this information we have chosen to allow for full replacement.
- Contingencies \$116,200 + GST. The quantity surveyor has allocated a healthy allowance of 20% for both design and construction contingencies.

ATTACHEMENTS

Architectural drawings

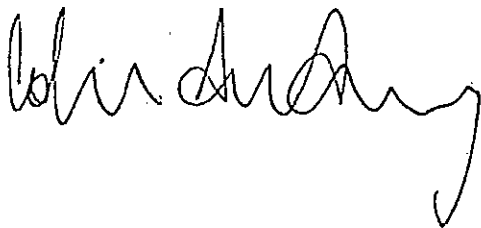
SD02 – C

SD03 – B

Quantity Surveyor

Opinion of Probable Cost dated 09 October 2017

END OF REPORT



Colin Armstrong

Director

**Moora Residential College
Fire Upgrade
Opinion of Probable Cost
Indicative Cost**

This opinion of probable cost of construction (OPC) is based on my experience and qualifications and represent my judgement as a consultant familiar with the construction industry but shall not be a guarantee that construction costs will not vary from this OPC. It is further noted that I have no control over the cost of labour, material or equipment, the means methods and procedures of the construction process or the competitive bidding process.

The OPC is Current at 9 October 2017

The OPC is based on

Armstrong Parkin Architects drawings SD02 & SD03 amendment C dated 6.10.17

No specialist cost advice has been received for

Electrical services
Mechanical services
Hydraulic services

The following are excluded

Latent site and building conditions
Removal of loose furniture and equipment
Professional fees
Escalation beyond October 2017

Erik Postmus AAIQS
Quantity Surveyor

655 Liberton Road Chidlow 6556

Telephone 08 9572 3200
Mobile 0419 865 741
Email qserik@gidqenet.com.au

**Moora Residential College
Fire Upgrade
Opinion of Probable Cost
Trade Summary**

Trade	Cost
Preliminaries	62,200
Demolition	34,900
Concretework	1,400
Brickwork	26,300
Carpentry	51,400
Joinery	37,700
Roofing	60,100
Ceilings & Linings	93,600
Resilient Finishes	181,900
Painting	16,100
Electrical Services	15,000
	580,600
Design Contingency	10% 58,100
Construction Contingency	10% 58,100
	696,800
GST	69,680
	766,480

Moora Residential College Fire Upgrade

	TRADES PR Preliminaries				62,173
1	Preliminaries	Item			62,173
	TRADES DE Demolition				34,870
	<u>Take Out and Remove</u>				
2	Single door and frame	No.	16	350.00	5,600
3	Double door and frame	No.	3	420.00	1,260
4	Highlight window	No.	1	690.00	690
5	Window	No.	12	690.00	8,280
	<u>Demolish and Remove</u>				
6	Linkways and buildings	m2	136	140.00	19,040
	TRADES CO Concretework				1,380
7	Footing to wall	m	2	690.00	1,380
	TRADES BK Brickwork				26,300
	<u>Face Brickwork</u>				
8	Infill brickwork	m2	66	350.00	23,100
9	230 thick wall	m2	8	400.00	3,200
	TRADES CA Carpentry				51,400
	<u>Wall framing</u>				
10	70 thick studwork in roof space	m2	34	160.00	5,440
11	70 thick studwork over wall	m2	89	140.00	12,460
12	Blocking top of brick leaves	m	69	150.00	10,350
	<u>Linings</u>				
13	8 thick CFC bird board	m	35	70.00	2,450
14	Wall lining	m2	40	90.00	3,600

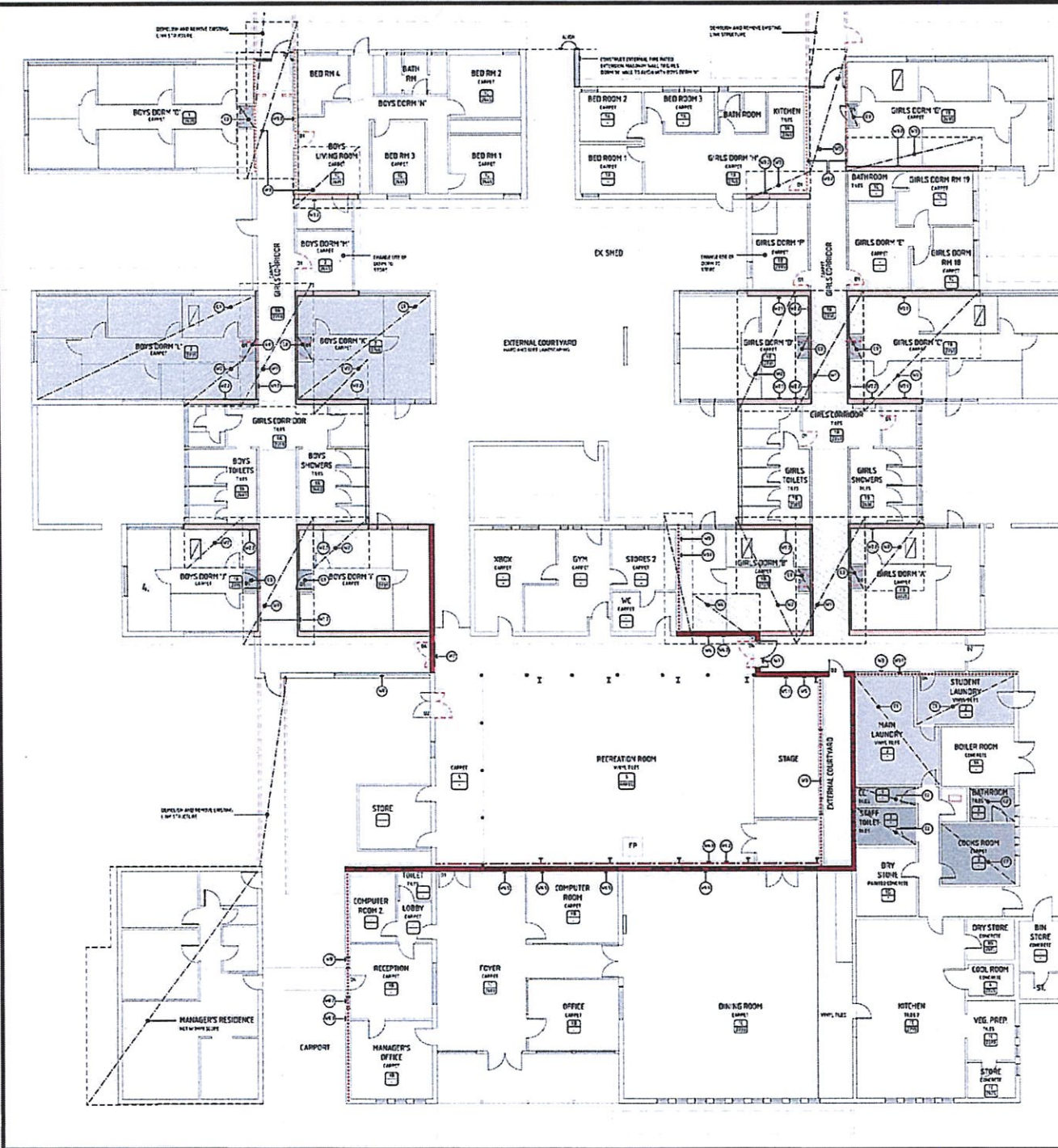
Moora Residential College Fire Upgrade

	<u>Flooring</u>				
15	Trafficable platform between roof trusses in roof space	m2	90	190.00	17,100
TRADES JO Joinery					37,700
	<u>Internal Doors</u>				
	<u>Door and steel frame</u>				
16	Single door including hardware	No.	13	1,100.00	14,300
	<u>Fire doors</u>				
17	Single door including hardware	No.	3	2,100.00	6,300
18	Double door including hardware	No.	3	5,700.00	17,100
TRADES RF Roofing					60,010
19	Take up 45 degree roofing etc and reinstate on completion	m2	74	130.00	9,620
20	Take up 15 degree roofing etc and reinstate on completion	m2	155	100.00	15,500
21	Take up roofing or large flashing etc and reinstate on completion	m2	61	90.00	5,490
	<u>Roof Lights</u>				
22	Velux operable roof window	No.	6	4,900.00	29,400
TRADES CL Ceilings & Linings					93,510
	<u>Plasterboard</u>				
23	two layers 16 Fyrecheck lining fixed to studwork in ceiling space	m2	158	130.00	20,540
24	two layers 13 Fyrecheck lining fixed to studwork	m2	92	110.00	10,120
25	Fire sealing between top of wall and roof sheeting	m	331	50.00	16,550
26	Fire sealing between top of existing wall and roof sheeting	m	102	50.00	5,100

Erik Postmus

Moora Residential College Fire Upgrade

27	Remove ceiling and re-instate on completion	m2	5	210.00	1,050	
28	Replace ceiling with fire rated ceiling including framing	m2	8	460.00	3,680	
29	Replace ceiling with flush plasterboard ceiling	m2	59	210.00	12,390	
30	Lining to roof window	m2	60	300.00	18,000	
	<u>Metal Strip Ceiling</u>					
31	Remove ceiling and re-instate on completion	m2	19	320.00	6,080	
TRADES FL Resilient Finishes						181,860
32	Replace carpet or vinyl	m2	1299	140.00	181,860	
TRADES PT Painting						16,075
	<u>External Painting to:</u>					
33	CFC bird board	m	35	30.00	1,050	
34	Wall lining	m2	40	25.00	1,000	
	<u>Internal Painting to:</u>					
35	Walls	m2	92	25.00	2,300	
36	Ceilings	m2	128	20.00	2,560	
37	Single door and frame	No.	16	165.00	2,640	
38	Double door and frame	No.	3	275.00	825	
39	Sundry making good etc	Item			3,000	
40	Lining to roof window	m2	60	45.00	2,700	
TRADES LP Electrical Services						15,000
41	Disconnections, relocations, illuminated signs etc	Item			15,000	
TOTAL					580,278	580,278



EXISTING CEILING TYPES

- 1. TYPE OF EX. BS
- 2. PAINTED PLASTERBOARD
- 3. PLASTERBOARD WITH 60x60mm JOINTS
- 4. PLASTERBOARD WITH 60x60mm JOINTS AND 100x100mm REINFORCING
- 5. PLASTERBOARD WITH 60x60mm JOINTS AND 100x100mm REINFORCING AND 100x100mm REINFORCING
- 6. PLASTERBOARD WITH 60x60mm JOINTS AND 100x100mm REINFORCING AND 100x100mm REINFORCING
- 7. PLASTERBOARD WITH 60x60mm JOINTS AND 100x100mm REINFORCING AND 100x100mm REINFORCING
- 8. PLASTERBOARD WITH 60x60mm JOINTS AND 100x100mm REINFORCING AND 100x100mm REINFORCING
- 9. PLASTERBOARD WITH 60x60mm JOINTS AND 100x100mm REINFORCING AND 100x100mm REINFORCING
- 10. PLASTERBOARD WITH 60x60mm JOINTS AND 100x100mm REINFORCING AND 100x100mm REINFORCING

CEILING

- 1. REMOVE AND RE-INSTALL THE EX. BS PLASTERBOARD TO THE EX. BS PLASTERBOARD WITH 60x60mm JOINTS AND 100x100mm REINFORCING
- 2. REMOVE AND RE-INSTALL THE EX. BS PLASTERBOARD TO THE EX. BS PLASTERBOARD WITH 60x60mm JOINTS AND 100x100mm REINFORCING
- 3. REMOVE AND RE-INSTALL THE EX. BS PLASTERBOARD TO THE EX. BS PLASTERBOARD WITH 60x60mm JOINTS AND 100x100mm REINFORCING

FLOOR COVERINGS

- 1. CARPET
- 2. CARPET
- 3. CARPET
- 4. CARPET
- 5. CARPET
- 6. CARPET
- 7. CARPET
- 8. CARPET
- 9. CARPET
- 10. CARPET

DOORS

- 1. REMOVE AND RE-INSTALL THE EX. BS PLASTERBOARD TO THE EX. BS PLASTERBOARD WITH 60x60mm JOINTS AND 100x100mm REINFORCING
- 2. REMOVE AND RE-INSTALL THE EX. BS PLASTERBOARD TO THE EX. BS PLASTERBOARD WITH 60x60mm JOINTS AND 100x100mm REINFORCING
- 3. REMOVE AND RE-INSTALL THE EX. BS PLASTERBOARD TO THE EX. BS PLASTERBOARD WITH 60x60mm JOINTS AND 100x100mm REINFORCING
- 4. REMOVE AND RE-INSTALL THE EX. BS PLASTERBOARD TO THE EX. BS PLASTERBOARD WITH 60x60mm JOINTS AND 100x100mm REINFORCING
- 5. REMOVE AND RE-INSTALL THE EX. BS PLASTERBOARD TO THE EX. BS PLASTERBOARD WITH 60x60mm JOINTS AND 100x100mm REINFORCING

WALLS

- 1. REMOVE AND RE-INSTALL THE EX. BS PLASTERBOARD TO THE EX. BS PLASTERBOARD WITH 60x60mm JOINTS AND 100x100mm REINFORCING
- 2. REMOVE AND RE-INSTALL THE EX. BS PLASTERBOARD TO THE EX. BS PLASTERBOARD WITH 60x60mm JOINTS AND 100x100mm REINFORCING
- 3. REMOVE AND RE-INSTALL THE EX. BS PLASTERBOARD TO THE EX. BS PLASTERBOARD WITH 60x60mm JOINTS AND 100x100mm REINFORCING
- 4. REMOVE AND RE-INSTALL THE EX. BS PLASTERBOARD TO THE EX. BS PLASTERBOARD WITH 60x60mm JOINTS AND 100x100mm REINFORCING
- 5. REMOVE AND RE-INSTALL THE EX. BS PLASTERBOARD TO THE EX. BS PLASTERBOARD WITH 60x60mm JOINTS AND 100x100mm REINFORCING

1	REMOVE AND RE-INSTALL THE EX. BS PLASTERBOARD TO THE EX. BS PLASTERBOARD WITH 60x60mm JOINTS AND 100x100mm REINFORCING	10/10/10	EA
2	REMOVE AND RE-INSTALL THE EX. BS PLASTERBOARD TO THE EX. BS PLASTERBOARD WITH 60x60mm JOINTS AND 100x100mm REINFORCING	10/10/10	EA
3	REMOVE AND RE-INSTALL THE EX. BS PLASTERBOARD TO THE EX. BS PLASTERBOARD WITH 60x60mm JOINTS AND 100x100mm REINFORCING	10/10/10	EA
4	REMOVE AND RE-INSTALL THE EX. BS PLASTERBOARD TO THE EX. BS PLASTERBOARD WITH 60x60mm JOINTS AND 100x100mm REINFORCING	10/10/10	EA
5	REMOVE AND RE-INSTALL THE EX. BS PLASTERBOARD TO THE EX. BS PLASTERBOARD WITH 60x60mm JOINTS AND 100x100mm REINFORCING	10/10/10	EA

ARMSTRONG PARKIN ARCHITECTS

10000 South Beach Road, Suite 100, Perth, Western Australia 6005

Phone: 08 9447 1000
Fax: 08 9447 1001
Email: info@armstrongparkin.com.au

Government of Western Australia
Department of Finance
Building Management and Works

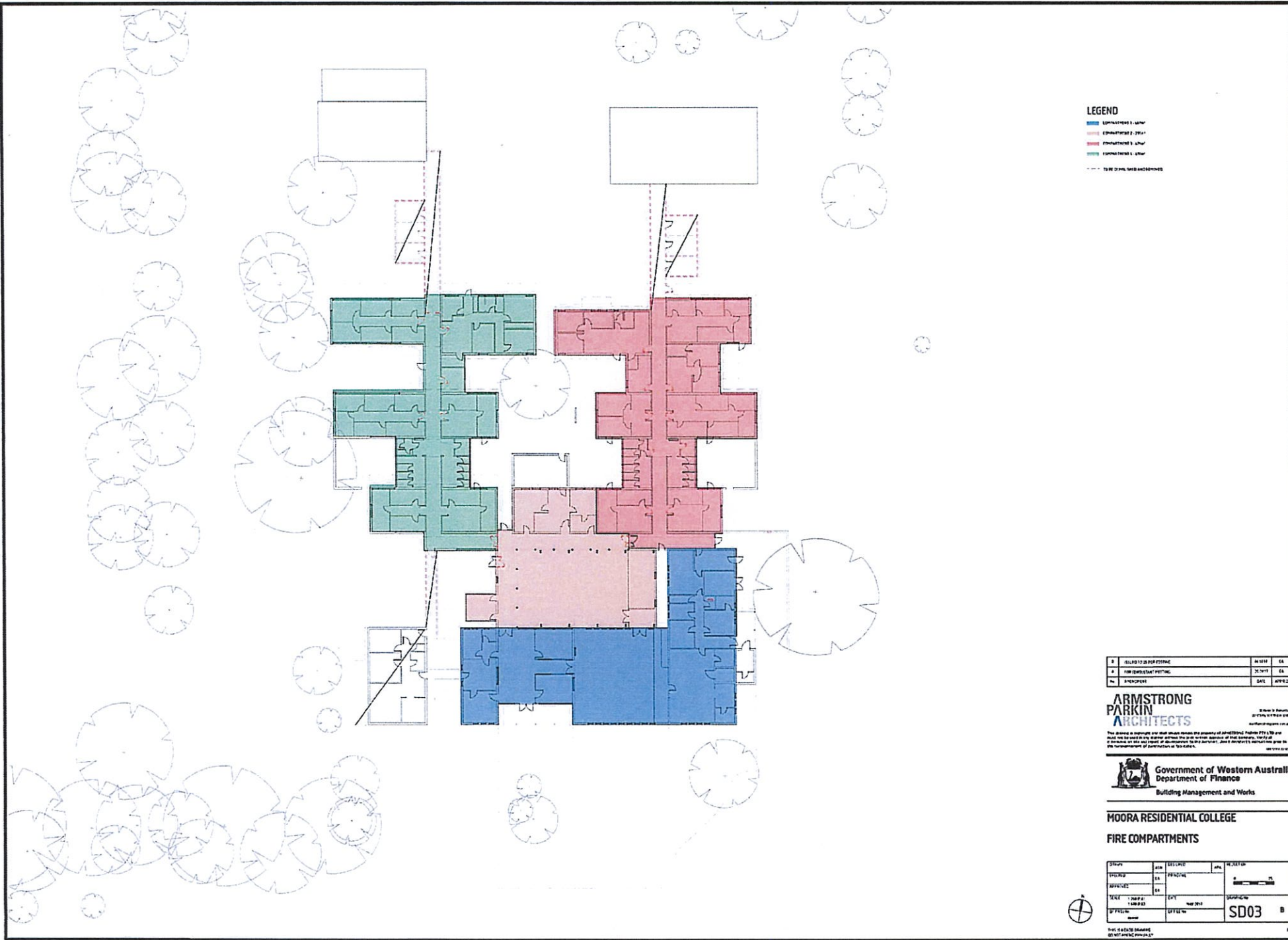
MOORA RESIDENTIAL COLLEGE

FLOOR PLAN PROPOSED WORKS

DATE	10/10/10	BY	ARMSTRONG PARKIN ARCHITECTS
SCALE	1:100	DATE	10/10/10
PROJECT	MOORA RESIDENTIAL COLLEGE	OFFICE	SD02

1:100

10/10/10



LEGEND

- FIRE COMPARTMENT 1 (Blue)
- FIRE COMPARTMENT 2 (Light Blue)
- FIRE COMPARTMENT 3 (Red)
- FIRE COMPARTMENT 4 (Green)
- FIRE COMPARTMENT 5 (Yellow)

1	ISSUED TO CLIENT	DATE	BY
2	FOR REVIEW	DATE	BY
3	APPROVED	DATE	BY

ARMSTRONG PARKIN ARCHITECTS

100 North Street
Perth WA 6000
Australia
08 9447 3333
armstrongparkin.com.au

Government of Western Australia
Department of Finance
Building Management and Works

MOORA RESIDENTIAL COLLEGE
FIRE COMPARTMENTS

Drawn	REV	DATE	BY	REVISION
Checked	EA	20/01/10	EA	1
Scale	1:100	DATE	BY	REVISION
Project	MOORA	DATE	BY	REVISION
				SD03



ESTIMATES AND FINANCIAL OPERATIONS COMMITTEE

Department of Education

Hon Martin Aldridge MLC asked:

4. I refer to your answer to question on notice 2(c) prior to estimates hearings and I ask:
- (a) Is it possible to provide the operating costs associated with the boarding component of agricultural colleges in isolation to other activities?

Answer

(a)

College Name	Total
WA College of Agriculture – Cunderdin	\$1 472 885
WA College of Agriculture – Denmark	\$1 374 361
WA College of Agriculture – Harvey	\$1 446 315
WA College of Agriculture – Morawa	\$1 269 973
WA College of Agriculture – Narrogin	\$1 512 295
Total	\$7 075 829

Note: The total includes residential operating allocation, salaries and utilities.



ESTIMATES AND FINANCIAL OPERATIONS COMMITTEE

Department of Education

Hon Martin Aldridge MLC asked:

5. The answer to question on notice number 2(d) prior to estimates hearings and I note the differential between boarding fees at residential colleges and agricultural colleges and I ask:
- (a) Does the government intend to review the fees charged over time to average out the boarding costs between facilities; and
 - (b) I refer to the evidence by Ms O'Neill on page 14 of the transcript which suggests that residential colleges have a greater economy of scale as they number 9 in comparison to agricultural colleges at 5, however I ask for clarification in this respect as the boarding costs are considerably higher for those students attending residential colleges?

Answer

- (a) No. It is not the intention of government to average the boarding costs across the facilities. However, the government will consider ways to move towards increased parity of boarding costs between facilities over time.
- (b) The Honourable Member is correct. Economies of scale are achieved at the agricultural colleges due to their higher enrolments and fewer numbers of colleges. A letter of correction has been sent to the Committee.



ESTIMATES AND FINANCIAL OPERATIONS COMMITTEE

Department of Education

Hon Martin Aldridge MLC asked:

6. I refer to the Boarding Away from Home Allowance (BAHA) and I ask:
- (a) has a review been undertaken of the BAHA;
 - (b) if yes to (a) please advise when the review was completed, who conducted the review and what the recommendations of the review were;
 - (c) if yes to (a) please provide a copy of the review;
 - (d) with respect to calendar year 2015 and 2016 please advise how many BAHA grants were made, the location of the student, the year of the student and the school attended by the student?

Answer

- (a) and (b) Yes. In October 2016 the Department of Education undertook a high-level internal assessment of the Boarding Away from Home Allowance (BAHA) as part of a routine review of allowances.
- (c) No formal report was prepared on the assessment.
- (d) Refer to Attachment 1 and Attachment 2.



ATTACHMENT 1

2015 BOARDING AWAY FROM HOME ALLOWANCE BY SCHOOLING YEAR LEVEL

Boarding Provider	School Attended	Schooling Year Level												Year Level not Available ²	TOTAL	
		1	2	3	4	5	6	7	8	9	10	11	12			
Albany Residential College	Albany Secondary Education Support Centre													1		1
Albany Residential College	Albany Senior High School							5	12	12	8	13	9			59
Albany Residential College	St Joseph's College – Albany								2	1	1	1	1			6
Aquinas College	Aquinas College							3	8	11	8	13	8			51
Broome Residential College	Broome Senior High School										1					1
Bunbury Cathedral Grammar School	Bunbury Cathedral Grammar School							3	4	3	2	3	6			21
Carmel Adventist College	Carmel Adventist College							1				2				3
Catholic Agricultural College Bindoon	Catholic Agricultural College Bindoon									1	2	1	2		14	20
Christ Church Grammar School	Christ Church Grammar School							4	1	2	1	2				10
City Beach Residential College	Churchlands Senior High School											2				2
City Beach Residential College	John Curtin College Of The Arts							2	1	12	4	9				28
City Beach Residential College	Perth Modern School								3	1	5	7	3.75			19.75
City Beach Residential College	Shenton College									1	1	1				3
Edith Cowan University Residential Village	Manea Senior College												1			1
Esperance Residential College	Esperance Senior High School							8	11	5	4	13	18			59
Geraldton Residential College	Geraldton Grammar School							2	2	7	2	4	3			20
Geraldton Residential College	Geraldton Senior College										2	10	4			16
Geraldton Residential College	John Willcock College								1	1						2
Geraldton Residential College	Nagle Catholic College											1				1
Great Southern Grammar	Great Southern Grammar							6	11	11	8.5	12.5	7			56
Guildford Grammar School	Guildford Grammar School							5	11	7	7	5	5			40

Boarding Provider	School Attended	Schooling Year Level												Year Level not Available ²	TOTAL
		1	2	3	4	5	6	7	8	9	10	11	12		
Hale School	Hale School							4	7	11	7	16	10		55
Iona Presentation College	Iona Presentation College							2	1		2	4	3		12
Mazenod College	Mazenod College							4	12	7	8	10	11		52
Merredin Residential College	Merredin College							4	12	9	5	10	5		45
Methodist Ladies College	Methodist Ladies College							2	2		2	1	1		8
Nagle Catholic College	Nagle Catholic College							1		3	6	8	10		28
Narrogin Residential College	Narrogin Senior High School							7	15	16	13	24	31		106
Northam Residential College	Northam Senior High School								1	4	3	7	5		20
Penrhos College	Penrhos College							12	2	2.5	6.5	8	3		34
Perth College	Perth College							1	7	3	5	6	6		28
Presbyterian Ladies College	Presbyterian Ladies College								2	2	2	6	5		17
Private Boarding	Canning Vale College										1				1
Private Boarding	Darling Range Sports College									1					1
Private Boarding	Ellenbrook Secondary College							1		1	1				3
Private Boarding	Governor Stirling Senior High School												1		1
Private Boarding	Kent Street Senior High School											2			2
Private Boarding	Nagle Catholic College												1		1
Private Boarding	Northam Senior High School												1		1
Private Boarding	Perth Modern School												0.25		0.25
Private Boarding	Southern Hills Christian College											1			1
Private Boarding	Willetton Senior High School										1				1
Rotary Residential College	Como Secondary College							1	3	2	1	2	3		12
Rotary Residential College	Kent Street Senior High School										3	5	6		14
Rotary Residential College	Lynwood Senior High School											2			2
Rotary Residential College	Shenton College										1	1			2
Santa Maria College	Santa Maria College							3	7	8	11	19	15		63

Boarding Provider	School Attended	Schooling Year Level												Year Level not Available ²	TOTAL
		1	2	3	4	5	6	7	8	9	10	11	12		
Scotch College	Scotch College							4	2	4	4	5	4		23
Second Home	Albany Primary School					1									1
Second Home	Albany Senior High School									1	1				2
Second Home	Bridgetown High School							1							1
Second Home	Bunbury Cathedral Grammar School										1				1
Second Home	Bunbury Catholic College									1		1	1		3
Second Home	Cecil Andrews College											1			1
Second Home	Collier Primary School					1									1
Second Home	Esperance Anglican Community School												1		1
Second Home	Esperance Senior High School												1		1
Second Home	Great Southern Grammar						1	1	1	1	2.5	3.5			10
Second Home	Irene McCormack Catholic College							1	1						2
Second Home	Nagle Catholic College												1		1
Second Home	Narrogin Senior High School								1		1		1		3
Second Home	Penrhos College										0.5	0.5			1
Second Home	Presbyterian Ladies College							1					1		2
Second Home	Quinns Baptist College				1					1	1		1		4
Second Home	Scotch College										1				1
Second Home	St Brigid's College												1		1
Second Home	St Joseph's Catholic Primary School								1						1
Second Home	St Joseph's College – Albany											1			1
Second Home	St Stephen's School												1		1
Second Home	Swan Christian College												1		1
Second Home	Great Southern Grammar												1		1

Boarding Provider	School Attended	Schooling Year Level												Year Level not Available ²	TOTAL
		1	2	3	4	5	6	7	8	9	10	11	12		
St Brigid's College	St Brigid's College							8	7	8	14	8	7		52
St Hilda's Anglican School For Girls	St Hilda's Anglican School For Girls							2	6	5	4	2	2		21
St James Residential College Moora	Central Midlands Senior High School							7	3	4	3	10	4		31
St Mary's Anglican Girls' School	St Mary's Anglican Girls' School							9	7	7	11	15	7		56
WA College Of Agriculture – Cunderdin	WA College Of Agriculture – Cunderdin											42	34	47	123
WA College Of Agriculture – Denmark	WA College Of Agriculture – Denmark										4	9	8	65	86
WA College Of Agriculture – Harvey	WA College Of Agriculture – Harvey											15	2	94	111
WA College Of Agriculture – Morawa	WA College Of Agriculture – Morawa										10	16.5	11	20	57.5
WA College Of Agriculture – Narrogin	WA College Of Agriculture – Narrogin										5	23.5	27	57	112.5
Wesley College	Wesley College							2	7	4	6	5	10		34
Various Metropolitan Short-Term Boarding Providers ¹	Information Not Available					2	1		1	3					7
Total		0	0	0	1	3	3	117	175	184	204	390	312	297	1686

Note:

1. Information on the student's school is not available for BAHA – Respite payments.
2. Information on student year level is not available for Boarding Away from Home Allowance (BAHA) Agricultural Special Subsidy payments
3. Pro-rata boarding (0.25 per term), applies where the student moves between schools and boarding providers during the school year.
4. Students that board for part of the year and leave school are reported as one application for the purposes of this Table.

ATTACHMENT 2

2016 BOARDING AWAY FROM HOME ALLOWANCE BY SCHOOLING YEAR LEVEL

Boarding Provider	School Attended	Schooling Year Level												Year Level not Available ²	TOTAL
		1	2	3	4	5	6	7	8	9	10	11	12		
Albany Residential College	Albany Senior High School							10	3	10	8.75	9	8		48.75
Albany Residential College	St Joseph's College - Albany									1	1	1	1		4
Aquinas College	Aquinas College							12	12	16	18.5	12	21		91.5
Broome Residential College	Broome Senior High School							1				1			2
Bunbury Cathedral Grammar School	Bunbury Cathedral Grammar School							2	2	3	1	3	2		13
Carmel Adventist College	Carmel Adventist College									1	1		1		3
Catholic Agricultural College Bindoon	Catholic Agricultural College Bindoon								1		2	6	2	17	28
Christ Church Grammar School	Christ Church Grammar School							1	2	2	4	2	4		15
City Beach Residential College	Applecross Senior High School											1			1
City Beach Residential College	Churchlands Senior High School												2		2
City Beach Residential College	John Curtin College Of The Arts							4	2	1	10	5	4		26
City Beach Residential College	Perth Modern School							2		4	1	5	6		18
City Beach Residential College	Shenton College										1	1	1		3
Esperance Anglican Community School	Esperance Anglican Community School							0.75	2.75						3.5
Esperance Residential College	Esperance Senior High School							15	8.25	14	6.25	10	11		64.5
Geraldton Residential College	Geraldton Grammar School							4	3	2	5	4	3		21
Geraldton Residential College	Geraldton Senior College										2	5	7		14
Geraldton Residential College	John Willcock College								2	1	1				4
Geraldton Residential College	Nagle Catholic College							2	3	2		2	6		15
Great Southern Grammar	Great Southern Grammar							14	11	13	11	9	13		71
Guildford Grammar School	Guildford Grammar School							3	7	10	7	7	7		41

Boarding Provider	School Attended	Schooling Year Level												TOTAL	
		1	2	3	4	5	6	7	8	9	10	11	12		Year Level not Available ²
Hale School	Hale School							7	8	5	13.5	8	16		57.5
Iona Presentation College	Iona Presentation College							1		1	2	5	5		14
Mazenod College	Mazenod College							9	7	15	10.25	18	22		81.25
Merredin Residential College	Merredin College							4	3	13	10	14	9		53
Methodist Ladies College	Methodist Ladies College							2	4		1	4	1		12
Nagle Catholic College*	Nagle Catholic College								1			1	3		5
Narrogin Residential College	Narrogin Senior High School							9	15	14	17	20.5	21		96.5
Northam Residential College	Northam Senior High School							1	1	1	4	5	5		17
Penrhos College	Penrhos College							4	12	2	3	10	8		39
Perth College	Perth College							3	1	4	5	12	12		37
Presbyterian Ladies College	Presbyterian Ladies College							3	3	4	4	7	7		28
Private Boarding	Albany Senior High School												1		1
Private Boarding	Armadale Senior High School							1	2	1					4
Private Boarding	Bunbury Cathedral Grammar School							1							1
Private Boarding	Canning Vale College											1			1
Private Boarding	Carmel Adventist College												1		1
Private Boarding	Central Midlands Senior High School							1	1	1	1				4
Private Boarding	Como Secondary College									1					1
Private Boarding	Ellenbrook Secondary College								1			1			2
Private Boarding	Governor Stirling Senior High School								1	1					2
Private Boarding	Joseph Banks Secondary College								2						2
Private Boarding	Kalamunda Senior High School										1				1
Private Boarding	Kent Street Senior High School											1	1		2
Private Boarding	La Salle College									1					1
Private Boarding	Lynwood Senior High School												2		2

Boarding Provider	School Attended	Schooling Year Level												Year Level not Available ²	TOTAL	
		1	2	3	4	5	6	7	8	9	10	11	12			
Private Boarding	Mackillop Catholic College - Busselton										0.5	1				1.5
Private Boarding	Nagle Catholic College										3	2	2			7
Private Boarding	Narrogin Senior High School											0.5				0.5
Private Boarding	North Lake Senior Campus											1				1
Private Boarding	Northam Senior High School												1			1
Private Boarding	Serpentine Jarrahdale Grammar School							1								1
Private Boarding	Southern Hills Christian College												1			1
Private Boarding	St Hilda's Anglican School for Girls								1							1
Private Boarding	Willetton Senior High School											1				1
Rotary Residential College	Applecross Senior High School												1			1
Rotary Residential College	Como Secondary College							1		2	1	4	3			11
Rotary Residential College	Darling Range Sports College												1			1
Rotary Residential College	Kent Street Senior High School							1	2	3	2	7	7			22
Rotary Residential College	Shenton College												1			1
Santa Maria College	Santa Maria College							9	7	7	14	11	21			69
Scotch College	Scotch College							2	3	9	11	11	8			44
Second Home	Albany Secondary Education Support Centre								1							1
Second Home	Albany Senior High School							1			1	1				3
Second Home	Bridgetown High School								1							1
Second Home	Bunbury Cathedral Grammar School											1				1
Second Home	Carine Primary School					1										1
Second Home	Carine Senior High School							1								1
Second Home	Cecil Andrews College												1			1

Boarding Provider	School Attended	Schooling Year Level												Year Level not Available ²	TOTAL		
		1	2	3	4	5	6	7	8	9	10	11	12				
Second Home	Collier Primary						1										1
Second Home	Como Secondary College										1		1				2
Second Home	Deanmore Primary School	1			1												2
Second Home	Geographe Education Support Centre												1				1
Second Home	Georgiana Molloy Anglican School							1		1							2
Second Home	Geraldton Grammar School	1	1			1	1	1	1								6
Second Home	Great Southern Grammar				1			1	2			1	1	1			7
Second Home	Kent Street Senior High School													1			1
Second Home	Mazenod College										0.25						0.25
Second Home	Newman College												1				1
Second Home	Penrhos College											1	1				2
Second Home	Presbyterian Ladies College								1					1			2
Second Home	Scotch College												1				1
Second Home	St Brigid's College								1	1			1	1			4
St Brigid's College	St Brigid's College							5	9	7	9	18	10				58
St Hilda's Anglican School For Girls	St Hilda's Anglican School For Girls							6	7	4	6	10	3				36
St James Residential College Moora	Central Midlands Senior High School							7	8	3	3	4	8				33
St Mary's Anglican Girls' School	St Mary's Anglican Girls' School							3.25	13	7	10	15	16				64.25
WA College Of Agriculture – Cunderdin	WA College Of Agriculture – Cunderdin											49	41		37		127
WA College Of Agriculture – Denmark	WA College Of Agriculture – Denmark										1						1
WA College Of Agriculture – Denmark	WA College Of Agriculture – Denmark									1	2	12	11		54		80
WA College Of Agriculture –	WA College Of Agriculture –										2	6	13		94		115

Boarding Provider	School Attended	Schooling Year Level														TOTAL	
		1	2	3	4	5	6	7	8	9	10	11	12	Year Level not Available ²			
Harvey	Harvey																
WA College Of Agriculture – Morawa	Morawa District High School											1					1
WA College Of Agriculture – Morawa	WA College Of Agriculture – Morawa											2	14	13		26	55
WA College Of Agriculture – Narrogin	WA College Of Agriculture – Narrogin											9	25	20		44	98
Wesley College	Wesley College							3	6	6	7	5	6				33
Various Metropolitan Short-Term Boarding Providers ¹	Information Not Available						2	1	1	4	2						10
Total		2	1	0	2	2	4	161	184	201	242	393	407		272		1871

* Nagle Catholic College ceased its boarding facility at the end of 2015. The payments made in 2016 are late applications relating to the 2015 school year.

Note:

1. Information on the student's school is not available for BAHA – Respite payments.
2. Information on student year level is not available for Boarding Away from Home Allowance (BAHA) Agricultural Special Subsidy payments
3. Pro-rata boarding (0.25 per term), applies where the student moves between schools and boarding providers during the school year.
4. Students that board for part of the year and leave school are reported as one application for the purposes of this Table.

ESTIMATES AND FINANCIAL OPERATIONS COMMITTEE

Department of Education

Hon Martin Aldridge MLC asked:

7. Following machinery of government reforms within the department, please detail the current reporting arrangements and oversight of the State's agricultural and residential colleges?

Answer

Currently as part of the interim structure, the five agricultural colleges, as independent public schools, have a direct reporting relationship to the Director General through their Delivery and Performance Agreement. Central support is provided to the agricultural colleges through the Manager Agricultural Education and Regional Development.

The nine residential colleges report to the Manager, Residential Colleges.

It should be noted that these reporting arrangements are not solely related to machinery-of-government changes.

